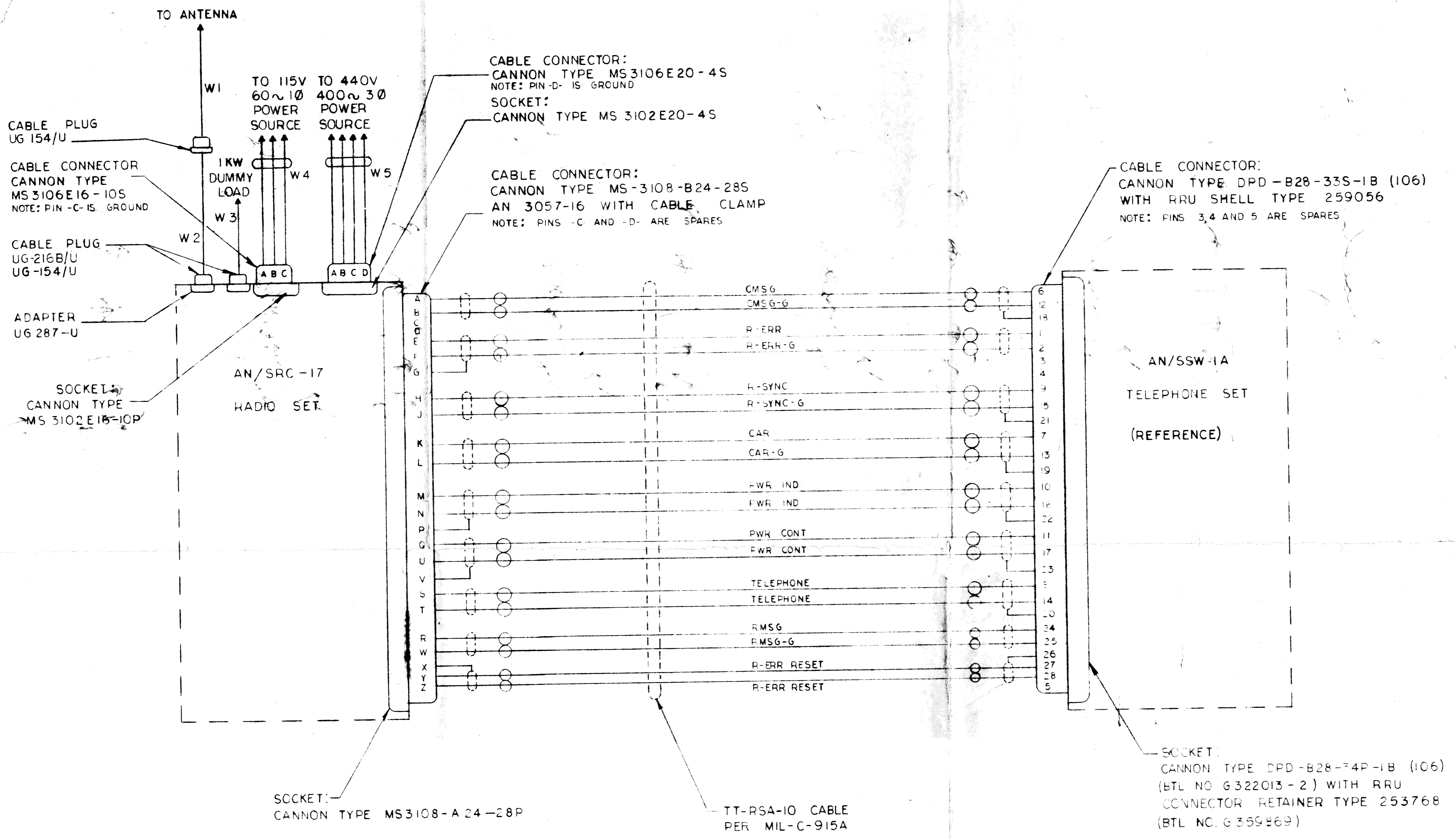


REVISIONS			
REV	DESCRIPTION	DATE	APPR



- CAR = CARRIER CONTROL
- CAR-G = CARRIER CONTROL GROUND
- CMSG = CONTROL MESSAGE
- CMSG-G = CONTROL MESSAGE GROUND
- R-ERR = RADIO ERROR
- R-ERR-G = RADIO ERROR GROUND
- R-SYNC = RADIO SYNC
- R-SYNC-G = RADIO SYNC GROUND
- PWR-IND = RADIO AC POWER INDICATOR
- PWR-CONT = RADIO AC POWER CONTROL
- R-MSG = RADIO RECEIVED MESSAGE
- R-MSG-G = RADIO RECEIVED MESSAGE GROUND
- R-ERR RESET = RADIO ERROR RESET

SYMBOL	NUMBER	ACTIVE	NAVY
COND	COND	COND	TYPE NO.
W1	COAX	1	RG-269/U
W2	COAX	1	RG-17/U
W3	COAX	1	RG-17A/U
W4	5	2	16/3 TYPE S
W5	4	3	16/4 TYPE S

GENERAL NOTES:
 1- ALL CABLES TO BE FURNISHED BY THE NAVY WITH THE EXCEPTION OF CABLES W1, W2 AND W3, WHICH WILL BE SUPPLIED WITH AN/SRC-17 RADIO SET

*End 2 to BuShips Mr. Ser 68922-1
 of 9 Jan 63
 Return H.L.H.*

PRELIMINARY COPY

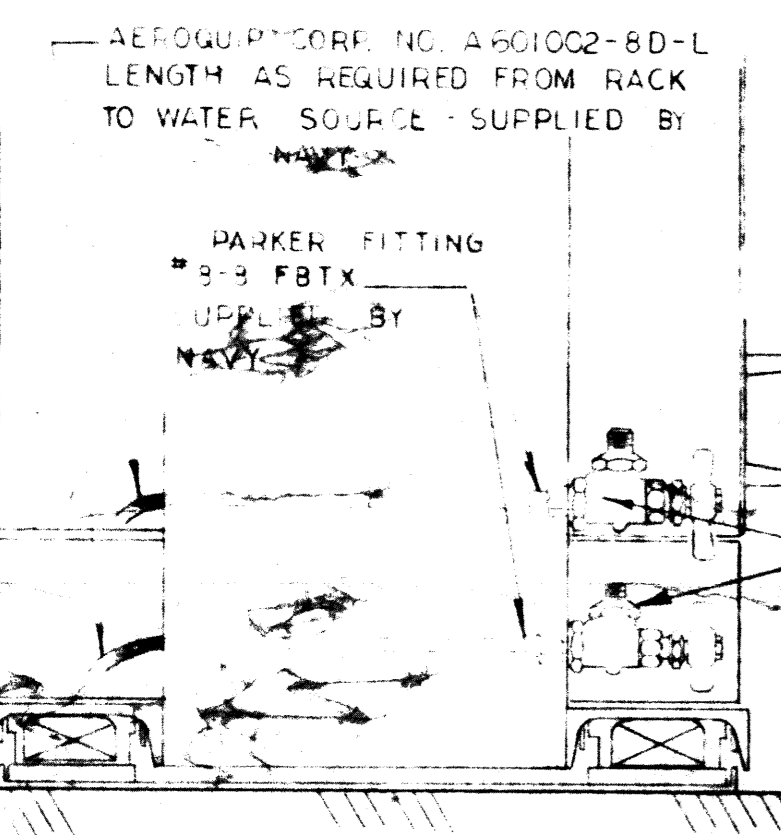
REFERENCES		
NO	TITLE	DRAWING NO.
1	AN/SRC-17 RADIO SET OUTLINE	F - 201-001-003
2	AN/SRC-17 RADIO SET SYSTEM DIAGRAM	D - 201-001-005
3	PRIMARY POWER DISTRIBUTION	D - 201-001-006
4	RUNNING SHEET FOR INTERCONN. CABLES	D - 201-001-007

NAVY DEPARTMENT		WASHINGTON D.C.	
D201001-004		BUREAU OF SHIPS	
EXAMINED		INTERCONNECTING - CABLING	
OFFICIAL SIGNATURE		DIAGRAM	
OFFICER IN CHARGE		AN/SRC-17 RADIO SET	
ENGINEER		CONTRACT NO bsr 87289	
REVIEWED	DATE	APPROVED	DATE
TRACED	DATE	FOR CHIEF OF BUREAU	ELECTRONICS DRAWING NO.
DRAWN	DATE	SCALE	SHEET 1 OF 1

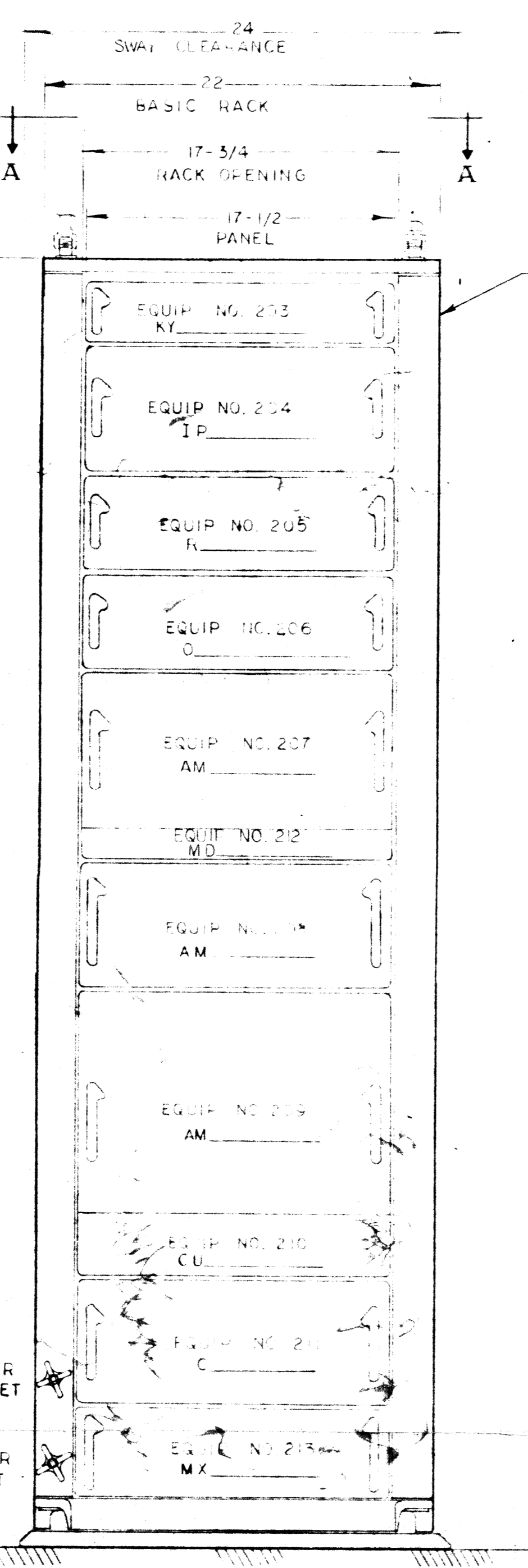
- EQUIP NO. 201 - AN/SRC-17 RADIO SET
- EQUIP NO. 202 - RACK
- EQUIP NO. 203 - KEYS - FREQ SHIFT
- EQUIP NO. 204 - MONITOR, DIGITAL DATA
- EQUIP NO. 205 - RECEIVER, RADIO
- EQUIP NO. 206 - SYNTHESIZER, ELECTRICAL FREQ
- EQUIP NO. 207 - AMPL-FREQ MULT IO WATT
- EQUIP NO. 212 - MODULATOR RADIO TRANS
- EQUIP NO. 208 - AMPLIFIER, RADIO FREQ 100W
- EQUIP NO. 209 - AMPLIFIER RADIO FREQ 1KW
- EQUIP NO. 210 - COMPLEXER
- EQUIP NO. 211 - CONTROL POWER SUPPLY
- EQUIP NO. 213 - COOLER LIQUID ELECTRON TUBE

NOTE
 ALL OF THE INDIVIDUAL EQUIPMENTS IN THIS SYSTEM ARE SELF CONTAINED MODULES (HAVE THEIR OWN POWER SUPPLY AND COOLING SYSTEM) AND CAN BE USED FOR OTHER SUITABLE APPLICATIONS. THE ONE EXCEPTION TO THE ABOVE IS THE MONITOR UNIT, EQUIP NO. 204 WHICH IS PECULIAR TO THIS SYSTEM BUT CONTAINS AN OSCILLOSCOPE AN/USM-117 MODIFIED WHICH CAN BE USED ELSEWHERE

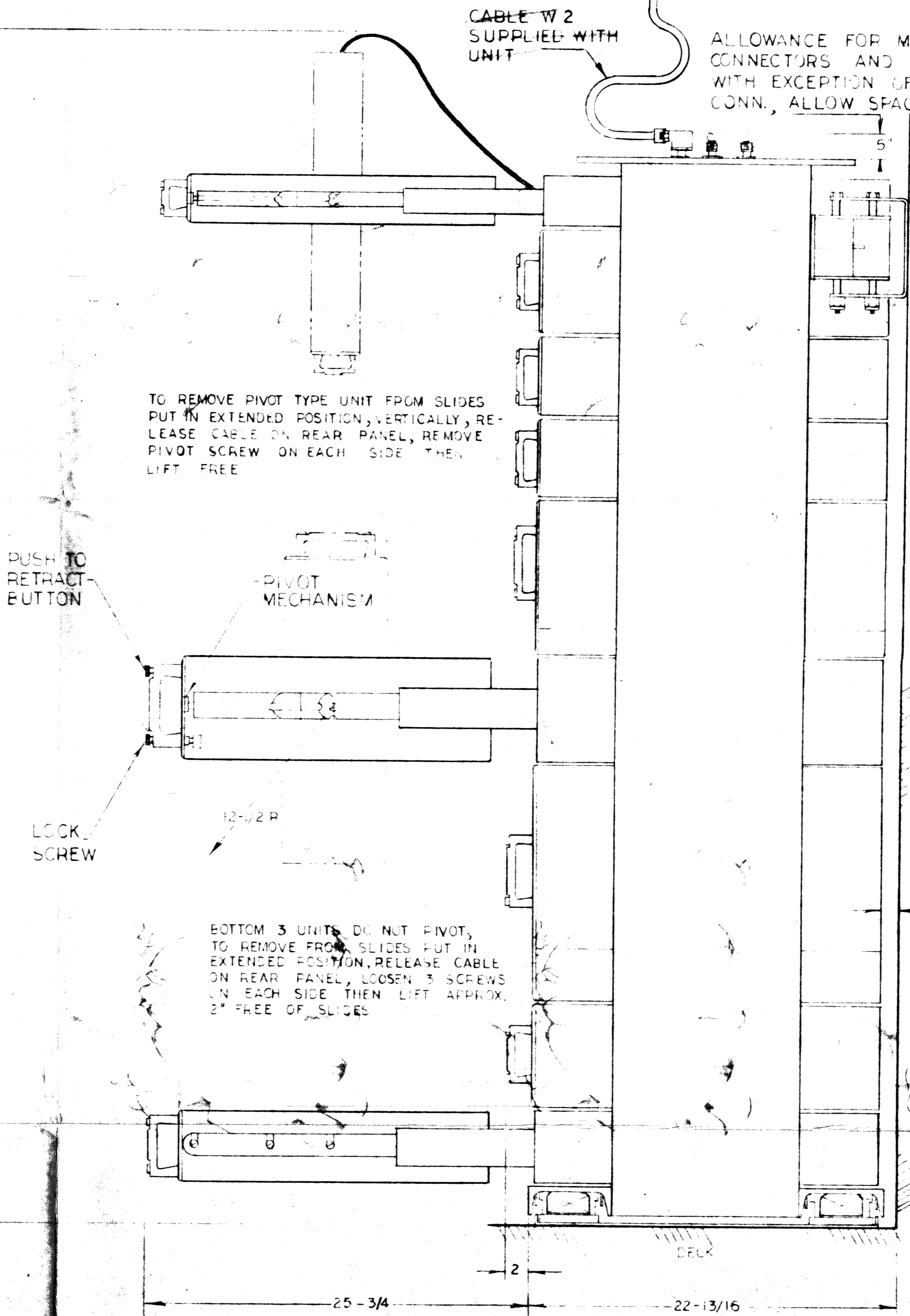
72 MAX INCLUDING SHOCK VIB



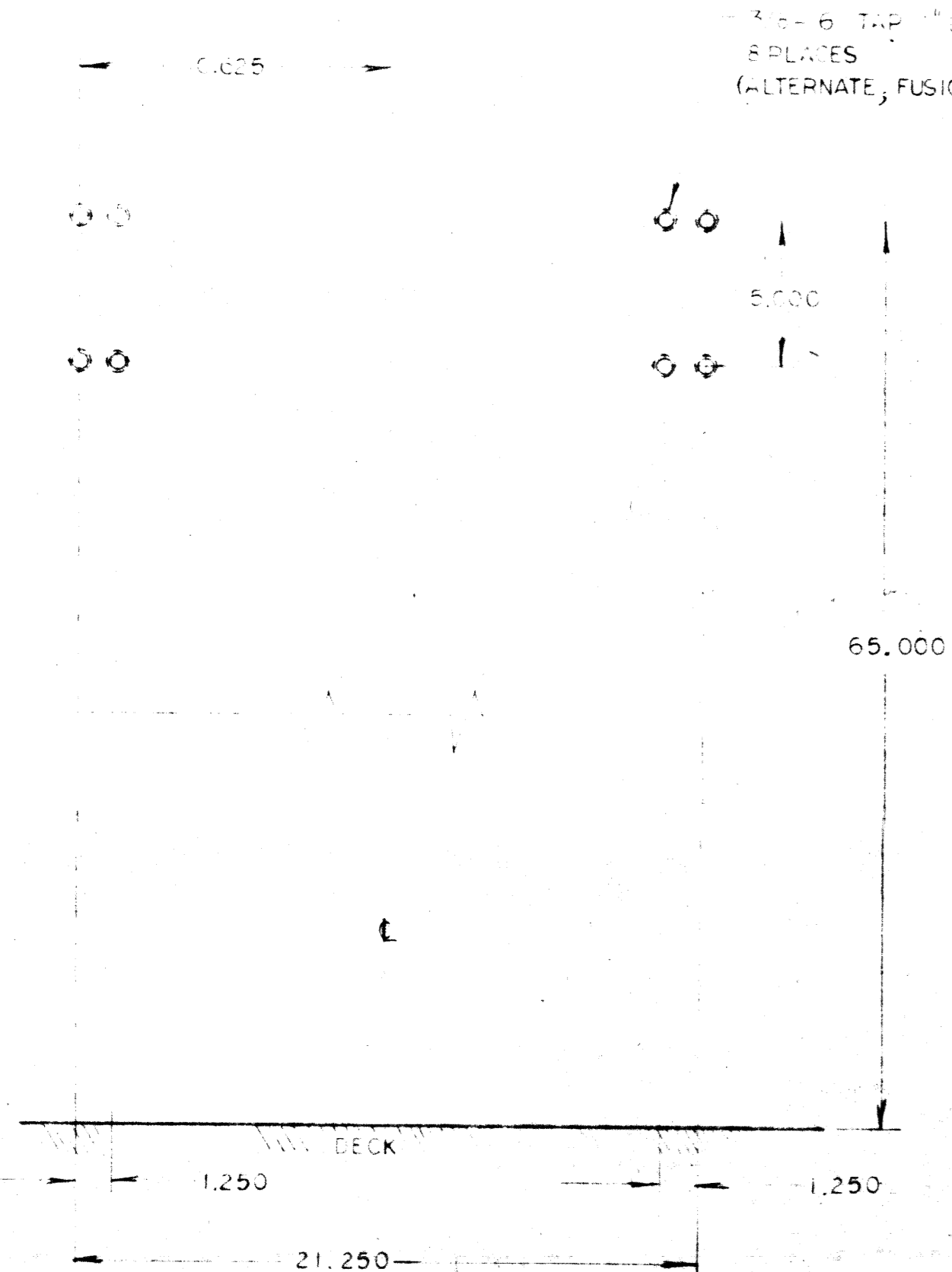
RECOMMENDED INSTALLATION OF WATER COOLING SYSTEM USING ABOVE LISTED ITEMS



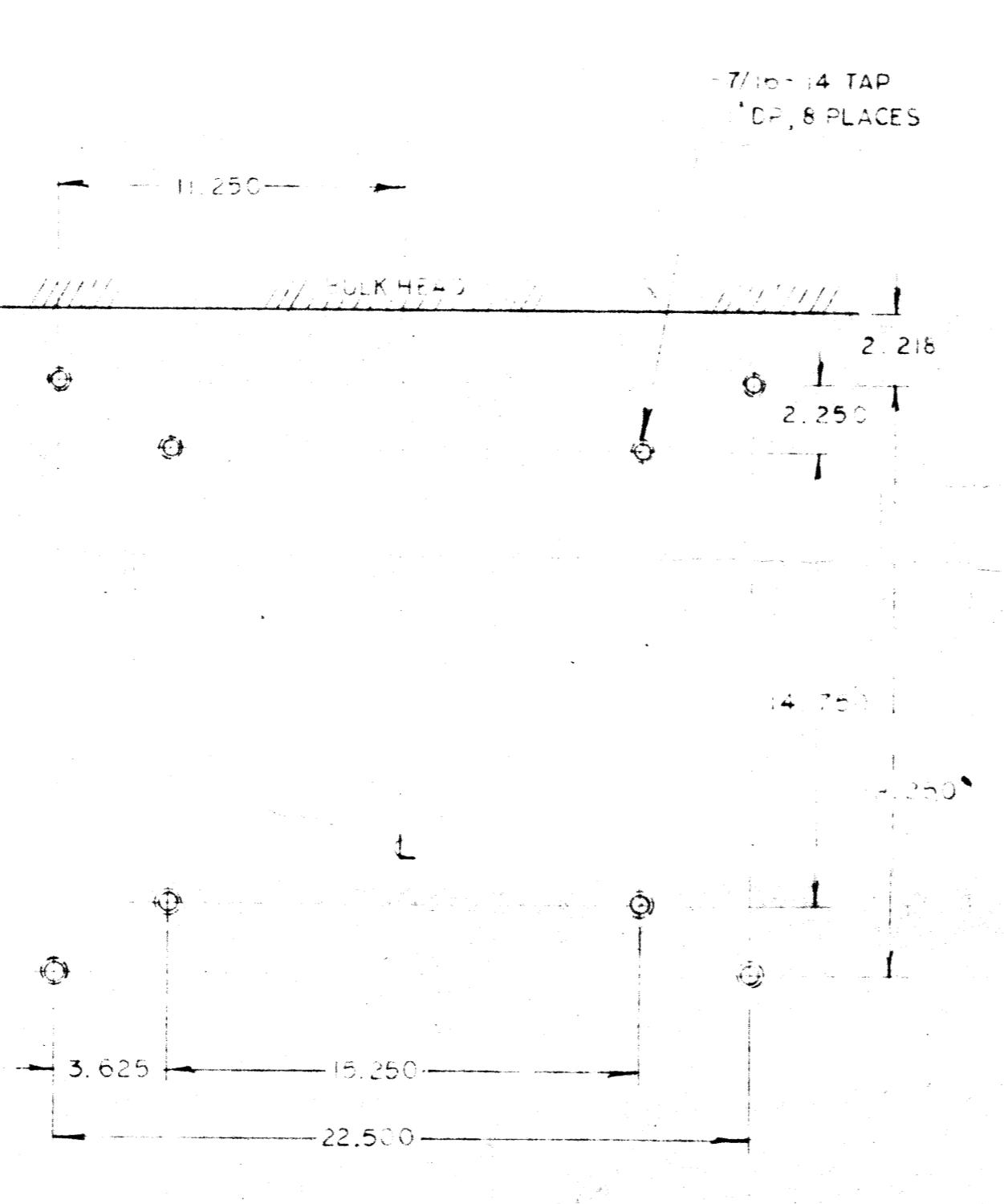
FRONT VIEW SCALE: 1:6



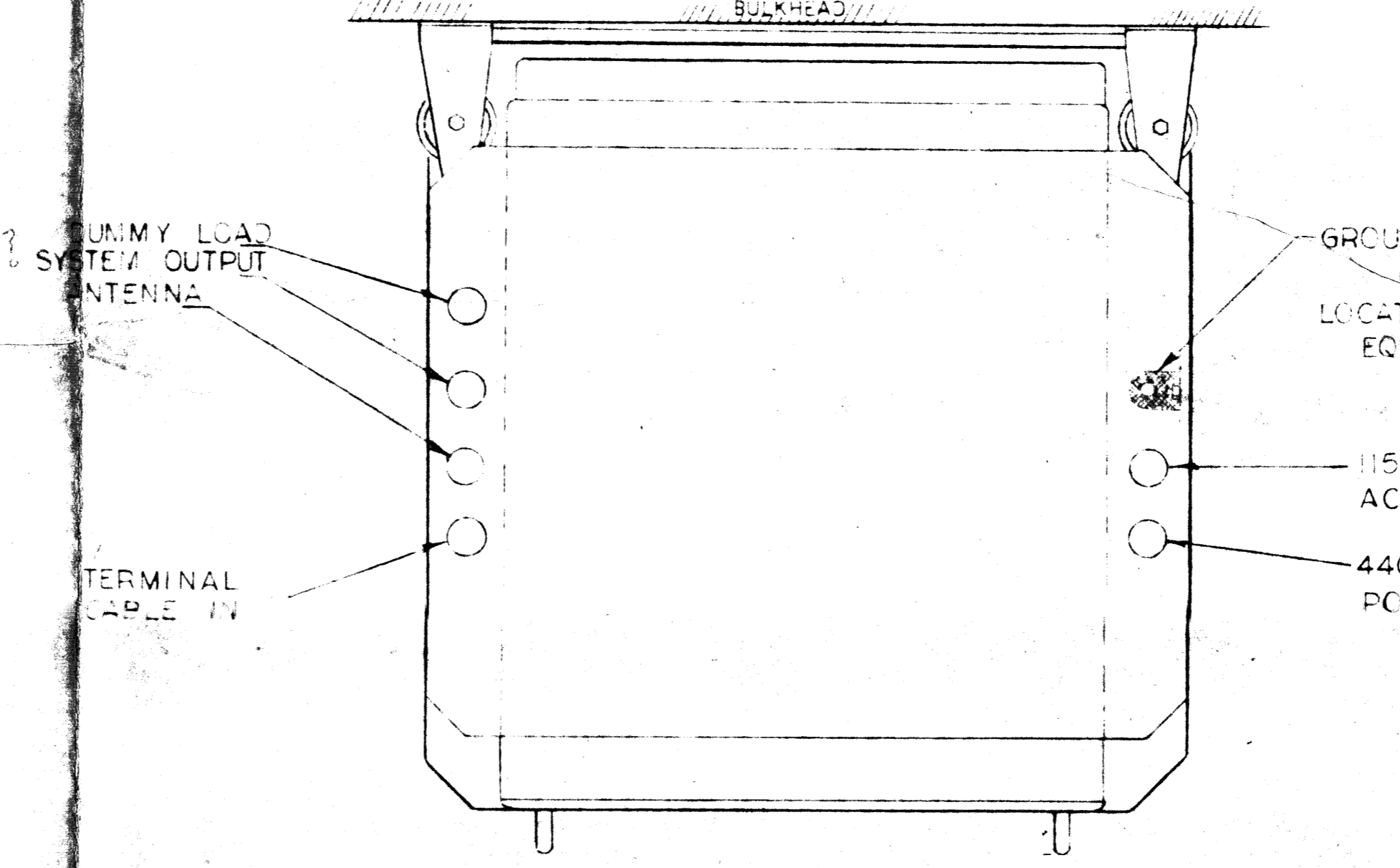
SIDE VIEW SCALE: 1:6



BULK HEAD MTG FOR STABILIZERS SCALE: 1:5



DECK MTG. HOLES FOR SHOCKS SCALE: 1:5



VIEW A-A TOP VIEW OF RACK SCALE: 1:4

REV	DESCRIPTION	DATE	APPR

NOTES

- 1 - EQUIPMENT BUILT TO MIL-E-16400
- 2 - POWER REQUIREMENTS
 - I - 115V AC 100% 50-60 CPS ± 0% 1 PHASE POWER CONSUMPTION - 1KW
 - II - 440V AC 100% 400 CPS ± 10% 3 PHASE POWER CONSUMPTION - 5KW
- 3 - HEAT DISSIPATION
 - STANDBY CONDITION - 4KW
 - OPERATING CONDITION - 6KW
- 4 - COOLING SYSTEM
 - I - VENTILATION CAPACITY
 - (A) TOTAL CFM - 250
 - (B) INTAKE - THRU FILTERS ON FRONT PANEL
 - (C) EXHAUST - THRU REAR PANELS ALLOW APPROX 3/4" CLEARANCE FROM REAR OF WALL TO BULKHEAD
 - II - WATER REQUIREMENTS
 - (A) FLOW RATE - MIN 1.5 GALLONS/MINUTE
 - (B) PURITY - DISTILLED WATER WITH MAX CONTAMINATION OF 0.65 (EQUIV OF SEA WATER)
 - (C) TEMPERATURE - MAX 35°C AT INPUT
 - (D) MIN. ABOVE DEW POINT AT ALL TIMES
 - (E) PRESSURE - MAX 100 LBS/SS INCH GAUGE (INLET) MIN DIFF. 10 LBS NORMAL PRESSURE INLET 50 PSIG NORMAL PRESSURE OUTLET 40 PSIG
- 5 - TEMPERATURE
 - A - UNIT TEMPERATURE RANGE - 0°C TO +50°C
 - WEIGHT
 - ENTIRE UNIT WEIGHT - 80 LBS
- 6 - CABLE
 - I - 115 V AC LINE (FROM POWER SOURCE)
 - (A) TYPE - 1/4 TYPE 5 (3 WIRE)
 - (B) CONNECTOR - MS 3106-103 CABLE CONNECTOR MS 3102-101 EQUIP CONNECTOR
 - (C) LENGTH - FROM SOURCE TO RACK (AS REQUIRED)
 - II - 440 V AC LINE (FROM POWER SOURCE)
 - (A) TYPE - 3/4 TYPE 5 (4 WIRE)
 - (B) CONNECTOR - MS 3106-220-45 CABLE CONNECTOR MS 3102-220-45 EQUIP CONNECTOR
 - III - TERMINAL CABLE (FROM AN/SSW-1A)
 - (A) TYPE - RGA-10 (TYP) TWISTED PAIR INDIVIDUALLY SHIELDED (DIA) 1.46 75 OHMS IMPEDANCE 28 PFD/FT
 - (B) CONNECTOR - MS 3106-824-28 S
 - (C) CLAMP - AN 207-16
 - (D) LENGTH - FROM AN/SSW-1A TO RACK (AS REQD) (NOT TO EXCEED 600")
 - IV - LOAD CABLE (FROM 1 KW DUMMY LOAD)
 - (A) TYPE - RG 17
 - (B) CONNECTOR - UG 154-U CABLE CONNECTOR UG 287 U EQUIP CONNECTOR
 - C LENGTH - AS REQUIRED FROM LOAD
 - V - ANTENNA CABLE -
 - (A) TYPE - RG 269
 - (B) CONNECTOR -
 - (C) LENGTH - AS REQUIRED FROM ANTENNA TO RACK (MAX LENGTH 150 FEET) (OVER 150 FEET USE TYPE RG 270/U)
- 7 - ALL EXTERNAL CABLING, WATER INLET AND OUTLET PIPING, MUST BE ABLE TO FLEX ONE INCH IN ANY DIRECTION TO ACCOMMODATE RACK MOVEMENT DURING SHOCK AND VIBRATION

PRELIMINARY COPY

Contract No. bsr 87289-1
 PRELIMINARY
 12/21/51

NO	TITLE	DRAWING NO.
1	AN/SRC-17 RADIO SET SYSTEM DIAGRAM	D-201-001-005
2	INTERCONNECTING CABLING	D-201-001-004
3	PRIMARY POWER DISTRIBUTION	D-201-001-006
4	RUNNING SHEET FOR INTERCONN CABLES	D-201-001-007

NAVY DEPARTMENT WASHINGTON, D.C.
F201-001-003 BUREAU OF SHIPS

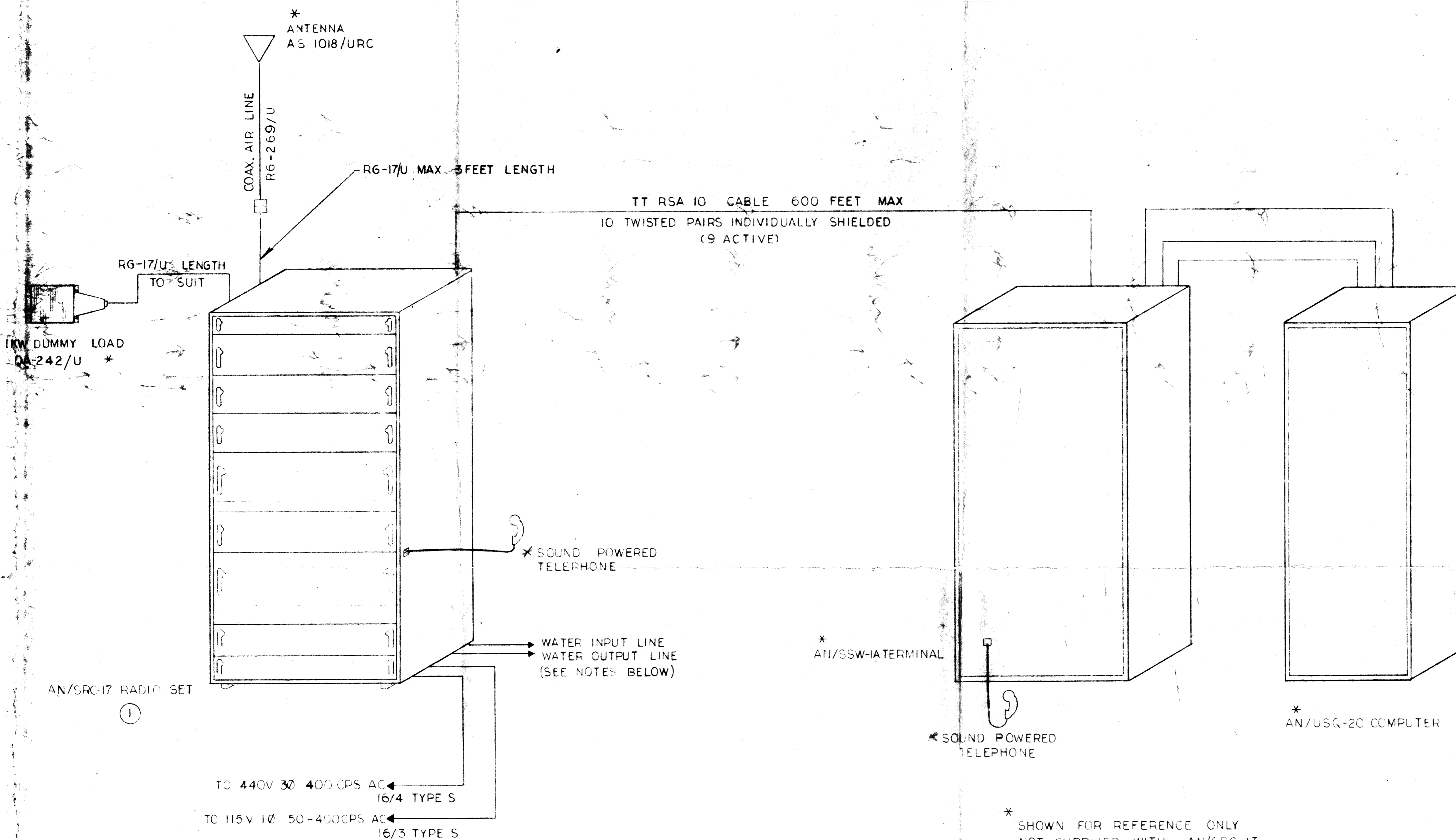
EXAMINED OFFICIAL SIGNATURE
 DESIGNED
 TRACED
 DRAWN

APPROVED DATE

FOR CHIEF OF BUREAU
 ELECTRONICS DRAWING NO. REV.

RE SCALE SHEET 1 OF 1

REVISION		DATE	APPR
REV	DESCRIPTION		



POWER REQUIREMENTS (AS NOTED ABOVE)

ALLOWABLE VARIATION
 VOLTAGE ± 10 %
 FREQUENCY ± 5 %
POWER FACTOR 7 KVA 085 PF RUN
 5 KVA STANDBY
 30VA SECURE

WATER REQUIREMENTS
 INPUT AND OUTPUT LINE MIN
 1/2" PIPE
 FOR DETAILS SEE REF DWG. NO. F-201-001-003

TOTAL WEIGHT APPROX 800 LBS UNCRATED
 APPROX 900 LBS CRATED

BOX - 80" x 28" x 27" CUBICAL CONTENT 24 CU FT

VACUUM TUBE SUMMARY

- 2 X 7213
- 2 X 4CX25CK
- 4 X 6816
- 2 X 7586
- 4 X 7587
- 1 X 5636

NOTES

1. KEEP CRATES IN UPRIGHT POSITION UNTIL UNPACKED
2. NOTE ARROW POINTING TO TOP ON CRATE
3. NOTE WEIGHT MARKED ON CRATE
4. DO NOT USE HAMMER OR PINCH BAR TO UNPACK - USE A NAIL PULLER

End 1 to BuShips Wb Ser 68762-1 of 17/63

PRELIMINARY COPY

REFERENCES		
NO	TITLE	DRAWING NO
1	AN SRC-17 RADIO SET OUTLINE	F-201-001-003
2	INTERCONNECTING CABLING	D-201-001-004
3	PRIMARY POWER DISTRIBUTION	D-201-001-006
4	RUNNING SHEET - INTERCONN. CABLES	D-201-001-007
5		

D201-001-005

NAVY DEPARTMENT WASHINGTON DC

BUREAU OF SHIPS

SYSTEM DIAGRAM
 AN/SRC-17 RADIO SET
 CONTRACT NO 6sr 87289

EXAMINED	DATE
OFFICIAL SIGNATURE	
ENGINEER	
REVIEWED	
TRACED	
DRAWN	

FOR CHIEF OF BUREAU
 ELECTRONICS DRAWING NO

SCALE: 1" = 1' SHEET 1 OF 1