

CA-551

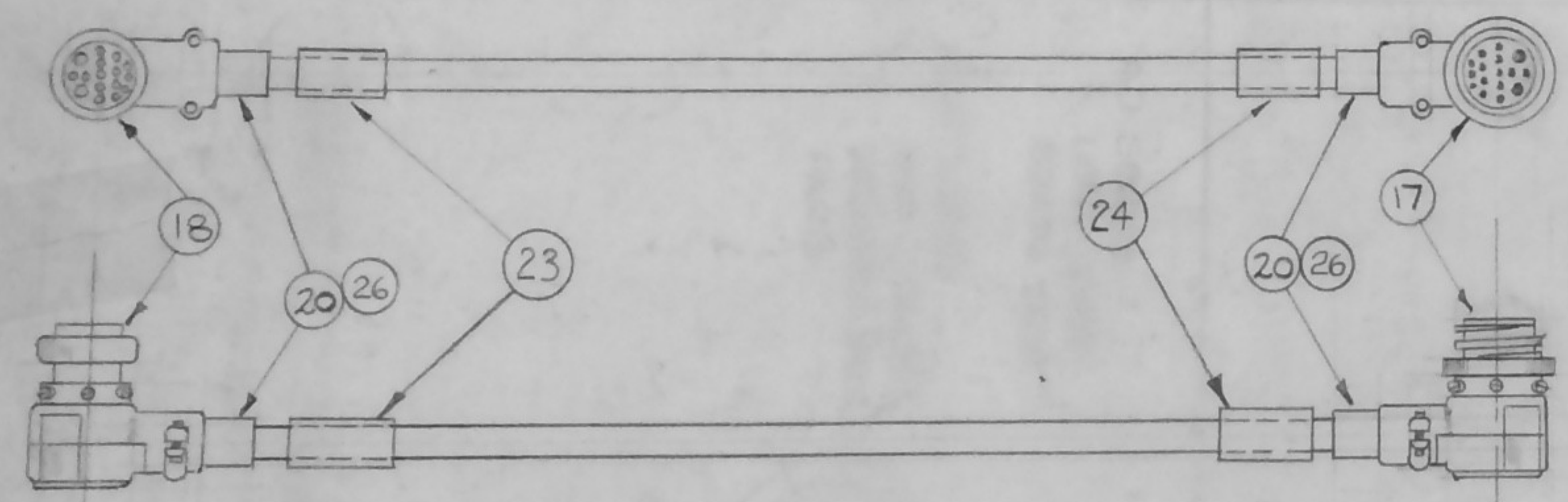
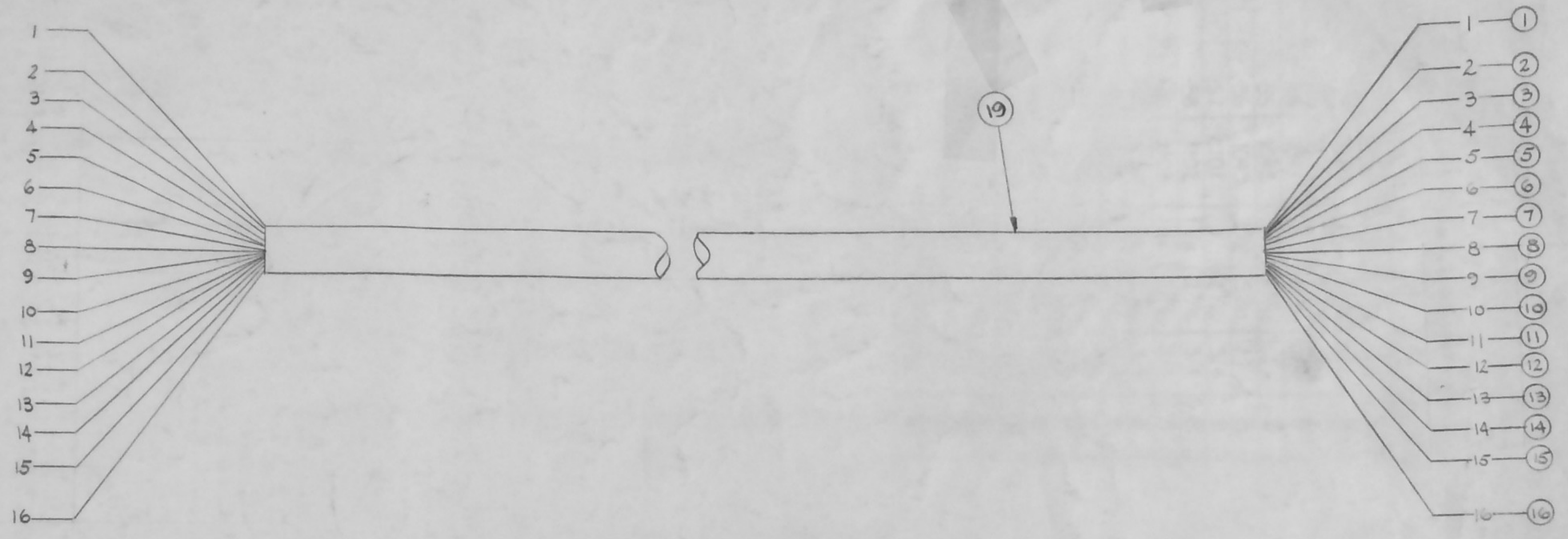
NOTICE TO PERSONS RECEIVING THIS DRAWING

THE TECHNICAL MATERIEL CORPORATION claims proprietary right in the material disclosed hereon. This drawing is issued in confidence for engineering information only and may not be reproduced or used to manufacture anything shown hereon without permission from THE TECHNICAL MATERIEL CORPORATION to the user. This drawing is loaned for mutual assistance and is subject to recall at any time.

Property of:
THE TECHNICAL MATERIEL CORPORATION
MAMARONECK, NEW YORK

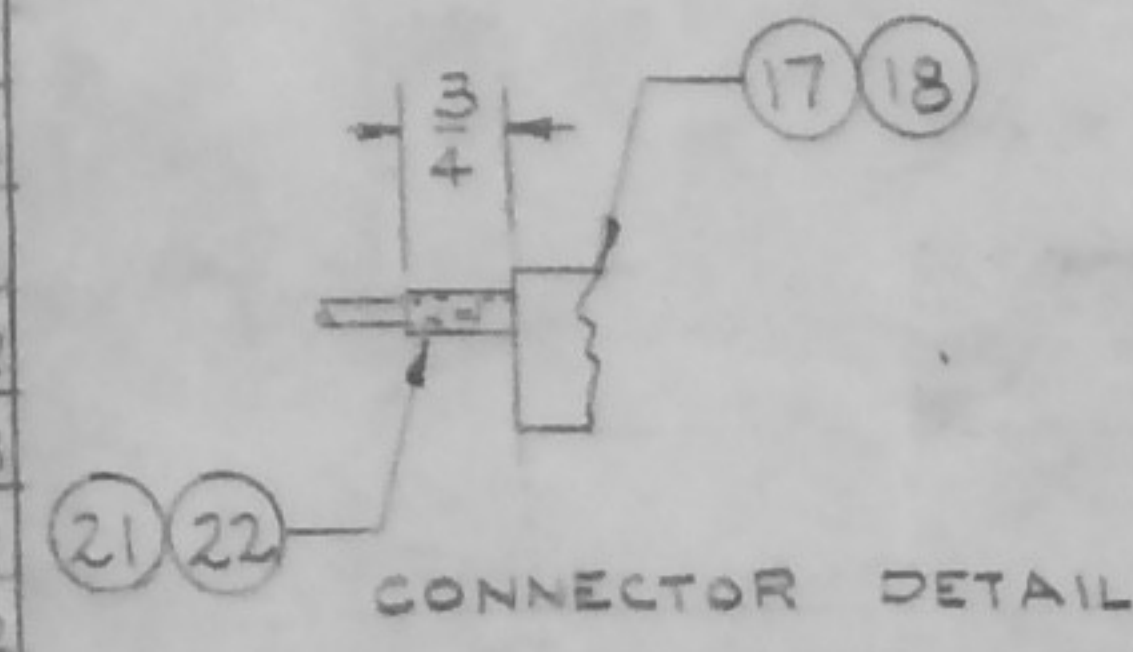
ITEM 17
(PL-187)
PIN NO'S

ITEM 18
(PL-186)
PIN NO'S



NOTE - FOR TOTAL WIRE LENGTHS, ADD 3" TO LENGTHS SHOWN.

FROM	TO	LENGTH		ITEM 19	COLOR	USED ON	TMC PART NO.	USE WIRE MARKER	
		IN FEET	IN INCHES					ITEM 23	ITEM 24
CPP-2	CHL	7'-3"	87	PX100-1-438	Black	RAK-11,20	CA-551-1	LA107-16-P101	LA107-16-P503
CPP-2	CLL	8'-0"	96	PX100-4-438	Yellow	RAK-11,20	CA-551-2	LA107-16-P706	LA107-16-P501
CPP-2	CMD	9'-0"	108	PX100-3-438	Orange	RAK-11,20	CA-551-3	LA107-16-P304	LA107-16-P502
CPP-2	CHL	7'-0"	84	PX100-1-438	Black	AX-239	CA-551-4	LA107-16-P101	LA107-16-P503
CPP-2	CLL	8'-5"	101	PX100-4-438	Yellow	AX-239	CA-551-5	LA107-16-P706	LA107-16-P501
CPP-2	CMD	9'-5"	113	PX100-3-438	Orange	AX-239	CA-551-6	LA107-16-P304	LA107-16-P502
CPP-2	CHL	9'-5"	113	PX100-1-438	BLACK	AX-	CA-551-7	LA107-16-P101	LA107-16-P503



2	26	MS3420-12A	BUSHING, CABLE	
X	25	BS-100	SOLDER, TIN ALLOY	
1	24	SEE CHART	SLEEVING LETTERED WIRE MARKER	(SEE CHART)
1	23	SEE CHART	SLEEVING LETTERED WIRE MARKER	(SEE CHART)
	22	PX-100-1-106	INSULATION, SLEEVING	
	21	PX-100-1-148	INSULATION, SLEEVING	
2	20	MS3420-8A	BUSHING, CABLE	
	19	See Chart	INSULATION, SLEEVING	(See Chart)
1	18	PL-186	CONNECTOR, PLUG FEMALE	
1	17	PL-187	CONNECTOR, PLUG MALE	
	16	MWC-22(7)U 2	CABLE, INSULATED	RED
	15	MWC-16(19)U95		WH GREEN
	14	MWC-22(7)U 91		WH BROWN
	13	MWC-16(19)U 5		GRN.
	12	MWC-16(19)U94		WH YEL.
	11	MWC-22(7)U 4		YELLOW
	10		97	WH VIOLET
	9		7	WH BROWN
	8	MWC-22(7)U 92		RED
	7	MWC-16(19)U 3		ORANGE
	6	MWC-22(7)U 93		ORANGE
	5		96	BLUE
	4		6	BLUE
	3		0	BLK.
	2		90	GRN.
	1	MWC-22(7)U 1	CABLE INSULATED	GRN.

REQ. ITEM	PART NO.	DESCRIPTION	SYMBOL
THE TECHNICAL MATERIEL CORP. MAMARONECK, NEW YORK			
CABLE POWER			
STOCK SIZE			
MATERIAL			
TYPE & TEMPER			
DRAWN		ELEC. DES. APP.	MECH. DES. APP.
HEAT TREAT. SPEC.		FINAL APPROVAL	
FINISH & SPEC. NO.			

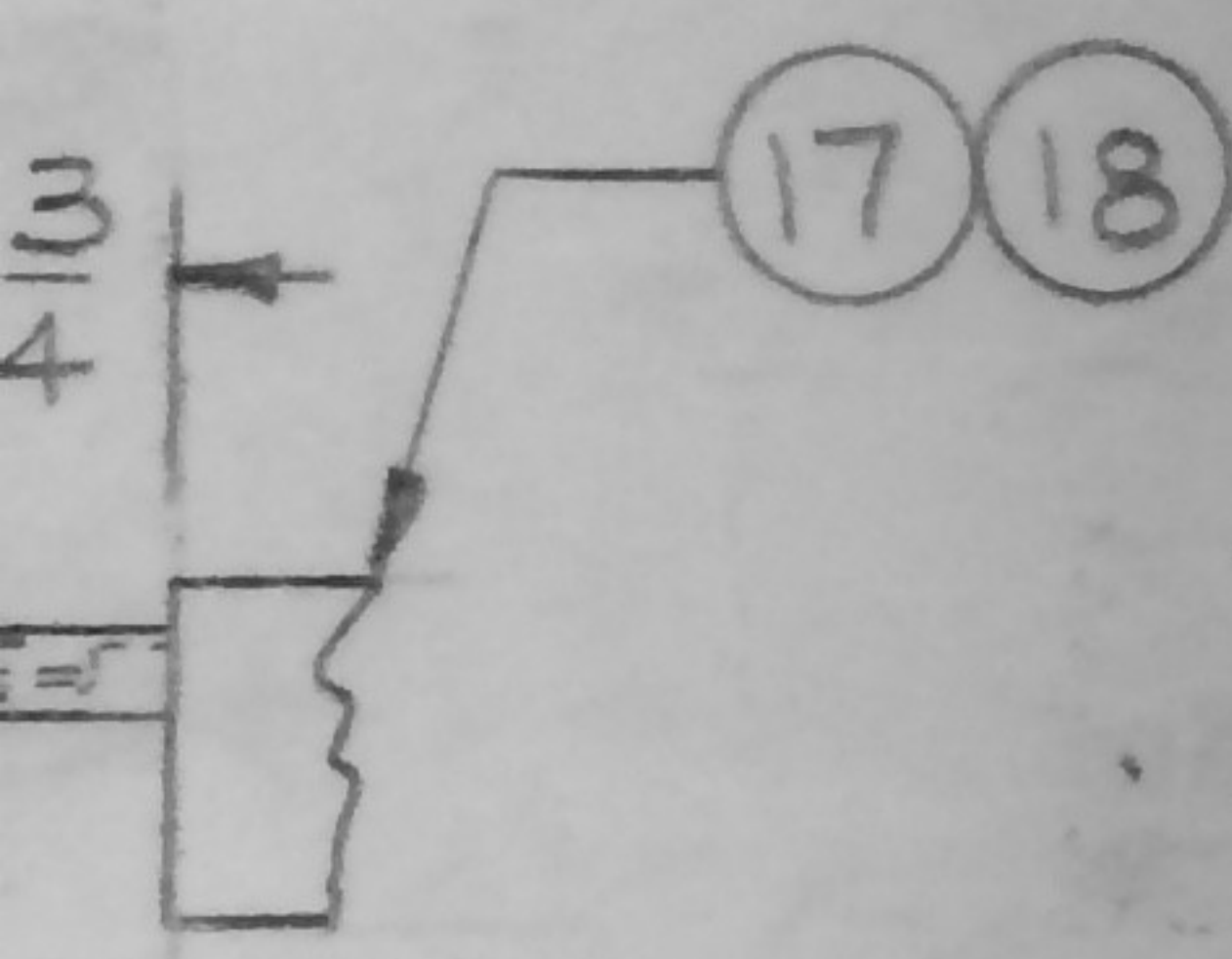
STANDARD DRAWING

REV.	DESCRIPTION	DATE	CH. NO.	DRAFTS	CHECKER	ENG. APP.
1	IT. 23 & 24 REVISED	3-6-67	17979			
2	IT. 26 ADDED TO B/M & PICT. CA-551-7 ADD TO CHART, IT. 20 WAS MS3420-10A	8-6-64	12066			
3	ITEM 25 ADDED, CHART REVISED ITEMS 23 & 27 WERE LA105-24	4-16-64	11158	AM		

SEE CHART	AX-239			
SEE CHART	RAK-11,20			5-3-60
REQ. PER UNIT	MODEL	SECTION	ASBY. NO.	DATE

CA 551 16

WIRE LENGTHS,
AS SHOWN



CONNECTOR DETAIL

2	26	MS3420-12A	BUSHING, CABLE	
X	25	BS-100	SOLDER, TIN ALLOY	
1	24	SEE CHART	SLEEVING LETTERED, WIRE MARKER	(SEE CHART)
1	23	SEE CHART	SLEEVING LETTERED, WIRE MARKER	(SEE CHART)
	22	PX-100-1-106	INSULATION, SLEEVING	
	21	PX-100-1-148	INSULATION, SLEEVING	
2	20	MS-3420-8A	BUSHING, CABLE	
	19	See Chart	INSULATION, SLEEVING	See Chart
1	18	PL-186	CONNECTOR, PLUG FEMALE	
1	17	PL-187	CONNECTOR, PLUG MALE	
	16	MWC-22(7)U 2	CABLE, INSULATED	RED.
	15	MWC-16(19)U95		WH. GREEN
	14	MWC 22(7) U 91		WH. BROWN
	13	MWC 16 (19) U 5		GRN.
	12	MWC 16 (19) U 94		WH- YEL.
	11	MWC 22(7) U 4		YELLOW
	10	↑ 97		WH VIOLET
	9	↓ 7		VIOLET
	8	MWC 22(7) U 92		WH- RED
	7	MWC 16(19)U 3		ORANGE
	6	MWC 22(7) U 93		WH ORANGE
	5	↑ 96		WH- BLUE
	4	↑ 6		BLUE
	3	↓ 0		BLK.
	2	↓ 90		WH- BLK
	1	MWC 22(7) U 1	CABLE INSULATED	BROWN

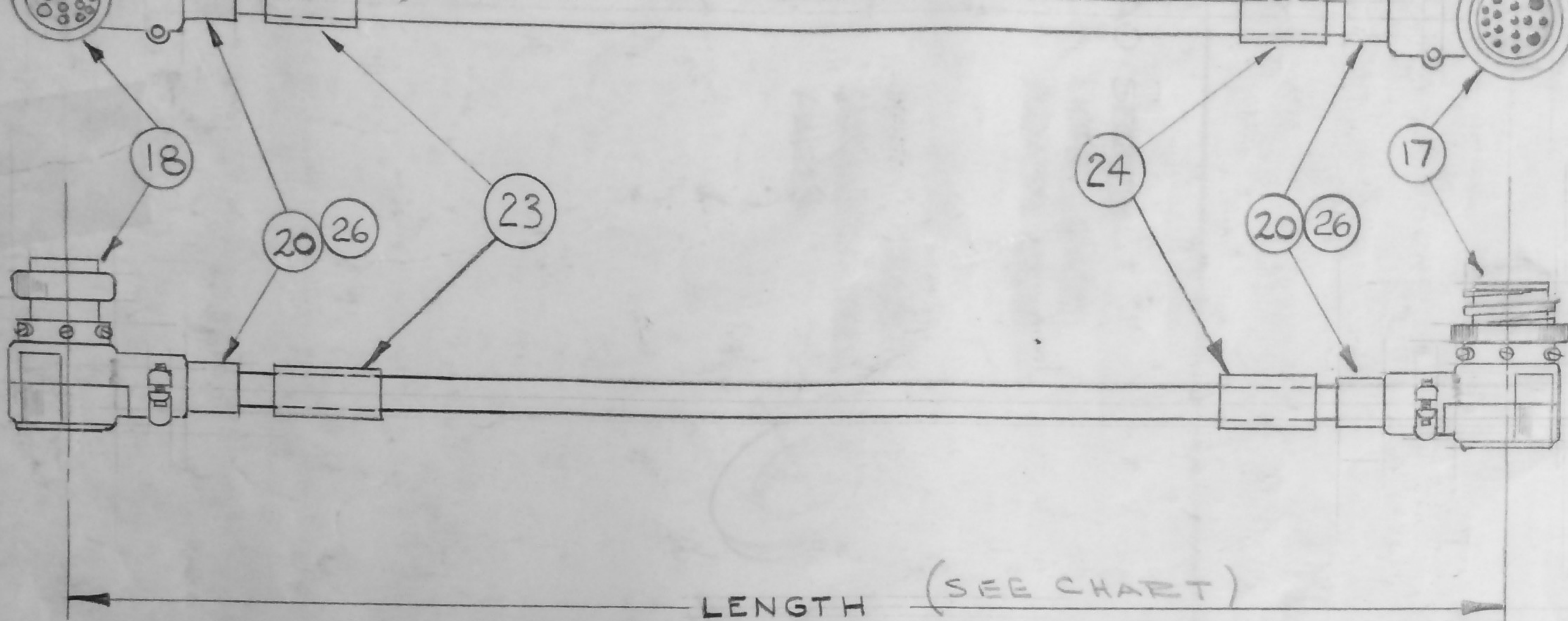
REQ.	ITEM	PART NO.	DESCRIPTION	SYMBOL
------	------	----------	-------------	--------

THE TECHNICAL MATERIEL CORP.
MAMARONECK, NEW YORK

CABLE POWER

E
D
C
B

1 1/2"	18 3/4"	19 3/4"	20"	16 1/2"	1	8	PL-101-1	CONNECTOR, MALE
					7	8	PX-100-1-208	INSULATION, SLEEVING
					6	8	MI-101-14	CABLE, SHIELD, FLEXIBLE
					5	8	SRIR-3/57)-22-000	CABLE, INSULATED, STRANDED
					4	8	SRIR-3/47)-22-000	CABLE, INSULATED, STRANDED
					3	8	SRIR-3/47)-22-000	CABLE, INSULATED, STRANDED



NOTE ~ FOR TO
ADD 3" TO LEN

FROM	TO	LENGTH		ITEM 19	COLOR	USED ON	TMC PART NO.	USE WIRE MARKER	
		IN FEET	IN INCHES					ITEM 23	ITEM 24
CPP-2	CHL	7'-3"	87"	PX100-1-438	Black	RAK-11,20	CA-551-1	LA107-16-P101	LA107-16-P503
CPP-2	CLL	8'-0"	96"	PX100-4-438	Yellow	RAK-11,20	CA-551-2	LA107-16-P706	LA107-16-P501
CPP-2	CMO	9'-0"	108"	PX100-3-438	Orange	RAK-11,20	CA-551-3	LA107-16-P304	LA107-16-P502
CPP-2	CHL	7'-0"	84"	PX100-1-438	Black	AX-239	CA-551-4	LA107-16-P101	LA107-16-P503
CPP-2	CLL	8'-5"	101"	PX100-4-438	Yellow	AX-239	CA-551-5	LA107-16-P706	LA107-16-P501
CPP-2	CMO	9'-5"	113"	PX100-3-438	Orange	AX-239	CA-551-6	LA107-16-P304	LA107-16-P502
CPP-2	CHL	9'-5"	113"	PX100-1-438	BLACK	AX-	CA-551-7	LA107-16-P101	LA107-16-P503

(21) (22)

REV. LTR.	DESCRIPTION	DATE	CH. NO.	DRAFTS	CHECKER	ENG. APP.
	IT. 23 & 24 REVISED	3-15-67	17979	WJ	CFB	ROR
07.5	IT. 26 ADDED TO B/M & PICT. CA-551-7 ADD. TO CHART, IT 20 WAS MS3420-10A	8.6.64	12066	WJB	NO.	QC
1	ITEM 25 ADDED, CHART REVISED ITEMS 23 + 24 WERE LA105-24	4-1-64	11158	A.M.	file	CFB

TOLERANCES

SCALE:

MAXIMUM ALLOWABLE TOLERANCES HAVE BEEN DETERMINED AND ANY DEVIATIONS WILL BE CAUSE FOR REJECTION.
REMOVE ALL BURRS AND SHARP EDGES

STANDARD DRAWING

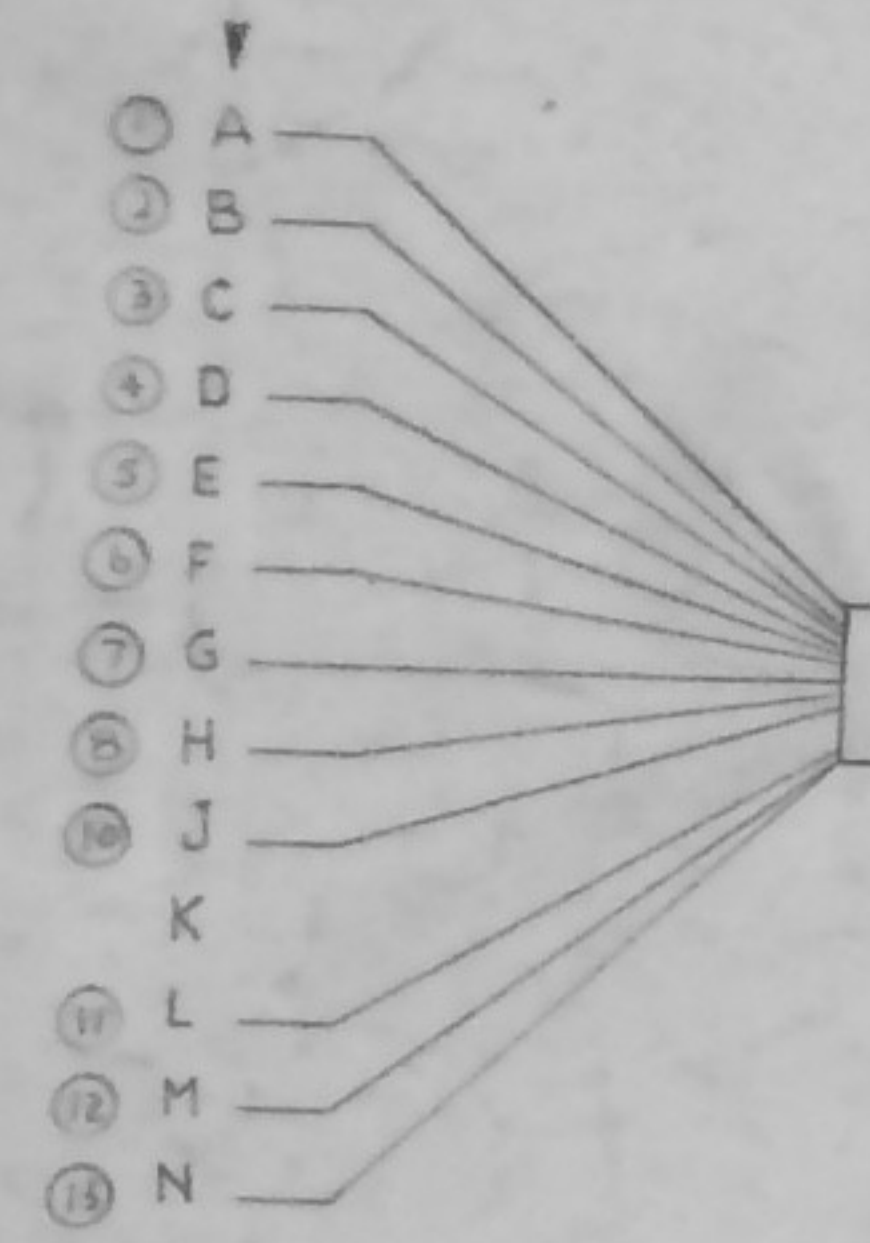
SEE CHART	AX-239	
SEE CHART	RAK-11,20	
REQ PER UNIT	MODEL	SECTION

A 6 5 4

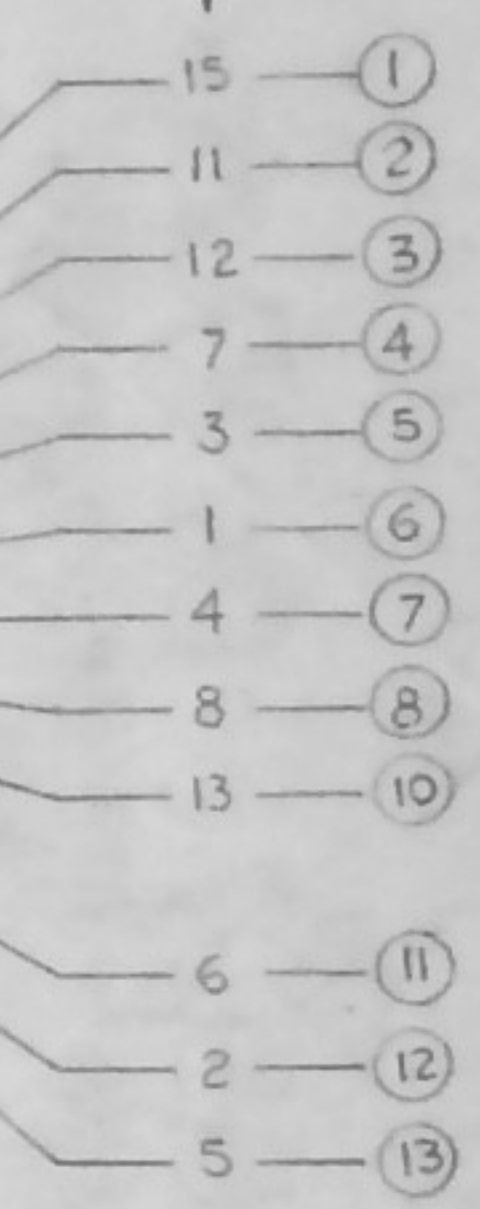
THE TECHNICAL MATERIEL CORPORATION claims proprietary right in the material disclosed herein. This drawing is issued in confidence for engineering information only and may not be reproduced or used to manufacture any thing shown hereon without permission from THE TECHNICAL MATERIEL CORPORATION to the user. This drawing is loaned for mutual assistance and is subject to recall at any time.

Property of:
THE TECHNICAL MATERIEL CORPORATION
MAMARONECK, NEW YORK

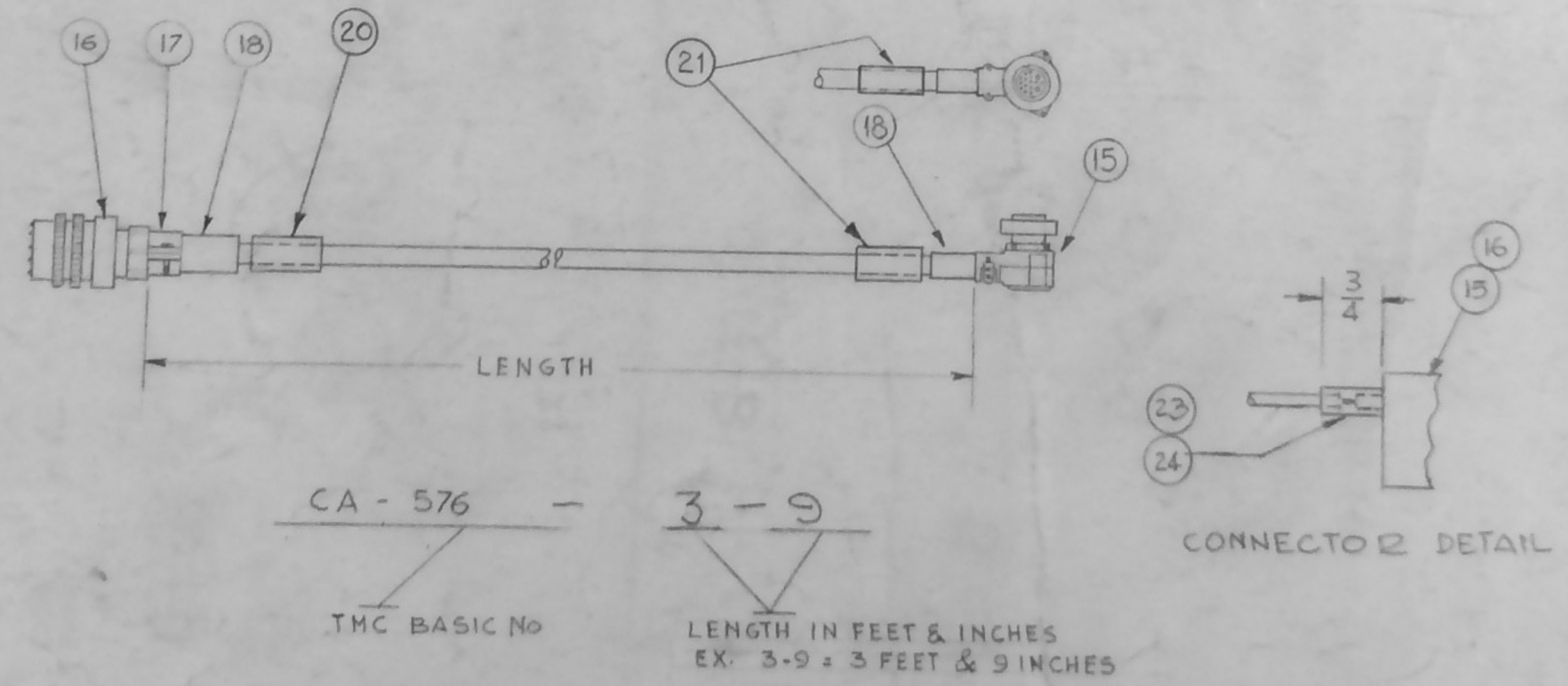
MS 3106 B20-27P
PIN NO'S



PL - 186
PIN NO'S



TMC PART NO.	LENGTH	USED ON	MODEL	ITEM 20	ITEM 21
CA-576-8-5	8ft. 5IN.	RAK-11,20	SBG	LA-107-16-P402	LA-107-16-P2707
CA-576-6-0	6ft. 0IN.	AX-239	GPT-10K	LA-107-16-P402	LA-107-16-P2707



X	24	PX100-1-106	INSULATION, SLEEVING.		
X	23	PX100-1-148	INSULATION, SLEEVING		
	22	DELETED			
	21	SEE CHART	SLEEVING LETTERED, WIRE MARKER		SEE CHART
	20	SEE CHART	SLEEVING, LETTERED, WIRE MARKER		SEE CHART
X	19	BS 100	SOLDER, SOFT		
	18	MS 3420-10A	BUSHING, CABLE		
	17	MS 3057-12A	CLAMP, CABLE		
	16	MS 3106 B20-27P	CONNECTOR, PLUG, MALE		
	15	PL 186	CONNECTOR, PLUG, FEMALE		
	14	PX 100-1-438	INSULATION, SLEEVING		
	13	MWC 16 (19) U-93	CABLE, INSULATED		BIK
	12	MWC 18 (16) U-94	CABLE, INSULATED		WHITE ORANGE
	11	MWC 18 (16) U-0	CABLE, INSULATED		WHITE YELLOW
	10	MWC 16 (19) U-6	CABLE, INSULATED		BIK
	9	NOT USED			BLUE
	8	MWC 22 (7) U-2			
	7	MWC 22 (7) U-92			RED
	6	MWC 16 (19) U-9			PINK
	5	MWC 18 (16) U-8			WHITE
	4	MWC 18 (16) U-7			GREY
	3	MWC 16 (19) U-90			VIOLET
	2	MWC 16 (19) U-91			WHITE BLACK
	1	MWC 16 (19) U-1	CABLE, INSULATED		WHITE BRN

REV	DESCRIPTION	DATE	CH. NO.	DRAFTS	CHECKER	ENG. APP.
F	ON IT 21 P2707 WAS 119 IT 17 WAS MS 3057-12. ON IT 20 P402 WAS 114	3-16-67	17979			
E	ITEM 23 & 24 ADDED. CONNECTOR DETAIL ADDED ITEM 22 DELETED. ITEM 7 WAS MWC 22(7)U-PINK	7-5-66	16492		G.D.L.	
D	ITEM 22 ADDED	4-1-64	11158		AM	
C	REV PART NO CHART (Item 21 Column) LA-105-24-2707 WAS LA-105-24-1104	7-26-64	4971		R.U.	
B	ITEM 20 & 21 ADDED	2-7-61	4092			
A	Part No. Chart Added. quantity of Item 17 was 2.	1/25/61	3987		J.M.	

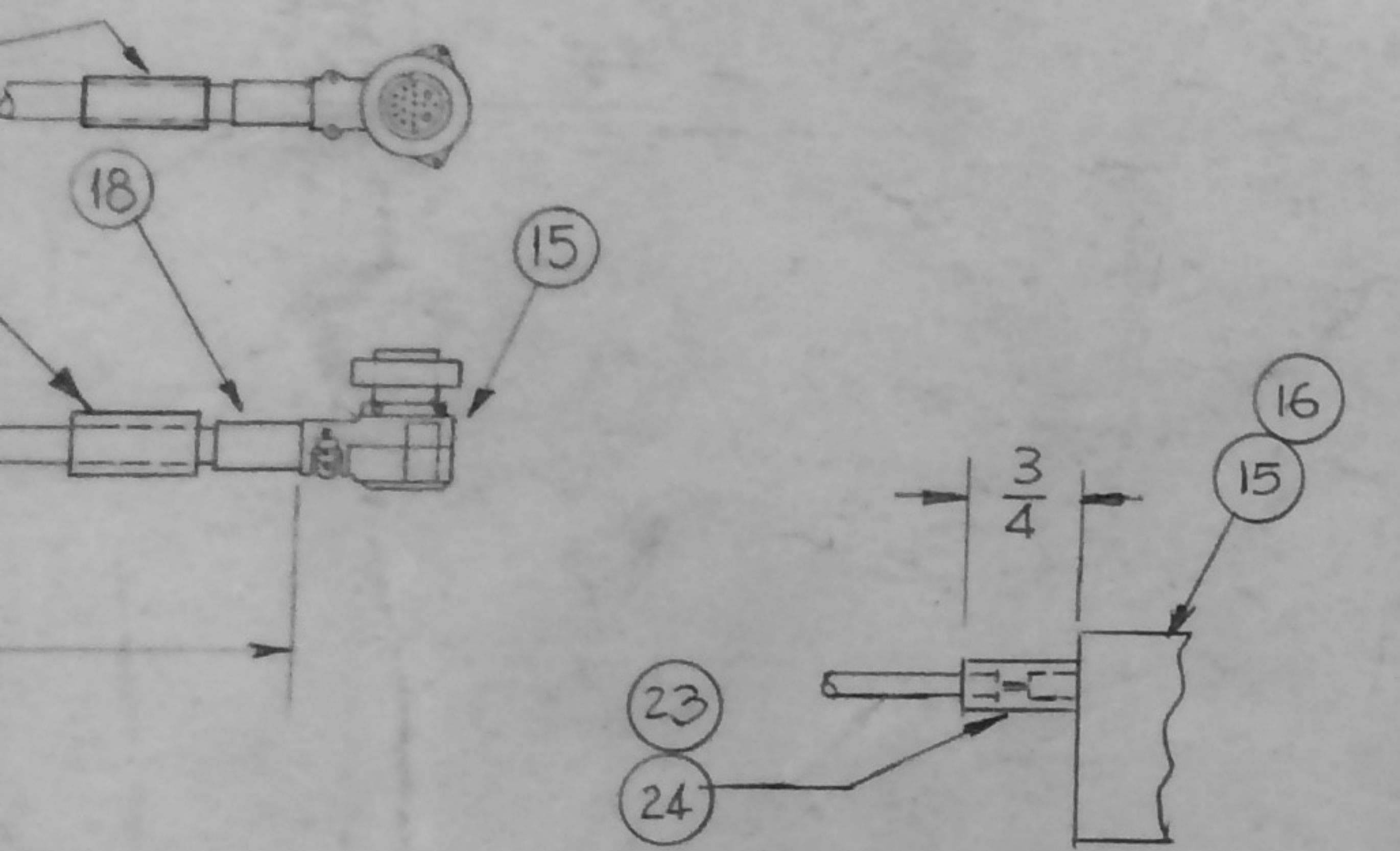
REQ. PER UNIT	MODEL	SECTION	ASS'Y. NO.	DATE
1	CHG-2		RAK-11,20	12-19-61
1	CHG-1		AX-239	11-1-1960

UNLESS OTHERWISE SPECIFIED:
DIMENSIONS ARE IN INCHES
TOLERANCES ON
FRACTIONS ± 1/64
DECIMALS ± .005
ANGLES ± 1/2°

SCALE
MAXIMUM ALLOWABLE TOLERANCES HAVE BEEN DETERMINED AND ANY DEVIATIONS WILL BE CAUSE FOR REJECTION.
REMOVE ALL BURRS & SHARP EDGES

REQ. ITEM	PART NO.	DESCRIPTION	SYMBOL
		THE TECHNICAL MATERIEL CORP. MAMARONECK, NEW YORK	
		CABLE, POWER	
		STOCK SIZE	
		MATERIAL	
		TYPE & TEMPER	
		HEAT TREAT. SPEC.	
		FINISH & SPEC. NO.	
		ELEC. DES. APP.	
		MECH. DES. APP.	
		SHEET OF	

TMC PART NO.	LENGTH	USED ON	MODEL	ITEM 20	ITEM 21
CA-576-8-5	8ft. 5IN.	RAK-11,20	SBG	LA-107-16-P402	LA-107-16-P2707
CA-576-6-0	6ft. 0IN.	AX-239	GPT-IOK	LA-107-16-P402	LA-107-16-P2707



CONNECTOR DETAIL

IN FEET & INCHES
3 FEET & 9 INCHES

X	24	PX100-1-106	INSULATION, SLEEVING.	
X	23	PX100-1-148	INSULATION, SLEEVING	
	22	DELETED		
1	21	SEE CHART	SLEEVING LETTERED, WIRE MARKER	SEE CHART
1	20	SEE CHART	SLEEVING, LETTERED, WIRE MARKER	SEE CHART
X	19	BS 100	SOLDER, SOFT	
2	18	MS 3420-10A	BUSHING, CABLE	
1	17	MS 3057-12A	CLAMP, CABLE	
1	16	MS 3106 B20-27P	CONNECTOR, PLUG, MALE	
1	15	PL 186	CONNECTOR, PLUG, FEMALE	
	14	PX 100-1-438	INSULATION, SLEEVING	BIK
	13	MWC 16 (19) U-93	CABLE, INSULATED	WHITE ORANGE
	12	MWC 18 (16) U-94	CABLE, INSULATED	WHITE YELLOW
	11	MWC 18 (16) U-0	CABLE, INSULATED	BIK
	10	MWC 16 (19) U-6		BLUE
	9	NOT USED		
	8	MWC 22 (7) U-2		RED
	7	MWC 22 (7) U-92		PINK
	6	MWC 16 (19) U-9		WHITE
	5	MWC 18 (16) U-8		GREY
	4	MWC 18 (16) U-7		VIOLET
	3	MWC 16 (19) U-90		WHITE BLACK
	2	MWC 16 (19) U-91		WHITE BRN.
	1	MWC 16 (19) U-1	CABLE, INSULATED	BRN.

REQ. ITEM	PART NO.	DESCRIPTION	SYMBOL
1	PL-101-1	CONNECTOR, MALE	
2	PX-100-1-208	INSULATION, SLEEVING	
3	WT-101-4	CABLE, SHIELD, FLEXIBLE	
4	SRI-R-3(50)-22-U-90	CABLE, INSULATED, STRANDED	
5	SRI-R-3(45)-22-U-96	CABLE, INSULATED, STRANDED	
6	SRI-R-3(45)-22-U-96	CABLE, INSULATED, STRANDED	
7	SRI-R-3(45)-22-U-96	CABLE, INSULATED, STRANDED	
8	SRI-R-3(45)-22-U-96	CABLE, INSULATED, STRANDED	

REQ.	ITEM	PART NO.	DESCRIPTION	SYMBOL
THE TECHNICAL MATERIEL CORP. MAMARONECK, NEW YORK CABLE, POWER				
STOCK SIZE				
MATERIAL				
TYPE & TEMPER		DRAWN <i>[Signature]</i> CHECKED <i>[Signature]</i> FINAL APPROVAL <i>[Signature]</i>		
HEAT TREAT. SPEC.		66. CA-576		
FINISH & SPEC. NO.		ELEC. DES. APP. MECH. DES. APP. SHEET OF		

2	RAK-11,20	12-19-61
1	AX-239	11-1-1960
SECTION	ASS'Y. NO.	DATE

CA - 576

TMC BASIC No

F		ON IT. 21 P2707 WAS 115 IT. 17 WAS MS3057-12, ON IT 20. P402 WAS 114	3-16-67	17979	MK	JCB	JCB
E	+	ITEM 23 & 24 ADDED, CONNECTOR DETAIL ADDED. ITEM 22 DELETED. ITEM 7 WAS MWC 22(7) U-PINK	7-5-66	16492	G.D.L	JCB	JCB
D	+	ITEM 22 ADDED ITEMS 20 AND 21 WERE LA 105-24	4-1-64	11158	A.M.	Jwe	JCB
C	E1	ON PART NO. CHART (Item 21 Column) LA-105-24-2707 WAS LA-105-24-1106	7-26-61	4971	KU	JCB	JCB
B	DS, 6	ITEM 20 & 21 ADDED.	2-7-61	4092	M.A.F.	JCB	JCB
A	2E 3D	Part No. Chart Added. Quantity of Item 17 was (2).	1/25/61	3987	D.J.M.	JCB	JCB
SYM	ZONE	DESCRIPTION	DATE	CH. NO.	DRAFTS	CHECKER	ENG. APP.

UNLESS OTHERWISE SPECIFIED:
 DIMENSIONS ARE IN INCHES
 TOLERANCES ON
 FRACTIONS ± 1/64 DECIMALS ± .005 ANGLES ± 1/2°

SCALE
 MAXIMUM ALLOWABLE TOLERANCES HAVE
 BEEN DETERMINED AND ANY DEVIATIONS
 WILL BE CAUSE FOR REJECTION.
 REMOVE ALL BURRS & SHARP EDGES

TMC FORM NO. 110

7

6

5