

**Note:**

Arrows indicate direction components on Circuit Boards face:

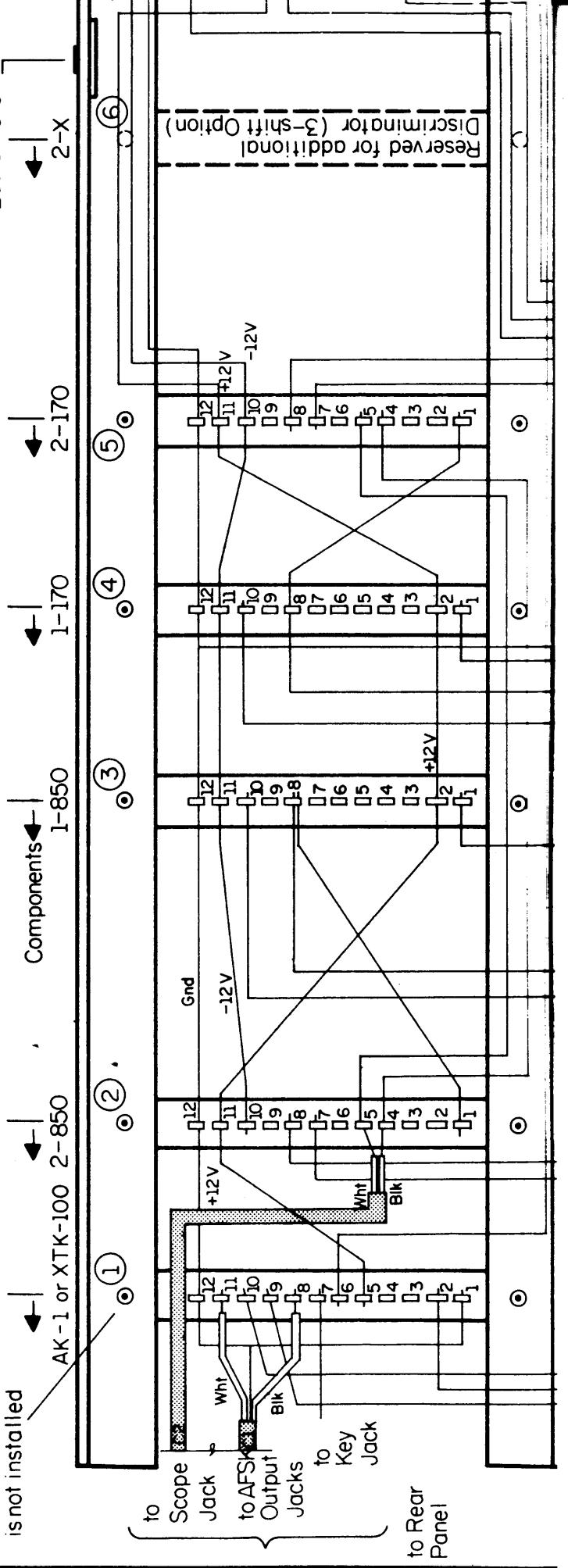
Numbered edge connection - components face left

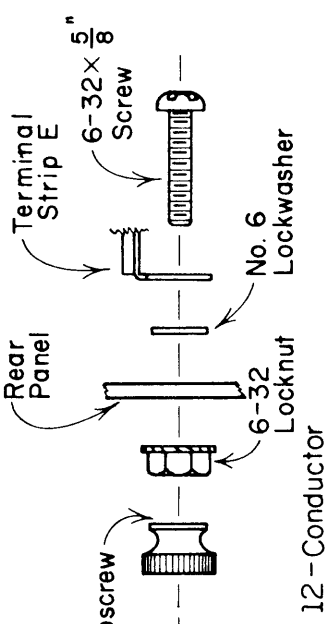
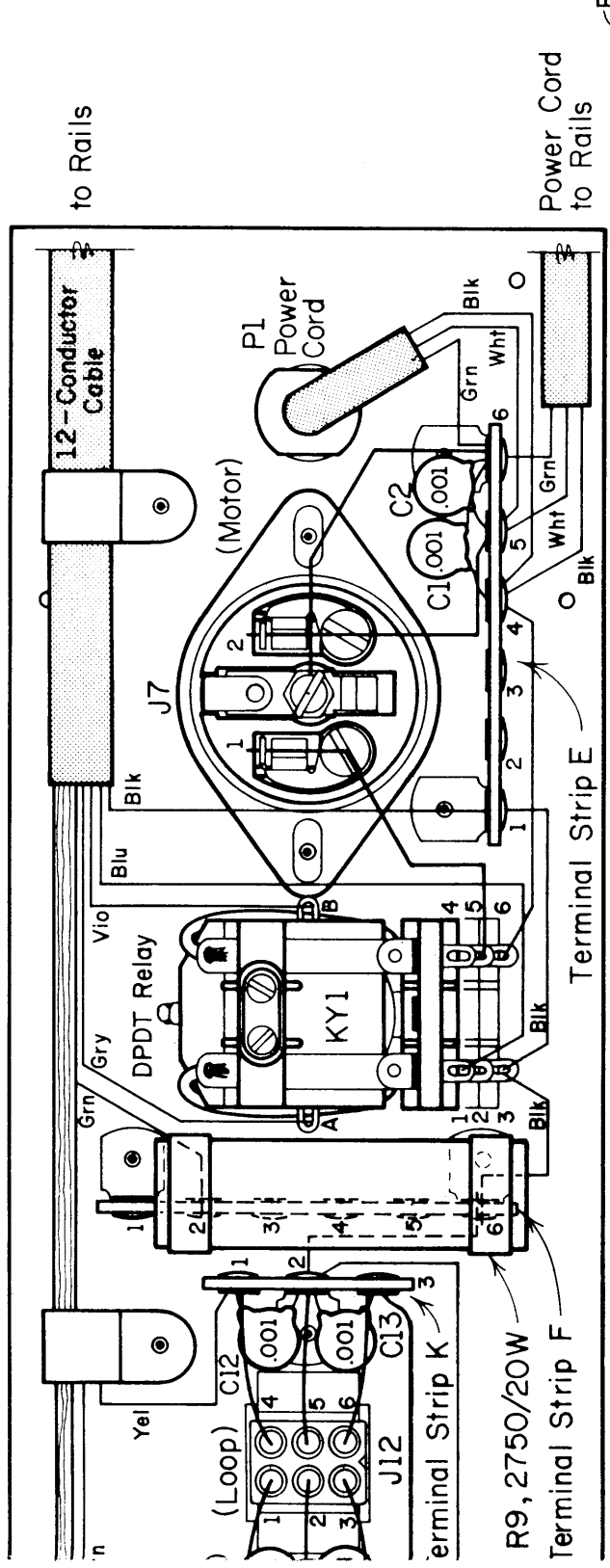
Lettered edge connection - components face right

Delete this connector and associated wires if AK-1 or XTK-100 is not installed

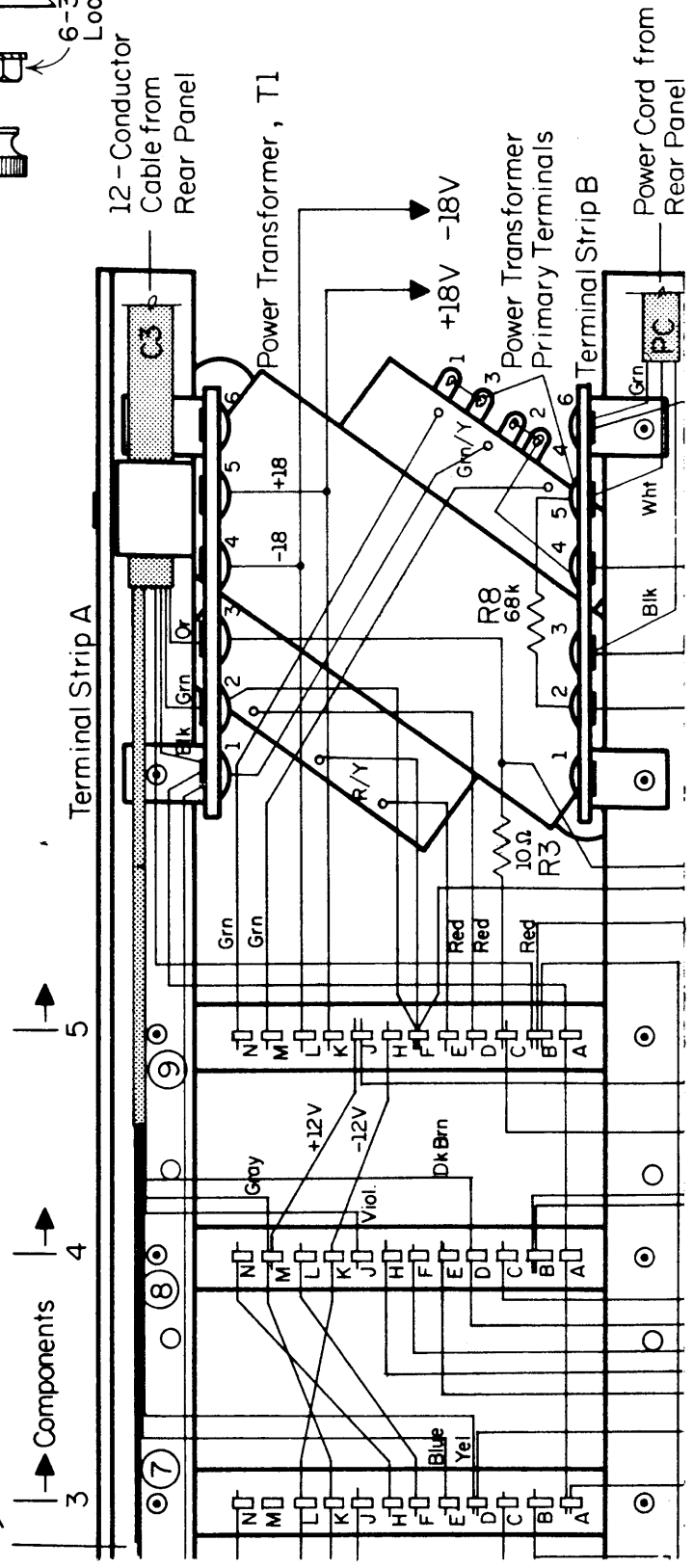
Rear Panel (as Viewed from inside)

Mount M/L Board here



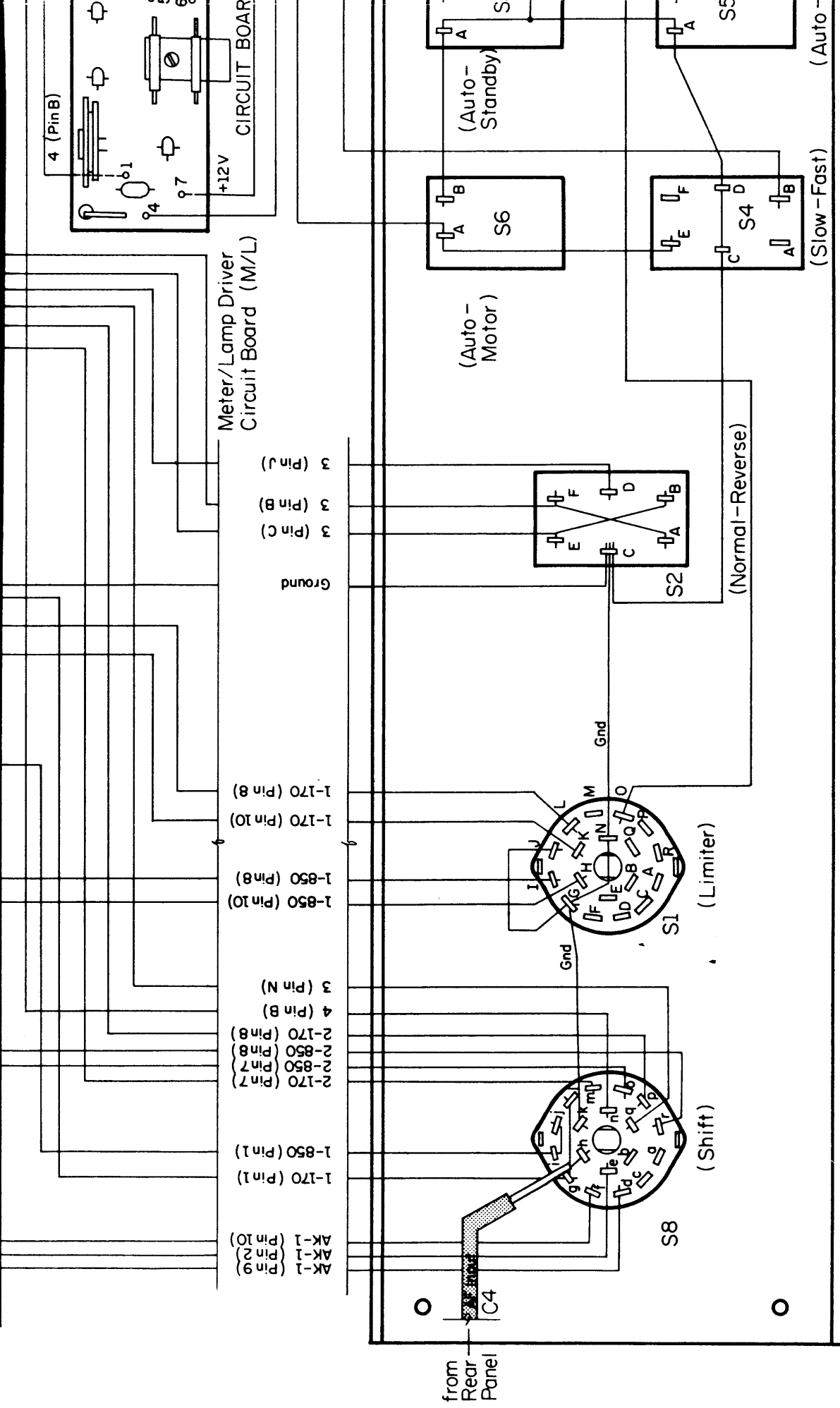


Ground Connection Detail for Terminal Strip E

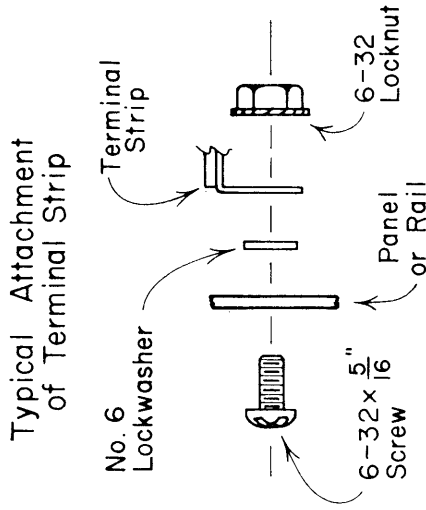


not used

3  
4  
5  
6  
7  
8  
9



Front Panel (as Viewed from Inside)

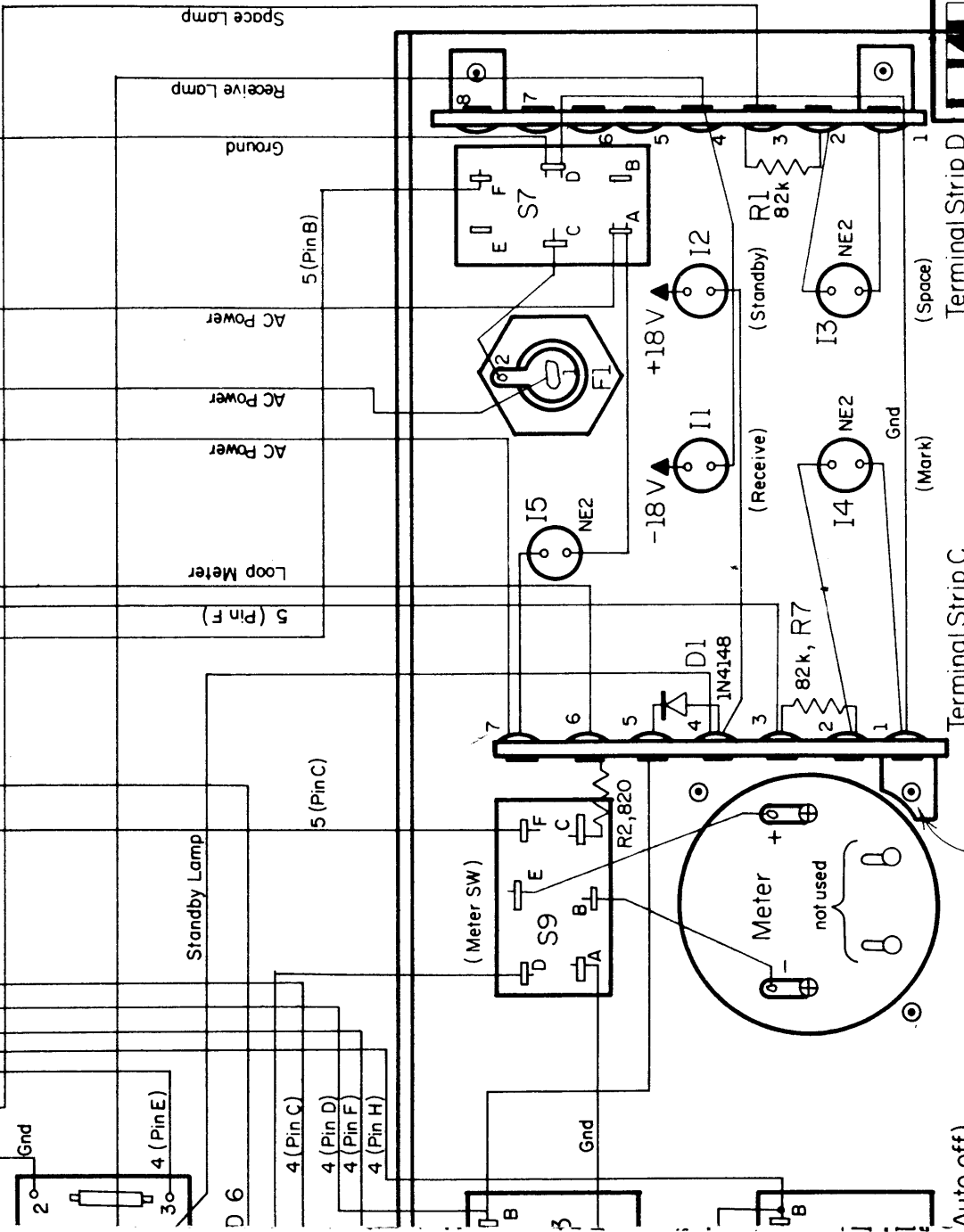


**COMMUNICATIONS CORP.**  
 BOX 365, URBANA ILLINOIS, 61801

ST-6 Wiring Diagram

DATE August 8, 1972 SCALE \_\_\_\_\_

APPROVED G. W. H. No. B915B



Use 4-40 x 1/2" Flathead Screw

Rev. A: Dec. 26, 1974  
 Rev. B: Jul. 21, 1975