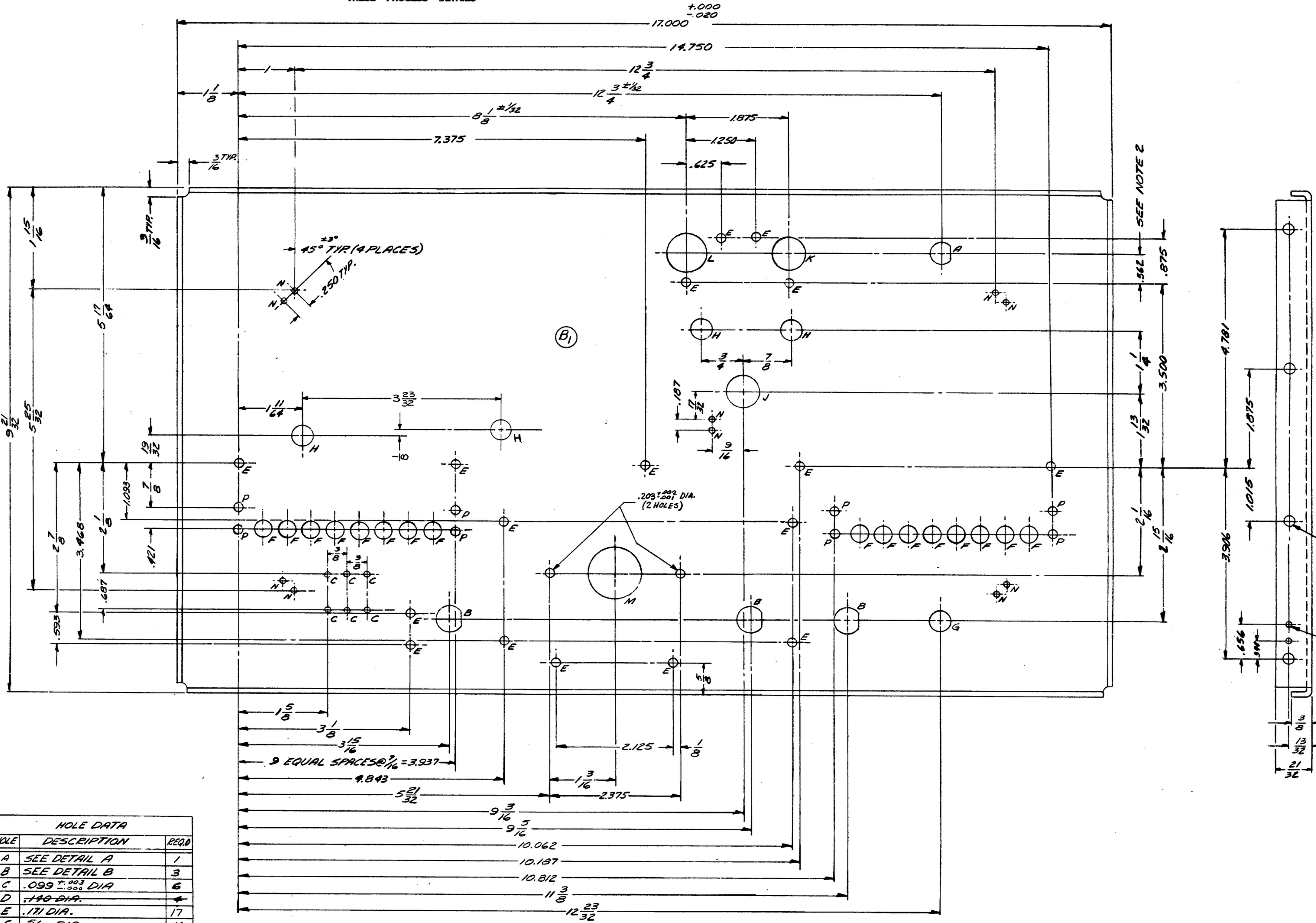


UNLESS OTHERWISE SPECIFIED, DIMENSIONS ARE IN INCHES AND DECIMALS THEREOF. DIMENSIONS ARE TO BE TAKEN TO THE CENTER OF HOLES UNLESS OTHERWISE SPECIFIED. DIMENSIONS ARE TO BE TAKEN TO THE CENTER OF HOLES UNLESS OTHERWISE SPECIFIED. DIMENSIONS ARE TO BE TAKEN TO THE CENTER OF HOLES UNLESS OTHERWISE SPECIFIED.

THIS DRAWING HAS BEEN PREPARED BY THE CONTRACTOR AND MAY BE REPRODUCED AND USED IN CONNECTION WITH ANY OTHER PROJECTS WITHOUT THE WRITTEN PERMISSION OF THE CONTRACTOR.

NOTE: *FOR INFORMATION ONLY. CONTRACTOR MAY AT HIS OPTION DEVIATE FROM THESE PROCESS DETAILS

REVISIONS			
SYM	DESCRIPTION	DATE	APPROVAL
A ₁	(1) "E" HOLES WERE 25 REQD, "P" HOLES ADDED	9 JUL 1964	ED JM
B ₂	(1) REMOVED 4 "D" HOLES & DIMS; (2) SEE SHEET 2	25 MAR 1965	21582-PC-611 REVD PNE



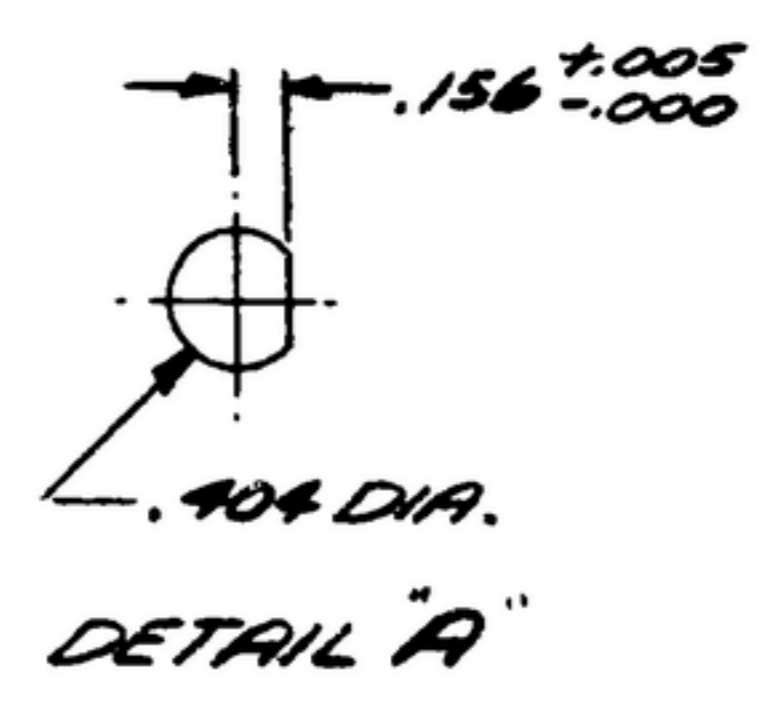
- NOTES:
- MATERIAL: ALUM ALLOY 5052 TEMPER H34, PER SPEC. QQ-A-318, .031 THICK.
 - FINISH: ES13 PER SPEC. MIL-F-14072.
 - ALL INSIDE BEND RADII $\frac{3}{16}$ MAX., CORNER RELIEF RADII $\frac{1}{8}$.
 - TOLERANCE APPLIES TO "K" & "L" HOLES ONLY. "A" HOLE MAY VARY $\pm \frac{1}{32}$.
 - SILK SCREEN CHARACTER'S MARKED WITH A SYMBOL OF THIS TYPE (H), $\frac{1}{16}$ HIGH, ALL OTHERS TO BE $\frac{3}{16}$ HIGH, GOTHIC TYPE PER SPEC. MIL-M-1223, GER. II, 32. COLOR TO BE BLACK OR RED (WHERE INDICATED) COLOR CHIP # 27039 OR # 21126 PER FED. STD. 595. MARKINGS TO BE CENTRALLY LOCATED $\pm \frac{1}{32}$, UNLESS OTHERWISE SHOWN. COVER DESIGNATIONS WITH ONE COAT OF VARNISH PER SPEC. MIL-V-173, TYPE II.

.203 \pm .001 DIA. (8 HOLES) + EACH END

.099 \pm .005 DIA. C'SINK 100° .235 O.D. (4 HOLES) 2 EACH END.

(A)

HOLE	DESCRIPTION	REQD
A	SEE DETAIL A	1
B	SEE DETAIL B	3
C	.099 \pm .003 DIA	6
D	.140 DIA.	4
E	.171 DIA.	17
F	$\frac{5}{16}$ DIA.	16
G	.359 DIA.	1
H	$\frac{3}{8}$ DIA	4
J	.625 DIA.	1
K	.650 DIA.	1
L	.781 DIA.	1
M	1 DIA.	1
N	.109 DIA.	10
P	.215 DIA	8



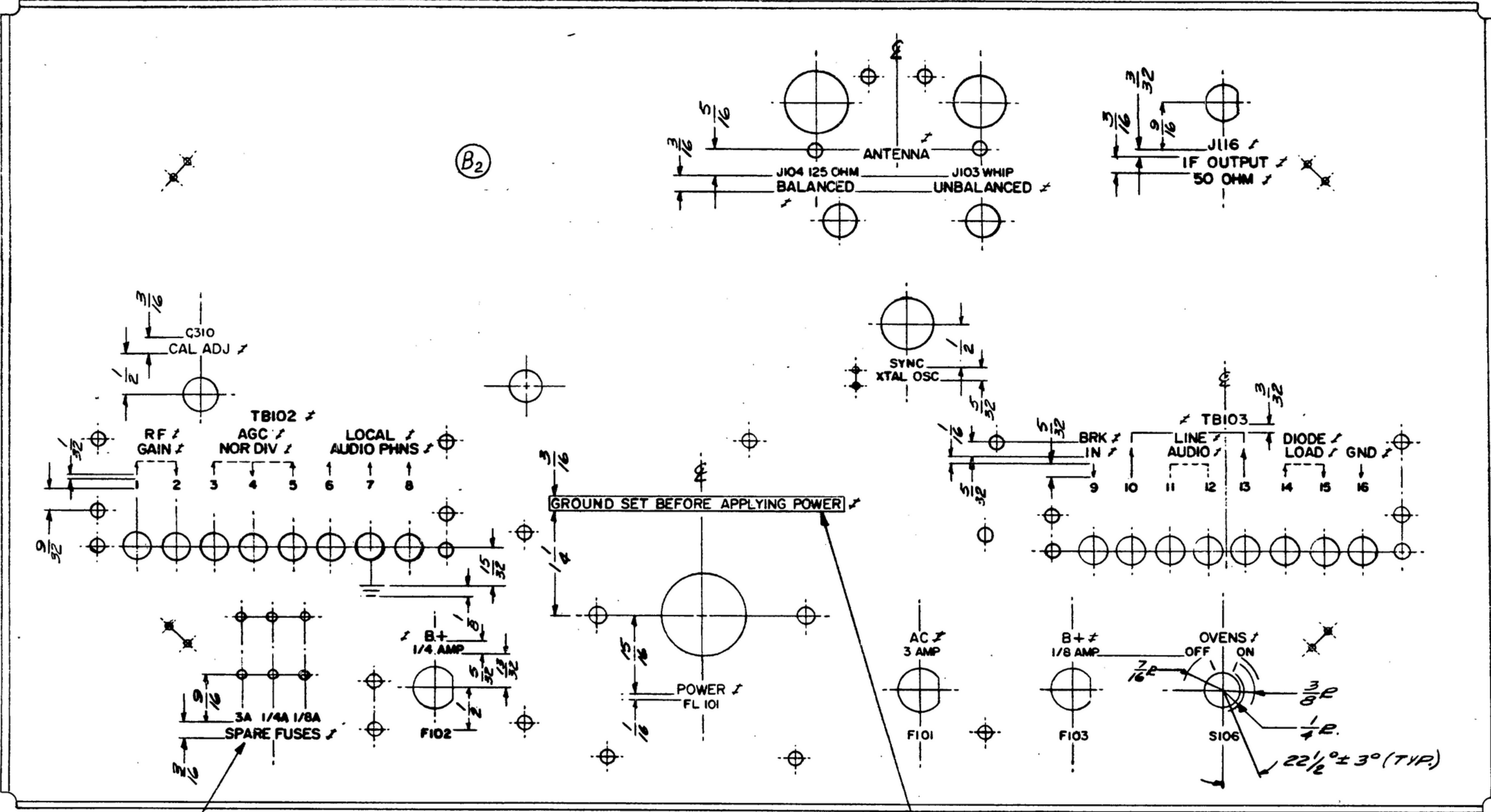
REQD	PART NO.	DESCRIPTION	MATL.	MATL. SPEC.	NOTES
LIST OF MATERIAL					
		STEWART-WARNER ELECTRONICS-42425-PC-59	DEPARTMENT OF THE ARMY SIGNAL CORPS ENGINEERING LABORATORIES FORT MONMOUTH NEW JERSEY SM-D-343624 SHEET 1 OF 3		
		SIGNAL CORPS			
		REVIEWED PME			
		DRAWN BY <i>[Signature]</i>	PANEL-REAR		
		CHECKED BY <i>[Signature]</i>			
		CHIEF DRAFTS <i>[Signature]</i>	APPROVED PME DATE 26 OCT 59 SCALE 1/1		
		ENG APPROVAL <i>[Signature]</i>			
		APPLICATION			

REVISIONS			
SYM	DESCRIPTION	DATE	APPROVAL
A1		9 JUL 1964	ED JME.D.R.
B2	(1) SEE SHEET 1; (2) DELETED SCREW DRIVER & SOCKET WRENCH	25 MAR 1965	21582-PC-61 REV: PME

UNLESS OTHERWISE SPECIFIED, DIMENSIONS ARE IN INCHES. DIMENSIONS ARE TO BE TAKEN TO CENTER UNLESS OTHERWISE SPECIFIED. DIMENSIONS TO CENTER UNLESS OTHERWISE SPECIFIED. DIMENSIONS TO CENTER UNLESS OTHERWISE SPECIFIED.

THIS DRAWING IS THE PROPERTY OF THE GOVERNMENT AND MAY BE REPRODUCED AND USED IN CONNECTION WITH ANY GOVERNMENT PROCUREMENT OR CONTRACT OPERATIONS.

NOTE: *FOR INFORMATION ONLY. CONTRACTOR MAY AT HIS OPTION DEVIATE FROM THESE PROCESS DETAILS



SEE NOTE 5

SILK SCREEN TO BE RED (SEE NOTE 5)

REQD	PART NO.	DESCRIPTION	MATL	MATL SPEC	NOTES
LIST OF MATERIAL					

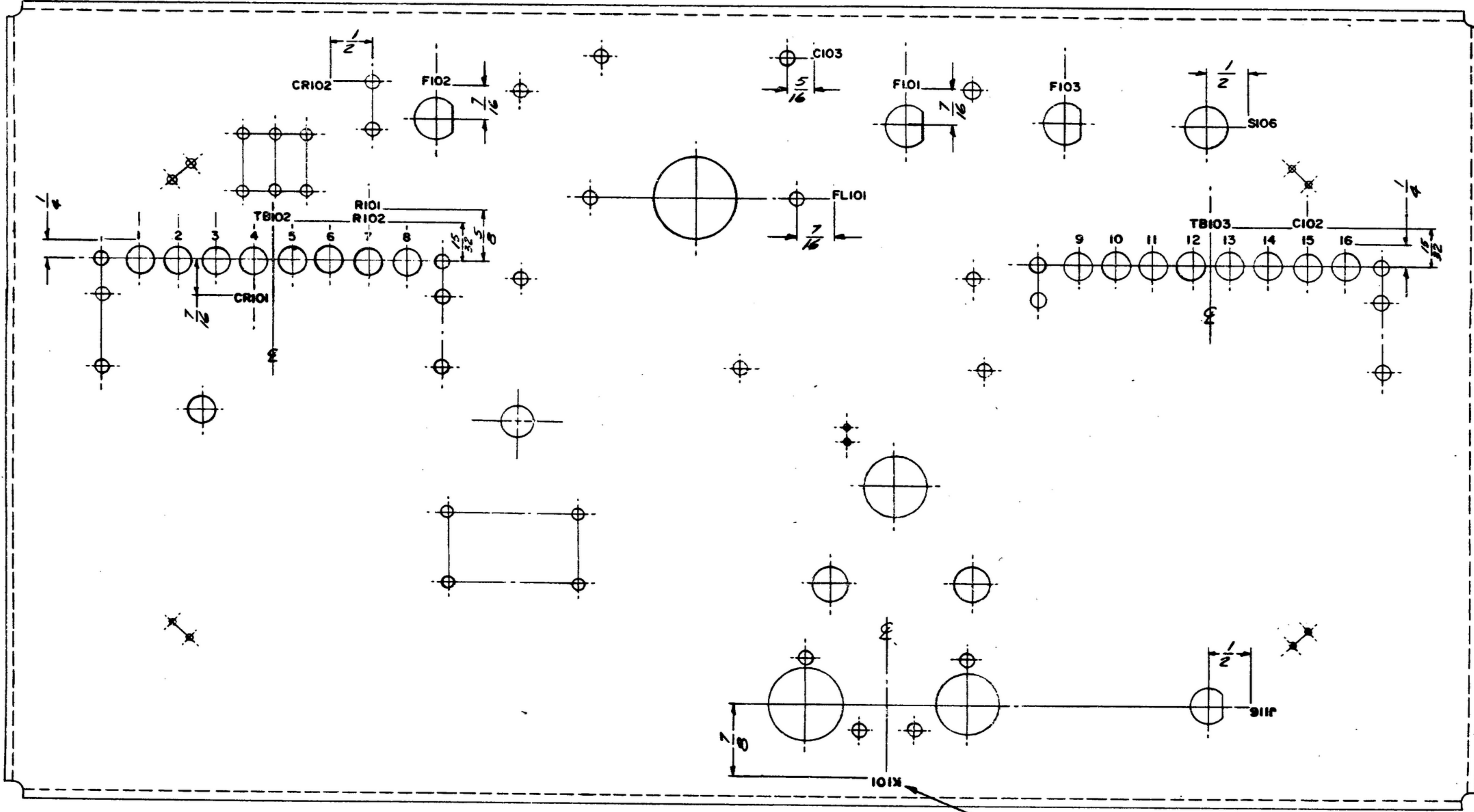
UNLESS OTHERWISE SPECIFIED DIMENSIONS ARE IN INCHES TOLERANCES ON FRACTIONS DECIMALS ANGLES ± 1/64 ± .005 ± 1°		STEWART-WARNER ELECTRONICS 42425-PC-59 SIGNAL CORPS		DEPARTMENT OF THE ARMY SIGNAL CORPS ENGINEERING LABORATORIES FORT MONMOUTH NEW JERSEY SM-D-343624 SHEET 2	
DRAWN BY <i>[Signature]</i>		REVIEWED <i>PME</i>			
CHECKED BY <i>[Signature]</i>		APPROVED <i>PME</i>			
CHIEF DRAFTS <i>[Signature]</i>		DATE 26 OCT 59 SCALE 1/1			
APPLICATION		ENG APPROVAL <i>[Signature]</i>			

UNLESS OTHERWISE SPECIFIED, DIMENSIONS ARE IN INCHES. DIMENSIONS ARE TO BE TAKEN TO THE CENTER OF THE HOLE UNLESS OTHERWISE SPECIFIED. DIMENSIONS ARE TO BE TAKEN TO THE CENTER OF THE HOLE UNLESS OTHERWISE SPECIFIED. DIMENSIONS ARE TO BE TAKEN TO THE CENTER OF THE HOLE UNLESS OTHERWISE SPECIFIED.

THIS DRAWING HAS BEEN PREPARED BY THE GOVERNMENT AND IS NOT TO BE REPRODUCED OR USED IN CONNECTION WITH ANY OTHER DRAWING OR SPECIFICATION WITHOUT THE WRITTEN PERMISSION OF THE GOVERNMENT.

NOTE: *FOR INFORMATION ONLY. CONTRACTOR MAY AT HIS OPTION DEVIATE FROM THESE PROCESS DETAILS

REVISIONS			
SYN	DESCRIPTION	DATE	APPROVAL
A ₁	SEE SHEETS 1 & 2 FOR REV	25 MAR 1963	JM-EDB PME
		9 JUL 1964	ED
		25 MAR 1963	21582-PC-61 REV D



SEE NOTE 5

REQD	PART NO.	DESCRIPTION	MATL	MATL SPEC	NOTES
LIST OF MATERIAL					

UNLESS OTHERWISE SPECIFIED		STEWART-WARNER	
DIMENSIONS ARE IN INCHES		ELECTRONICS	
TOLERANCES ON		42420-PC-50	
FRACTIONS	DECIMALS	SIGNAL CORPS	
± 1/64	±	REVIEWED PME	
DRAWN BY R. J. [Signature]		APPROVED	
CHECKED BY C. [Signature]		PME	
CHIEF DRAFTS C. [Signature]		DATE 26 OCT 59	
ENG APPROVAL [Signature]		SCALE 1/1	

PANEL-EEAP

DEPARTMENT OF THE ARMY
SIGNAL CORPS ENGINEERING
LABORATORIES

PORT MONMOUTH NEW JERSEY

SM-D-343624
SHEET 3