

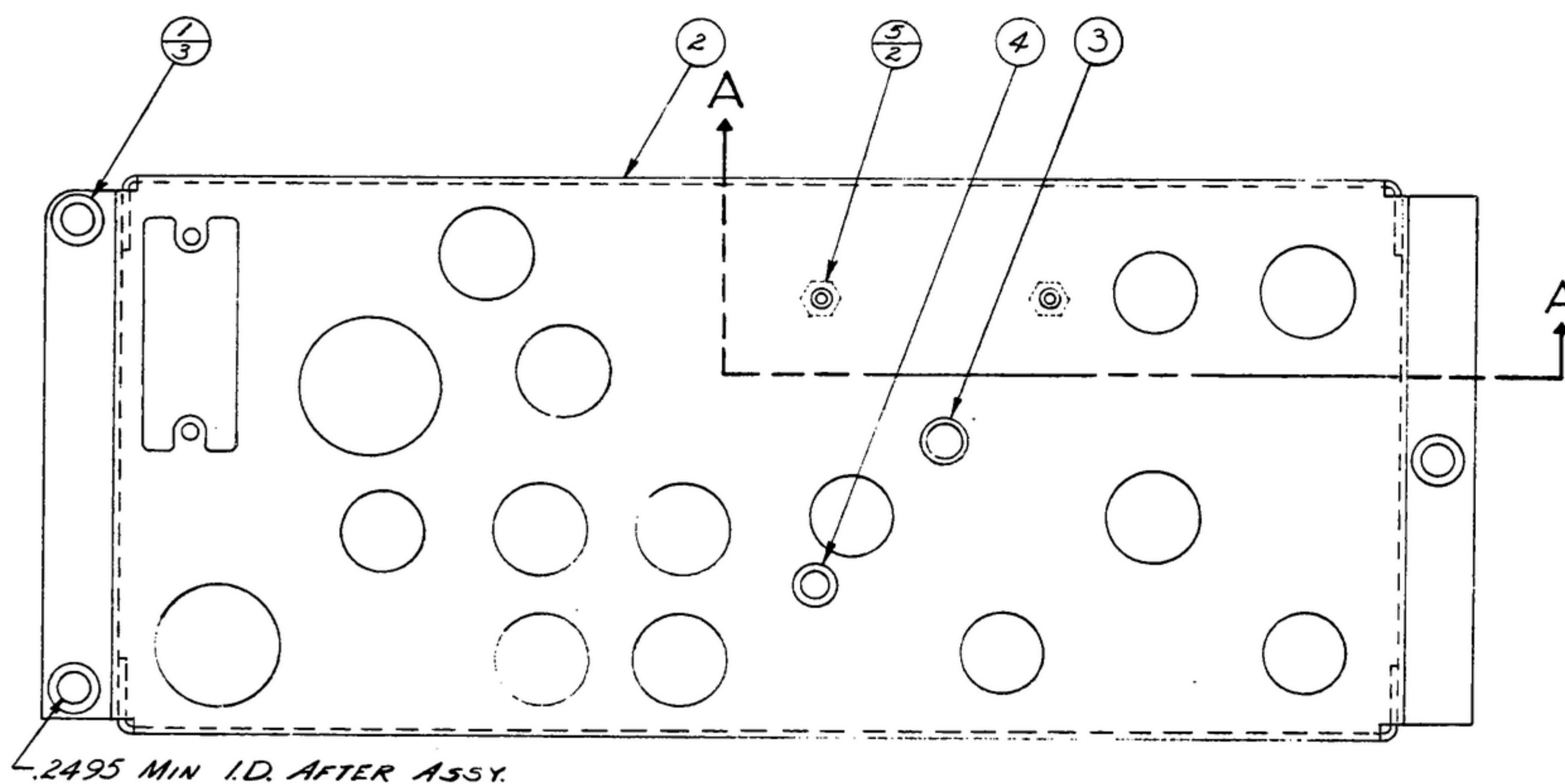
UNLESS OTHERWISE SPECIFIED, DIMENSIONS ARE IN INCHES. DIMENSIONS ARE TO BE TAKEN FROM THE UNFINISHED SURFACE UNLESS OTHERWISE SPECIFIED. DIMENSIONS ARE TO BE TAKEN FROM THE UNFINISHED SURFACE UNLESS OTHERWISE SPECIFIED. DIMENSIONS ARE TO BE TAKEN FROM THE UNFINISHED SURFACE UNLESS OTHERWISE SPECIFIED.

"THIS DOCUMENT HAS BEEN PREPARED BY THE GOVERNMENT AND MAY BE REPRODUCED AND USED IN CONNECTION WITH ANY GOVERNMENT PROGRAM OR MAINTENANCE OPERATION."

NOTE: *FOR INFORMATION ONLY, CONTRACTOR MAY AT HIS OPTION DEVIATE FROM THESE PROCESS DETAILS

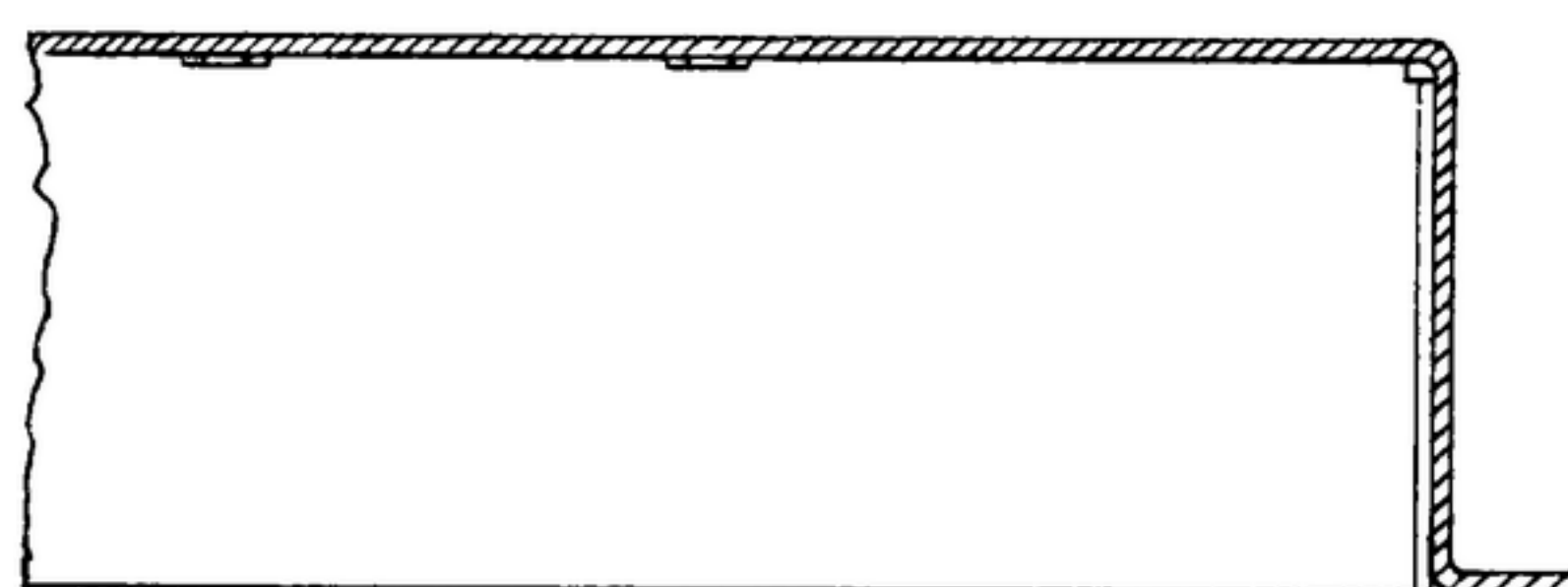
REVISIONS

SYM	DESCRIPTION	DATE	APPROVAL
-----	-------------	------	----------



NOTES:

1. PRESS CAPTIVE BUSHINGS (1) INTO CHASSIS (2) FROM SIDE SHOWN.
2. INSERT EYELETS (3 & 4) FROM SIDE SHOWN, AND SPIN OR ROLL ON OPPOSITE SIDE. EYELETS MUST SHOW NO FRACTURE AFTER FORMING.
3. IN ALL SPLIT BALLOONS, TOP FIGURE IS MATERIAL LIST ITEM INDICATOR, AND BOTTOM FIGURE IS QUANTITY.



SECTION A-A

*SWE. PART NO.	ITEM	REQD	PART NO.	DESCRIPTION	NATL	MATL SPEC
572827-20	5	2	SM-C-283166-B	NUT-INSERT CAPTIVE		
	4	1	SM-B-283151	EYELET		
	3	1	SM-B-283150	EYELET		
	2	1	SM-D-343635	CHASSIS-I.F.		
	1	3	SM-B-243875	BUSHING-CAPTIVE		

LIST OF MATERIAL

UNLESS OTHERWISE SPECIFIED: DIMENSIONS ARE IN INCHES TOLERANCES ON FRACTIONS DECIMALS ANGLES		SIGNAL CORPS REVIEWED <i>PMZ</i> APPROVED <i>PMZ</i> DATE 19 OCT. 59		DEPARTMENT OF THE ARMY SIGNAL CORPS ENGINEERING LABORATORIES FORT MONMOUTH NEW JERSEY
SM-D-343620	SC-DL-248775	Drawn By: <i>G. S. Goodson</i> Checked By: <i>G. S. Goodson</i> Chief Drafts: <i>G. S. Goodson</i> Eng. Approval: <i>G. S. Goodson</i>	CHASSIS ASSY-I.F.	
NEXT ASSY	USED ON	APPLICATION	SCALE 1/1	SM-C-343636