

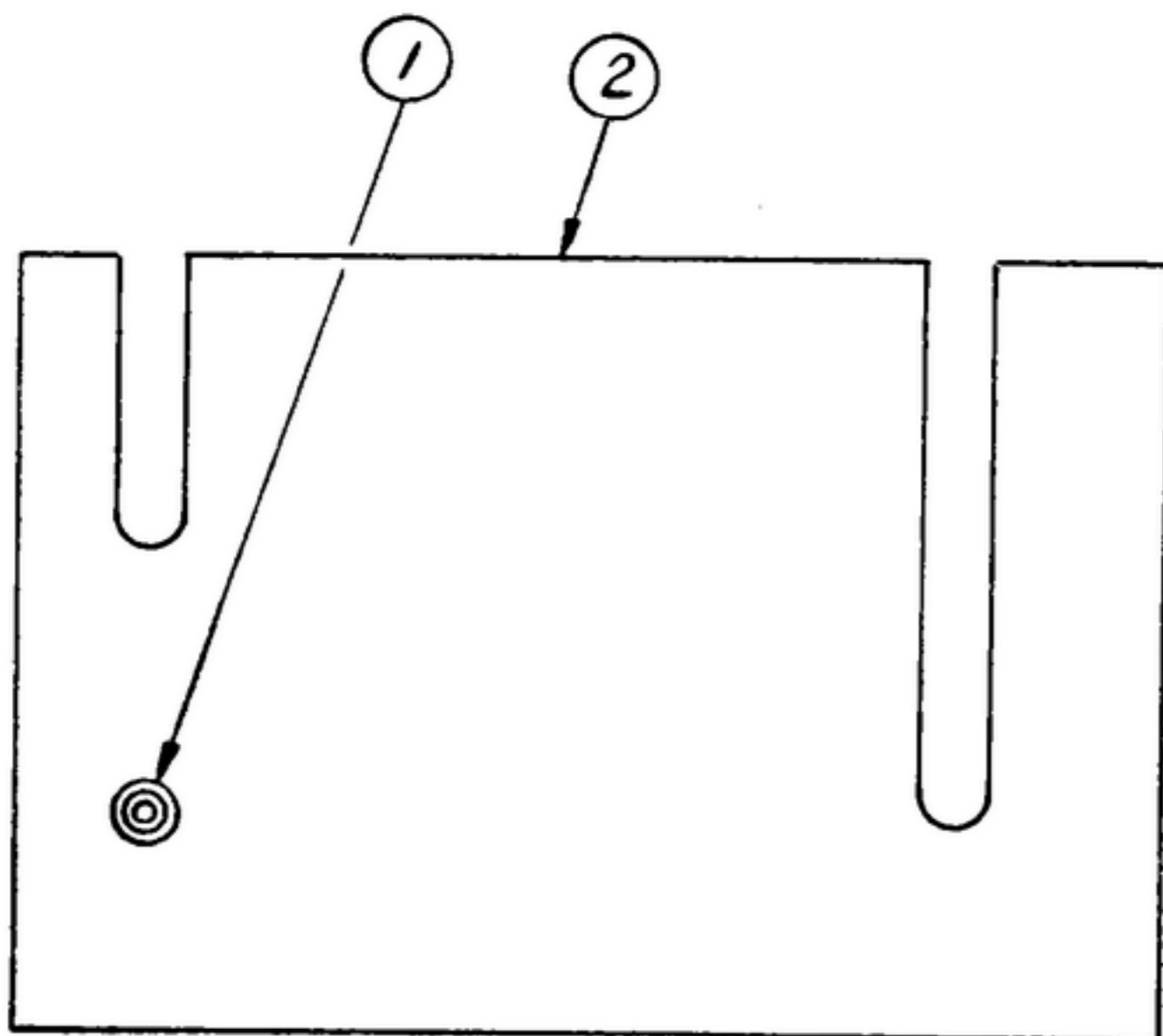
NOTICE: UNLESS GOVERNMENT DRAWINGS, SPECIFICATIONS, OR OTHER DATA ARE USED FOR ANY PURPOSE OTHER THAN IN CONNECTION WITH A SPECIFICALLY RELATED GOVERNMENT PROCUREMENT OPERATION, THE UNITED STATES GOVERNMENT TAKES NO RESPONSIBILITY FOR ANY OBLIGATION WHATSOEVER AND THE FACT THAT THE GOVERNMENT HAS PROVIDED INFORMATION, OR IN ANY WAY SUPPLIED THE DATA, DRAWINGS, SPECIFICATIONS, OR OTHER DATA IS NOT TO BE REGARDED AS IMPLICATION OR OTHERWISE AS IN ANY MANNER LICENSING THE HOLDER OR ANY OTHER PERSON OR CORPORATION, OR CONFERRING ANY RIGHTS OR PERMISSION TO MANUFACTURE, USE, OR SELL ANY PATENTED INVENTION THAT MAY IN ANY WAY BE RELATED HERETO.

"THIS DOCUMENT HAS BEEN PURCHASED BY THE GOVERNMENT AND MAY BE REPRODUCED AND USED IN CONNECTION WITH ANY GOVERNMENT PROCUREMENT OR MAINTENANCE OPERATION."

NOTE:

*FOR INFORMATION ONLY, CONTRACTOR MAY AT HIS OPTION DEVIATE FROM THESE PROCESS DETAILS

REVISIONS			
SYM	DESCRIPTION	DATE	APPROVAL



NOTES:

1. PRESS PIN(1) INTO PLATE(2), & CROSS STAKE
2. PLATE TO BE FLAT WITHIN .020 TIR., AFTER ASSEMBLY
3. SLOTS MUST BE .265 $\pm .002$ AFTER ASSEMBLY

*SWE PART NO	ITEM	REQD	PART NO.	DESCRIPTION	MATL	MATL SPEC	NOTES
	2	1	SM-C-343593	PLATE-AUX CAM.			
	1	1	SM-B-343592	SHAFT, ROLLER			

LIST OF MATERIAL

UNLESS OTHERWISE SPECIFIED DIMENSIONS ARE IN INCHES TOLERANCES ON FRACTIONS DECIMALS ANGLES ± ± ±				STEWART-WARNER -ELECTRONICS-		PLATE ASSY CAM	DEPARTMENT OF THE ARMY SIGNAL CORPS ENGINEERING LABORATORIES FORT MONMOUTH NEW JERSEY
				42428-PC-59-A1-51			
DRAWN BY <i>U. Scardina</i>		REVIEWED <i>PME</i>					
CHECKED BY <i>[Signature]</i>		APPROVED <i>PME</i>					
NEXT ASSY	USED ON	NEXT ASSY	USED ON	CHIEF DRAFTS <i>[Signature]</i>	DATE <i>5 OCT 59</i>	SCALE <i>1/1</i>	SM-B-343594
SWE APPLICATION		APPLICATION		ENG APPROVAL <i>[Signature]</i>			