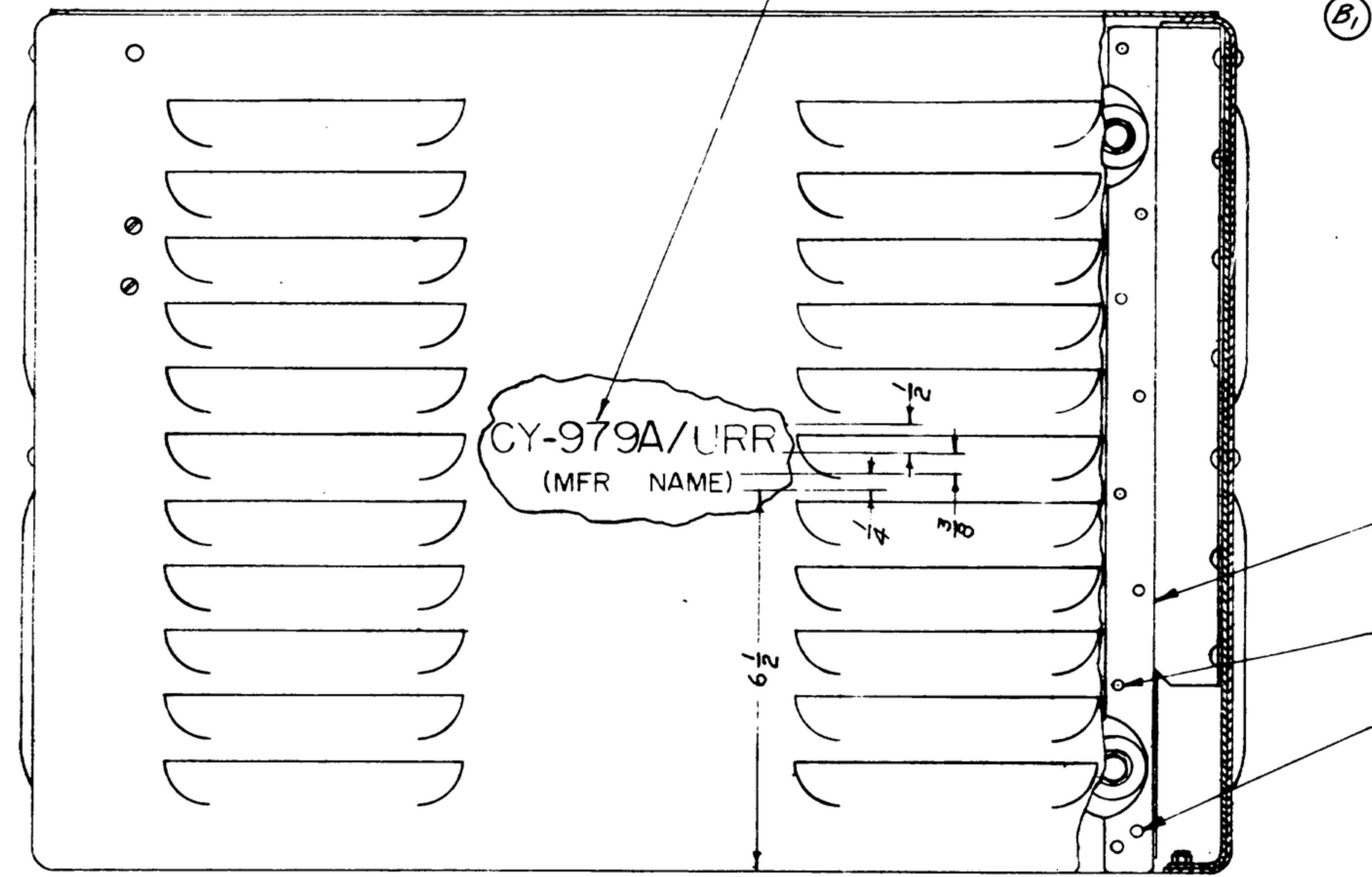


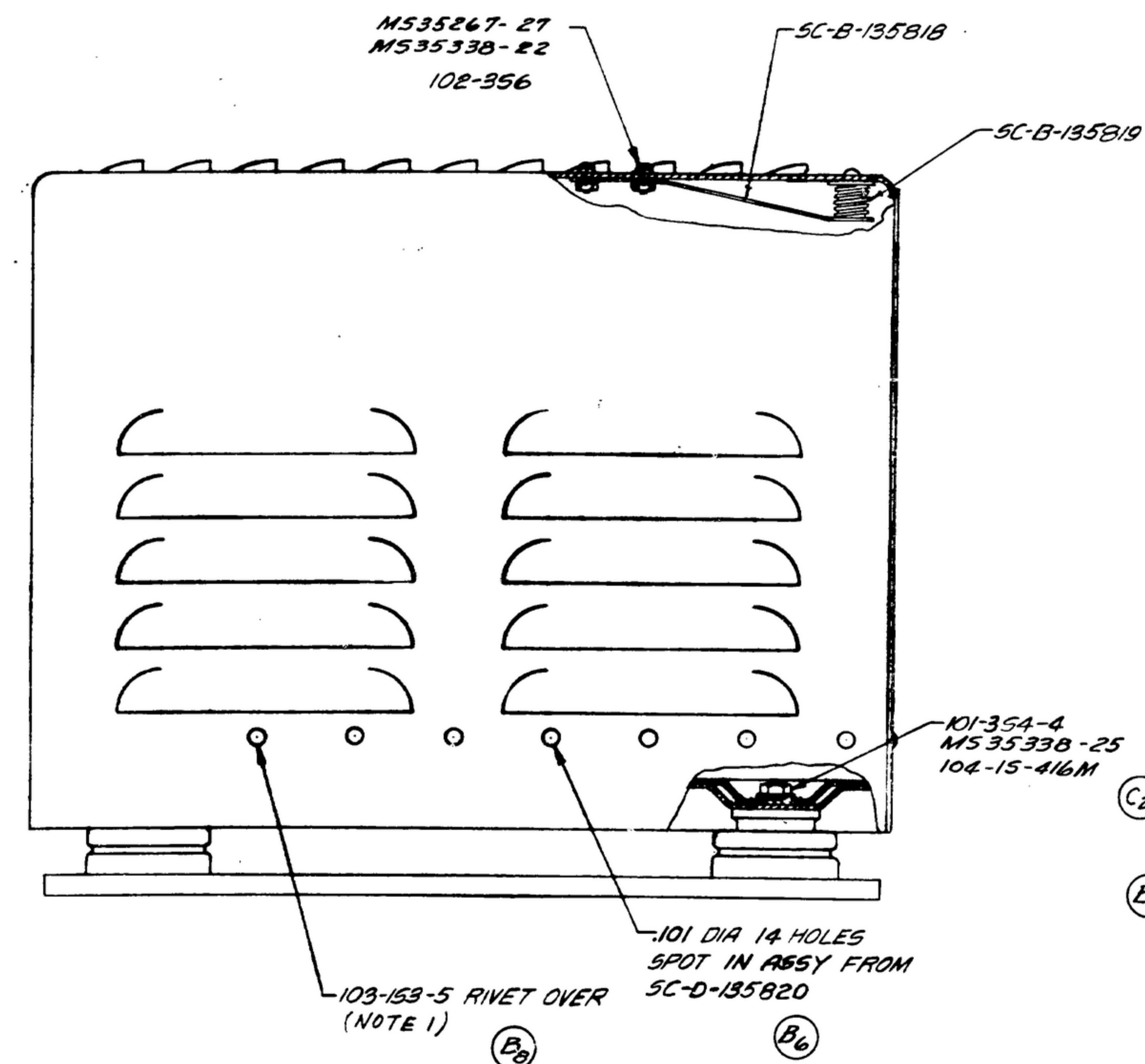
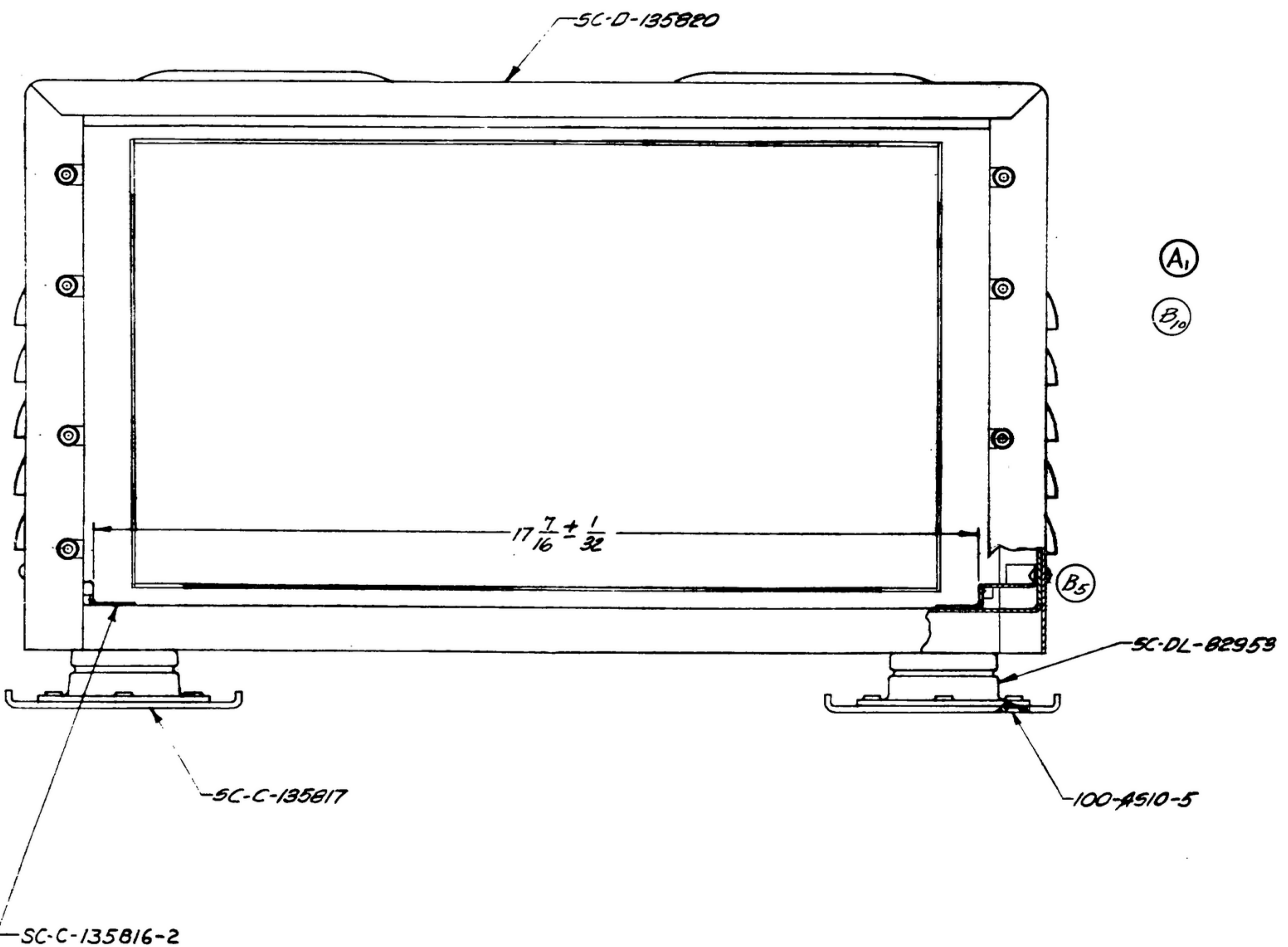
NOTICE: WHEN GOVERNMENT DRAWINGS, SPECIFICATIONS OR OTHER DATA ARE USED FOR ANY PURPOSE OTHER THAN IN CONNECTION WITH A SPECIFIC GOVERNMENT PROCUREMENT OPERATION, THE UNITED STATES GOVERNMENT THEREBY INCURS NO RESPONSIBILITY FOR ANY INADEQUACIES, ERRORS AND THE FACT THAT THE GOVERNMENT MAY HAVE FORWARDED, PUBLISHED, OR IN ANY WAY SUPPLIED THE SAID DRAWINGS, SPECIFICATIONS OR OTHER DATA IS NOT TO BE REGARDED BY IMPLICATION OR OTHERWISE AS AN AUTHORITY LICENSE TO THE HOLDER OR ANY OTHER PERSON OR CORPORATION, OR CONVEYING ANY RIGHTS OR PERMISSION TO MANUFACTURE, USE, OR SELL ANY PATENTED INVENTION THAT MAY IN ANY WAY BE RELATED HERETO.

STAMP OR STENCIL CHARACTERS AND MARKINGS WITH A PERMANENT BLACK CHARACTERS AND MARKINGS SHALL MEET THE APPLICABLE TEST REQUIREMENTS OF SPEC MIL-M-13231 ON INSIDE BOTTOM OF CASE.

REVISIONS			
SYM	DESCRIPTION	DATE	APPROVAL
A ₁	A DIM. ADDED; DRAWING CHANGED TO AGREE WITH REVISED DETAILS	16 MAR 54	JNS GHR RWR EB
B ₁₀	(1) SC STD DWG 104-2 & 100-5 SUPERSEDED BY MILITARY STD DWG (2) ADDED (3) SPEC REF REV (4) TITLE REVISED (5) BROKEN VIEW ADDED (6) WAS 16 HOLES (7) WAS 20 HOLES (8) WAS 103-153-6 (9) WAS 10°-253-6 (10) 9.782 DIM. DELETED.	3 DEC 57	EB RWR GHR JNS
C ₂	TITLE AND MARKINGS REVISED (1) NOTES 5 & 6 ADDED (2) MS35298-22 WAS 101-354-4, MS35649-62 WAS 102-356, 134638 WAS 103-153-5, 134997 WAS 103-253-5, MS15795-211 WAS 104-15-416M	10 FEB 64	R.B.P. JNS



- SC-C-135816-1
- .101 DIA 18 HOLES SPOT IN ASSY FROM SC-C-135816-1 & SC-C-135816-2
- 103-253-5 RIVET OVER UNDERSIDE (NOTE 1)



- NOTE:
- EXPOSED SURFACES OF SCREWS, RIVETS, NUTS ETC., SHALL BE FINISHED TO MATCH SURROUNDING SURFACES IN ACCORDANCE WITH SPEC MIL-F-14072
 - ABBREVIATIONS ARE PER MIL-STD-12.
 - SCREW THREADS ARE PER H2B SCREW THREAD STANDARDS FOR FEDERAL SERVICES.
 - ITEMS REFERENCED BY THIS NOTE SHALL BE FREE OF PAINT.
 - SHALL BE PER ORDINANCE ENGINEERING STANDARD BMCX1.1
 - SHALL BE PER ORDINANCE ENGINEERING STANDARD BMCX1.

QTY	PART NO.	DESCRIPTION	MATL	MATL SPEC	NOTE
4	MS35338-25	LOCKWASHER			
4	MS35338-22	LOCKWASHER			
4	MS15795-211	WASHER			
18	134-997	RIVET			5
16	134-638	RIVET			6
4	MS35649-62	HEX NUT			
4	MS35298-22	BOLT			
4	MS35267-27	SCREW			
16	MS35242-69	SCREW			
4	SC-DL-82953	MOUNT, VIBRATION MT-1173U			
1	SC-D-135820	WELDED ASSEMBLY			
2	SC-B-135819	SPRING			4
2	SC-B-135818	BRACKET			4
2	SC-C-135817	PLATE	STEEL		
1	SC-C-135816-2	RUNNER			
1	SC-C-135816-1	RUNNER			

UNLESS OTHERWISE SPECIFIED		AUTHENTICATION		DEPARTMENT OF THE ARMY SIGNAL CORPS ENGINEERING LABORATORIES FORT MONMOUTH NEW JERSEY
DIMENSIONS ARE IN INCHES		DRAWN MCZ		
TOLERANCES ON		TRACED PHOTO		
FRACTIONS DECIMALS ANGLES		CHECKED SANDHOLM		
± 1/64 ± .005		VERIFIED W.F.C.		
SC-DL-135816		APPROVED JNS		
NEXT ASSY	USED ON	REVIEWED M.H.		
APPLICATION		DATE 13 NOV 1953		

CABINET ELECTRICAL EQUIPMENT CY-979A/URR ASSEMBLY

SCALE 1/2 SC-D-135815