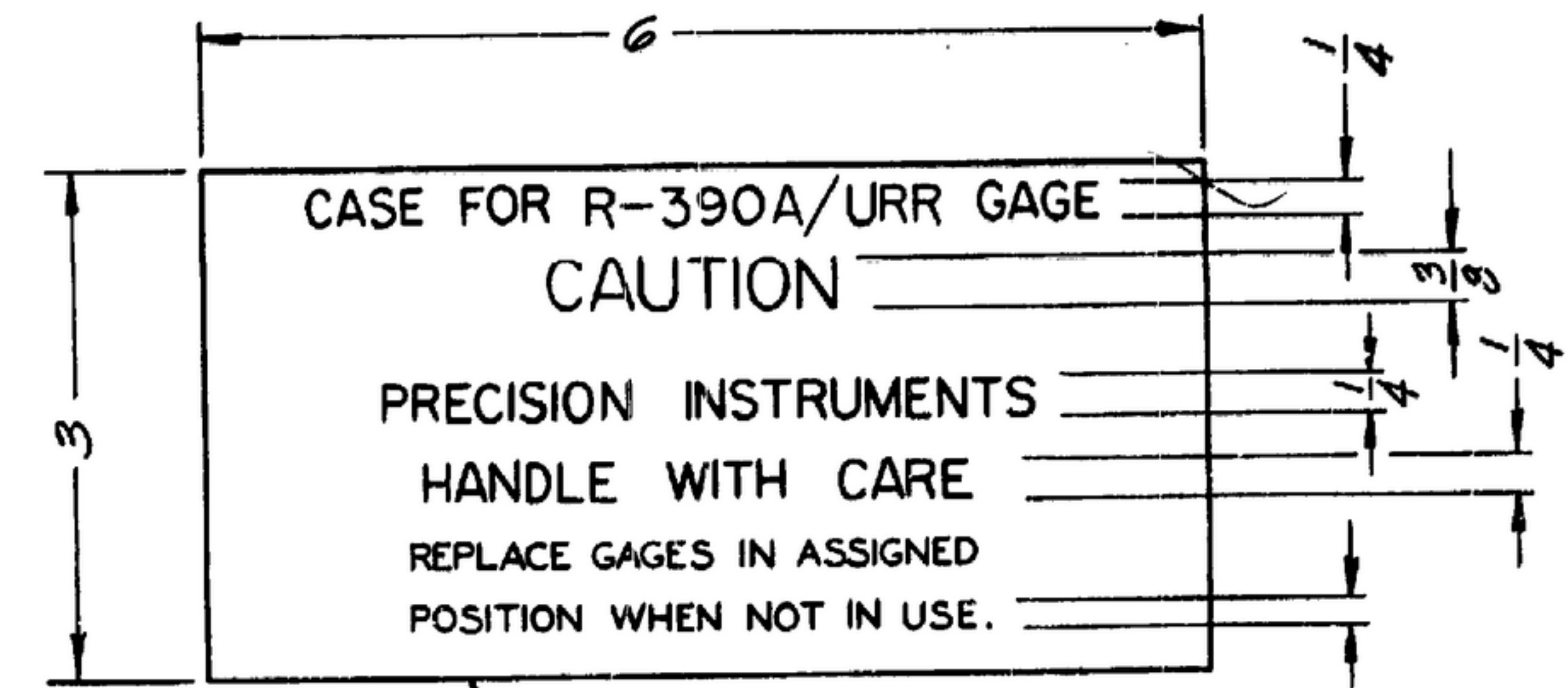
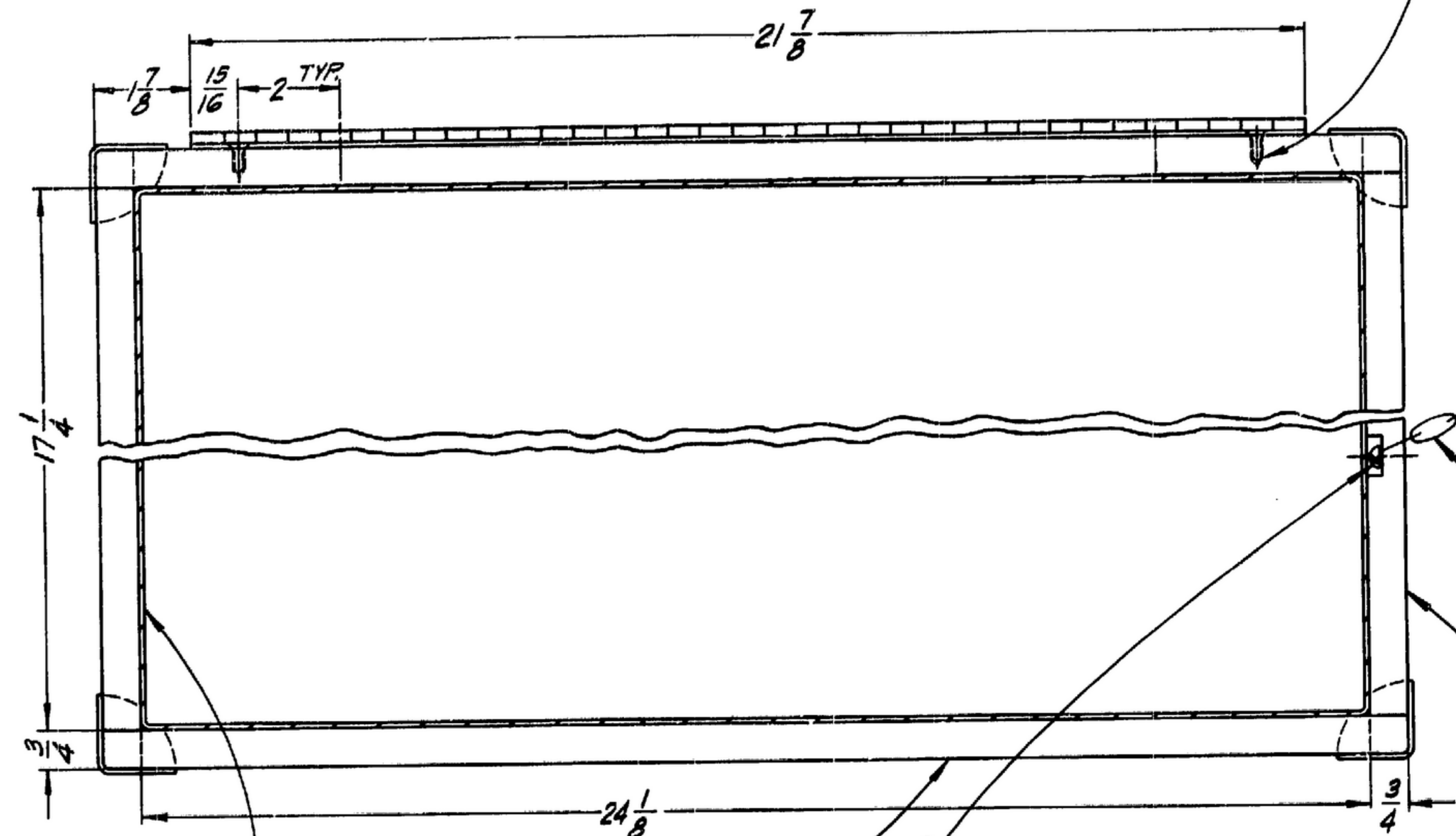


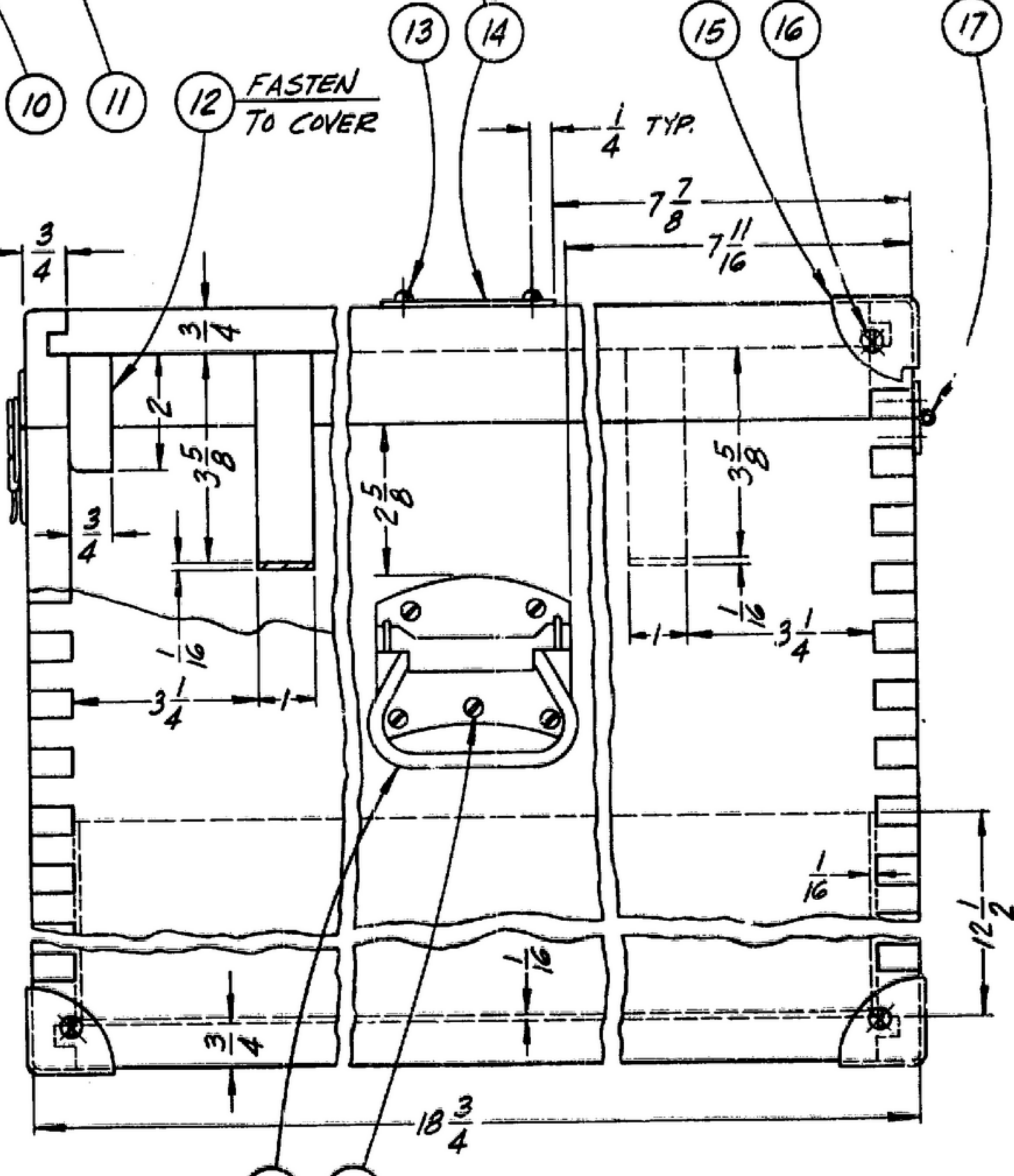
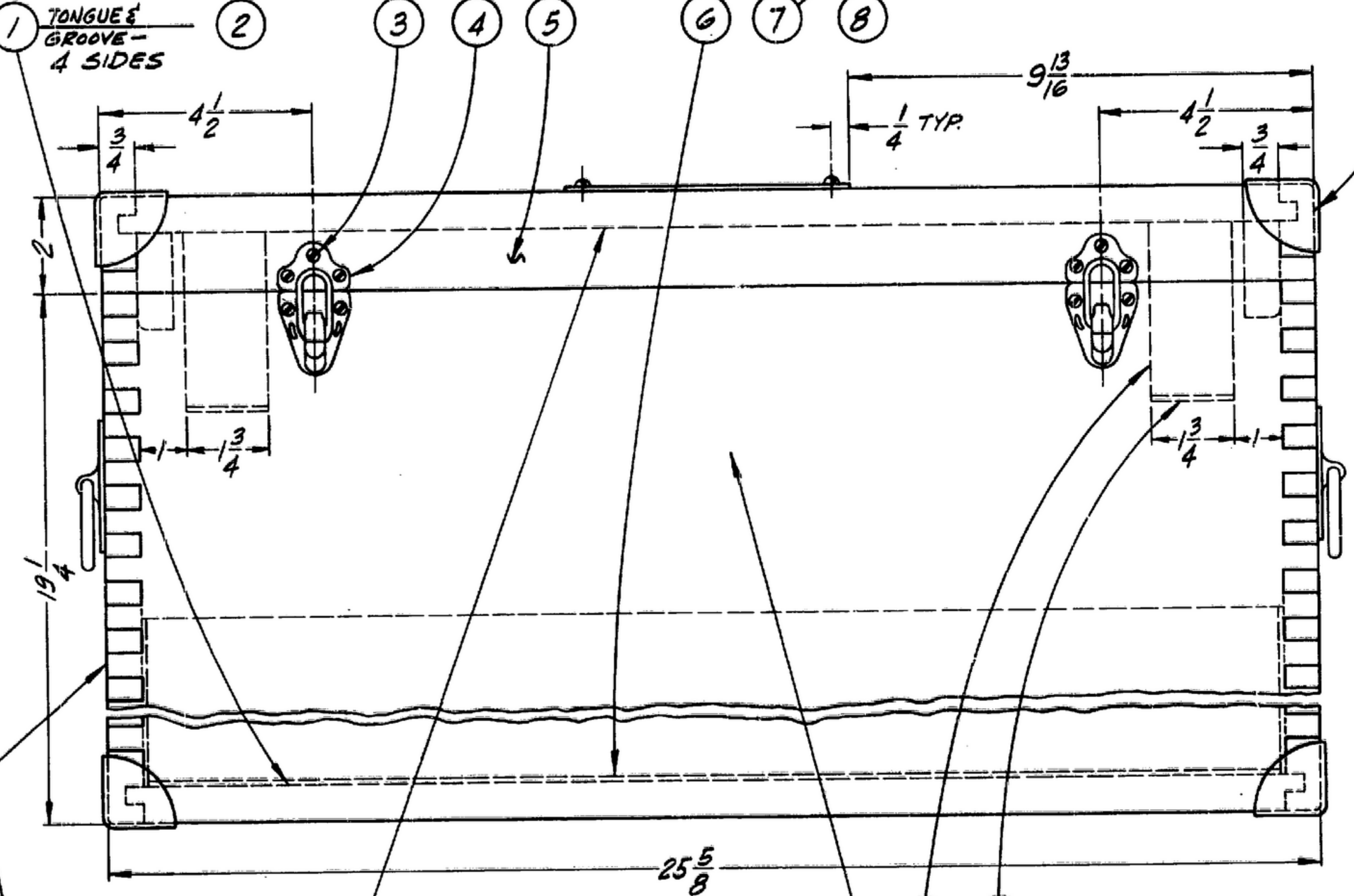
UNLESS OTHERWISE SPECIFIED, DIMENSIONS ARE IN INCHES. DIMENSIONS ON FRACTIONS - DECIMALS ANGLES ± 1/32 ± ° ±'

THIS DRAWING IS THE PROPERTY OF MOTOROLA INC. AND IS TO BE KEPT IN CONFIDENTIALITY. IT IS TO BE RETURNED TO THE OFFICE OF ORIGIN UPON REQUEST. IT IS NOT TO BE REPRODUCED OR TRANSMITTED IN ANY FORM OR BY ANY MEANS, ELECTRONIC OR MECHANICAL, INCLUDING PHOTOCOPYING, RECORDING, OR BY ANY INFORMATION STORAGE AND RETRIEVAL SYSTEM, WITHOUT PERMISSION IN WRITING FROM MOTOROLA INC.

NOTE: CHAIN AND ITS FASTENING TO BE RECESSED IN SIDES OF CASE & COVER AS SHOWN. CHAIN MUST CONFINE SWING OF COVER TO 120° MAX.



SCALE: 1=1  
SEE NOTE #5



- NOTES:
- HIGH DENSITY PLYWOOD PER SC-A-47794-3.
  - HARD WOOD, CLEAR, PER SC-A-47794-21.
  - ALL JOINTS SHALL BE SECURELY BONDED WITH ADHESIVE PER SPEC. MIL-A-397, TYPE I, CLASS 1, APPLIED PER SPEC. MIL-A-5433
  - BEFORE ASSEMBLY OF HARDWARE, PADDING, & NAMEPLATE, ALL INSIDE & OUTSIDE SURFACES OF CASE SHALL BE FINISHED AS FOLLOWS: SAND AND APPLY ONE COAT OF WOOD SEALER PER SPEC MIL-S-13518 AND ONE COAT OF CLEAR SPAR VARNISH PER SPEC TT-V-119.
  - ALUMINUM ALLOY 24S-T4 PER SPEC QQ-A-362. BLACK ANODIZE PER SPEC MIL-A-8625. ENGRAVE USING GOTHIC STYLE CHARACTERS AND FILL WITH WHITE PAINT.
  - EXCELSIOR HARDWARE CO. - CAT. NO. #491110 - BRIGHT NICKEL FINISH.
  - STANLEY HARDWARE CO. - CAT. NO. #1205, SIZE 3 1/4, BRIGHT NICKEL FINISH.
  - STANLEY HARDWARE CO. - CAT. NO. #311 - 1 1/4 WIDE - BRIGHT NICKEL FINISH.
  - J. H. SESSIONS & SON ARMED FORCES HARDWARE CAT. NO. S-966-4A-ZNS3 FINISH PER SPEC. 72-53 TABLE #2 TYPE I (ZINC COATING .0003 THICK).
  - FELT PER SPEC. C-F-206, SECURELY BONDED IN PLACE WITH Pliobond #30 AS MADE BY GOODYEAR TIRE & RUBBER CO. - AKRON OHIO. (OR APPROVED EQUIVALENT).
  - CASE AND MARKINGS ON THE CASE SHALL MEET THE REQUIREMENTS OF SPEC. MIL-G-13451.
  - AFTER FINISH IS APPLIED, FILL CHARACTERS WITH WHITE PAINT - THEN APPLY ONE COAT OF COLORLESS VARNISH TYPE II PER SPEC. MIL-V-173. CHARACTERS SHALL MEET THE TEST REQUIREMENTS OF SPEC. MIL-M-13231.
  - FINISHES ARE PER SPEC. MIL-F-14072.
  - ALL INSIDE DIMENSIONS ARE TO WOOD SURFACES.

BOX LOCK  
4 CORNERS

ON UNDERSIDE OF COVER USING 1/2" GOTHIC CHARACTERS MARK: GAGE NO. # 58796 (SEE NOTE #12)

ON FRONT OF CASE USING 1/2" GOTHIC CHARACTERS MARK: CASE NO. # 58800 (SEE NOTE #12)

QTY	PART NO.	DESCRIPTION	MATL	FINISHED SIZE	NOTE
22	22	- 22 FLAT HD. WOODSCR.	STAINLESS STEEL	#6 x 3/4 LG.	+
21	10	- 21 FLAT HD. WOODSCR.	STAINLESS STEEL	#8 x 3/4 LG.	+
20	2	- 20 CHEST HANDLE	STEEL	#3 1/4	7
19	4	- 19 PAD	FELT	1/16 x 1 1/2 x 3/4	10
18	4	- 18 TRAP BLOCK	HARD WOOD	1 x 1 3/4 x 3 3/8	2
17	1	- 17 CONTINUOUS HINGE	STEEL	1/4 x 1/2 x 2 1/8	8
16	24	- 16 FLAT HD. WOODSCR.	STAINLESS STEEL	#6 x 1/2 LG.	+
15	8	- 15 BOX CORNER	STEEL	1 1/2"	9
14	1	- 14 NAMEPLATE	ALUMINUM	3/4 x 3 x 6	5
13	4	- 13 ROUND HD. WOODSCR.	STAINLESS STEEL	#6 x 1/2 LG.	+
12	2	- 12 COVER ALIGNMENT BLOCK	HARD WOOD	3/4 x 3/4 x 2	2
11	1	- 11 CHAIN TO SUIT	ST. CAD. PL.	AS REQ'D.	+
10	2	- 10 ENDS - CASE	PLYWOOD	3/4 x 18 3/4 x 19 1/4	1
9	2	- 9 ENDS - COVER	PLYWOOD	3/4 x 2 x 18 3/4	1
8	2	- 8 ROUND HD. WOODSCR.	STAINLESS STEEL	70 SUIT	+
7	2	- 7 SIDES - CASE	PLYWOOD	3/4 x 19 1/4 x 25 5/8	1
6	1	- 6 PAD	FELT	1/16 x 1 7/8 x 2 1/8	10
5	2	- 5 SIDES - COVER	PLYWOOD	3/4 x 2 x 25 5/8	1
4	2	- 4 DRAWBOLT	STEEL	---	6
3	12	- 3 FLAT HD. WOODSCR.	STAINLESS STEEL	#6 x 3/8 LG.	+
2	1	- 2 PAD	FELT	1/16 x 1 1/2 x 2 1/8	10
1	1	- 1 PAD	FELT	1/16 x 1 1/2 x 2 1/8	10
		SM-D-58800-1 TOP & BOTTOM	PLYWOOD	3/4 x 18 x 24 1/8	1

UNLESS OTHERWISE SPECIFIED DIMENSIONS ARE IN INCHES. DIMENSIONS ON FRACTIONS - DECIMALS ANGLES ± 1/32 ± ° ±'		MOTOROLA INC.		CASE FOR GAGE		DEPARTMENT OF THE ARMY SIGNAL CORPS ENGINEERING LABORATORIES	
DRAWN J. MACH		ORDER NO. 14985-PC-58-A1(51)		R-390A/URR		FOR: WASHINGTON NEW JERSEY	
DATE 8-20-58		REVIEWED XXX		APPROVED MCH		SM-D-58800	
CHECKED PRO.		DATE 20 AUG. 1958		SCALE HALF		WHEN REFERRING TO THIS DRAWING STATE DRAWING NO., APPLICABLE ISSUE SYMBOL, IF ANY, AND DATE.	
APPLICATION		APPROVED					