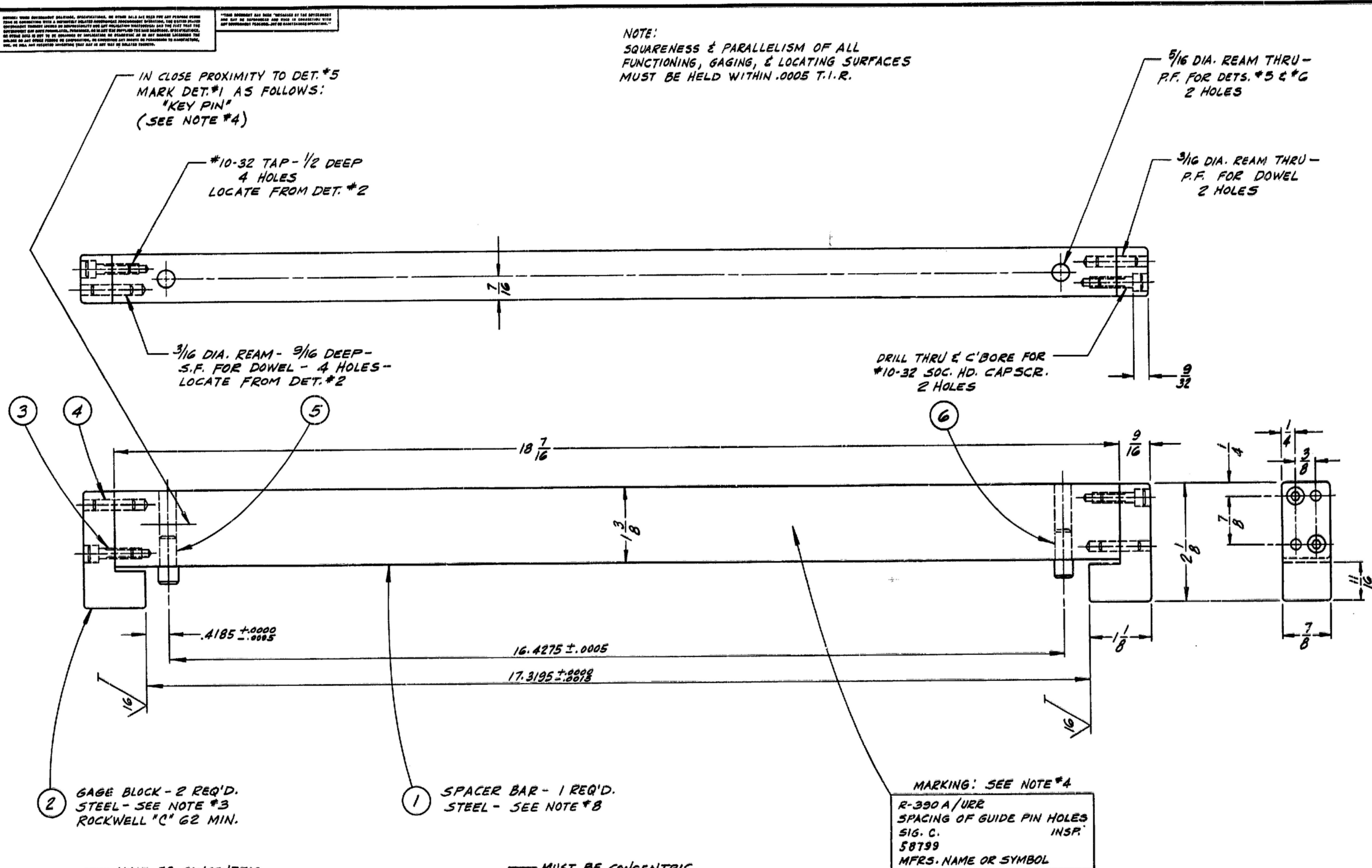
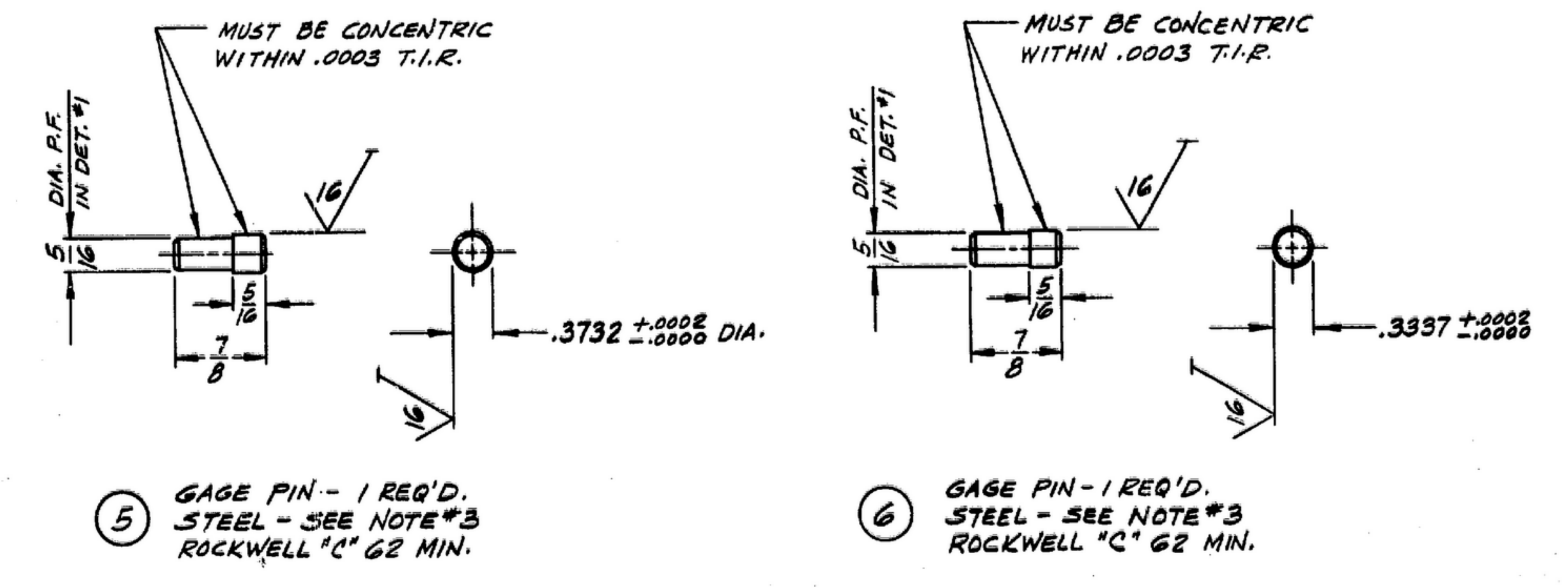


SYM	DESCRIPTION	DATE	APPROVAL
-----	-------------	------	----------

NOTE:
SQUARENESS & PARALLELISM OF ALL
FUNCTIONING, GAGING, & LOCATING SURFACES
MUST BE HELD WITHIN .0005 T.I.R.



- NOTES:
- GAGE TO BE MADE PER MIL-G-13481 (SIG. C.)
 - MECHANICAL FITS SHALL BE PER SPEC MIL-G-10944.
 - MATERIAL SPECS. PER QQ-5-00778 (ARMY ORD.) CLASS FS-A2.
 - METAL STAMP OR ENGRAVE USING 1/8" GOTHIC CHARACTERS.
 - BREAK ALL UNNECESSARY SHARP EDGES & CORNERS.
 - ALL SCREW THREADS ARE PER DEPT. OF COMM. HANDBOOK #H-28
 - PROTECTIVE FINISH SHALL BE APPLIED TO THE NON-FUNCTIONING, NON LOCATING, & NON GAGING SURFACES. BLACK PREFERRED PER MIL-G-10944.
 - STEEL, BAR, HOT ROLLED (NORMALIZED) FS-1010 TO FS-1025 PER SPEC. QQ-S-633.
 - THIS GAGE WILL CHECK DWG. #SM-D-



QTY	PART NO.	DESCRIPTION	MATL	FINISHED SIZE	NOTE
6	1	-6 GAGE PIN		3/8 DIA. x 1/16 L.	3
5	1	-5 GAGE PIN		5/8 DIA. x 1/16 L.	3
4	4	-4 DOWEL		3/16 DIA. x 3/16 L.	+
3	4	-3 SOC. HD. CAPSCR.		#10-32 UNF x 3/16 L.	6
2	2	-2 GAGE BLOCK		7/8 x 1 1/4 x 1/8	3
1		M-D-58799-1 SPACER BAR	STEEL	7/8 x 1 3/4 x 1/8	5

UNLESS OTHERWISE SPECIFIED DIMENSIONS ARE IN INCHES FRACTIONS DECIMALS ANGLES ± 1/64 ± .005 ± 0°30'		MOTOROLA INC.	GAGE TO CHECK SPACING OF GUIDE PIN HOLES. R-390 A/URP	DEPARTMENT OF THE ARMY SIGNAL CORPS ENGINEERING LABORATORIES FORT SMOOTH, NEW JERSEY
ORDER NO. 14385-PC-58-A1-(9)	SHRINK CORPS	REVIEWED XXX	SM-D-58799	
DRAWN J. MACH	APPROVED [Signature]	DATE 9-16-58		
CHECKED R.A.L.	APPROVED [Signature]	DATE 16 SEPT. 1958		
APPLICATION	APPROVED [Signature]	SCALE FULL		