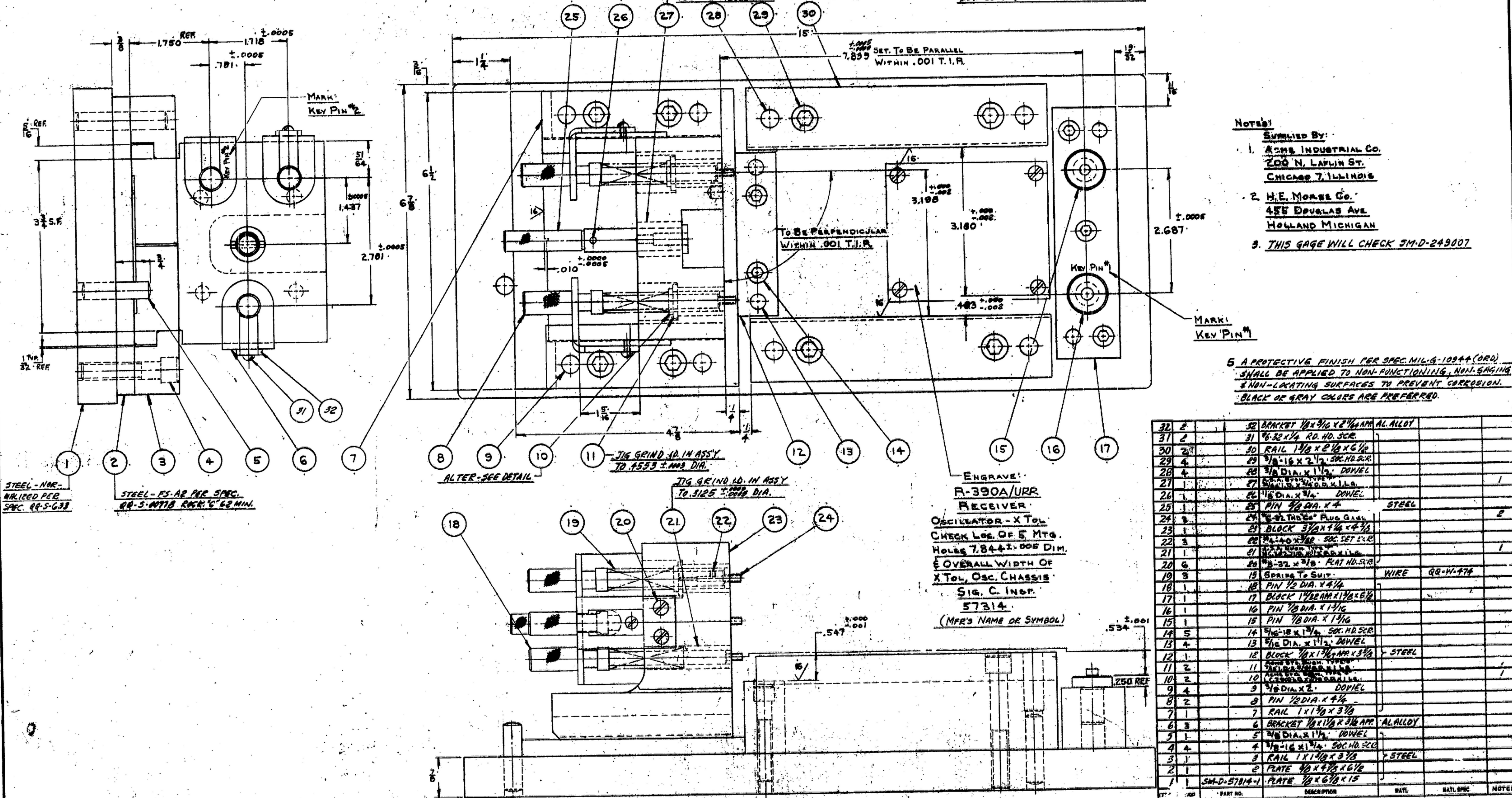


NOTE: DIMENSIONS UNLESS OTHERWISE SPECIFIED, ARE GIVEN IN INCHES. DIMENSIONS IN FRACTIONS OR DECIMALS SHALL BE TO NEAREST THOUSAND UNLESS OTHERWISE SPECIFIED. DIMENSIONS IN DECIMALS SHALL BE TO NEAREST THOUSAND UNLESS OTHERWISE SPECIFIED. DIMENSIONS IN DECIMALS SHALL BE TO NEAREST THOUSAND UNLESS OTHERWISE SPECIFIED.

NOTE: *FOR INFORMATION ONLY, CONTRACTOR MAY AT HIS OPTION DEVIATE FROM THESE PROCESS DETAILS
 JIG GRIND I.D. IN ASSY.
 TO .500 ±.002 DIA.

*NOTE:
 SET DET. 23 TO 7.839 DIM. GRIND
 DETS. 15, 17 & 23 FLUSH. REMOVE
 DET. 23 & GRIND .010 ±.002 STEP



Notes:
 SUPPLIED BY:
 1. ACME INDUSTRIAL CO.
 200 N. LAFLIN ST.
 CHICAGO 7, ILLINOIS
 2. H.E. MORSE CO.
 455 DOUGLAS AVE.
 HOLLAND MICHIGAN
 3. THIS GAGE WILL CHECK SM-D-249007
 5. A PROTECTIVE FINISH PER SPEC. MIL-G-10944 (ORD) SHALL BE APPLIED TO NON-FUNCTIONING, NON-ENGAGING & NON-LOCATING SURFACES TO PREVENT CORROSION. BLACK OR GRAY COLOURS ARE PREFERRED.

QTY	PART NO.	DESCRIPTION	MATL.	NATL. SPEC.	NOTES
32	2	32 BRACKET 1/8 x 3/16 x 2 1/4 AM ALLOY			
31	2	31 1/8 x 1/4 RD. HD. SCR.			
30	2	30 RAIL 1 1/8 x 2 1/8 x 6 1/8			
29	4	29 3/16 x 1/8 x 2 1/2, SEC. HD. SCR.			
28	4	28 3/16 DIA. x 1 1/2, DOWEL			
27	1	27 1/8 x 1/8 x 1 1/8, DOWEL			
26	1	26 1/8 DIA. x 3/16, DOWEL			
25	1	25 PIN 7/8 DIA. x 4, STEEL			
24	3	24 1/8 x 1/8 x 1/8, PLUG GAGE			2
23	1	23 BLOCK 3/4 x 1/4 x 1/4			
22	3	22 1/8 x 1/8 x 1/8, SEC. SET SCR.			
21	1	21 1/8 x 1/8 x 1/8, PLUG GAGE			1
20	6	20 3/32 x 3/16, RAIL HD. SCR.			
19	3	19 SPRING TO SUIT	WIRE	QR-W-474	
18	1	18 PIN 1/2 DIA. x 1/4			
17	1	17 BLOCK 1 1/8 x 1/8 x 1/8			
16	1	16 PIN 1/8 DIA. x 1 1/2			
15	1	15 PIN 1/8 DIA. x 1 1/2			
14	5	14 1/8 x 1/8 x 1/8, SEC. HD. SCR.			
13	4	13 1/8 DIA. x 1 1/2, DOWEL			
12	1	12 BLOCK 1/8 x 1/8 x 3/8, STEEL			
11	2	11 1/8 x 1/8 x 1/8, PLUG GAGE			1
10	2	10 1/8 x 1/8 x 1/8, PLUG GAGE			
9	4	9 1/8 DIA. x 2, DOWEL			
8	2	8 PIN 1/2 DIA. x 1/4			
7	1	7 RAIL 1 x 1/2 x 3/8			
6	3	6 BRACKET 1/8 x 1/4 x 3/8 AM ALLOY			
5	1	5 1/8 DIA. x 1 1/2, DOWEL			
4	4	4 1/8 x 1/8 x 1/8, SEC. HD. SCR.			
3	1	3 RAIL 1 x 1/2 x 3/8, STEEL			
2	1	2 PLATE 1/8 x 1/8 x 1/8			
1	1	SM-D-57314-1 PLATE 1/8 x 1/8 x 1/8			

ENGRAVE:
 R-390A/URR
 RECEIVER
 OSCILLATOR - X Tol.
 CHECK LOC. OF 5 MTS.
 HOLES 7.844 ±.005 DIM.
 & OVERALL WIDTH OF
 X Tol. OSC. CHASSIS
 SIG. C. INSP.
 57314
 (MFR'S NAME OR SYMBOL)

UNLESS OTHERWISE SPECIFIED DIMENSIONS ARE IN INCHES. TOLERANCES ON FRACTIONS OR DECIMALS ANGLES ±.002

ORDER # 08719-PH-55-53
 SIGNAL CORPS
 REVIEWED PNE
 APPROVED MCH-PNE
 DATE 24-10-55

SCALE FULL

APPLICATION

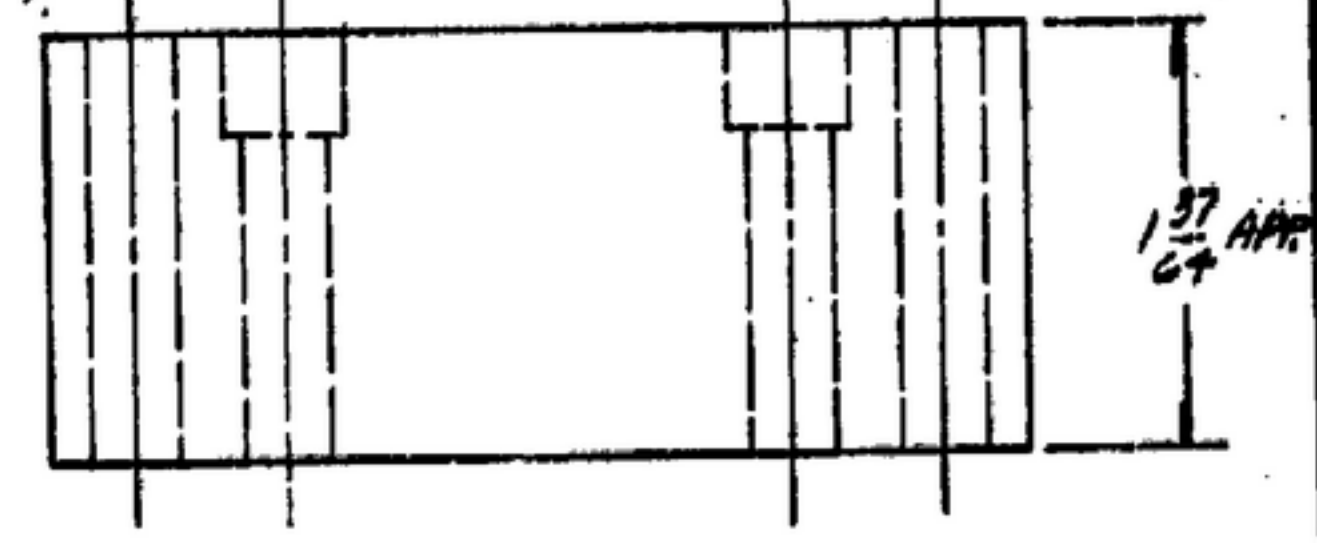
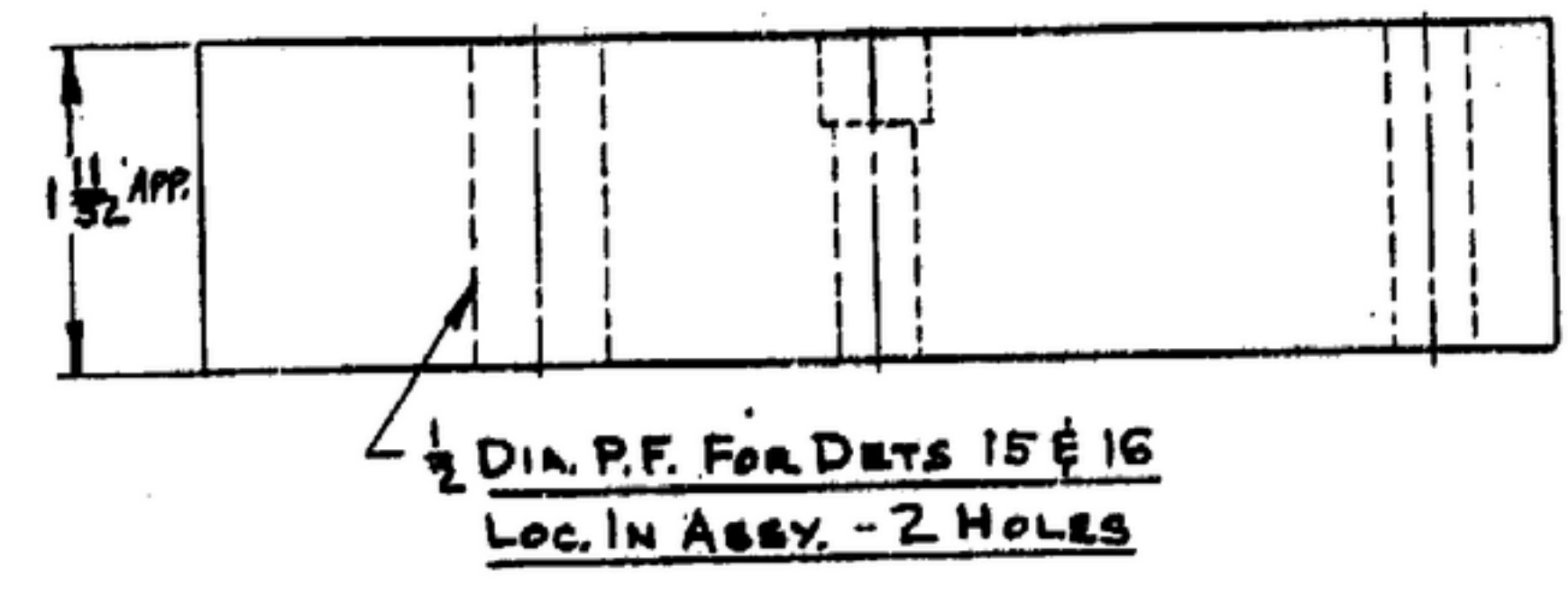
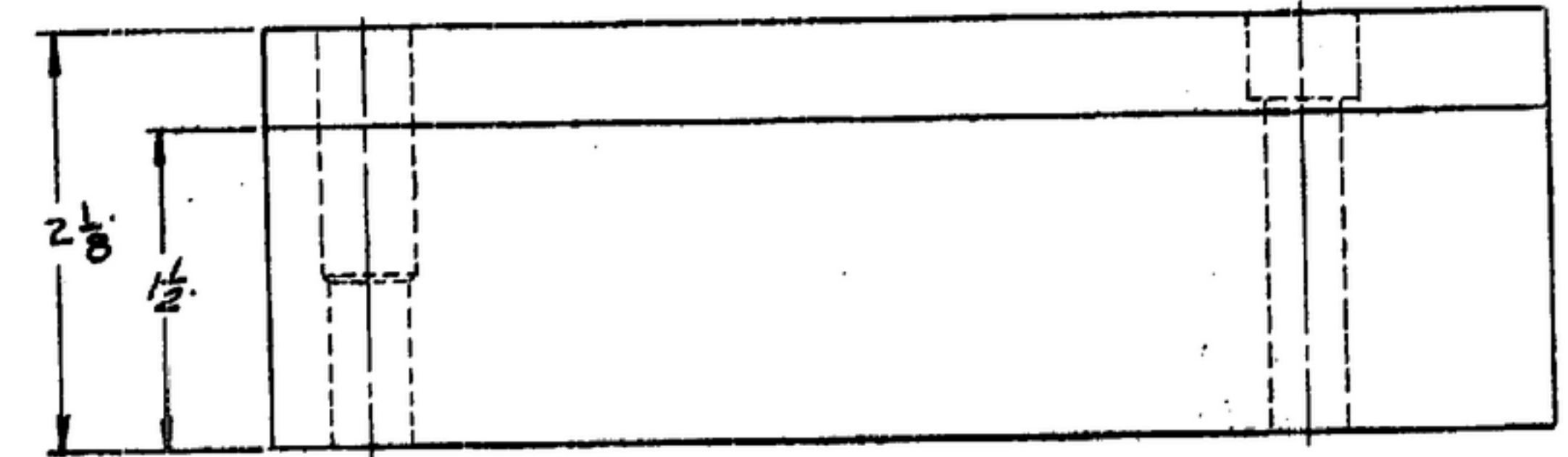
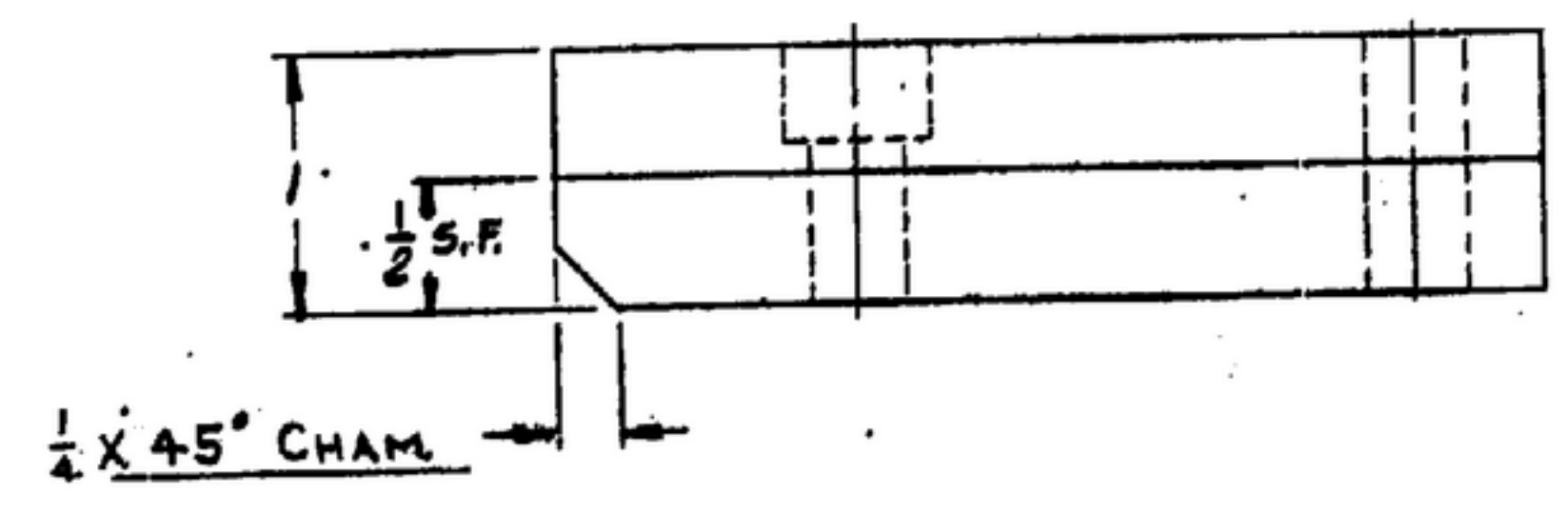
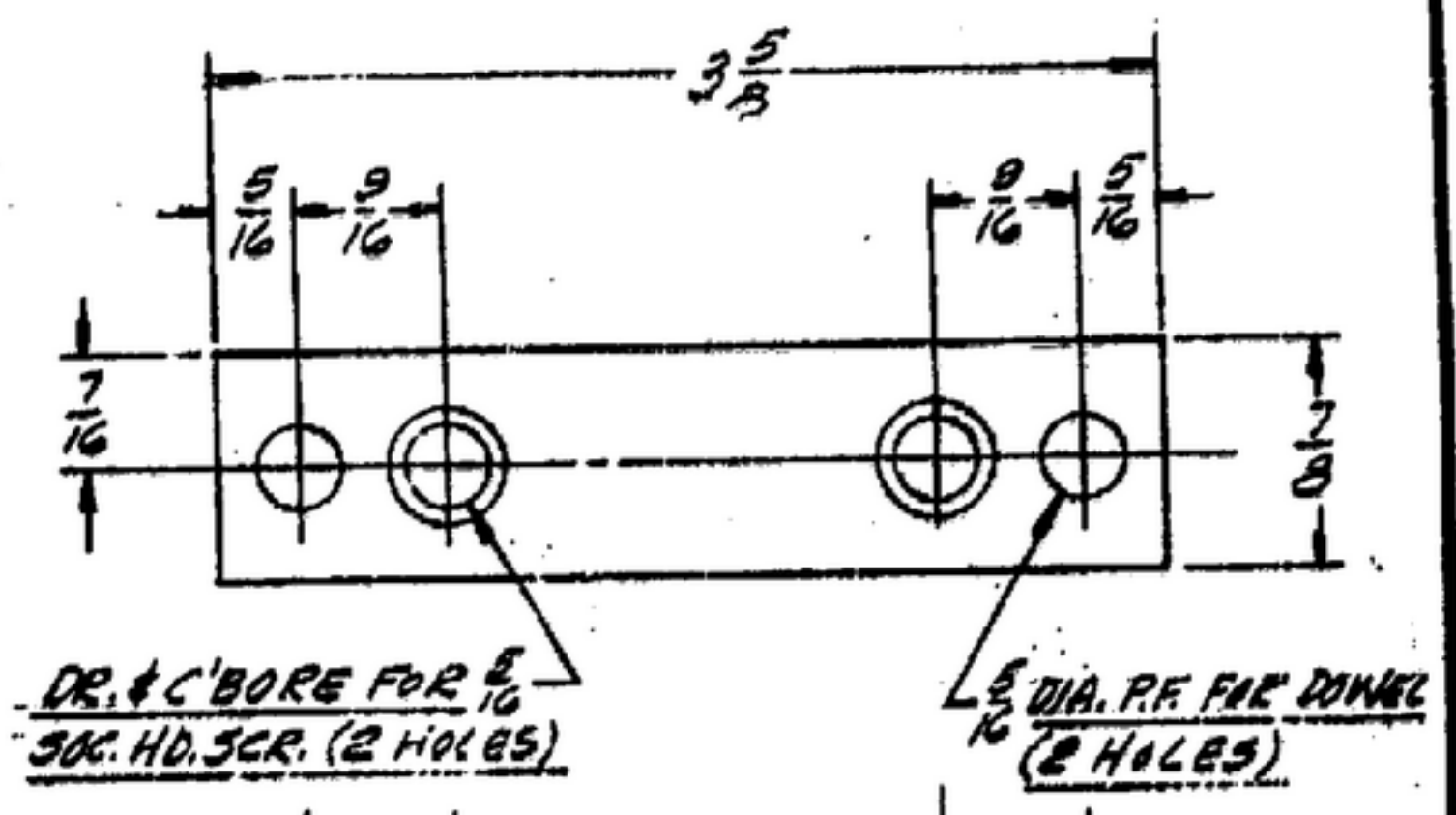
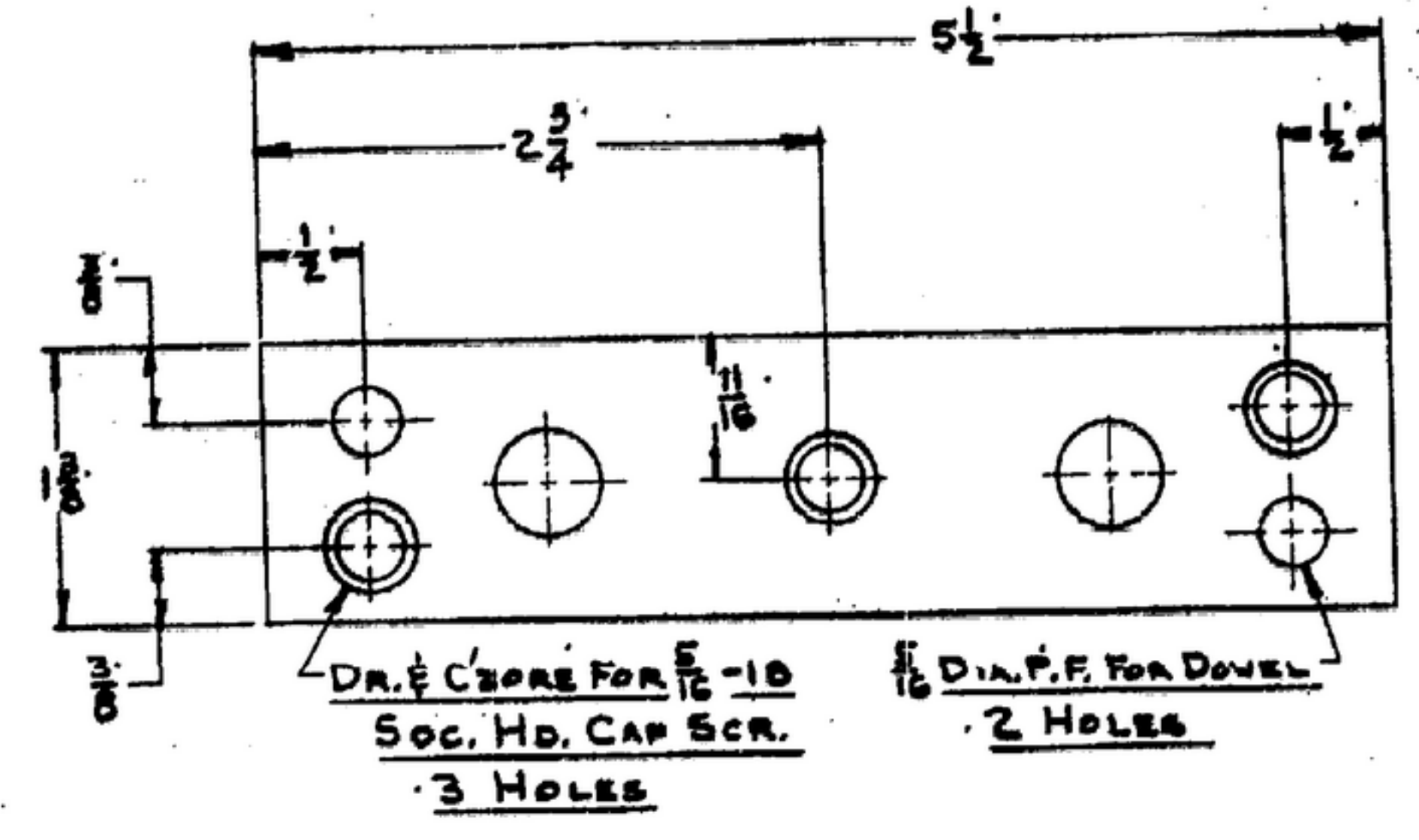
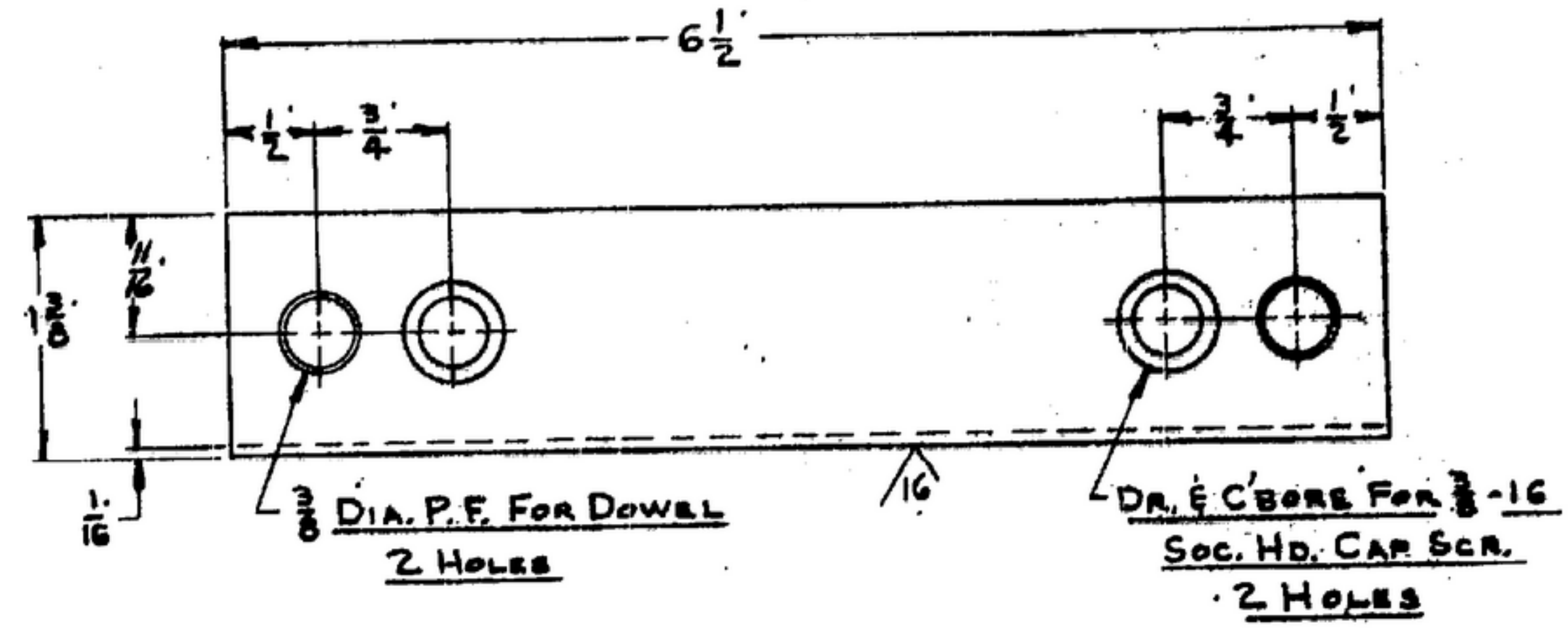
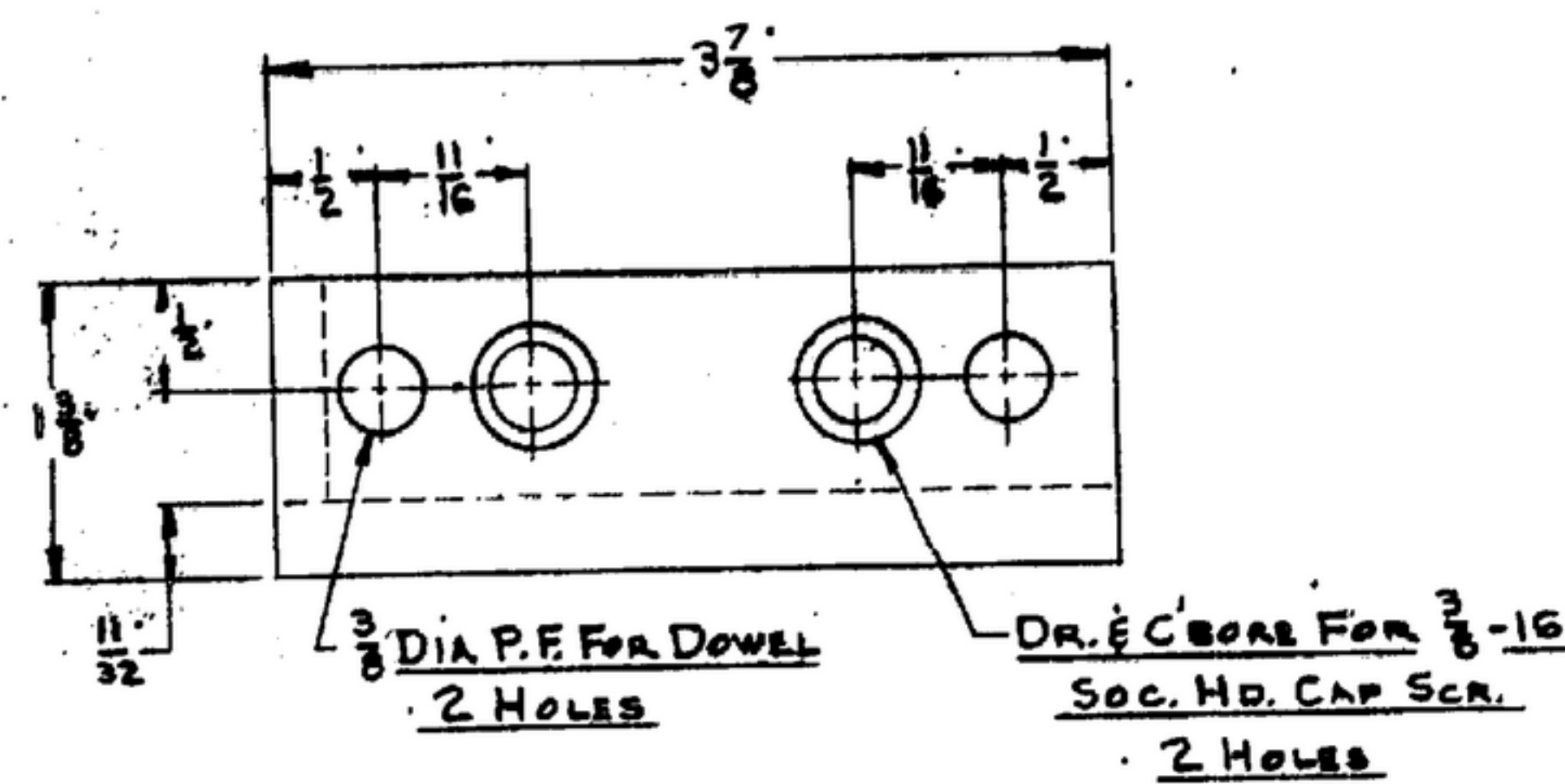
LIST OF MATERIAL

PIN GAGE
 TO CHECK LOCATION OF 5 MOUNTING HOLES INCLUDING 7.844 ±.005 DIM. & OVERALL WIDTH OF X Tol. OSC. CHASSIS.

DEPARTMENT OF THE ARMY
 SIGNAL CORPS ENGINEERING
 LABORATORIES
 FORT MONMOUTH, NEW JERSEY
 SM-D-57314
 SHEET 1 OF 3

NOTE: *FOR INFORMATION ONLY. CONTRACTOR MAY AT HIS OPTION DEVIATE FROM THESE PROCESS DETAILS

UNLESS OTHERWISE SPECIFIED, DIMENSIONS ARE IN INCHES. DIMENSIONS ON FRACTIONS OR DECIMALS ANGLES TOLERANCES ON FRACTIONS DECIMALS ANGLES ±.002 ±.001 ±.0005 ±.0003

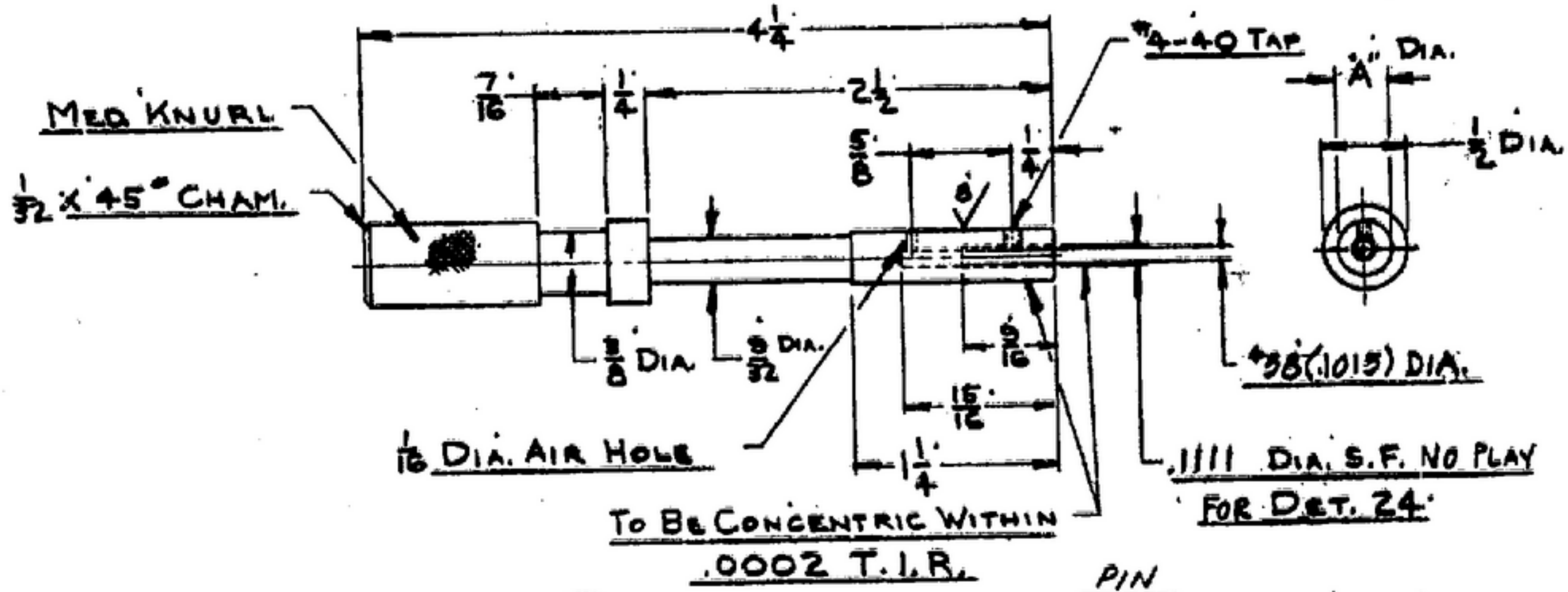
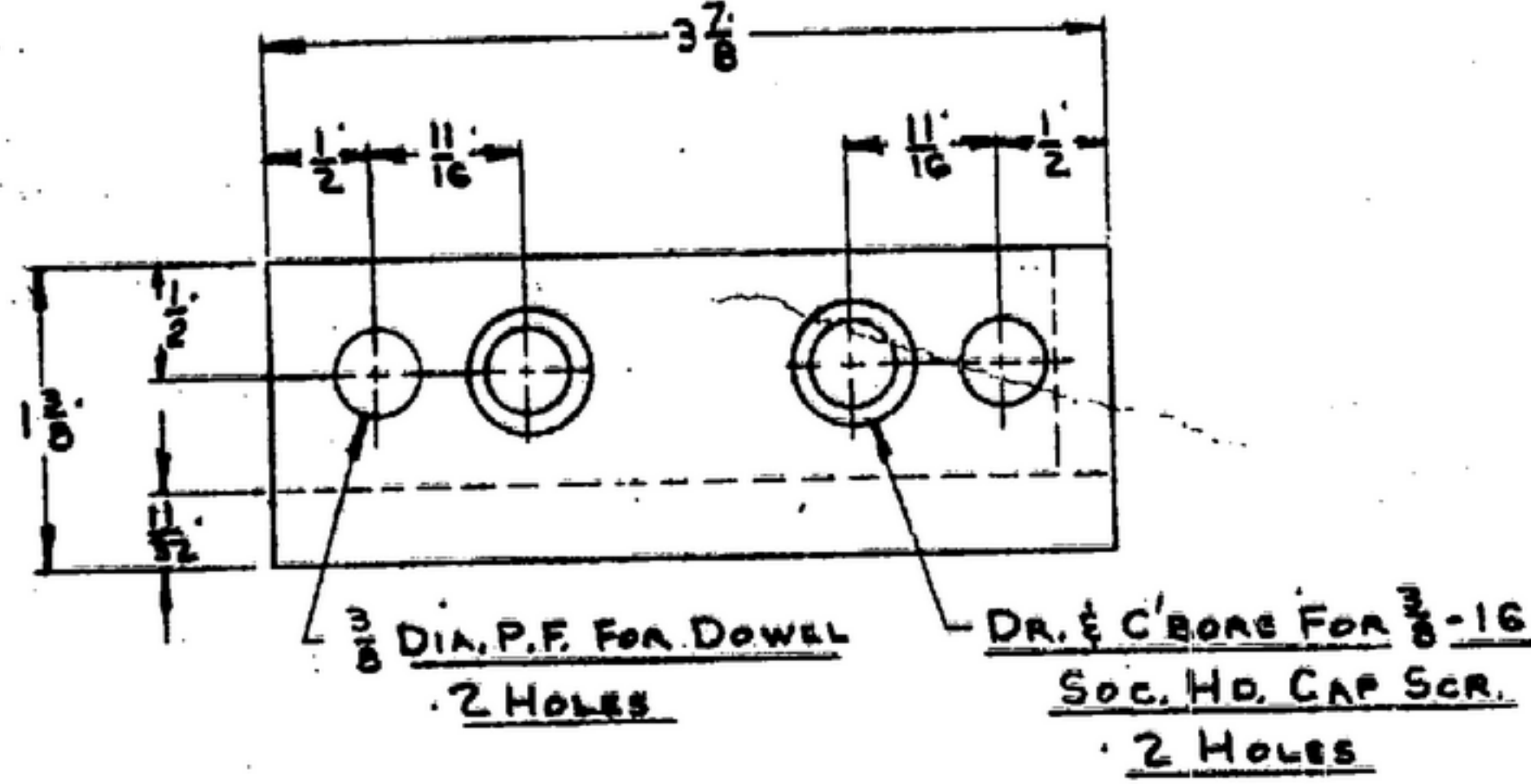


7 1 REQ. - STEEL - FS-A2
PER SPEC. QQ-S-0077B
Rock 'C' 62 MIN.

30 2 REQ. - STEEL - NORMALIZED & TEMPERED
PER SPEC. QQ-S-633

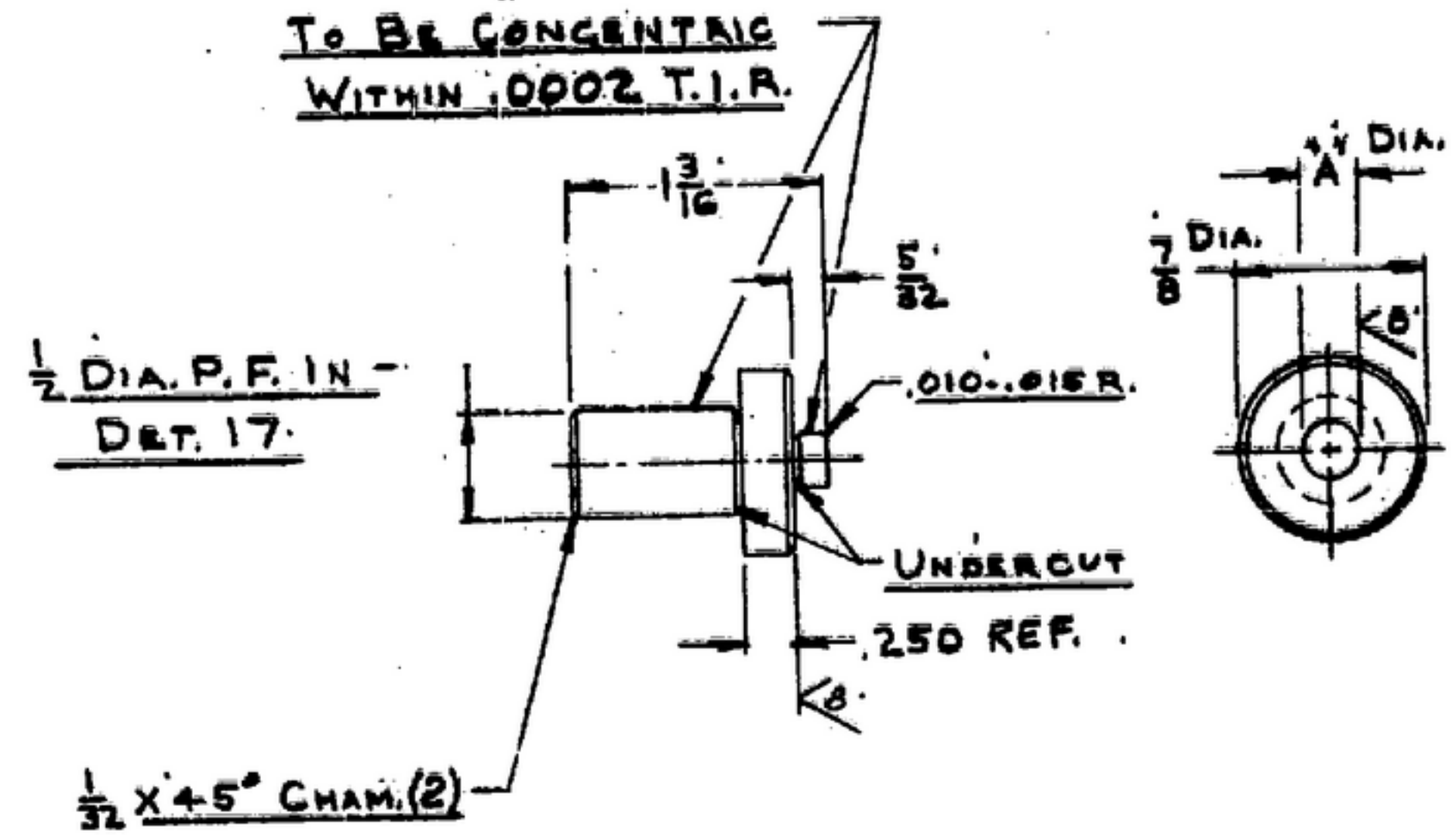
17 1 REQ. - STEEL - NORMALIZED
PER SPEC. - QQ-S-633

12 1 REQ. - STEEL - FS-A2
PER SPEC. QQ-S-0077B
Rock 'C' 62 MIN.



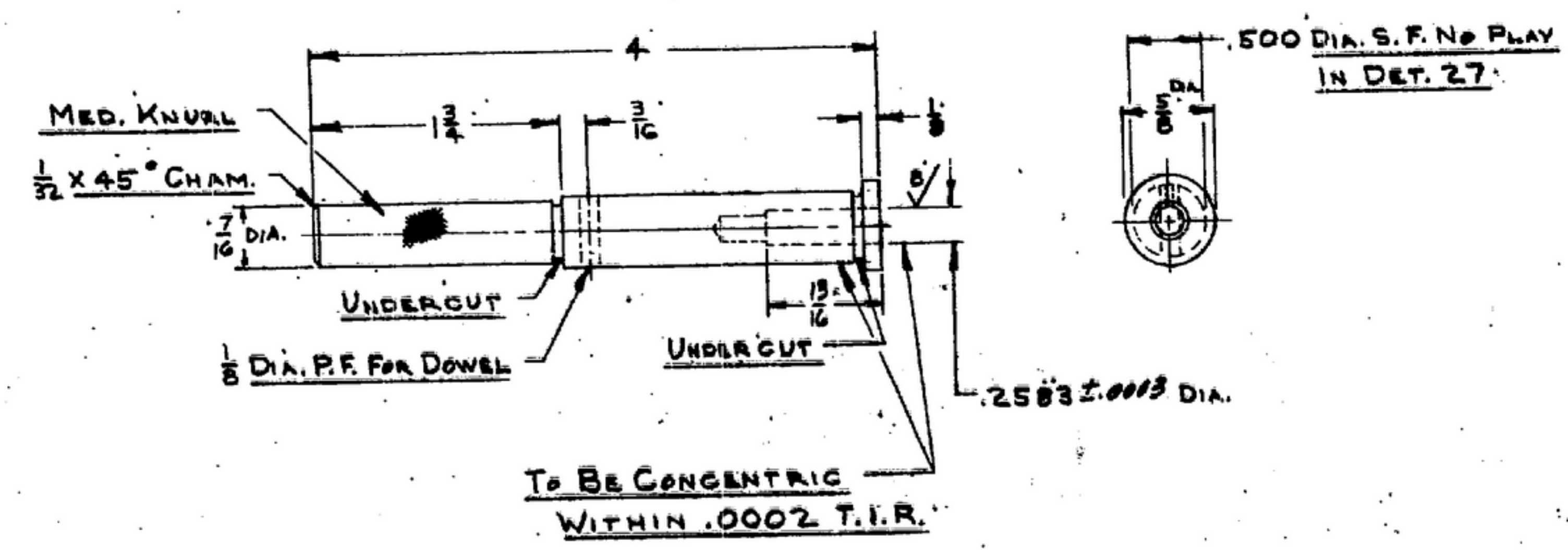
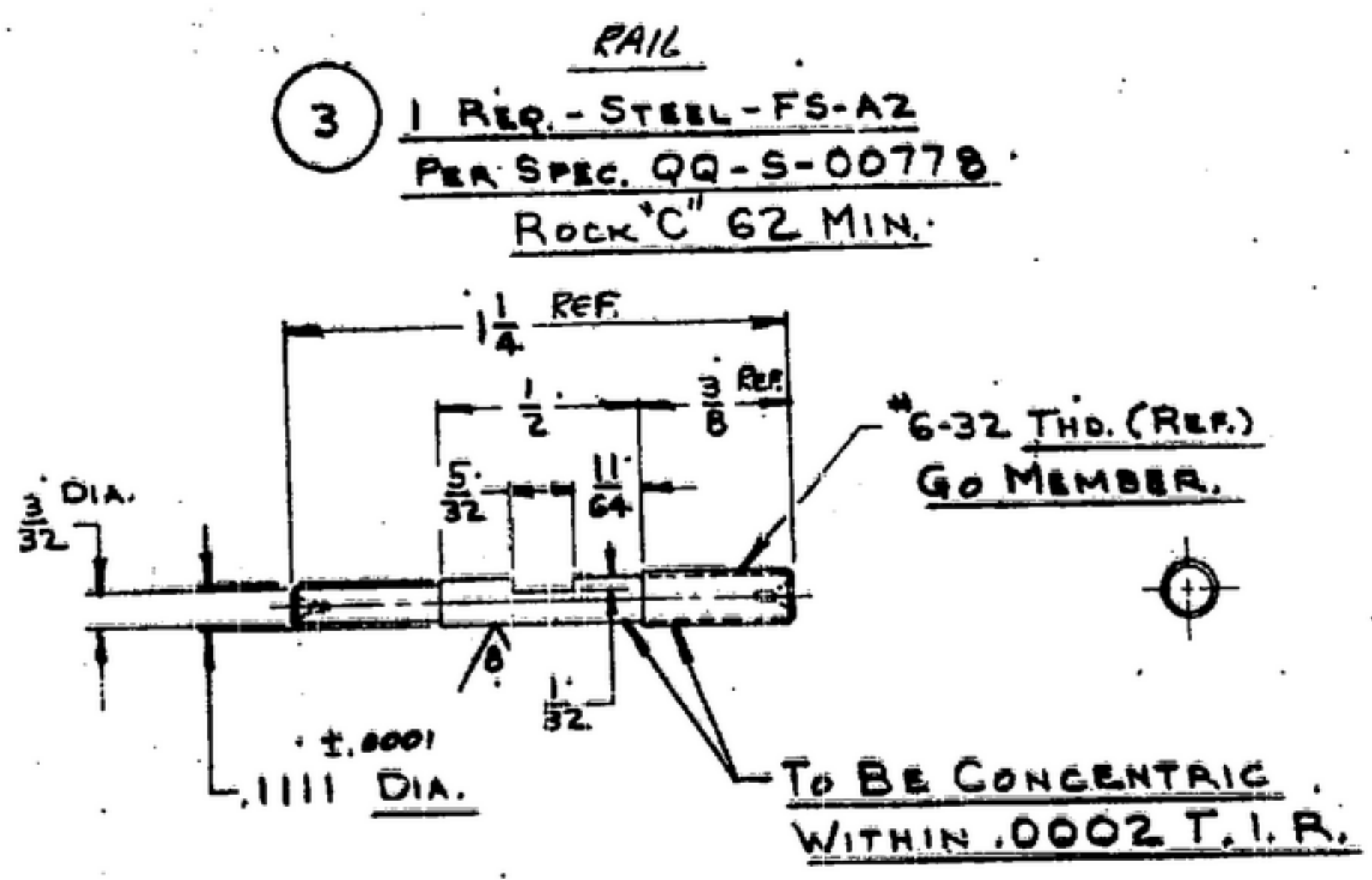
8 2 REQ. - STEEL - FS-A2 PER SPEC. QQ-S-0077B
Rock 'C' 62 MIN. 'A' = .2907 DIA. S.F. IN DET. 10.

18 1 REQ. - STEEL - FS-A2 PER SPEC. QQ-S-0077B
Rock 'C' 62 MIN. 'A' = .3125 DIA. S.F. IN DET. 21.



15 1 REQ. - STEEL - FS-A2 PER SPEC. QQ-S-0077B
Rock 'C' 62 MIN. 'A' = .2187 ±.0005 DIA.

16 1 REQ. - STEEL - FS-A2 PER SPEC. QQ-S-0077B
Rock 'C' 62 MIN. 'A' = .248 ±.0003 DIA.



25 1 REQ. - STEEL - FS-A2 PER SPEC. QQ-S-0077B
Rock 'C' 62 MIN.

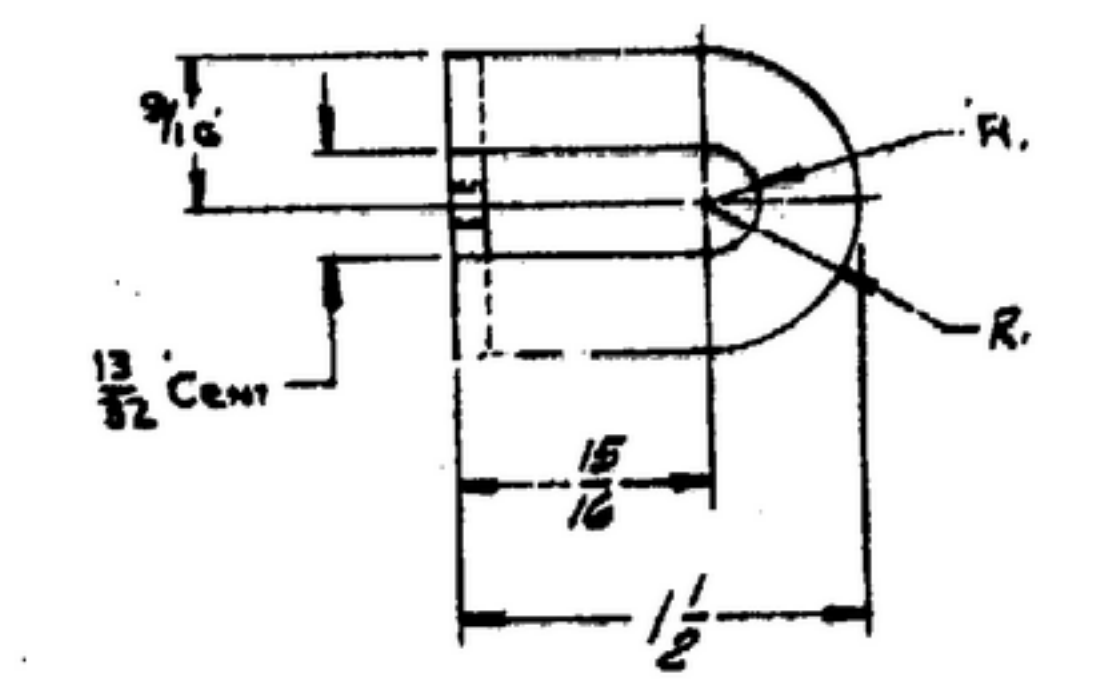
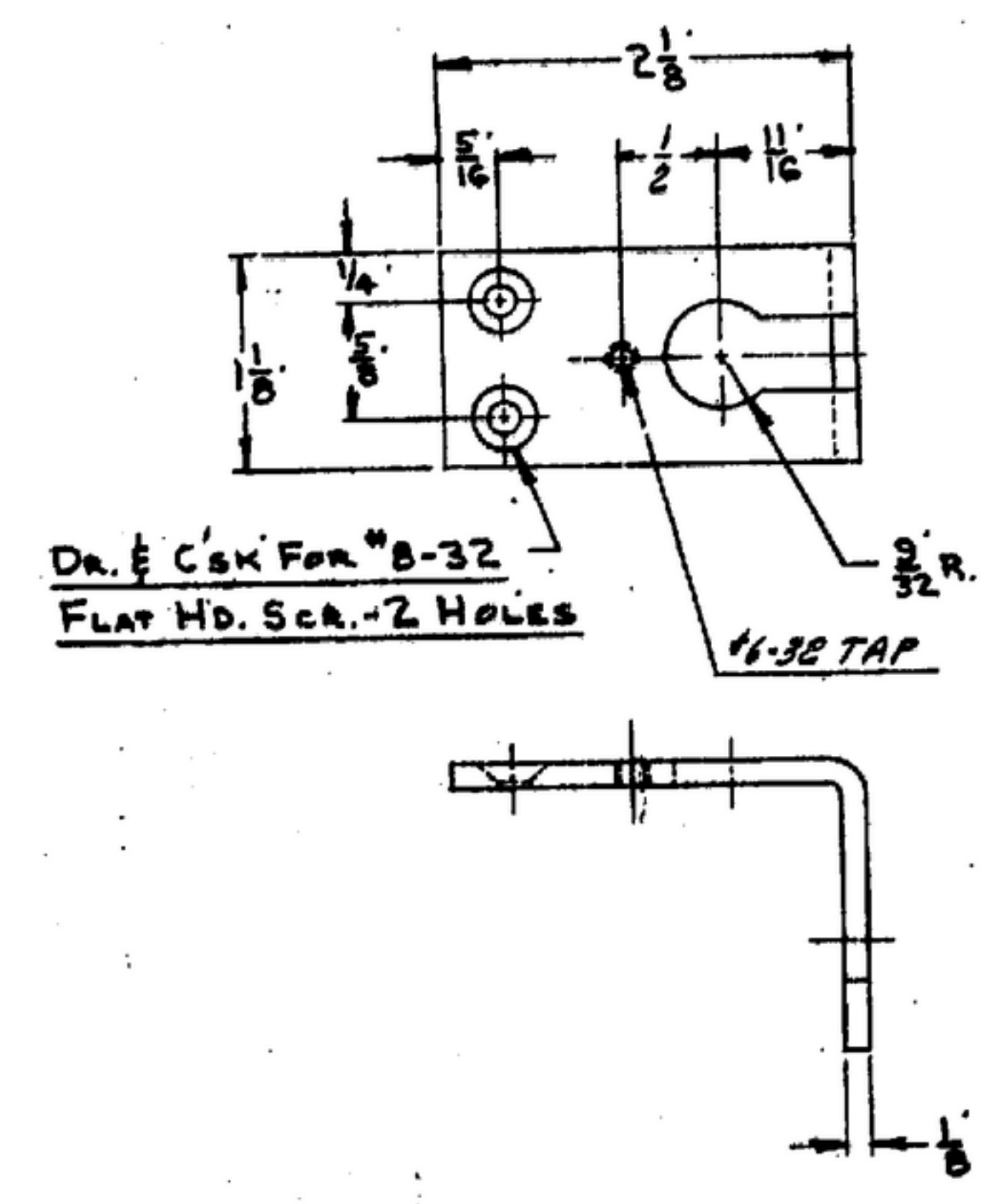
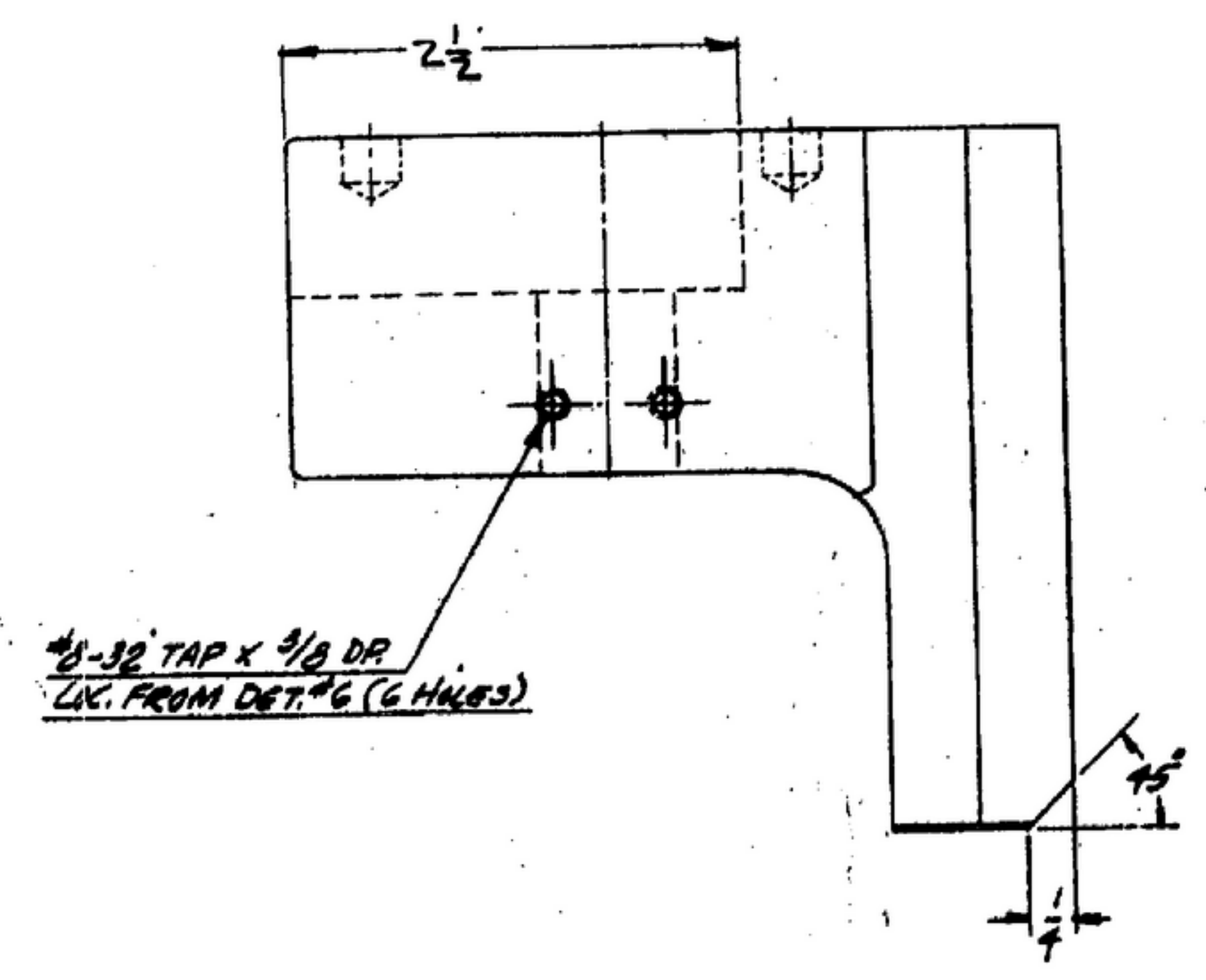
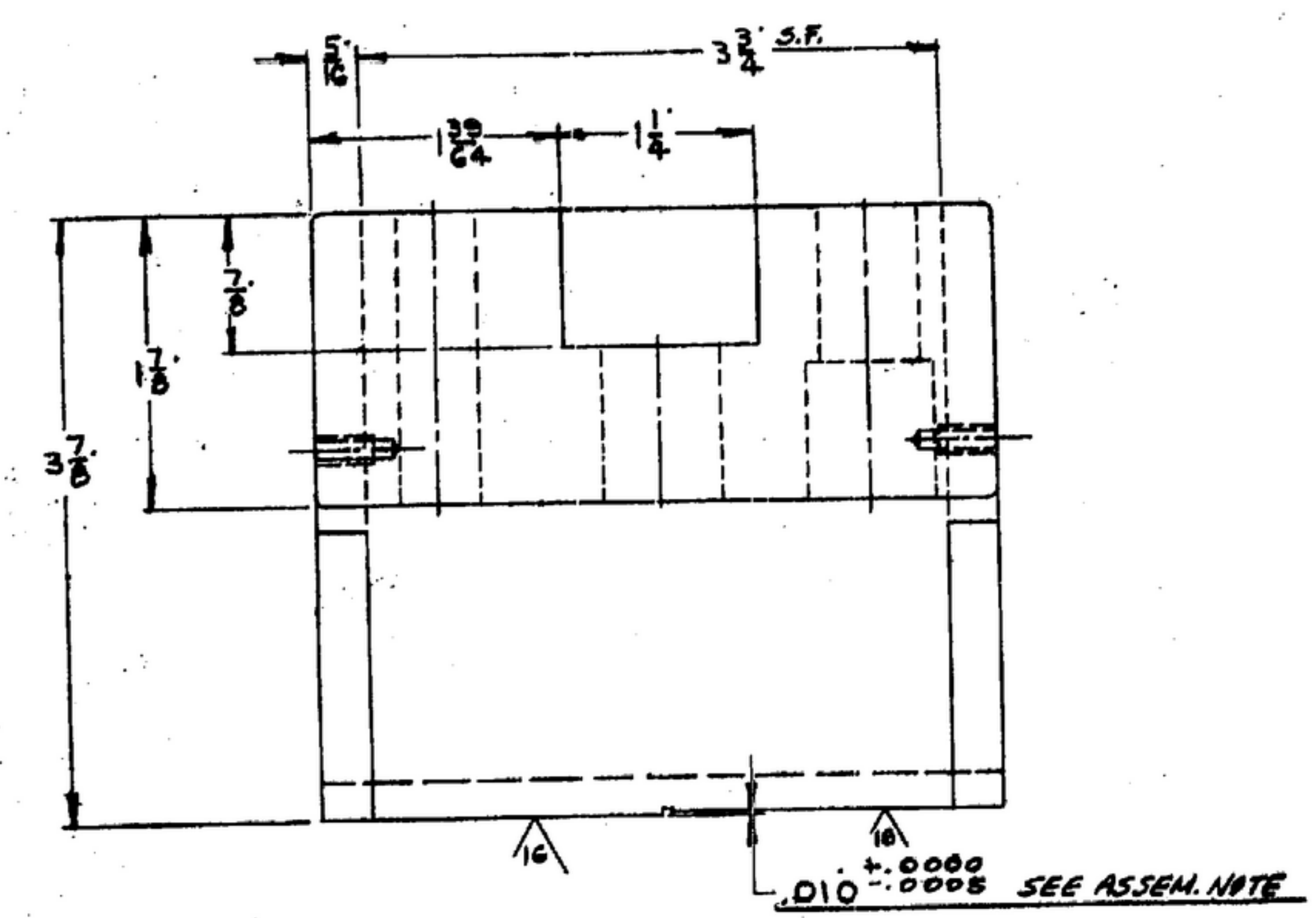
24 3 REQ. - 'G' THREAD MEMBER
ALTER AS SHOWN.
SCALE 2:1.

REQ.	PART NO.	DESCRIPTION	MATL.	MATL. SPEC.
LIST OF MATERIAL				

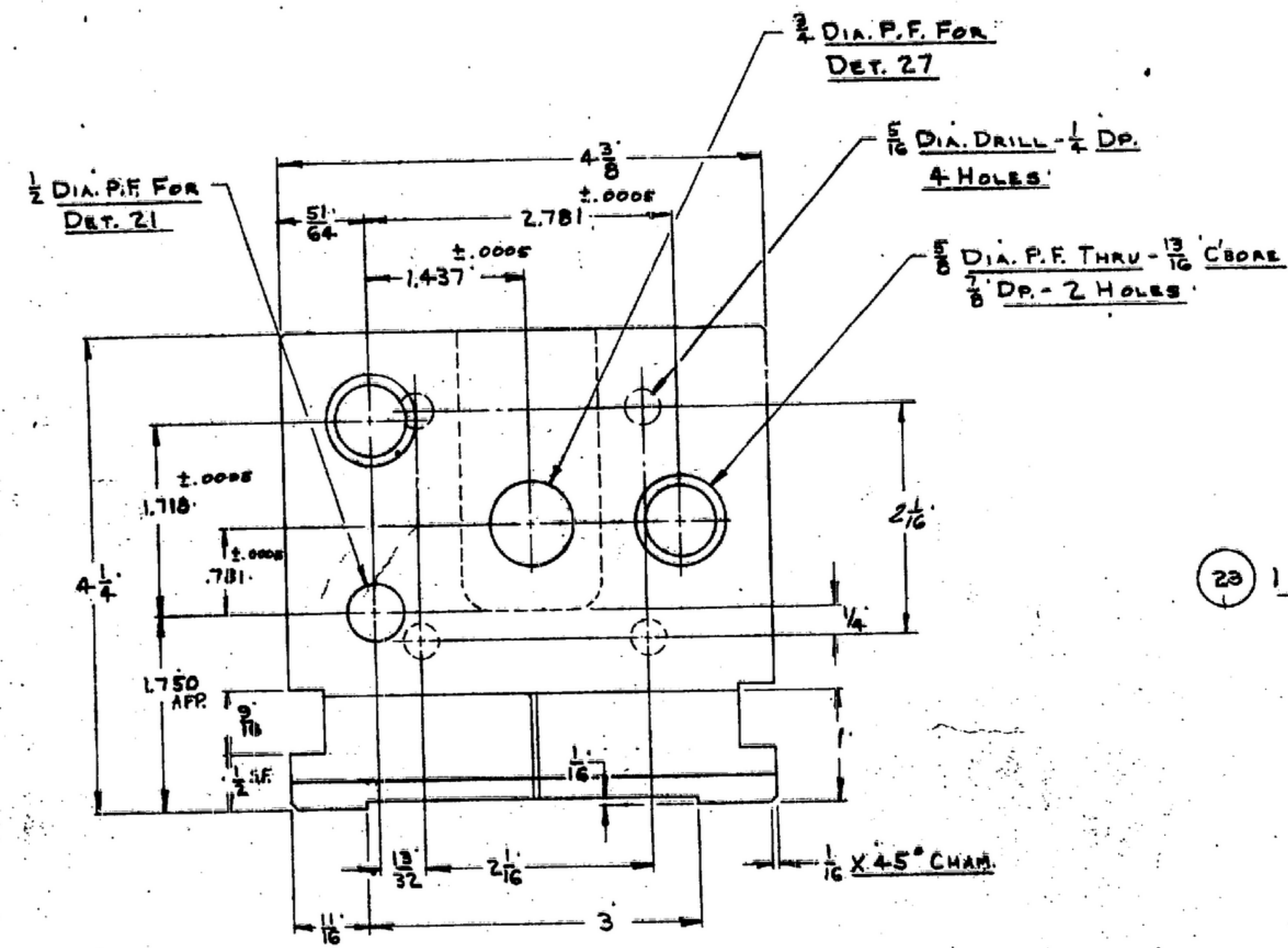
UNLESS OTHERWISE SPECIFIED DIMENSIONS ARE IN INCHES. TOLERANCES ON FRACTIONS DECIMALS ANGLES ±.002 ±.001 ±.0005 ±.0003		ORDER # 08719-PH-55-98 SIGNAL CORPS REVIEWED PME APPROVED W.H. PME DATE 24-10-55 SCALE FULL APPLICATION		PIN GAGE TO CHECK LOCATION OF 5 MOUNTING HOLES, INCLUDING 7.844 ±.0008 DIM. & OVERALL WIDTH OF X TOU OSG. CHASSIS DEPARTMENT OF THE ARMY SIGNAL CORPS ENGINEERING LABORATORIES FORT MONMOUTH NEW JERSEY SM-D-57314 SHEET 2 OF 3 WHEN REFERRING TO THIS DRAWING STATE DRAWING NO., APPLICABLE ISSUE, AND DATE.	
--	--	---	--	--	--

SYM	DESCRIPTION	DATE	APPROVAL

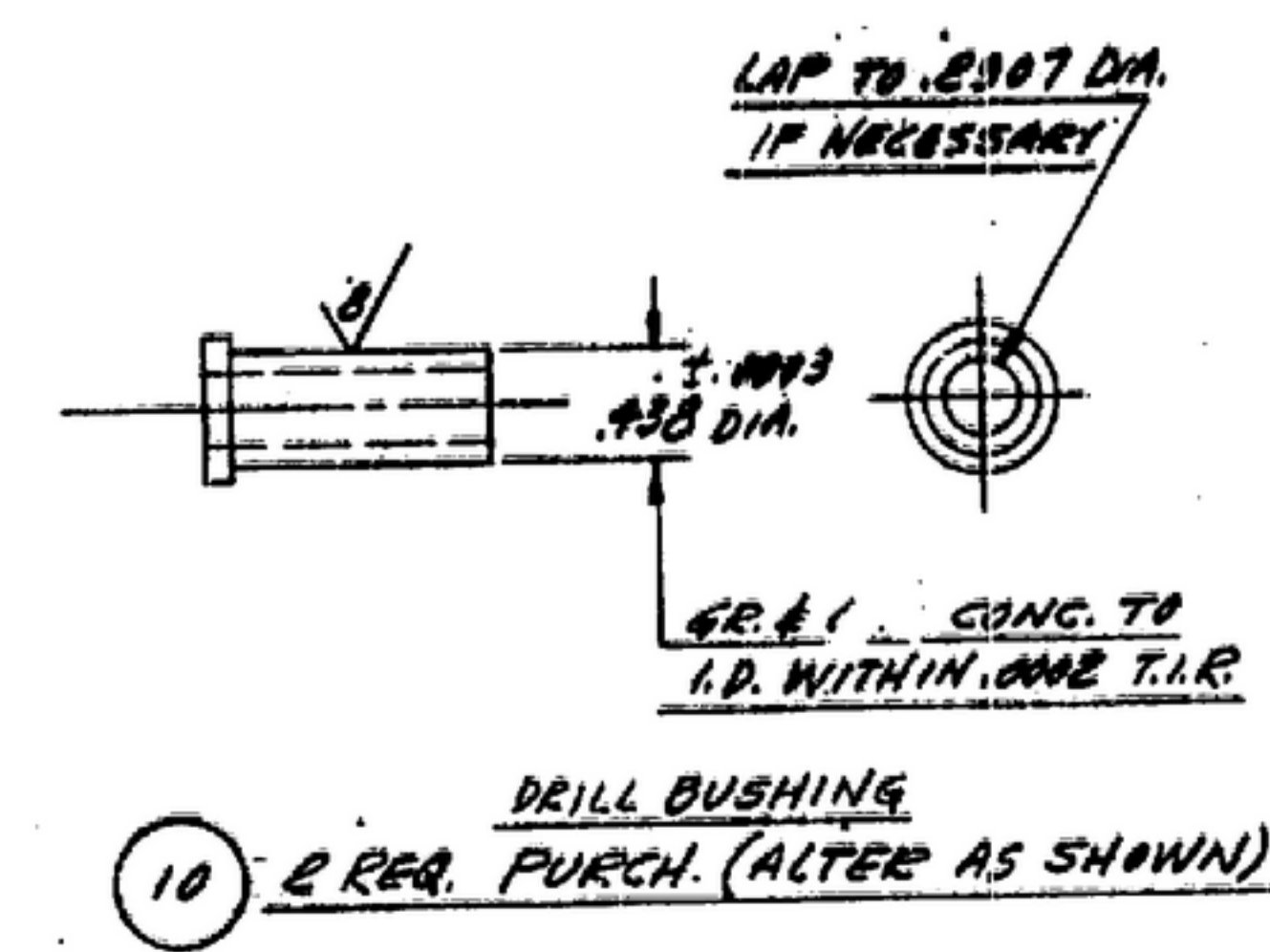
NOTE:
*FOR INFORMATION ONLY, CONTRACTOR MAY AT HIS OPTION DEVIATE FROM THESE PROCESS DETAILS



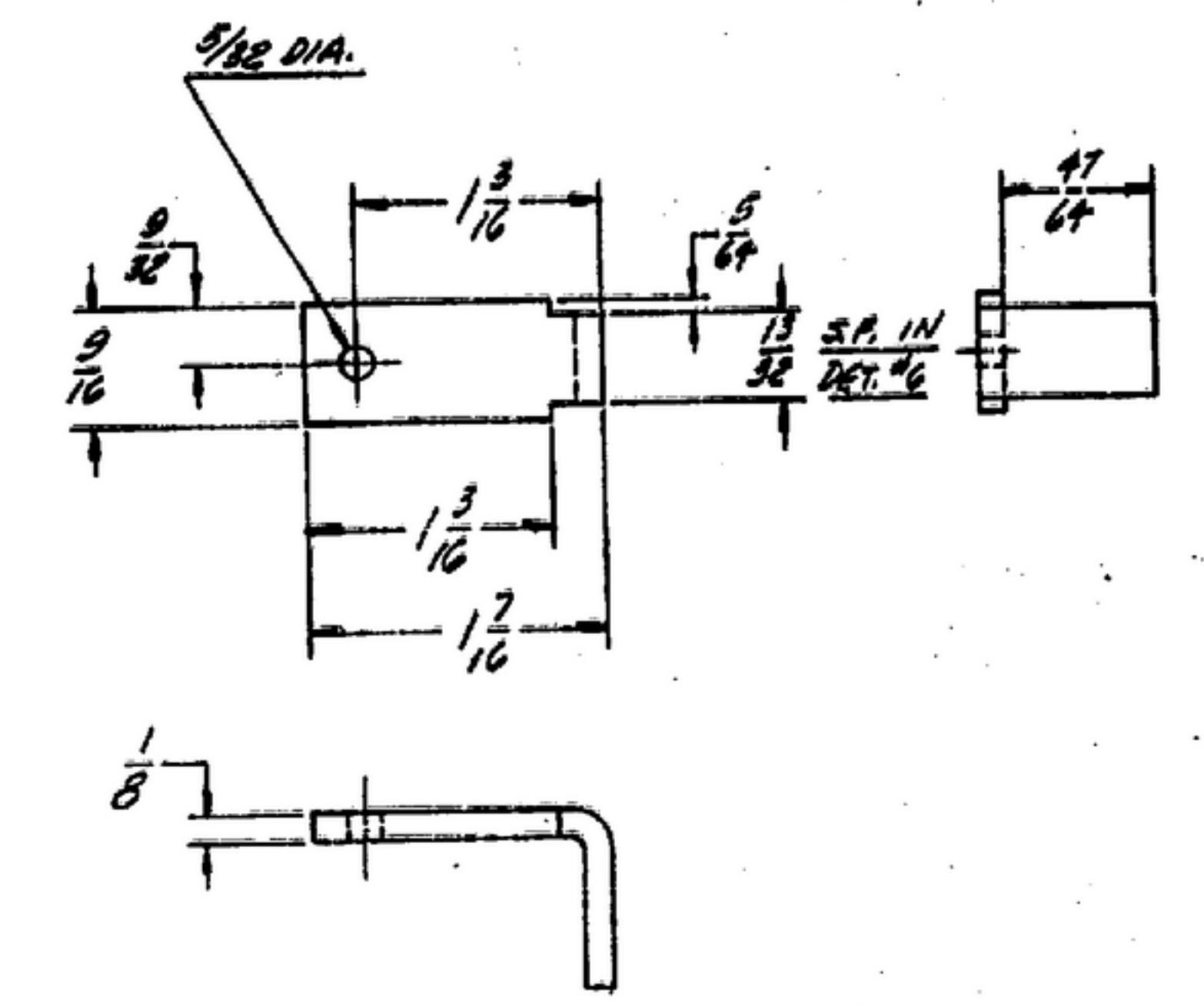
BRACKET
⑥ 3 REQ. - AL(52-SH-34)
PER SPEC. QR-A-318 TEMPER O



BLOCK
② 1 REQ. - STEEL - NORMALIZED & TEMPERED
PER SPEC. QR-S-633.
PACK 'C' 60-63.



DRILL BUSHING
⑩ 2 REQ. PURCH. (ALTER AS SHOWN)



BRACKET
⑩ 2 REQ. - ALUMINUM ALLOY 52-SH-34
PER SPEC. QR-A-318 TEMPER O

REQD	PART NO.	DESCRIPTION	MATL	MATL SPEC
LIST OF MATERIAL				

UNLESS OTHERWISE SPECIFIED	SC-D-15700
DIMENSIONS ARE IN INCHES	USED ON
TOLERANCES ON	APPLICATION
FRACTIONS DECIMALS ANGLES	
$\pm 1/32$	

ORDER N° 08719-PH-55-95
SIGNAL CORPS
REVIEWED PME
APPROVED M.H. PME
DATE 24-10-55 SCALE FULL

DEPARTMENT OF THE ARMY
SIGNAL CORPS ENGINEERING
LABORATORIES
FORT MONROUTH NEW JERSEY
SM-D-57314
SHEET 3