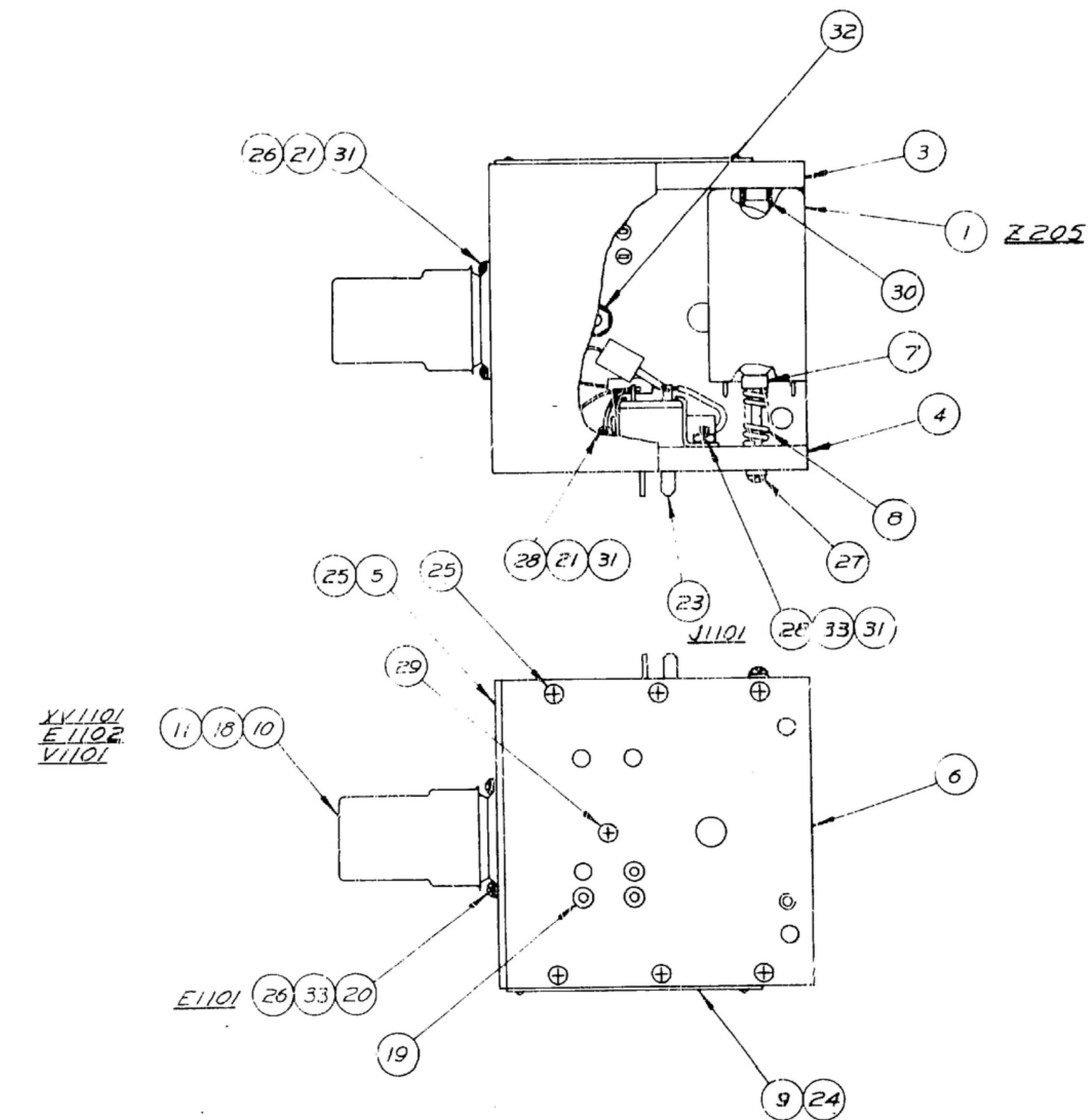
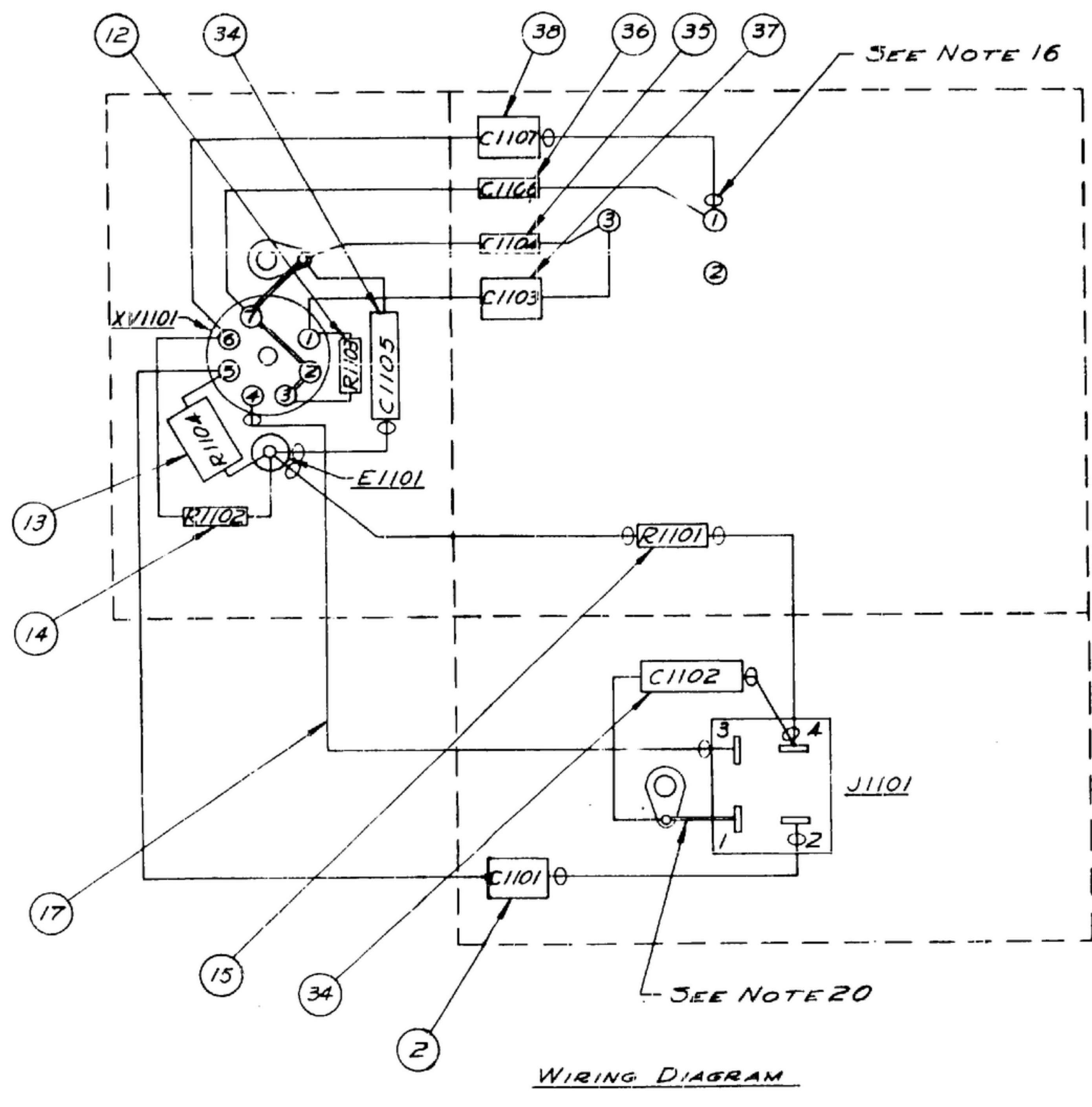
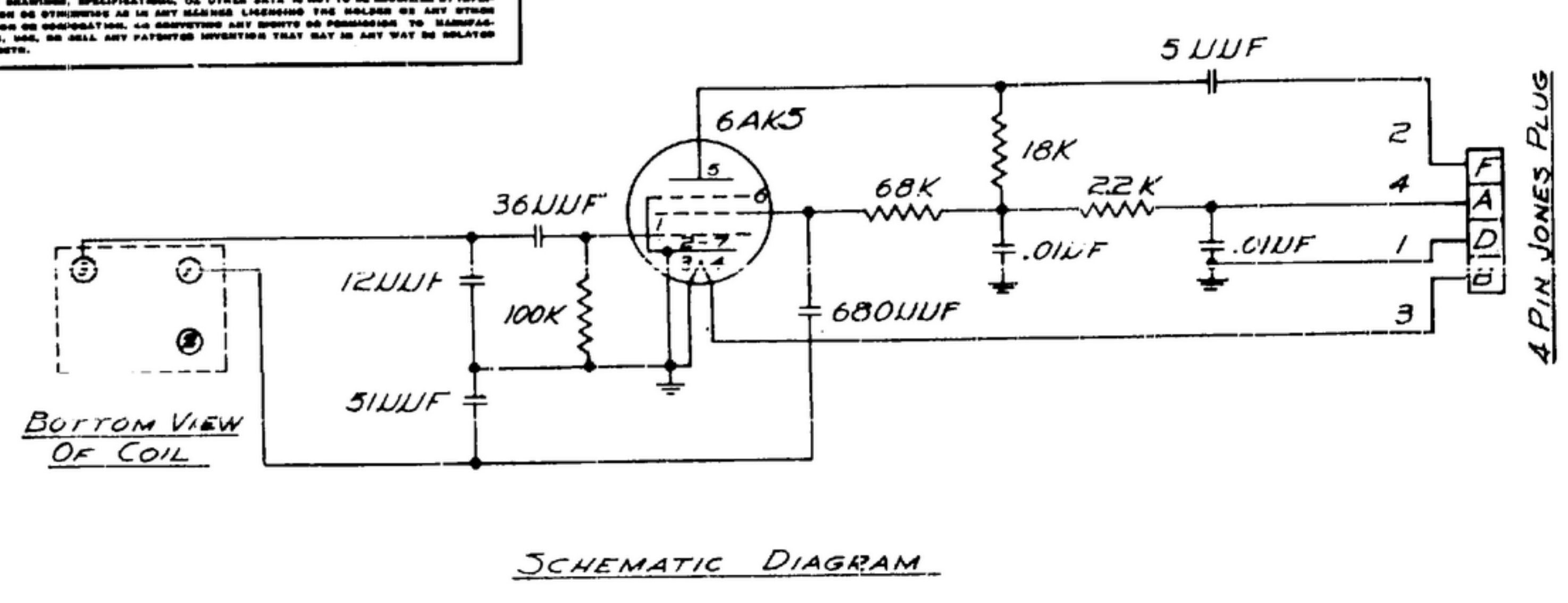


UNLESS OTHERWISE SPECIFIED, DIMENSIONS ARE IN INCHES AND DECIMALS THEREOF ARE TO BE TO NEAREST THOUSAND. DIMENSIONS ARE TO BE TAKEN UNLESS OTHERWISE SPECIFIED TO THE CENTER OF UNLESS OTHERWISE SPECIFIED TO THE SURFACE. DIMENSIONS ARE TO BE TAKEN UNLESS OTHERWISE SPECIFIED TO THE CENTER OF UNLESS OTHERWISE SPECIFIED TO THE SURFACE.

* FOR INFORMATION ONLY, CONTRACTOR MAY AT HIS OPTION DEVIATE FROM THESE PROCESS DETAILS.



- NOTES
1. SHALL BE BROWN TYPE 3R1R-3/5 (7)-R2U1.
 2. SUPPLIED BY GENERAL ELECTRIC CORP., SCHENECTADY, NEW YORK, OR EQUAL.
 3. SUPPLIED BY JEALLECTRO CORP., NEW ROCHELLE, NEW YORK, OR EQUAL.
 4. SUPPLIED BY WHITSO INC., SCHILLER PARK, ILL., OR EQUAL.
 5. SUPPLIED BY RATTON-MACGUYER CO., PROVIDENCE, RHODE ISLAND, OR EQUAL.
 6. SUPPLIED BY BENTLEY HARRIS MFG. CO., CONSHOHOCKEN, PENNSYLVANIA, OR EQUAL.
 7. SUPPLIED BY HOWARD B. JONES CO., CHICAGO, ILL., OR EQUAL.
 8. SUPPLIED BY PARKER KALON CORP., CLIFTON, N.J., OR EQUAL.
 9. SUPPLIED BY PHEOLL MFG. CO., CHICAGO, ILL., OR EQUAL. (PHILLIPS CROSS RECESSED)
 10. SUPPLIED BY BRISTOL CO., WATERBURY, CONN., OR EQUAL. (G SPLINE)
 11. SUPPLIED BY CENTRAL SCREW CO., CHICAGO, ILL., OR EQUAL.
 12. SUPPLIED BY INLAND AUTOMATIC INCL. CO., ILL., OR EQUAL.
 13. SUPPLIED BY SHAKERBROOK INC., CHICAGO, ILL., OR EQUAL.
 14. SUPPLIED BY SPRAGUE ELECTRIC CO., NORTH ADAMS, MASS., OR EQUAL.
 15. SUPPLIED BY CORNELL DUBLIER ELECTRIC CORP., SOUTH PLAINFIELD, N.J., OR EQUAL.
 16. SYMBOL ϕ INDICATES TUBING (22).
 17. ALL SOLDER SHALL BE 3N-50 PER QQ-3-571.
 18. COIL (1) IS SUPPLIED IN POSITION SHOWN WHEN IN USE COIL IS PLUGGED IN. SOCKETS (19) & HELD IN PLACE WITH SCREW (23).
 19. COAT ALL SOLDER CONNECTIONS WITH VARNISH TYPE I PER MIL-V-173.
 20. WIRE (10) IS SHOWN BY A DOUBLE LINE.
 21. SHALL BE TYPE 3 #22 SOFT ANNEALED TIN COATED.
 22. ALL THREADS SHALL BE PER HANDBOOK H2B.

QTY	DESCRIPTION	DATE	FINISHED SIZE	QTY	DATE
38	-23 #1R5T60				
37	-22 #2R25Q36				
36	-21 #2R25Q51				
35	-20 #2R25Q12		MICA		15
34	-19 CAPACITOR #67P10394		PAPER		14
33	-18 WASHER #A INT SHAKE				13
32	-17 1.40X.28X.230				12
31	-16 NUT 1/4 X 3/8				11
30	-15 1/4 DIA X 1/4		OVERALL I.G.		10
29	-14 PAN HD 4-40X.24X.16				
28	-13 FLAT HD 8-32X.24X.16				
27	-12 PAN HD 8-32X.24X.16				
26	-11 BAND HD 8-32X.24X.16				
25	-10 SCREW #8X.24X.16				9
24	-9 DRIVE SCREW		STEEL 3/16 X .053 DIA		8
23	-8 CONNECTOR P.30M-ABW.1				7
22	-7 TUBING #BH8000 No 18				6
21	-6 LUG #3002				5
20	-5 POST #103A-1				4
19	-4 SOCKET #SKT-1		TEFLON		3
18	-3 TUBE #6AK5				2
17	-2 JAN-C-76				1
16	SM-D-33314-1 WIRE MIL-W-3861		COPPER		27
15	RC32GF22J				
14	RC20BF683K				
13	RC20BF.3K				
12	RC20BF104K RESISTOR MIL-R-11				
11	T3102U01 SHIELD				
10	T3102P01 SOCKET JAN-5-20				
9	SM-C-31958-11 NAME PLATE				
8	SM-B-31957 SPRING				
7	SM-B-31956 NUT				
6	SM-B-31951 PLATE				
5	SM-B-31250 TOP				
4	SM-B-31249 PLATE				
3	SM-B-31248 PLATE				
2	SM-C-283226-1 CAPACITOR		MICA		
1	SM-D-249096 COIL ASSY				

UNLESS OTHERWISE SPECIFIED DIMENSIONS ARE IN INCHES TOLERANCES ON FRACTIONS DECIMALS	COLLINS RADIO CO 1541-37658 PH-55-53	TEST OSC. R-390A/URR	DEPARTMENT OF THE ARMY SIGNAL CORPS ENGINEERING LABORATORIES
APPROVED XXX	REVIEWED XXX	R F COIL # 205 8.0-16.0 MC SIG. C INSP. 87292	PORT WORTH NEW JERSEY
DATE AUG 56	SCALE	SM-D-33314	