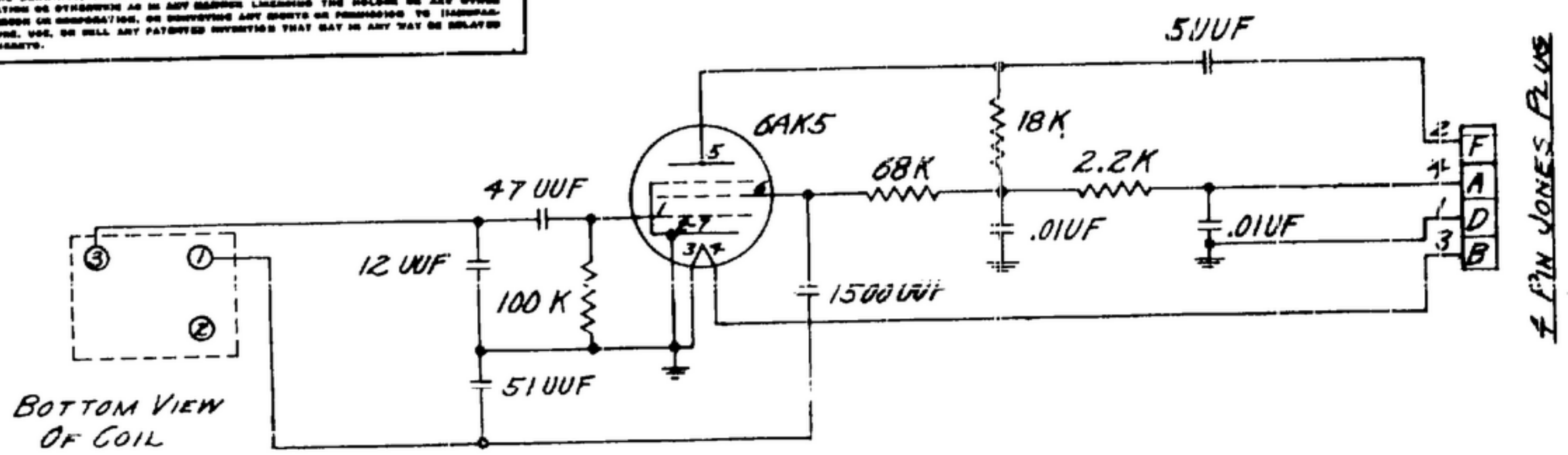
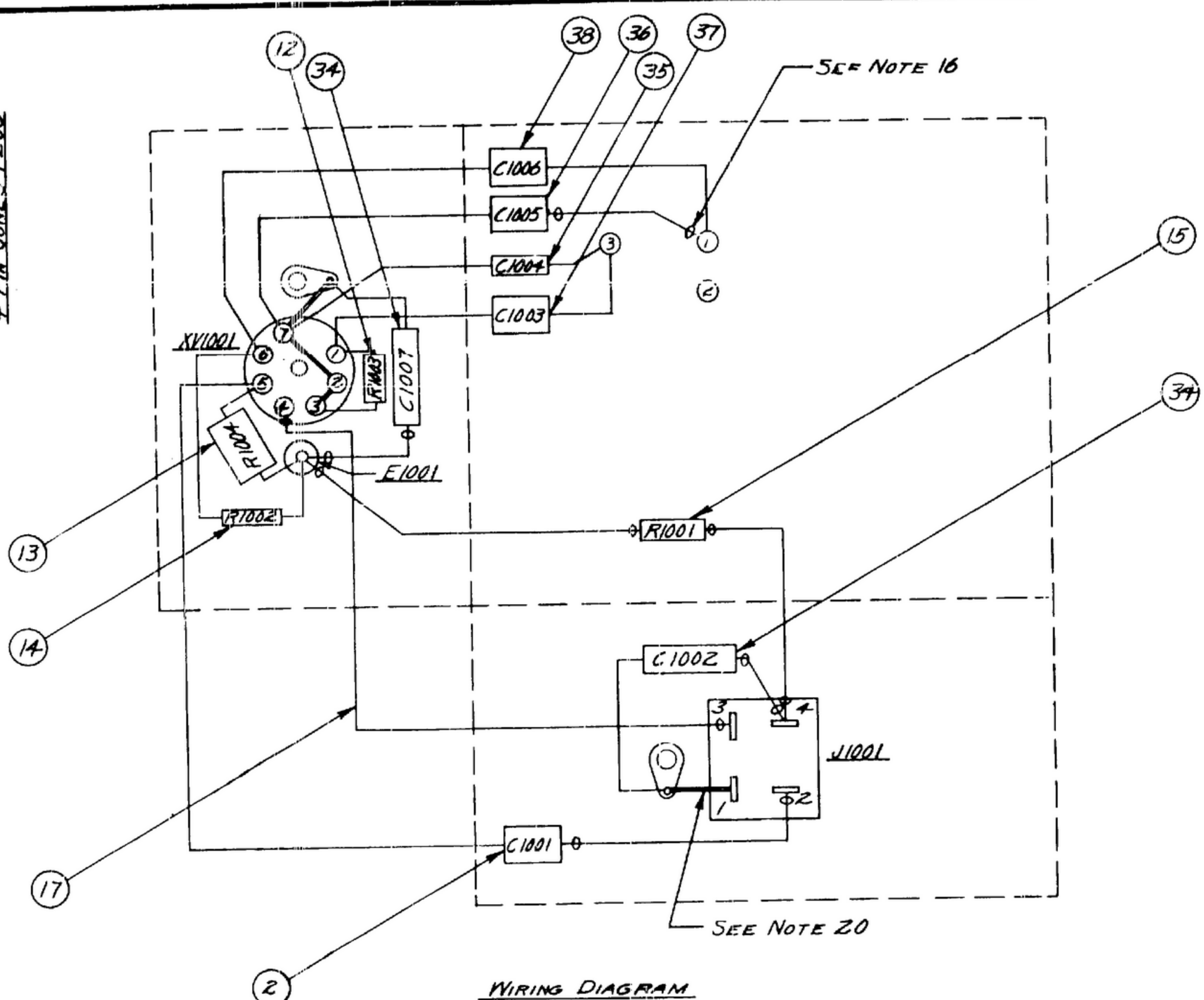


NOTE: THESE REPRESENTATIONS, SPECIFICATIONS, OR OTHER DATA ARE FOR INFORMATION ONLY. CONTRACTOR MAY AT HIS OPTION DEVIATE FROM THESE PROCESS DETAILS.

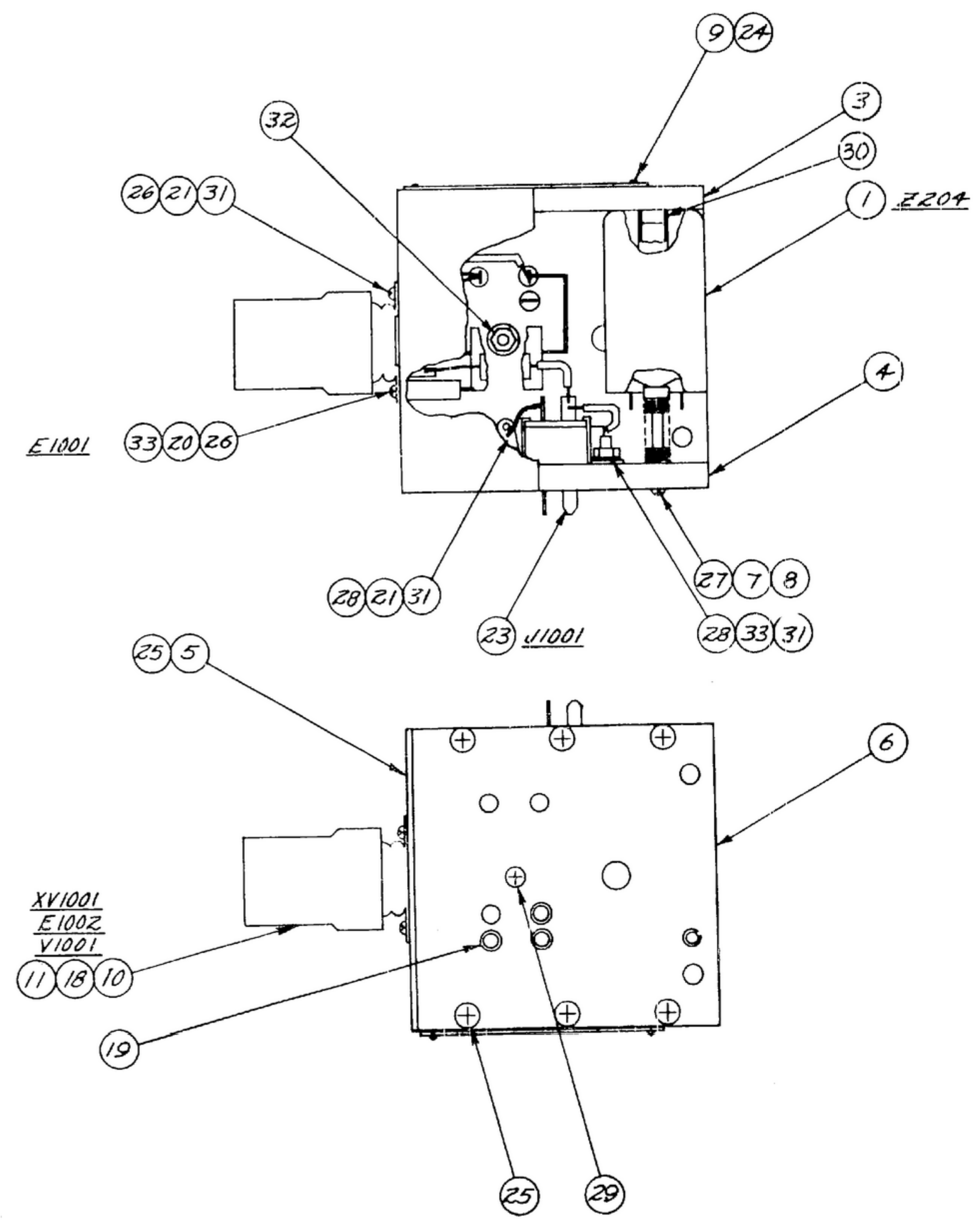
* FOR INFORMATION ONLY. CONTRACTOR MAY AT HIS OPTION DEVIATE FROM THESE PROCESS DETAILS.



SCHEMATIC DIAGRAM



WIRING DIAGRAM



- NOTES:
1. SHALL BE JAN SR18-35 (1)-22 U1.
 2. SUPPLIED BY GENERAL ELECTRIC CORP., SCHENECTADY, NEW YORK, OR EQUAL.
 3. SUPPLIED BY SENELECTRO CORP., NEW ROCHELLE, NEW YORK, OR EQUAL.
 4. SUPPLIED BY WHITSO INC., SCHILLER PARK, ILL., OR EQUAL.
 5. SUPPLIED BY PITTON-MACGUYER CO., PROVIDENCE, RHODE ISLAND, OR EQUAL.
 6. SUPPLIED BY BENTLEY HARRIS MFG. CO., CONSHOHOCKEN, PENNSYLVANIA, OR EQUAL.
 7. SUPPLIED BY HOWARD B. JONES CO., CHICAGO, ILL., OR EQUAL.
 8. SUPPLIED BY PARKER MASON CORP., CLIFTON, N.J., OR EQUAL.
 9. SUPPLIED BY PHOENIX MFG. CO., CHICAGO, ILL., OR EQUAL. (PHILLIPS CROSS RECESSED)
 10. SUPPLIED BY BRISTOL CO., WATERBURY, CONN., OR EQUAL. (6 SPLINE)
 11. SUPPLIED BY CENTRAL SCREW CO., CHICAGO, ILL., OR EQUAL.
 12. SUPPLIED BY INLAND AUTOMATIC INC., OMAHA, NEB., OR EQUAL. (ALSO SECT CAPTIVE)
 13. SUPPLIED BY SHARPPOOF INC., CHICAGO, ILL., OR EQUAL.
 14. SUPPLIED BY SPRAGUE ELECTRIC CO., NORTH ADAMS, MASS., OR EQUAL.
 15. SUPPLIED BY CORNELL DUBLIER ELECTRIC CORP., SOUTH PLAINFIELD, N.J., OR EQUAL.
 16. SYMBOL \oplus INDICATES TUBING (22).
 17. ALL SOLDER SHALL BE SN-50 PER QQ-S-571.
 18. COIL (1) IS SUPPLIED IN POSITION SHOWN. WHEN IN USE COIL IS PLUGGED IN SOCKETS (19) & HELD IN PLACE WITH SCREW (29).
 19. COAT ALL SOLDER CONNECTIONS WITH VARNISH TYPE I PER MIL-V-173.
 20. WIRE (16) IS SHOWN BY A DOUBLE LINE.
 21. SHALL BE TYPE S #22 SOFT ANNEALED TIN COATED.
 22. ALL THREADS SHALL BE PER HANDBOOK H-22.

QTY.	INSTR.	PART NO.	DESCRIPTION	MATL.	FINISHED SIZE	QTY. NOTE
38	1	-23	1R5D15			
37	1	-22	22R5Q41			
36	1	-21	22R5Q51			
35	1	-20	22R5Q12	MICA		15
34	2	-19	CAPACITOR 67P10394	PAPER		14
33	2	-18	WASHER #4 INT. SMKRE			13
32	1	-17	NUT #4-40NC-28X			12
31	3	-16	NUT #4-40NC-28X			11
30	1	-15	SCREW #2-32NC-28X PLAIN HEAD 1/4 LONG			10
29	1	-14	#2-32NC-28X PLAIN HEAD 1/4 LONG			
28	2	-13	#2-32NC-28X PLAIN HEAD 1/4 LONG			
27	1	-12	#2-32NC-28X PLAIN HEAD 1/4 LONG			
26	2	-11	#2-32NC-28X PLAIN HEAD 1/4 LONG			
25	10	-10	SCREW #2-32NC-28X PLAIN HEAD 1/4 LONG			9
24	2	-9	DRIVE SCREW #2-32NC-28X PLAIN HEAD 1/4 LONG	STEEL		8
23	1	-8	CONNECTOR P-304 AB-MI			7
22	AS REQ	-7	TUBING #18 8000 NO. 18			6
21	2	-6	LUG #300Z			5
20	1	-5	POST #103A-1			4
19	3	-4	SOCKET #SKT-1	TEFLON		3
18	1	-3	TUBE #6AK5			2
17		-2	JAN-C-76			1
16	AS REQ	SM-D-33313-1	WIRE MIL-W-3861	COPPER		21
15	1	RC326F22J				
14	1	RC20BF683K				
13	1	RC20BF163K				
12	1	RC20BF14K	RESISTOR	MIL-R-11		
11	1	TS102V01	SHIELD			
10	1	TS102P01	SOCKET	JAN-S-28		
9	1	SM-D-31958-10	NAME PLATE			
8	1	SM-B-31957	SPRING			
7	1	SM-B-31956	NUT			
6	1	SM-B-31251	PLATE			
5	1	SM-B-31250	TOP			
4	1	SM-B-31249	PLATE			
3	1	SM-B-31248	PLATE			
2	1	SM-C-283226-1	CAPACITOR	MICA		
1	1	SM-D-249095	COIL ASSY			

UNLESS OTHERWISE SPECIFIED DIMENSIONS ARE IN INCHES TOLERANCES ON FRACTIONS DECIMALS ANGLES		TEST OSC R-390A/URR RF COIL Z 204 4.0-8.0 MC SIG. C INSP. 57292	DEPARTMENT OF THE ARMY SIGNAL CORPS ENGINEERING LABORATORIES FORT MONMOUTH NEW JERSEY SM-D-33313
REVIEWED XXX	APPROVED [Signature]		
DATE 9 SEPT 56	SCALE	REFERRING TO THIS DRAWING STATE DRAWING NO., APPLICABLE ISSUE SYM-CL, IF ANY, AND DATE.	