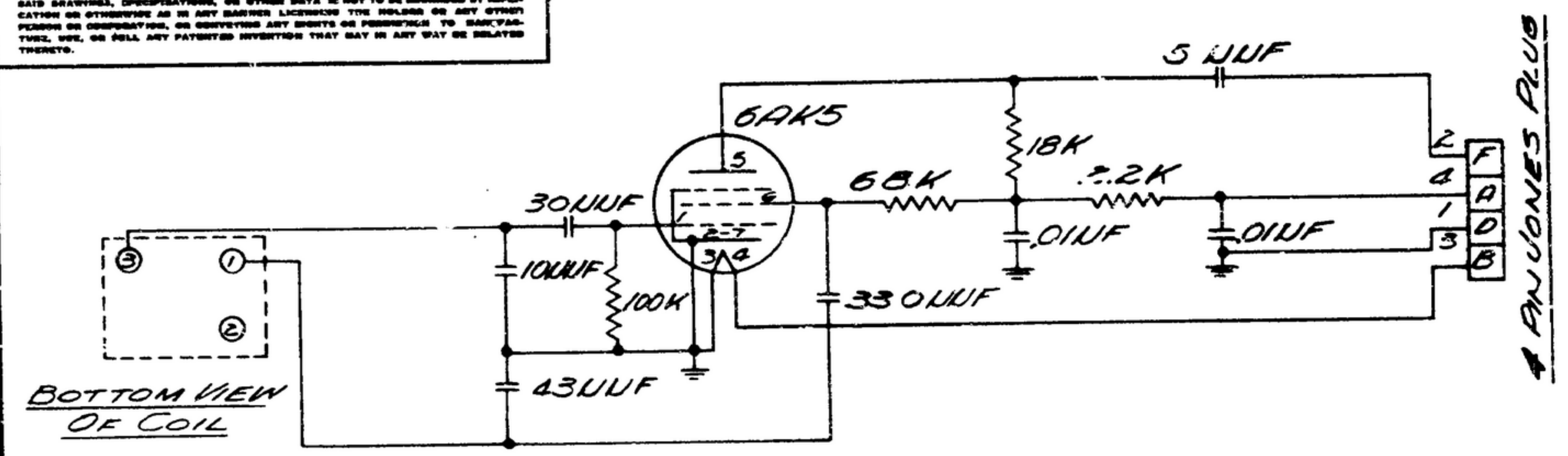
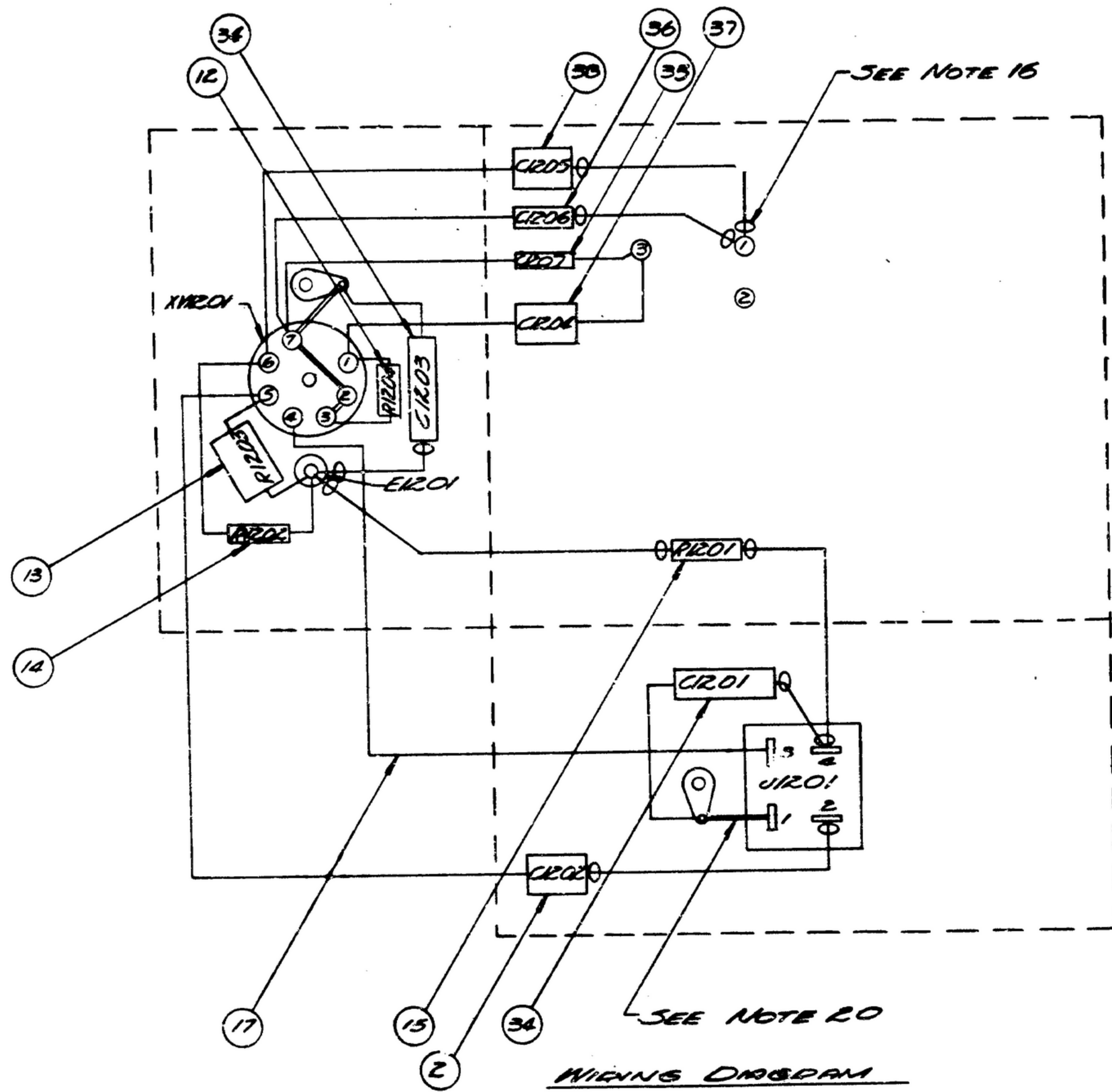


NOTES: WHEN DIFFERENT CATALOG SPECIFICATIONS OR OTHER DATA ARE USED FOR ANY PORTION OF THIS DRAWING IN CONNECTION WITH A DEFENSE RELATED PROJECT, THE CONTRACTOR SHALL BE RESPONSIBLE FOR THE PROPER IDENTIFICATION OF THE PARTS AND THE PROPER IDENTIFICATION OF THE PARTS AND THE PROPER IDENTIFICATION OF THE PARTS...

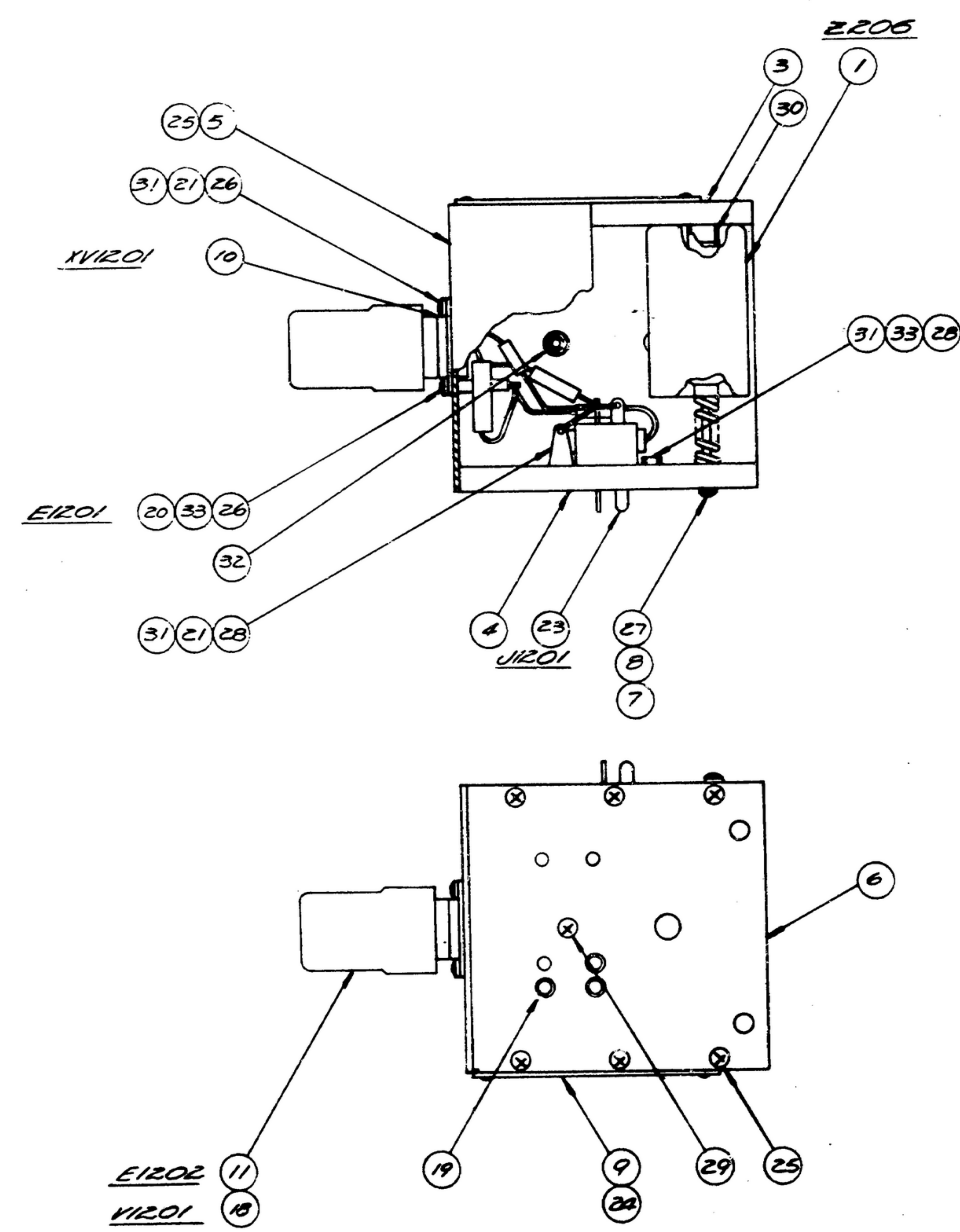
FOR INFORMATION ONLY. CONTRACTOR MAY AT HIS OPTION DEVIATE FROM THESE PROCESS DETAILS.



SCHEMATIC DIAGRAM



WIRING DIAGRAM



- NOTES**
1. SHALL BE TYPE SP1D-345(7)-22111 BRN.
 2. SUPPLIED BY GENERAL ELECTRIC CORP. SCHEMATICALLY OR EQUAL.
 3. SUPPLIED BY SELECTED COILS NEW DOGHELLA, ILL. OR EQUAL.
 4. SUPPLIED BY WATSON INC. SCHILLER PARK, ILLINOIS, OR EQUAL.
 5. SUPPLIED BY DOTSON MFG. CO. BUTER CO, ILLINOIS, OR EQUAL.
 6. SUPPLIED BY BENTLEY HARRIS MFG CO, CONSHOHOCKEN, PA. OR EQUAL.
 7. SUPPLIED BY HOWARD B JONES, CHICAGO, ILL. OR EQUAL.
 8. SUPPLIED BY DORNER ALCON CO. CLIFTON, N.J. OR EQUAL.
 9. SUPPLIED BY PHOENIX MFG CO, CHICAGO, ILL. OR EQUAL (PHILLIPS CROSS RECESSED).
 10. SUPPLIED BY BOLSTER CO. WATERBURY, CONN. OR EQUAL (8 JOLINE).
 11. SUPPLIED BY CENTRAL JOLINE CO, CHICAGO, ILL. OR EQUAL.
 12. SUPPLIED BY INLAND AUTOMATIC INC, OMAHA, NEB. OR EQUAL.
 13. (INSERT CAPTIVE)
 14. SUPPLIED BY WATKINS INC, CHICAGO, ILL. OR EQUAL.
 15. SUPPLIED BY SPARGUE ELECTRIC CO, NORTH ROADS, MASS. OR EQUAL.
 16. SUPPLIED BY CORNELL-DUBILIER ELECTRIC CORP, SOUTH PLAINFIELD, NJ. OR EQUAL.
 17. SYMBOL ∇ INDICATES TUBING (R2).
 18. ALL SOLDER SHALL BE SN-30 PBD 60-5-57.
 19. COIL (11) IS SUPPLIED IN POSITION SHOWN. WHEN IN USE COIL IS DEBUSS IN SOLARIS NO. 1 FIELD IN PLACE WITH SCREW (29).
 20. COAT ALL SOLDER CONNECTIONS WITH VARNISH TYPE 1 PER MILITARY.
 21. WIRE (16) IS SHOWN BY A DOUBLE LINE.
 22. SHALL BE TYPE 5 NO. 22 SOFT ANNEALED IN COATED.
 23. ALL THREAD SHALL BE PER HANDBOOK H2B.

QTY	DESC	REF ID	DESCRIPTION	QTY	FINISHED QTY	QTY	DATE
38	1	-23	#5RST33				
57	1	-22	#22R303				
56	1	-21	#22R5043				
35	1	-20	#22R501 MICA			15	
34	1	-19	CAPACITOR #27A0394 PAPER			14	
33	2	-18	WASHED #4IN SWIRE			13	
32	1	-17	#22R502			12	
31	3	-16	NUT #10NC-28 X 3/8			11	
30	1	-15	SCREW #4 X 1/2 IN			10	
29	1	-14	SCREW #4 X 1/2 IN				
28	2	-13	SCREW #4 X 1/2 IN				
27	1	-12	SCREW #4 X 1/2 IN				
26	2	-11	SCREW #4 X 1/2 IN				
25	10	-10	SCREW #4 X 1/2 IN			9	
24	2	-9	SCREW #4 X 1/2 IN	STEEL	3/16 X .0800	8	
23	1	-8	CONNECTOR #27A0394			7	
22	1	-7	TUBING #4 X .00016 IN			6	
21	2	-6	LUS #3002			5	
20	1	-5	POST #10SA-1			4	
19	3	-4	SOCKET #5AT-1	REFLON		3	
18	1	-3	TUBE #8AK5			2	
17	1	-2	URN C-7B			1	
16	23	-1	SA-P-13207	MACE	NAL-#4561	COATED	21
15	1		RESISTOR				
14	1		RESISTOR				
13	1		RESISTOR				
12	1		RESISTOR				
11	1		SHIELD				
10	1		SOCKET JAN 5-28				
9	1		NAMEPLATE				
8	1		SCREW				
7	1		NUT				
6	1		PLATE				
5	1		PLATE				
4	1		PLATE				
3	1		PLATE				
2	1		CAPACITOR	MICA			
1	1		CON. BSSY				

UNLESS OTHERWISE SPECIFIED DIMENSIONS ARE IN INCHES TOLERANCES ON FRACTIONS DECIMALS ALLOWED

REVIEWED XXX
 DATE 10/1/56

APPLICATION

TEST. OSC. R-390A. URR
 R.F. COM. E 208
 18.0-32.0 MC
 SFC 6.100P
 87292

DEPARTMENT OF THE ARMY
 SIGNAL CORPS ENGINEERING
 LABORATORIES
 FORT MONMOUTH NEW JERSEY

SM-D-53207