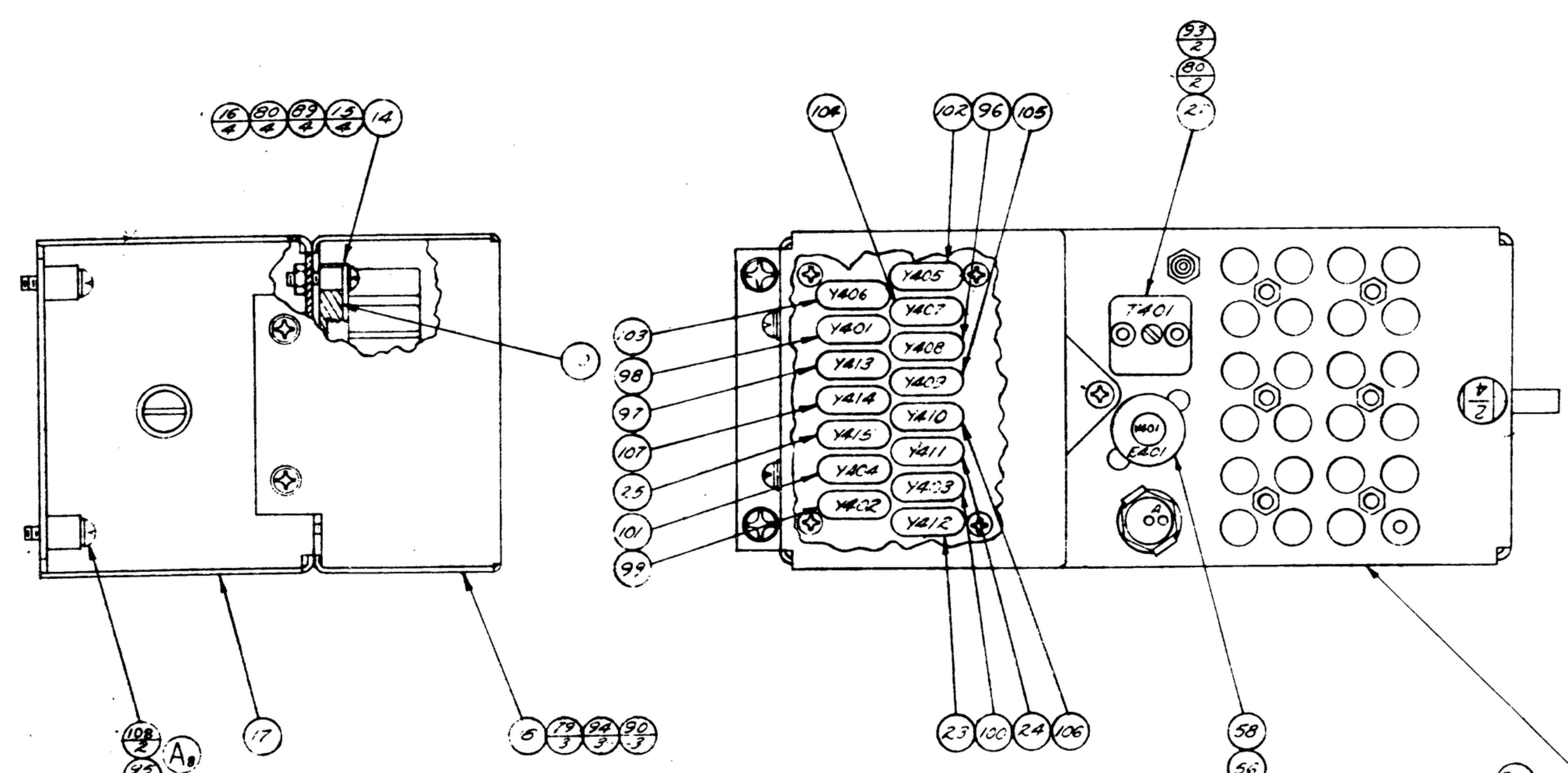
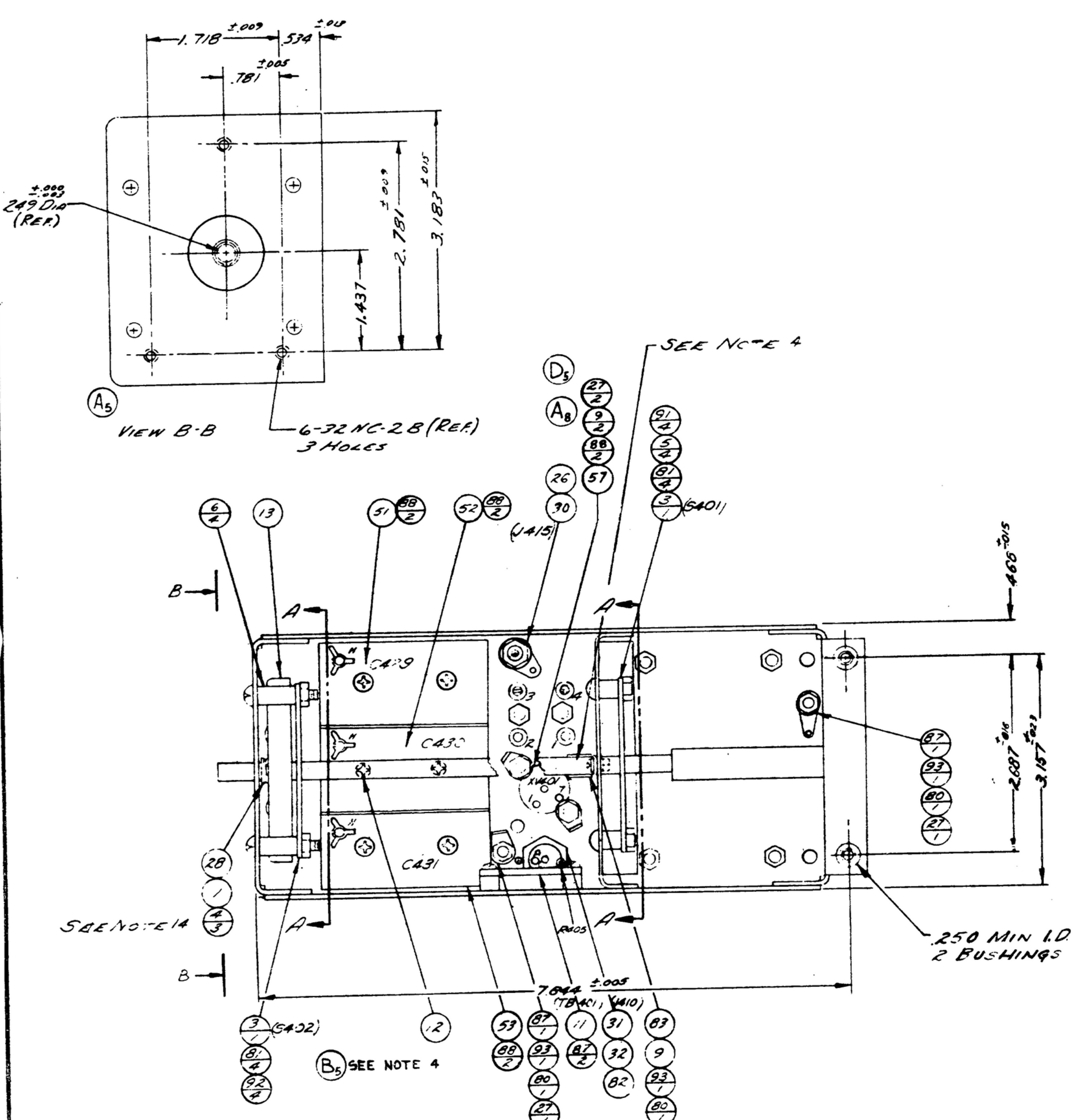


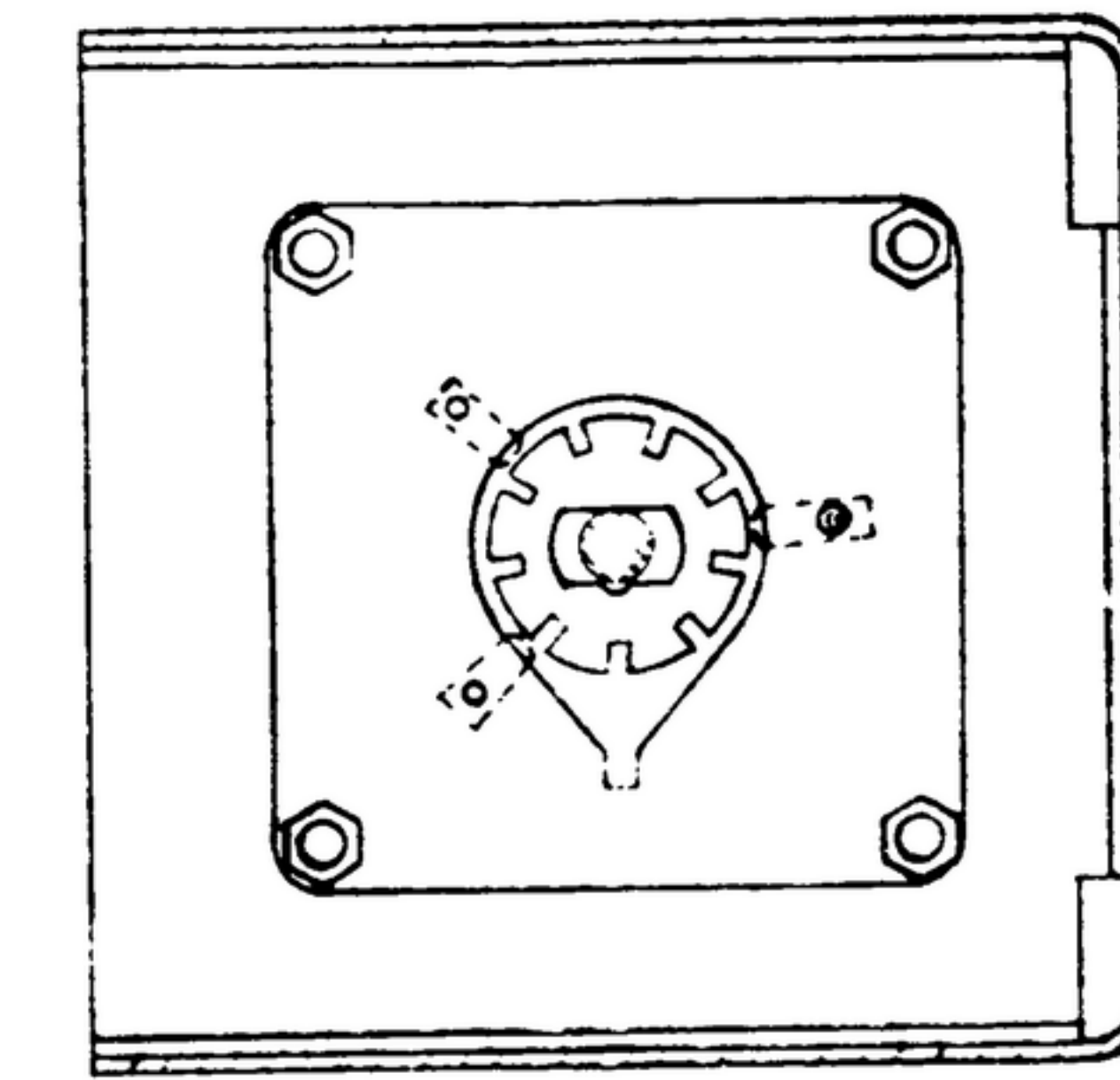
THIS DRAWING IS THE PROPERTY OF THE U.S. GOVERNMENT AND IS TO BE USED FOR THE PURPOSES STATED THEREIN. IT IS TO BE REPRODUCED, TRANSMITTED, OR IN ANY MANNER DISCLOSED TO THE PUBLIC OR TO ANY OTHER PERSON OR ORGANIZATION WITHOUT THE WRITTEN PERMISSION OF THE U.S. GOVERNMENT. THIS DRAWING IS TO BE KEPT IN A SAFE PLACE AND IS TO BE RETURNED TO THE U.S. GOVERNMENT AT THE END OF THE PROJECT.

FOR INFORMATION ONLY CONTRACTOR MAY AT HIS OPTION DEVIATE FROM THESE PROCESS DETAILS

REVISE APPROVAL	SYM	DESCRIPTION	DATE	APPROVAL
A₁₁	A₁₁	SEE SHEET 1 FOR REVISIONS	4 NOV 59	42428-PC-59-AI-51 REV'D
B₅	B₅	SEE SHEET 1 FOR REVISIONS	10 DEC 59	42428-PC-59 REV'D
C₃	C₃	SEE SHEET 1 FOR REVISIONS	22 MAR 60	42428-PC-59 REV'D
D₅	D₅	SEE SHEET 1 FOR REVISIONS D ₅ -ITEM #9 WAS #80	23 AUG 60	42428-PC-59 REV'D
E₃	E₃	SEE SHEET 1 FOR REVISIONS	5 DEC 60	42428-PC-59 REV'D
F₁	F₁	F ₁ -ADDED "ORDER NO." TO MARKING NOTE	25 APR 61	42428-PC-59 REV'D
G₁	G₁	SEE SHEET 1 FOR REVISIONS	10 MAY 61	42428-PC-59 REV'D
H ₄	H ₄	(1),(2) SEE SHEET 1, (3),(4) SEE SHEET 3	30 MAR 1965	1584 PK 01 REV'D
J	J	SEE SHEET 3 FOR REVS	19 AUG 66	6-00189 REV'D



* STAMP OR DECAL DESCRIPTION PART No., ORDER No., SERIAL No. ON THIS SIDE OF CHASSIS IN THIS AREA SEE NOTE 11.



SECTION A-A
2 PLACES
SHOWN IN POSITION

LIST OF MATERIAL

COLLING PART NO.	ALIAS	QTY	PART NO.	DESCRIPTION	UNIT	DATE

DRAWN	CHECKED	APPROVED	COLLING PART NO.	1421A-PH-51-95
BC	Rm		SIGNAL CORPS	
REVIEWED	PML		APPROVED BY	PME
			DATE	30 DEC '55

UNLESS OTHERWISE SPECIFIED:
 DECIMAL DIMENSIONS INCLUDING HOLE SIZES MAY VARY ±.005
 FRACTIONAL DIMENSIONS INCLUDING HOLE SIZES MAY VARY ±.005
 MACHINED ANGLES MAY VARY ±.5°
 BROKEN ANGLES MAY VARY ±.25°
 ± BETWEEN ANY DIAMETERS ON THE SAME CENTERLINE
 SHALL NOT EXCEED .010 TOTAL INDICATOR READING
 DIMENSIONS ARE FINISH DIMENSIONS INCLUDING APPLIED
 ±.005 AND ARE GIVEN IN INCHES

APPLICATION	NEST ASSY	USED ON

DEPARTMENT OF THE ARMY
 SIGNAL CORPS ENGINEERING
 LABORATORIES
 FORT MONMOUTH NEW JERSEY
SM-D-249007
SHEET 2

WHEN REFERRING TO THIS DRAWING STATE DRAWING NO., APPLICABLE ISSUE SYMBOL IF ANY AND DATE

UNLESS OTHERWISE SPECIFIED, DIMENSIONS ARE IN INCHES AND FRACTIONS. DIMENSIONS IN PARENTHESES ARE FOR INFORMATION ONLY. CONTRACTOR MAY AT HIS OPTION DEVIATE FROM THESE PROCESS DETAILS.

FOR INFORMATION ONLY. CONTRACTOR MAY AT HIS OPTION DEVIATE FROM THESE PROCESS DETAILS.

FOR INFORMATION ONLY. CONTRACTOR MAY AT HIS OPTION DEVIATE FROM THESE PROCESS DETAILS.

REVISIONS				REVISIONS			
SYMBOL	DATE	DESCRIPTION	APPROVAL	SYMBOL	DATE	DESCRIPTION	APPROVAL
D ₅	12 MAR 60	SEE SHEET 182 FOR REVISIONS	A11	A11	19 MAR 59	SEE SHEET 1 FOR REVISIONS	A11
E ₃	12 DEC 60	SEE SHEET 1 FOR REVISIONS	B ₅	B ₅	19 DEC 59	SEE SHEET 1 FOR REVISIONS	B ₅
F ₁	15 APR 61	SEE SHEET 2 FOR REVISIONS	C ₃	C ₃	22 MAR 60	SEE SHEET 1 FOR REVISIONS	C ₃
G ₁	10 MAY 61	SEE SHEET 1 FOR REVISIONS	H ₄	H ₄			
		(1),(2) SEE SHEET 1; (3) WAS WMT, BLK, ADDED WIRE FROM 3 TO 5					
J		ADDED ITEM 21 TO WIRE FROM 3 TO 5 TERM 28 & 31.					

TABLE I
WIRE ROUTING TABLE

WIRE NO.	COLOR	FROM	TO	TERMINAL NO.
1	TAN	3402-11	C430-A2	77
2	PINK	-12	C431-B2	75
3	MAN	-13	C431-A2	78
4	LT GRN	-14	C429-D2	76
5	WHT	-15	C429-C2	73
6	CLR	-16	C430-D2	72
7	BLK	-17	C430-C2	69
8	BRN	-18	C431-D2	65
9	RED	-19	C431-C2	66
10	ORN	-20	C429-F2	67
11	YEL	-21	C429-E2	68
12	GRN	-22	C430-F2	69
13	BLU	-23	C430-E2	70
14	VLT	-24	C431-F2	71
15	GRY	-25	C431-E2	72
16	BLU	POST BMT	J401-2	67
17	BLK	-0	C430-C2	69
18	BRN	-1	C431-D2	65
19	RED	-2	C431-C2	66
20	ORN	-3	C429-F2	67
21	YEL	-4	C429-E2	68
22	GRN	-5	C430-F2	69
23	BLU	-6	C430-E2	70
24	VLT	-7	C431-F2	71
25	GRY	-8	C429-E2	72
26	WHT	-9	C429-A2	79
27	CLR	-10	C430-B2	74
28	WHT, BRN, RED	T8401-1	XV401-6	37
29	WHT, BRN	J410-F	J416	35
30	WHT, BRN	J410-E	J416	35
31	WHT	J410-D	GRD LUG BY J416	33
32	WHT	J410-N	GRD LUG BY T8401	35
33	WHT, BLK	T8401-2	XV401-3	34
34	WHT, RED	T8401-4	T401-1	36
35	BRN	5401-1	BOARD ASSY-16	65
36	RED	-2	5401-B	66
37	ORN	-3	5401-E2	67
38	ORN	-3	BOARD ASSY-15	67
39	WHT	BOARD ASSY-24	GRD LUG BY J416	73
40	YEL	5401-4	5401-2	68
41	GRN	-5	-22	69
42	BLU	-6	-10	70
43	VLT	-7	-15	71
44	RED	-8	-19	66
45	YEL	-9	-21	68
46	BLU	-10	-23	70
47	GRN	-11	-25	72
48	CLR	-12	-27	74
49	TAN	-13	-29	77
50	PINK	-14	-31	75
51	VLT	-15	-24	71
52	MAN	-16	BOARD ASSY-18	78
53	BLK	-17	BOARD ASSY-11	64
54	BLK	-17	5401-0	69
55	BRN	-18	5401-1	65
56	GRN	-22	BONED ASSY-10	69
57	RED	-30	5401-2	66
58	BRN	BOARD ASSY-1	J417	65
59	WHT	BOARD ASSY-2	GRD LUG BY J416	73
60	GRN	XV401-1	5401-B1, B2, B3, B4, B5	62

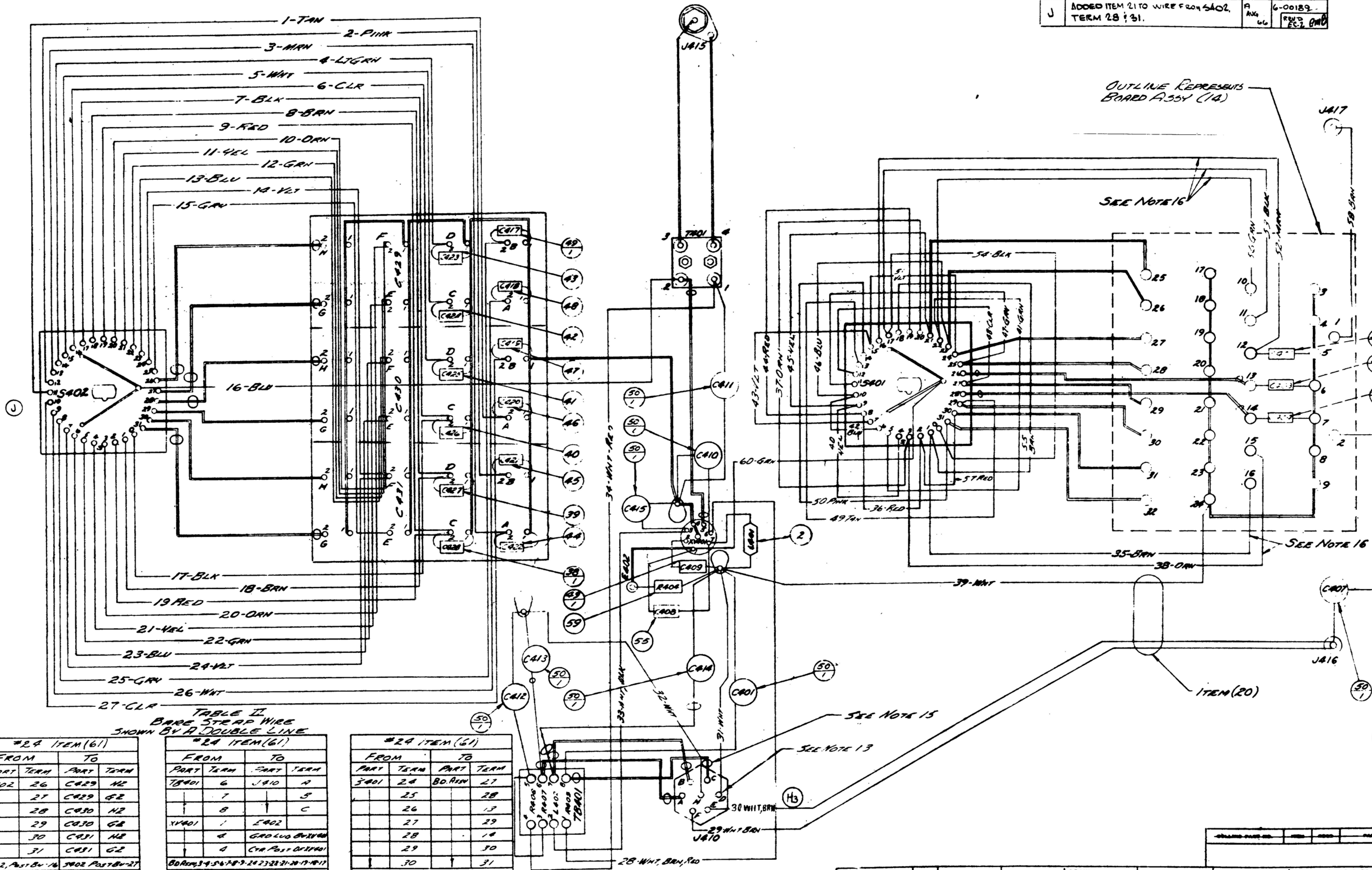


TABLE II
BARE STRAP WIRE SHOWN BY A DOUBLE LINE

#24 ITEM (61)			
FROM	TO	PART	TERM
3402	26	C429	H2
	27	C429	G2
	28	C430	H2
	29	C430	G2
	30	C431	H2
	31	C431	G2

#24 ITEM (61)			
FROM	TO	PART	TERM
T8401	6	J410	A
	7		5
	8		C
XV401	1	5402	
	4	GRD LUG BY J416	
	4	GRD LUG BY J416	

#22 ITEM (60)			
FROM	TO	PART	TERM
3401	24	BO ASSY	27
	25		28
	26		13
	27		29
	28		14
	29		30
	30		31

LIST OF MATERIAL

DEPARTMENT OF THE ARMY
SIGNAL CORPS ENGINEERING
LABORATORIES
FORT MONMOUTH, NEW JERSEY

SM-D-24900T
SHEET 3

OSCILLATOR ASSY - XTAL (WIRING)

DATE 30 DEC 55 SCALE 1/1

APPROVED HLY PME

REVIEWED PME

SIGNAL CORPS

14214-PH-51-93

APPROVED BG

CHECKED BGM

DRAWN BG

UNLESS OTHERWISE SPECIFIED: DIMENSIONS INCLUDING HOLE SIZES MAY VARY ± .005 FRACTIONAL DIMENSIONS INCLUDING HOLE SIZES MAY VARY ± .010 ROUNDED ANGLES MAY VARY ± .010 SQUARE ANGLES MAY VARY ± .010 BOREN ANGLES MAY VARY ± .010 ACCURACY BETWEEN ANY DIMENSIONS ON THE SAME CENTERLINE SHALL NOT EXCEED .005 TOTAL INDICATOR READING ALL DIMENSIONS ARE FINISH DIMENSIONS INCLUDING APPLIED FINISH AND ARE GIVEN IN INCHES

APPLICATION

558-0433-004

SM-D-24900T

SC DL 148774

REVISIONS

DATE 30 DEC 55

SCALE 1/1