

EQUIP. TYPE: *559-0425* EXP. NO.

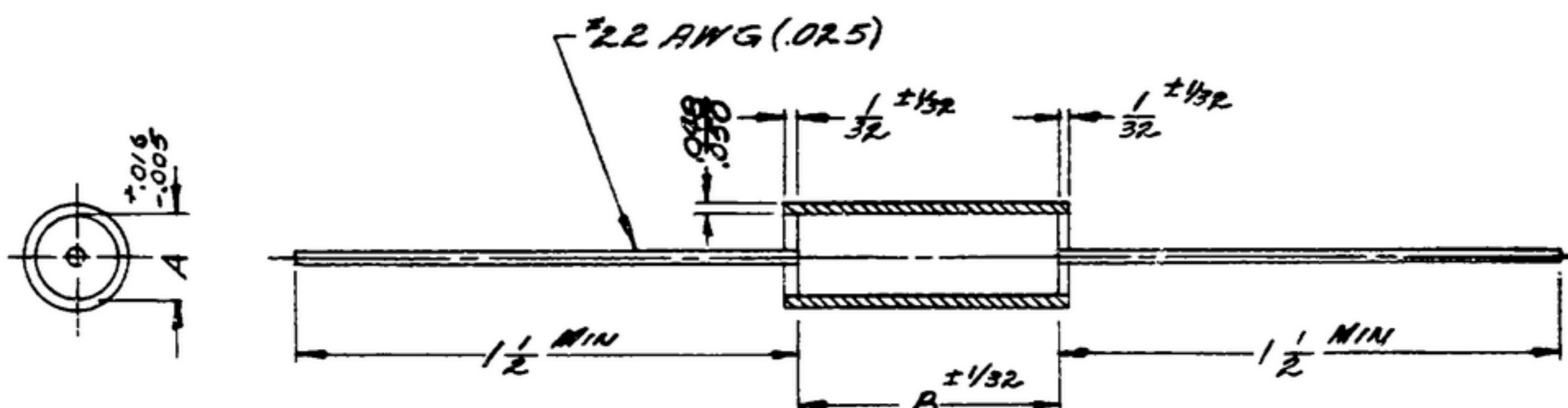
*Coll. 559-0425, 559-0426, 559-0427, 559-0428*

NOTES: WHEN GOVERNMENT SPECIFICATIONS, OR OTHER DATA ARE USED FOR ANY PURPOSE OTHER THAN IN CONNECTION WITH A SPECIFICALLY RELATED SYSTEM, THE UNITED STATES GOVERNMENT THEREBY ASSUMES NO RESPONSIBILITY FOR ANY OPERATIONAL QUALIFICATION, AND THE FACT THAT THE GOVERNMENT MAY HAVE PERMITTED, PROVIDED, OR IN ANY WAY SUPPLIED THE SAID SPECIFICATIONS, OR OTHER DATA IS NOT TO BE CONSIDERED BY SUPPLIERS OR CONTRACTORS AS AN ENDORSEMENT OF THE QUALITY OF ANY OTHER PRODUCT OR OPERATION, OR AS CONVEYING ANY RIGHTS OR PRIVILEGES TO MANUFACTURE, USE, OR SELL ANY PATENTED INVENTION THAT MAY IN ANY WAY BE RELATED THERETO.

THIS PROCEDURE HAS BEEN FORWARDED BY THE DEPARTMENT AND MAY BE MODIFIED AND USED IN CONNECTION WITH ANY GOVERNMENT PROCUREMENT OR MAINTENANCE OPERATION.

\*FOR INFORMATION ONLY. CONTRACTOR MAY AT HIS OPTION DEVIATE FROM THESE PROCESS DETAILS.

REVISIONS			
SYM	DESCRIPTION	DATE	APPROVAL



COLLINS PART NUMBER	DASH NO.	MFR'S PART NO.	CAPACITY LIF	DC WV	DIMENSIONS A B	
559 0425 003	SM-C283241-1	96P10401 SA	.10	100	.312	7/8
559 0427 003		2 96P10303 SA	.01	300	.235	3/4
559 0428 003		3 96P33303 SA	.033	300	.312	7/8
559 0426 003		4 96P10402 SA	.10	200	.400	7/8

NOTES:

1. PART MAY BE SUPPLIED BY SPRAGUE ELECTRIC CO., NORTH ADAMS, MASS., OR EQUAL, PROVIDING IT MEETS THE FOLLOWING REQUIREMENTS AND DIMENSIONS SHOWN.

DESCRIPTION: FIXED PAPER DIELECTRIC CAPACITOR WITH HIGH-TEMPERATURE IMPREGNANT, HERMETICALLY SEALED IN A TUBULAR METALLIC, NON-MAGNETIC CASE, IN ACCORDANCE WITH SPEC MIL-C-25 WITH EXCEPTIONS AS INDICATED.

NON-APPLICABLE PARAGRAPHS MIL-C-25: 1.2 EXCEPT TABLE III; 3.1; 3.18; 4.5 EXCEPT TABLE XI AND 6.2. PARAGRAPH 4.5 CHANGE THE WORD GOVERNMENT TO MANUFACTURER WHEREVER IT APPEARS. IN ADDITION TO THE TESTS IN PARAGRAPH 4.6 THE FOLLOWING TEST SHALL BE PERFORMED: WRAP THE UNITS (OVER SLEEVING) WITH NUMBER 22 STRAP WIRE; SUSPEND THE CAPACITORS HORIZONTALLY BY THEIR LEADS AND HANG A ONE POUND WEIGHT FROM THE STRAP WIRE. USING THE CAPACITOR CASE AS ONE TERMINAL AND THE STRAP WIRE AS THE OTHER, THE SLEEVING SHALL WITHSTAND 1000 VOLTS RMS AT THE END OF AND 5 HOURS AFTER REMOVAL FROM 168 HOURS AT AN AMBIENT TEMPERATURE OF 125°C.

CAPACITY TOLERANCE: ±20%

CIRCUIT: BOTH ENDS FLOATING

CHARACTERISTIC: K, EXCEPT INSULATION RESISTANCE AND CAPACITY CHANGE WHICH SHALL BE AS FOLLOWS:

MEGOMMS TIMES MICROFARADS:	
AT 25°C (77°F)	4700
AT HIGH TEST TEMPERATURE	20
INSULATION RESISTANCE IN MEGOMMS	
AT 25°C (77°F)	10,000
AT 85°C	1,000
AT HIGH TEST TEMPERATURE	350
CAPACITANCE CHANGE IN PERCENT AT LOW AMBIENT TEST TEMPERATURE FROM VALUE AT 25°C (77°F)	8.5
LIFE-TEST DIRECT VOLTAGE IN PERCENT OF DIRECT VOLTAGE RATING AT 40°C (104°F)	140

\*When Part No. Appears As 559-0425-9-3, MILITARY SOURCE INSPECTION IS REQUIRED.

COLLINS PART NO.	ITEM	REQD	PART NO.	DESCRIPTION	DATE	MATL SPEC
------------------	------	------	----------	-------------	------	-----------

LIST OF MATERIAL

COLLINS PART NO. 559-0425-9-3

COLLINS NO.	QTY	NEXT ASSY	USED ON
555 0364 005	4	SM-E 24908	
558 0354 002	2	SM-B 24908	
558 0340 004	1	SM-D 248801	
558 0335 003	5	SM-C 248906	SCDL 248775

DRAWN	CHECKED	APPROVED
D. WRIGHT	GG	

UNLESS OTHERWISE SPECIFIED:  
 DECIMAL DIMENSIONS INCLUDING HOLE SIZES MAY VARY ±.005  
 FRACTIONAL DIMENSIONS INCLUDING HOLE SIZES MAY VARY ±1/64  
 MACHINED ANGLES MAY VARY ±1°  
 BREARED ANGLES MAY VARY ±25°  
 BROKEN ANGLES MAY VARY ±1°  
 ECCENTRICITY BETWEEN ANY DIAMETERS ON THE SAME CENTERLINE SHALL NOT EXCEED .010 TOTAL INDICATOR READING.  
 ALL DIMENSIONS ARE FINISH DIMENSIONS INCLUDING APPLIED FINISH AND ARE GIVEN IN INCHES.

COLLINS-RADIO CO.	DATE
1421A-PH-51-93	
SIGNAL CORPS	
REVIEWED PME	
APPROVED HLY	
PME	
DATE 28 APR 58	SCALE 2/1

DEPARTMENT OF THE ARMY SIGNAL CORPS ENGINEERING LABORATORIES
FORT MONMOUTH NEW JERSEY
SM-C283241