

EQUIP. TYPE R390A/JRR EXP. NO.

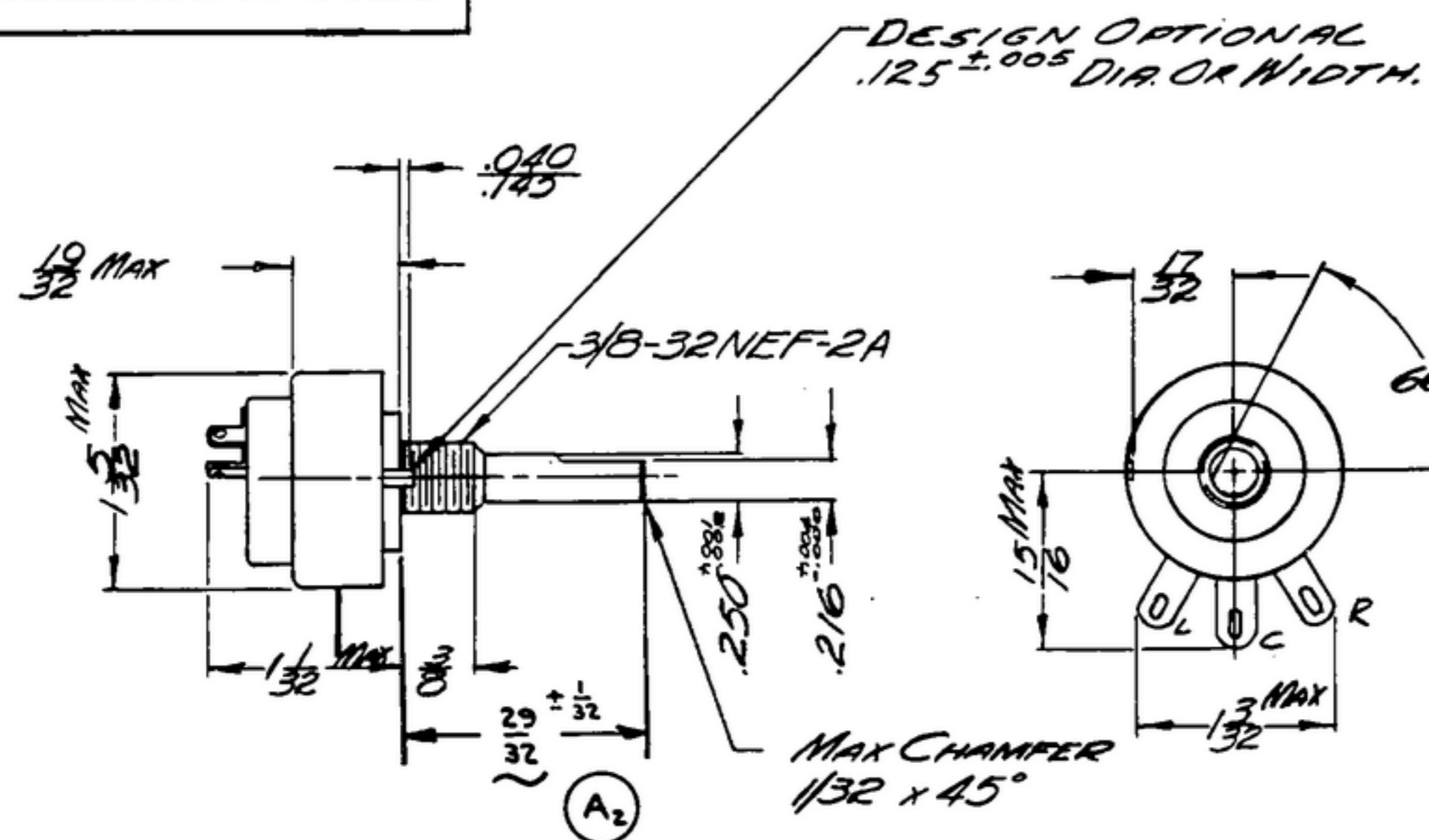
COL. 580 046400

NOTICE: WHEN GOVERNMENT DRAWINGS, SPECIFICATIONS, OR OTHER DATA ARE USED FOR ANY PURPOSE OTHER THAN IN CONNECTION WITH A DEFINITELY RELATED GOVERNMENT PROCUREMENT OPERATION, THE UNITED STATES GOVERNMENT THEREBY INCURS NO RESPONSIBILITY FOR ANY MISAPPLICATION WHATSOEVER AND THE FACT THAT THE GOVERNMENT MAY HAVE FORMULATED, PROVIDED, OR IN ANY WAY SUPPLIED THE SAID DRAWINGS, SPECIFICATIONS, OR OTHER DATA IS NOT TO BE REGARDED AS IMPLICATION ON OTHERWISE AS IN ANY MANNER LICENSING THE HOLDER OR ANY OTHER PERSON OR CORPORATION, OR CONFERRING ANY RIGHTS OR PERMISSION TO REPRODUCE, COPY, USE, OR SELL ANY PATENTED INVENTION THAT MAY IN ANY WAY BE RELATED THEREBY.

THIS DOCUMENT HAS BEEN PURCHASED BY THE GOVERNMENT AND MAY BE REPRODUCED AND USED IN CONNECTION WITH ANY GOVERNMENT PROCUREMENT OR MAINTENANCE OPERATION.

* FOR INFORMATION ONLY. CONTRACTOR MAY AT HIS OPTION DEVIATE FROM THESE PROCESS DETAILS.

SWE APPROVAL		REVISIONS			
SYM	PR10042/11	SYM	DESCRIPTION	DATE	APPROVAL
A ₂		A ₁	MIL-R-94 WAS "JAN-R-94"	13 NOV 59	42428-PC 59-A1-51 REV'D PME
B ₂	CA 84682	B ₂	B ₁ 309° TO 320° WAS 314° ± 6° B ₂ 330° TO 340° WAS 334° ± 4° B ₂ THREE 0.032" DIA (#20AWG) WIRE WAS 0.064" DIA (#14AWG)	23 FEB 60	42428-PC 59 REV'D PME



PARTS ARE SHOWN IN EXTREME COUNTER-CLOCKWISE POSITION.

	RAA CODE	A-F	CHI-TEL
LINEAR	LIN	U	STAND

RESISTANCE	RESIS	SWITCH	RMA TAPER
OHMS	TOL	TYPE	CODE
500,000	±20%	SPDT	LIN

NOTES:

- PART MAY BE TYPE JS, AS SUPPLIED BY ALLEN BRADLEY CO., MILWAUKEE, WIS., OR EQUAL, PROVIDING IT MEETS THE FOLLOWING REQUIREMENTS AND DIMENSIONS SHOWN.

DESCRIPTION: VARIABLE COMPOSITION RESISTORS, FOR USE IN MILITARY EQUIPMENT.

POWER DISSIPATION: 2 WATTS MINIMUM AT 70°C.

ENCLOSURE: RESISTORS SHALL HAVE SUITABLE ENCLOSURES FOR PROTECTION AGAINST MECHANICAL DAMAGE AND SHALL BE SUBSTANTIALLY DUSTPROOF.

FINISH: UNITS SHALL WITHSTAND 100 HOUR SALT SPRAY TEST IN ACCORDANCE WITH FEDERAL SPECIFICATION QQ-M-151.

FUNGUS TREATMENT: PHENOLIC PARTS SHALL BE NON-NUTRIENT TO FUNGI, OR THE JUNCTION BETWEEN METAL COVER AND PHENOLIC BASE SHALL BE COATED WITH VARNISH (NOT LACQUER), CONTAINING A MINIMUM OF 8% SALICYLANILIDE.

SWITCH: A SPST OR SPDT (AS INDICATED IN TABLE) SWITCH RATED 2 AMPERES, 125 VOLTS SHALL BE ATTACHED AT REAR AS SHOWN. SWITCH SHALL BE OFF AT EXTREME COUNTERCLOCKWISE SHAFT POSITION.

B₁ ANGLE OF ROTATION: WITHOUT SWITCH, 309° TO 320° WITH SWITCH, 330° TO 340° EFFECTIVE ROTATION IN ALL CASES, 309° TO 320°

B₂ DESIGN OF TERMINAL OPTIONAL: SIZE AND STYLE SHALL PERMIT ACCOMMODATING AND SOLDERING THREE 0.032 DIAMETER (#20AWG) WIRE. LUGS SHALL BE SUITABLY COATED TO FACILITATE SOLDERING. FLAT ON SHAFT SHALL BE 5/8" LONG OR SHALL EXTEND TO WITHIN 0.062" OF MOUNTING BUSHING. **A₁**

MOUNTING HARDWARE TO BE SUPPLIED: NONE

CONSTRUCTION SHALL BE IN ACCORDANCE WITH THE INTENT OF JOINT ARMY-NAVY SPECIFICATION MIL-R-94.

UNITS SHALL BE PERMANENTLY AND LEGIBLY MARKED WITH CONTRACTORS PART NUMBER, RESISTANCE VALUE, AND MANUFACTURER'S NAME OR TRADE MARK, AND SHALL BE IN ACCORDANCE WITH SPEC MIL-M-13231.

** WHEN PART NO APPEARS AS 559 030A 9-3 MILITARY SOURCE INSPECTION IS REQUIRED.*

CALLING PART NO.	QTY	REQD	PART NO.	DESCRIPTION	MATL	MATL SPEC
LIST OF MATERIAL						
				-CALLING PART NO. 559 030A 9-3-		

DRAWN JENNETT				CHECKED [Signature]		APPROVED		-COLLINE RADIO-60- 559-030A-9-3- 14214-PH 51-93		DEPARTMENT OF THE ARMY SIGNAL CORPS ENGINEERING LABORATORIES FORT MONMOUTH NEW JERSEY SM-C-283203	
UNLESS OTHERWISE SPECIFIED: DECIMAL DIMENSIONS INCLUDING HOLE SIZES MAY VARY ±.008 FRACTIONAL DIMENSIONS INCLUDING HOLE SIZES MAY VARY ±1/64 MACHINED ANGLES MAY VARY ±1° SHEARED ANGLES MAY VARY ±.25° SHROKEN ANGLES MAY VARY ±.1° ECCENTRICITY BETWEEN ANY DIAMETERS ON THE SAME CENTERLINE SHALL NOT EXCEED .010 TOTAL INDICATOR READING. ALL DIMENSIONS ARE FINISH DIMENSIONS INCLUDING APPLIED FINISH AND ARE GIVEN IN INCHES.								SIGNAL CORPS			
658 0486 004 -1- SMD-24913A SC-DL-248713								REVIEWED PME			
APPLICATION				DATE 26 MAR 56				SCALE 1/1			
CALLING NO. QTY NEXT ASBY USED ON								APPROVED HLY PME			