

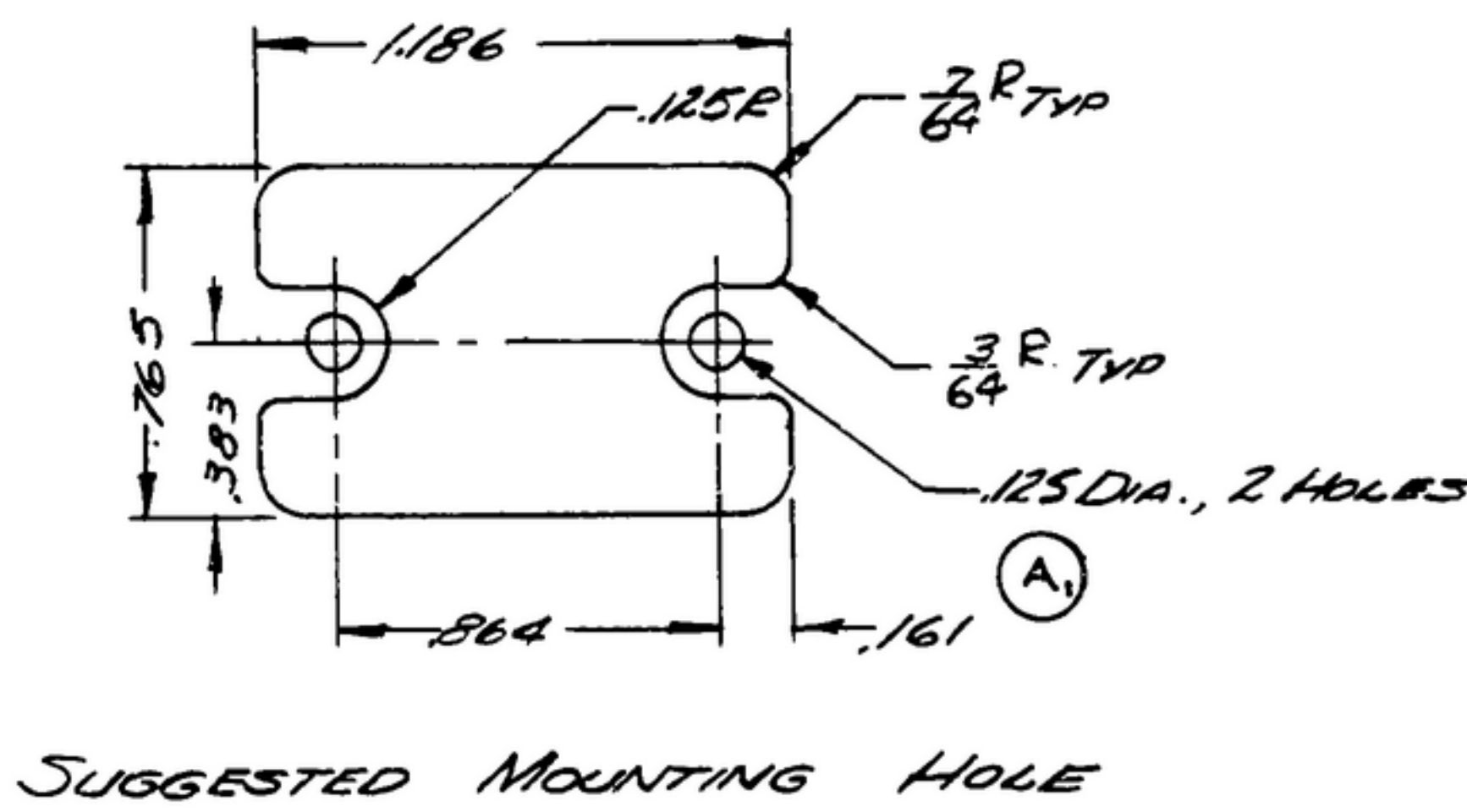
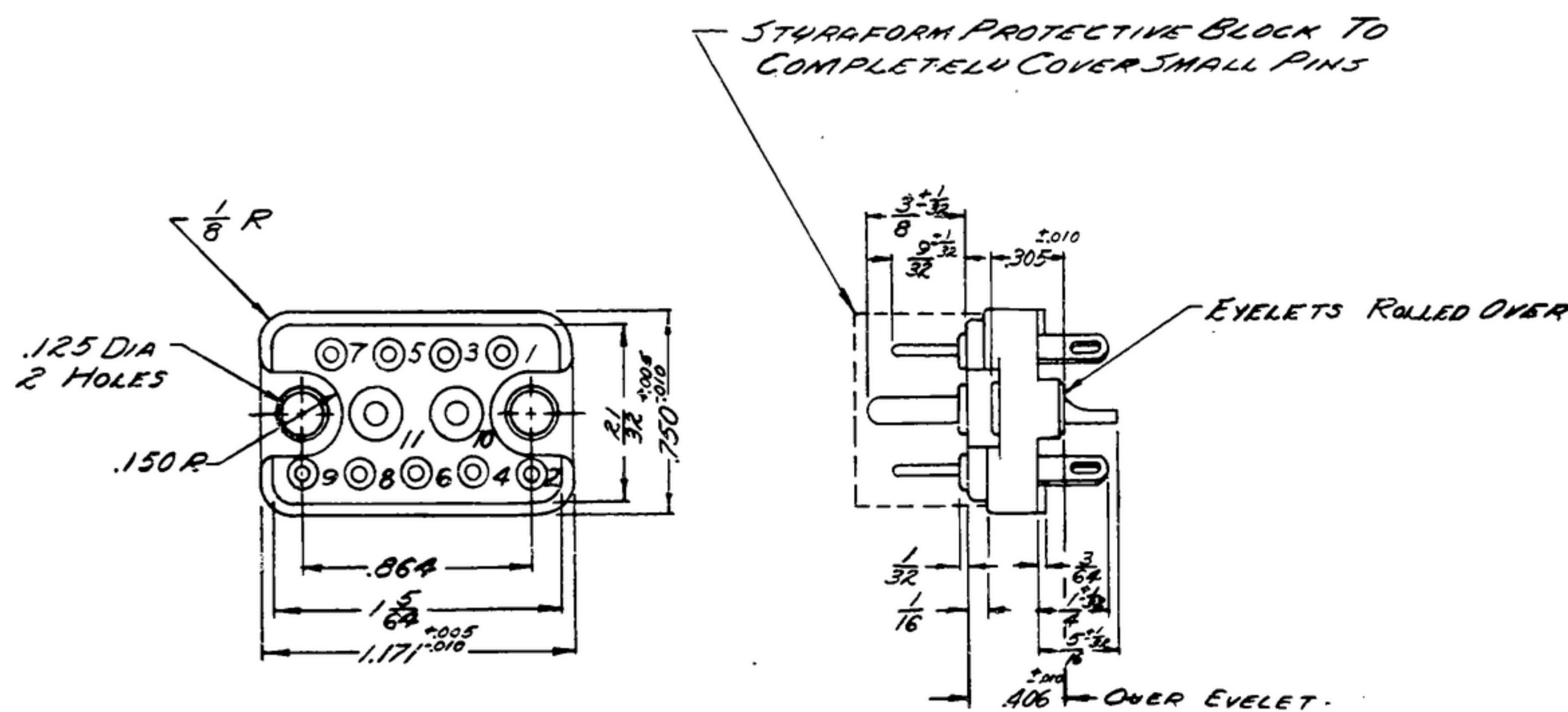
NOTICE: WHEN GOVERNMENT DRAWINGS, SPECIFICATIONS, OR OTHER DATA ARE USED FOR ANY PURPOSE OTHER THAN IN CONNECTION WITH A DEFINITELY RELATED GOVERNMENT PROCUREMENT OPERATION, THE UNITED STATES GOVERNMENT THEREBY INCURS NO RESPONSIBILITY AND NO OBLIGATION WHATSOEVER, AND THE FACT THAT THE GOVERNMENT MAY HAVE PATENTED, PROMOTED, OR IN ANY WAY SUPPLIED THE SAID DRAWINGS, SPECIFICATIONS, OR OTHER DATA IS NOT TO BE REGARDED BY IMPLICATION OR OTHERWISE AS IN ANY MANNER LICENSES THE REPLICATING OR ANY OTHER PERSON OR ORGANIZATION, OR CONVEYING ANY RIGHTS OR PERMISSION TO MANUFACTURE, USE, OR SELL ANY PATENTED INVENTION THAT MAY IN ANY WAY BE RELATED THERETO.

THIS DOCUMENT HAS BEEN PURCHASED BY THE GOVERNMENT AND MAY BE REPRODUCED AND USED IN CONNECTION WITH ANY GOVERNMENT PROCUREMENT OR MAINTENANCE OPERATION.

\*FOR INFORMATION ONLY. CONTRACTOR MAY AT HIS OPTION DEVIATE FROM THESE PROCESS DETAILS.

~~X SWF APPROVAL~~  
~~SYM PRIOR 42-6~~

REVISIONS			
SYM	DESCRIPTION	DATE	APPROVAL
A <sub>3</sub>	A <sub>1</sub> WAS .120 DIA A <sub>2</sub> ADDED NOTE 2 A <sub>3</sub> WAS MIL-P-14	15 OCT 59	42428-PC REV'D PME
B	(1) "WITH GOLD FLASH" WAS "OR M310 OVER M351"	31 OCT 61	42428-PC-59 REV'D PME



NOTES:  
1. PART MAY BE #125-804-1000, AS SUPPLIED BY AMERICAN PHENOLIC CORP., CHICAGO, ILL., OR EQUAL, PROVIDING IT MEETS THE FOLLOWING REQUIREMENTS AND DIMENSIONS SHOWN.

- DESCRIPTION:** 11 CONTACT PANEL OR CABLE MOUNTING MALE CONNECTOR.
- VOLTAGE RATING:** 500 VOLTS RMS MAXIMUM AT SEA LEVEL.
- CURRENT RATING:** 2 LARGE CONTACTS (.093 DIA) - 15 AMPERES (A<sub>3</sub>)  
9 SMALL CONTACTS (.040 DIA) - 5 AMPERES
- INSULATION:** PHENOLIC TYPE MFE OR BETTER IN ACCORDANCE WITH MILITARY SPECIFICATION MIL-M-14.
- TERMINALS:** 2, .093 DIAMETER BRASS CONTACTS (A<sub>3</sub>)  
9, .040 DIAMETER BRASS CONTACTS (B<sub>1</sub>)
- TERMINAL PLATING:** M351 PER MIL-F-14072 WITH GOLD FLASH.
- EYELETS:** BRASS, FINISH: M352 PER SPEC. MIL-F-14072.
- MARKINGS:** TERMINAL NUMBER SHALL BE MOLDED ON FRONT AND REAR OF CASTING AS SHOWN AND SHALL BE IN ACCORDANCE WITH SPEC. MIL-38-13231.
- MOUNTING DATA:** LIQUID STAKING IS RECOMMENDED FOR MOUNTING SCREWS RATHER THAN LOCKWASHERS. EYELET MAY BE OMITTED IF 0.406 AND 0.305 DIMENSIONS ARE MAINTAINED.
- UNIT SHALL BE SUPPLIED WITH STYRAFORM PROTECTIVE BLOCK INSERTED ON PINS AND SHALL COMPLETELY COVER SMALL PINS.**
- APPROXIMATE HOLE IN CONTACTS:** SMALL CONTACTS - .062 X .125  
LARGE CONTACTS - .085 X .125
- PINS SHALL BE MOLDED INTO THE BODY OF THE CONNECTOR**
- CONTACT TAILS:** FINISH: M317 OR M310 PER SPEC MIL-F-14072.

(A<sub>2</sub>) 2. CONNECTOR SHALL MEET THE APPLICABLE REQUIREMENTS OF MIL-C-8384 EXCEPT WHERE AMENDED BY THIS SPECIFICATION

\* WHEN PART NO. APPEARS AS 559-0292-9-3, MILITARY SOURCE INSPECTION IS REQUIRED.

COLLINS PART NO.	REV.	REQD.	PART NO.	DESCRIPTION	QTY.	DATE SPEC.
LIST OF MATERIAL						
COLLINS PART NO. 559-0292003						

DRAWN <i>RDG</i> CHECKED <i>Blm</i> APPROVED	UNLESS OTHERWISE SPECIFIED: DECIMAL DIMENSIONS INCLUDING HOLE SIZES MAY VARY ±.005 FRACTIONAL DIMENSIONS INCLUDING HOLE SIZES MAY VARY ±1/64 MACHINED ANGLES MAY VARY ±1° BREAKED ANGLES MAY VARY ±.05" BROKEN ANGLES MAY VARY ±.1° ECCENTRICITY BETWEEN ANY DIAMETERS ON THE SAME CENTERLINE SHALL NOT EXCEED .010 TOTAL INDICATOR READING. ALL DIMENSIONS ARE FINISH DIMENSIONS INCLUDING APPLIED FINISH AND ARE GIVEN IN INCHES.	COLLINS-RADIS-00- -SICAR-RAPID-10WA 14214-PH- 51-93	DEPARTMENT OF THE ARMY SIGNAL CORPS ENGINEERING LABORATORIES  FORT MONMOUTH NEW JERSEY  SM-C-283191
		SIGNAL CORPS REVIEWED <i>PME</i> APPROVED <i>HLV</i> <i>PME</i> DATE 16 JAN 1955 SCALE 2/11	
APPLICATION COLLINS NO. <i>558-0340-00A</i> / <i>558-0333-00A</i> NEXT ASBY USED ON		CONNECTOR-PLUG	