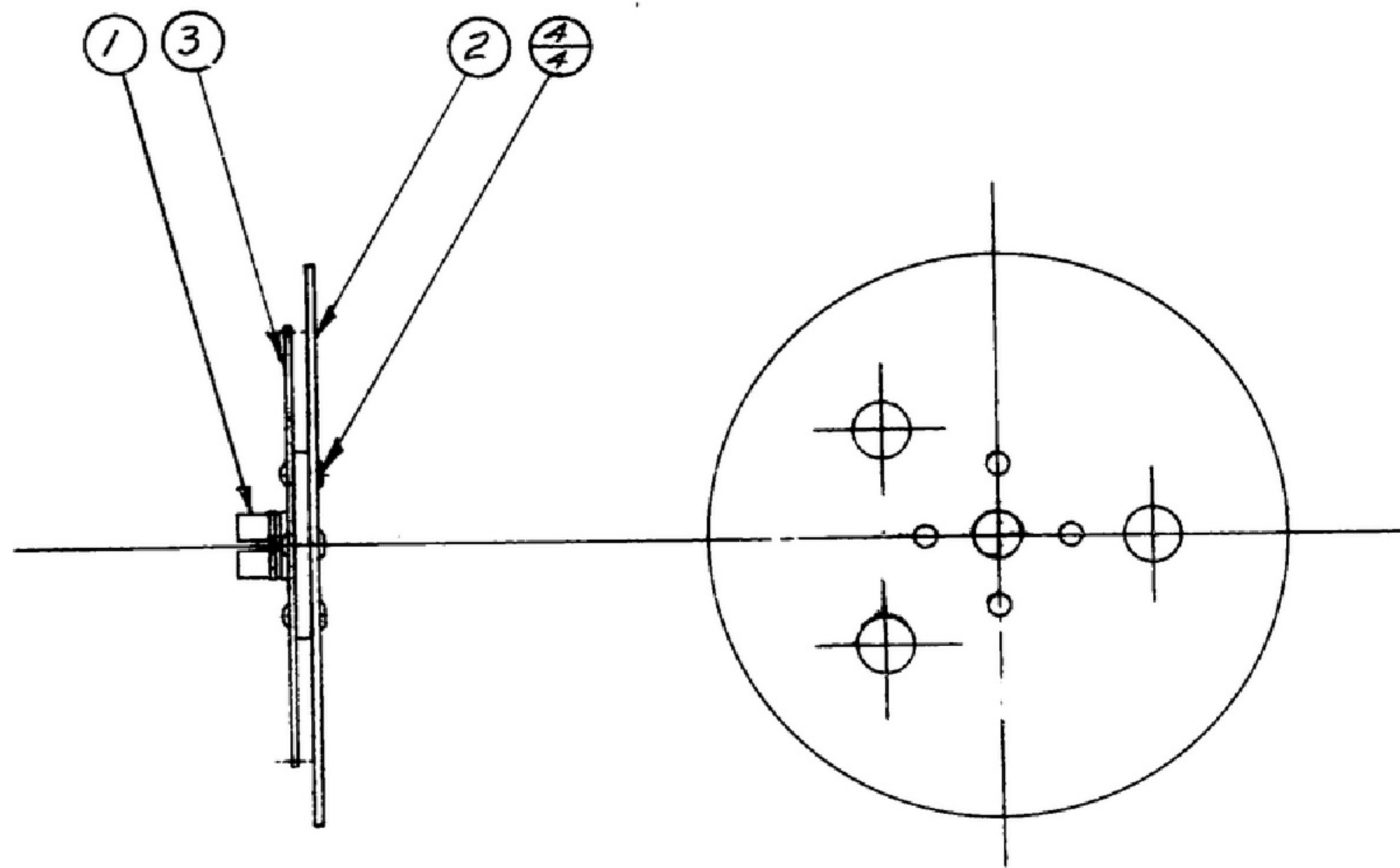


REVISIONS			
SYM	DESCRIPTION	DATE	APPROVAL

NOTICE: WHEN GOVERNMENT DRAWINGS, SPECIFICATIONS, OR OTHER DATA ARE USED FOR ANY PURPOSE OTHER THAN IN CONNECTION WITH A SPECIFICALLY RELATED GOVERNMENT PROCUREMENT OPERATION, THE USER STATES GOVERNMENT THROUGH HIS OWN RESPONSIBILITY AND ANY SOLICITING STATEMENT AND THE FACT THAT THE GOVERNMENT MAY HAVE PERMITTED, PROVIDED, OR IN ANY WAY SUPPLIED THE DATA DRAWINGS, SPECIFICATIONS, OR OTHER DATA IS NOT TO BE CONSIDERED AN ENDORSEMENT OR OPERATION, OR OTHERWISE ANY RIGHTS OR PRIVILEGES TO REPRODUCE, USE, OR SELL ANY PATENTED INVENTION THAT MAY BE ANY WAY OR RELATED THEREBY.

THIS DOCUMENT HAS BEEN PURCHASED BY THE GOVERNMENT AND MAY BE REPRODUCED AND USED IN CONNECTION WITH ANY GOVERNMENT PROCUREMENT OR MAINTENANCE OPERATION.

* FOR INFORMATION ONLY, CONTRACTOR MAY AT HIS OPTION DEVIATE FROM THESE PROCESS DETAILS.



- NOTES:**
1. ASSEMBLE PLATE (2), GEAR (3), & HUB (1) AS SHOWN. ALIGN CLEARANCE HOLES.
 2. MATCH DRILL .089^{+0.002}/_{-.000} DIA. HOLES FOR RIVETS, USING HOLES IN GEAR (3) AS PILOT HOLES. INSERT RIVETS (4) & SECURE BY ROLLING.
 3. SIDE RUNOUT OF .010 T.I.R. PERMISSIBLE ON GEAR & PLATE.
 4. IN ALL SPIT BALLOONS TOP FIGURE IS MATERIAL LIST ITEM INDICATOR & BOTTOM FIGURE IS QUANTITY.

COLLINE PART NO.	ITEM	REQD	PART NO.	DESCRIPTION	MATL	MATL SPEC
558 0213 002	4	4	SM-B-249259	RIVET-TUBULAR		
558 0280 002	3	1	SM-B-248951	GEAR-SPUR		
558 0279 002	2	1	SM-B-248930	PLATE-LOCKING		
558 0278 002	1	1	SM-B-248929	HUB-LOCKING PLATE		

LIST OF MATERIAL COLLINE PART NO. 558 0317 003

APPLICATION				DRAWN HAMER	CHECKED <i>Ch</i>	APPROVED _____	COLLINS-RADIO CO. CEDAR RAPIDS, IOWA 14214-PH-51-93	DEPARTMENT OF THE ARMY SIGNAL CORPS ENGINEERING LABORATORIES FORT MONMOUTH NEW JERSEY		
558 0321 004 COLLINS NO.	1 QTY	SM-D-248975 SC DL 248715 NEXT ASSY	USED ON	UNLESS OTHERWISE SPECIFIED: DECIMAL DIMENSIONS INCLUDING HOLE SIZES MAY VARY ±.008 FRACTIONAL DIMENSIONS INCLUDING HOLE SIZES MAY VARY ±1/64 MACHINED ANGLES MAY VARY ±1° SHEARED ANGLES MAY VARY ±.25° BROKEN ANGLES MAY VARY ±1° ECCENTRICITY BETWEEN ANY DIAMETERS ON THE SAME CENTERLINE SHALL NOT EXCEED .010 TOTAL INDICATOR READING. ALL DIMENSIONS ARE FINISH DIMENSIONS INCLUDING APPLIED FINISH AND ARE GIVEN IN INCHES.			SIGNAL CORPS REVIEWED PME APPROVED HLY PME		DATE 3 JAN 56	SCALE 1/1