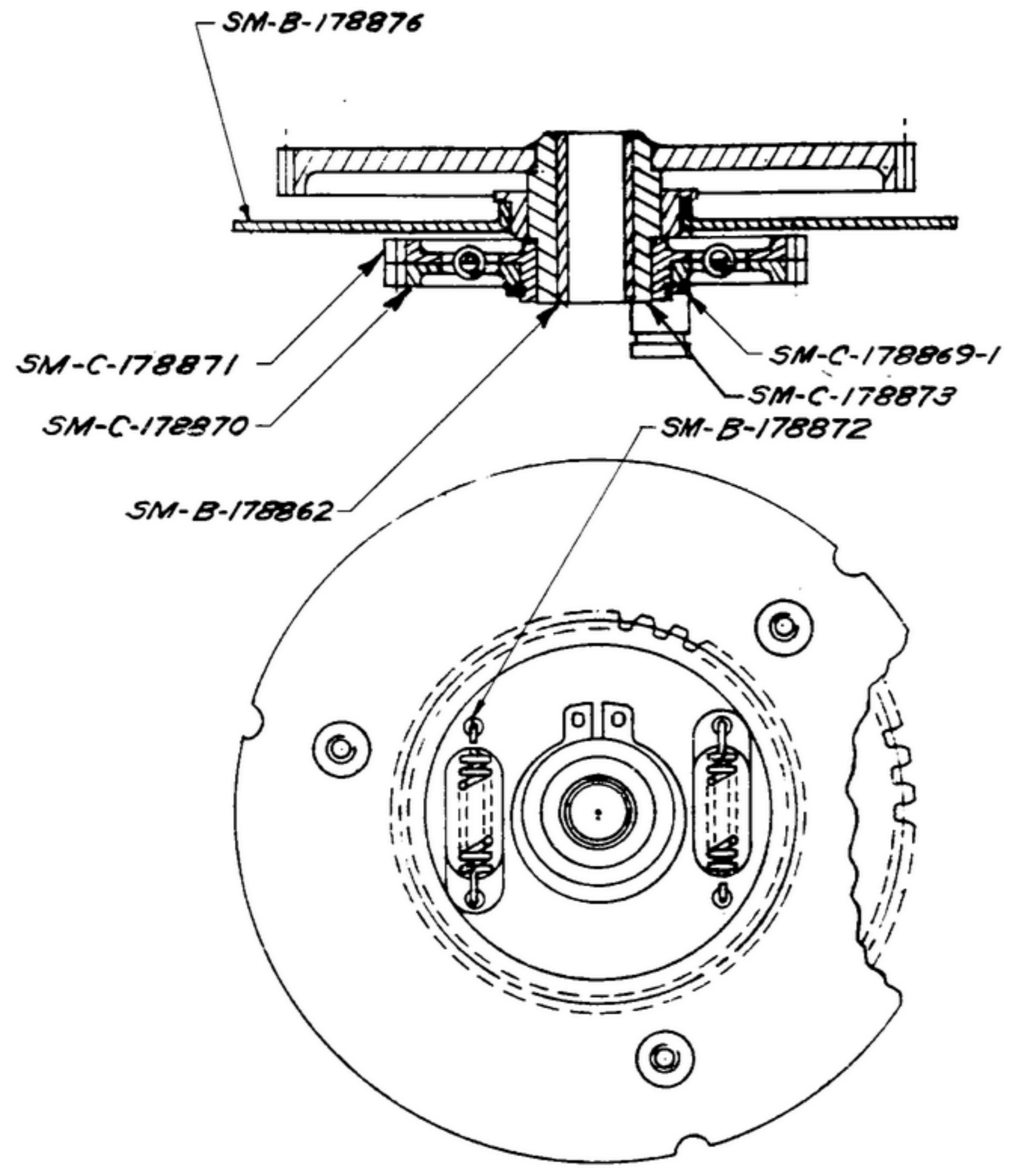


5 U.S.S.

506 1864-002 R-391

NOTICE: WHEN GOVERNMENT DRAWINGS, SPECIFICATIONS, OR OTHER DATA ARE USED FOR ANY PURPOSE OTHER THAN IN CONNECTION WITH A SPECIFICALLY RELATED GOVERNMENT PROCUREMENT OPERATION, THE UNITED STATES GOVERNMENT THEREBY INCURS NO RESPONSIBILITY FOR ANY OMISSION, WHATSOEVER, AND THE FACT THAT THE GOVERNMENT MAY HAVE FORMULATED, PURCHASED, OR IN ANY WAY SUPPLIED THE SAID DRAWINGS, SPECIFICATIONS, OR OTHER DATA IS NOT TO BE REGARDED BY IMPLICATION OR OTHERWISE AS IN ANY MANNER LICENSING THE HOLDER OR ANY OTHER PERSON OR CORPORATION, OR CONVEYING ANY RIGHTS OR PERMISSION TO MANUFACTURE, USE, OR SELL ANY PATENTED INVENTION THAT MAY IN ANY WAY BE RELATED THERETO.

REVISIONS			
SYM	DESCRIPTION	DATE	APPROVAL



- 1- AS SUPPLIED BY WALDES KOH - 1-NOOR, LONG ISLAND CITY, 1, NEW YORK OR EQUAL.
- 2- PRESS BEARING INTO GEAR FLUSH AT ONE END & MACHINE OPPOSITE END TO AN OVERALL LENGTH OF .562 ± .002
- 3- BURNISH BORE OF BEARING TO .1875 ± .0005 DIA.

QTY	PART NO.	DESCRIPTION	MATL	MATL SPEC	NOTES
1	SM-C-178869-1	RING - # 5100-50			3
1	SM-B-178876	PLATE ASSY			
1	SM-C-178873	GEAR ASSY			
2	SM-B-178872	SPRING			
1	SM-C-178871	GEAR			
1	SM-C-178870	GEAR			
1	SM-B-178862	BEARING			

LIST OF MATERIAL

		UNLESS OTHERWISE SPECIFIED DIMENSIONS ARE IN INCHES TOLERANCES ON FRACTIONS DECIMALS ANGLES	AUTHENTICATION DRAWN <i>PH-50-93</i> TRACED <i>PHOTO</i> CHECKED <i>[Signature]</i> VERIFIED <i>P.D.B.R.</i> APPROVED <i>P.D.B.R.</i> REVIEWED <i>P.M.E.</i> DATE <i>15-SEP-53</i>		<p style="text-align: center;">GEAR ASSY</p> <p style="text-align: center;">SCALE 2/1</p>	<p style="text-align: center;">SIGNAL CORPS ENGINEERING LABORATORIES</p> <p style="text-align: center;">FORT MONMOUTH NEW JERSEY</p> <p style="text-align: center;">SM-C-178869</p>
SM-C-178854	SC-DL-178467					
NEXT ASSY	USED ON					
APPLICATION						