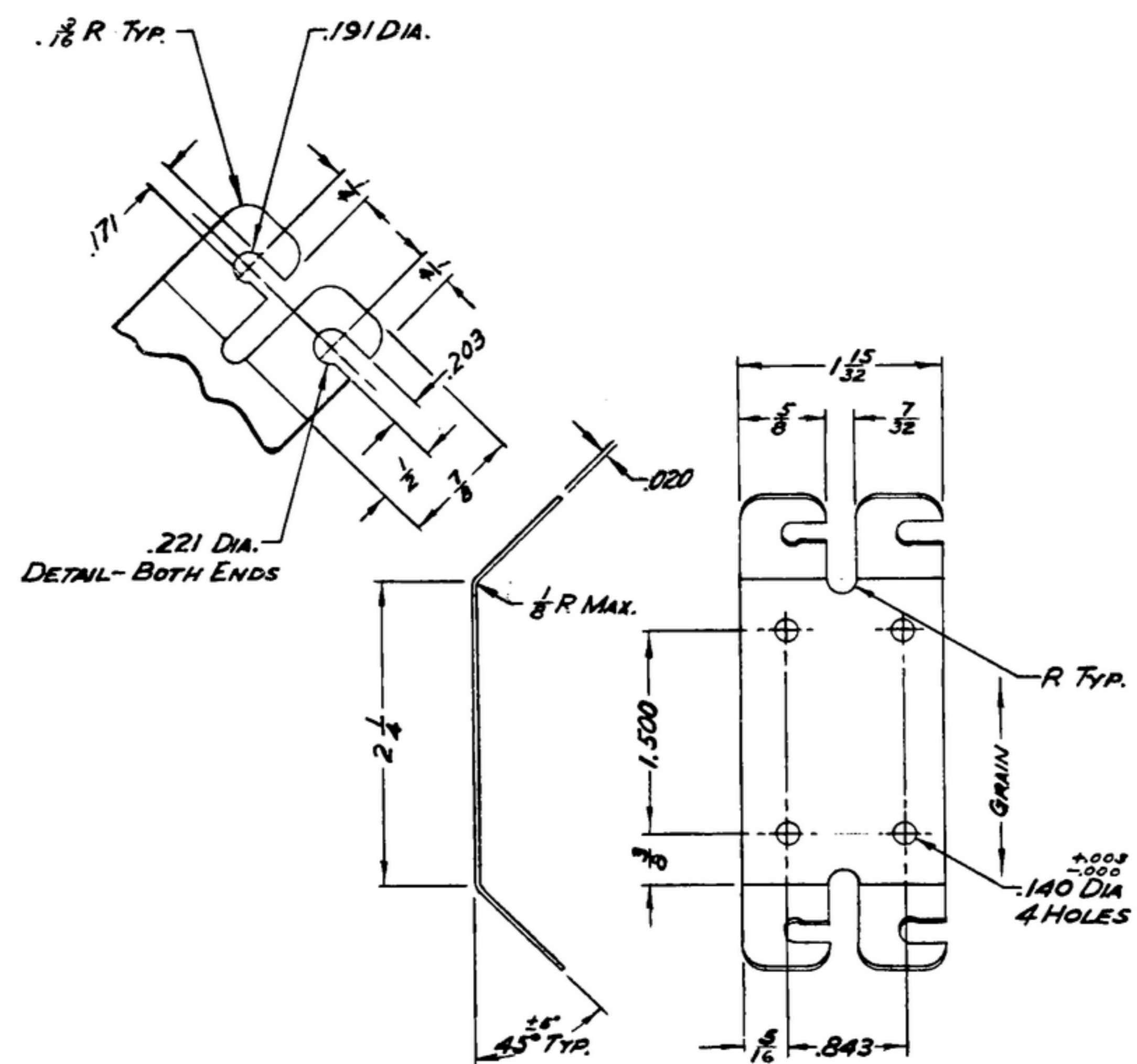


506-1974-002- R-391

NOTICE: When Government drawings, specifications, or other data are used for any purpose other than in connection with a definitely related Government procurement operation, the United States Government thereby incurs no responsibility or any obligation whatsoever; and the fact that the Government may have furnished, furnished, or in any way supplied the said drawings, specifications, or other data is not to be regarded by implication or otherwise as in any manner granting the holder or any other person or corporation, or conveying any rights or permission to manufacture, use or sell any patented invention that may in any way be related thereto.

NOTE:
*FOR INFORMATION ONLY,
CONTRACTOR MAY AT HIS
OPTION DEVIATE FROM
THESE PROCESS DETAILS

NEXT ASSEMBLY	USED ON	SWE	REVISIONS	DATE	APPROVAL
SM-D-178674	SC-DL-178467	APPROVAL			
SM-D-249138	SC-DL-248775	S.P.R.	A4	15 OCT. 59	REV'D. PME
SM-D-343618		Y/100426			



- NOTES:
- 1.- PHOSPHOR BRONZE, COMP. A, SPRING TEMPER, PER SPEC. QQ-P-330.
 - 2.- REMOVE ALL BURRS.
 - 3.- FINISH: M312 PER MIL-F-14072.

REQ.	PART NO.	DESCRIPTION	MATL.	SPEC.	NOTE
		CLAMP			
UNLESS OTHERWISE SPECIFIED		AUTHENTICATION			
DIMENSIONS ARE IN INCHES		DRAWN 21852-PH-50-99			
TOLERANCES ON FRACTIONS ± 1/64		TRACED PHOTO			
DECIMALS ± .005		CHECKED <i>h</i>			
ANGLES ±		VERIFIED <i>PO BR</i>			
COMMERCIAL TOLERANCES APPLY TO STOCK SIZES		APPROVED <i>PO BR</i>			
ALL SURFACES ✓		REVIEWED <i>PME</i>			
		DATE 26 JUN 53			
		SCALE 1/1		90-441	
				DEPARTMENT OF THE ARMY SIGNAL CORPS ENGINEERING LABORATORIES FORT MONMOUTH NEW JERSEY	
		SM-C-178677			

WHEN REFERRING TO THIS DRAWING STATE DRAWING NO., APPLICABLE ISSUE SYMBOL AND DATE