

7

EQUIP. TYPE *2390A/HER* EXP. NO.

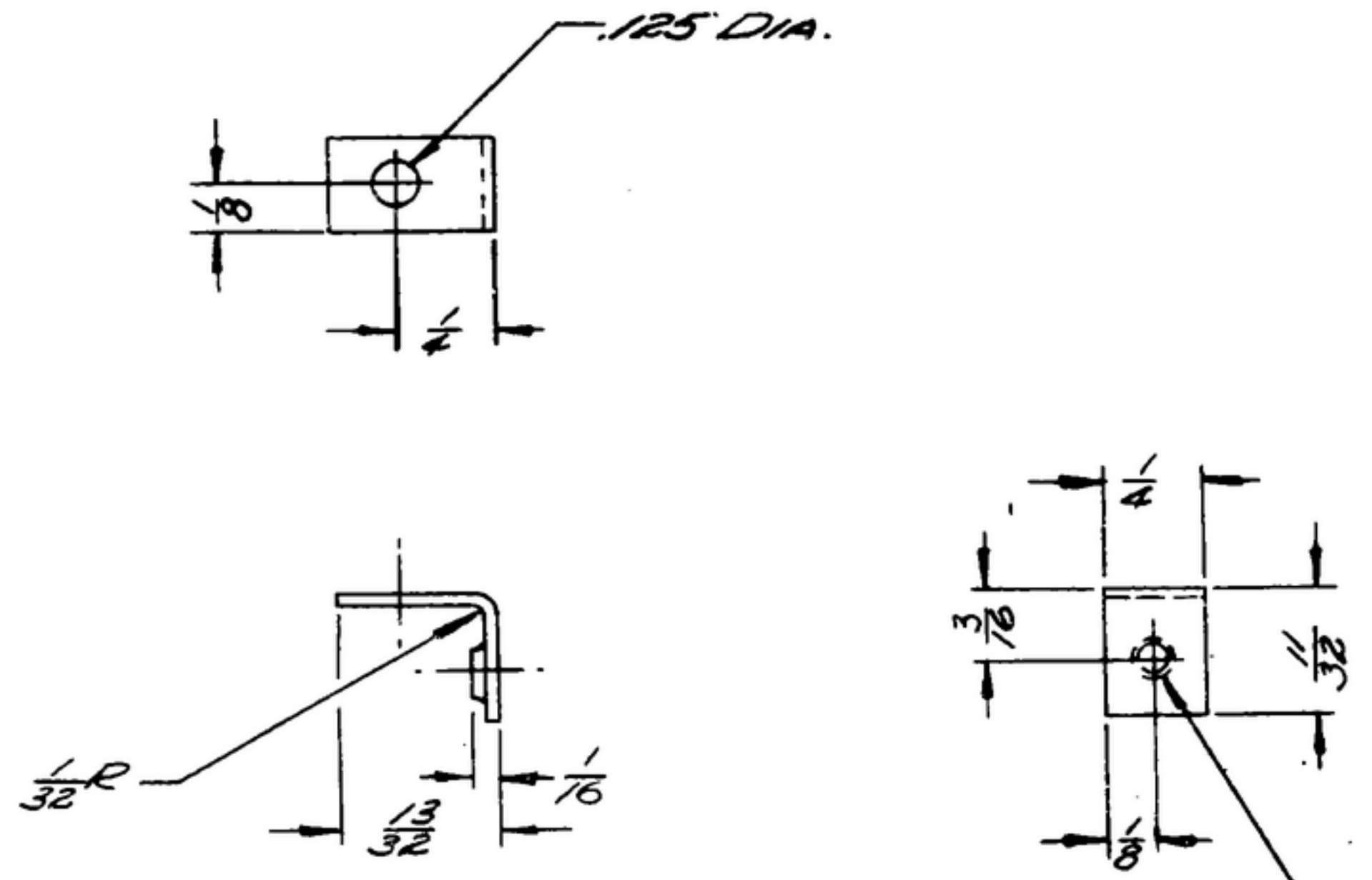
*Coll 588 3015 603*

NOTICE: WHEN GOVERNMENT DRAWINGS, SPECIFICATIONS, OR OTHER DATA ARE USED FOR ANY PURPOSE OTHER THAN IN CONNECTION WITH A DEFINITELY RELATED GOVERNMENT PROCUREMENT OPERATION, THE UNITED STATES GOVERNMENT THEREBY INCURS NO RESPONSIBILITY NOR ANY OBLIGATION WHATSOEVER; AND THE FACT THAT THE GOVERNMENT MAY HAVE FORMULATED, FURNISHED, OR IN ANY WAY SUPPLIED THE SAID DRAWINGS, SPECIFICATIONS, OR OTHER DATA IS NOT TO BE REGARDED AS IMPLICATION OR OTHERWISE AS IN ANY MANNER LICENSING THE HOLDER OR ANY OTHER PERSON OR CORPORATION, OR CONVEYING ANY RIGHTS OR PERMISSION TO MANUFACTURE, USE, OR SELL ANY PATENTED INVENTION THAT MAY IN ANY WAY BE RELATED THERETO.

THIS DOCUMENT HAS BEEN PURCHASED BY THE GOVERNMENT AND MAY BE REPRODUCED AND USED IN CONNECTION WITH ANY GOVERNMENT PROCUREMENT OR MAINTENANCE OPERATION.

\*FOR INFORMATION ONLY. CONTRACTOR MAY AT HIS OPTION DEVIATE FROM THESE PROCESS DETAILS.

REVISIONS			
SYM	DESCRIPTION	DATE	APPROVAL



EXTRUDE &  
TAP 4-40NC-2B

STEEL, CLASS B, FINISH D, PER SPEC QQ-5-00692 .032 THICK

FINISH: M262 PER SPEC MIL-F-15072.

\*COLLINS 588 0069 00.

NOTES:

1. ALL SCREW THREADS PER BUREAU OF STANDARDS HANDBOOK 42B.

COLLINS PART NO.	TYPE	REQD	PART NO.	DESCRIPTION	MATL	MATL SPEC
LIST OF MATERIAL						
COLLINS PART NO. <i>588 0561 003</i>						

<i>588 0363 004 4</i>	<i>SM-D-24875</i>	<i>SC-DE-24875</i>	
COLLINS NO.	QTY	NEXT ASSY	USED ON
APPLICATION			

DRAWN *RDE* CHECKED *Rhm* APPROVED

UNLESS OTHERWISE SPECIFIED:  
 DECIMAL DIMENSIONS INCLUDING HOLE SIZES MAY VARY ±.008  
 FRACTIONAL DIMENSIONS INCLUDING HOLE SIZES MAY VARY ±1/64  
 MACHINED ANGLES MAY VARY ±1°  
 SHEARED ANGLES MAY VARY ±.25°  
 BROKEN ANGLES MAY VARY ±1°  
 ECCENTRICITY BETWEEN ANY DIAMETERS ON THE SAME CENTERLINE SHALL NOT EXCEED .010 TOTAL INDICATOR READING.  
 ALL DIMENSIONS ARE FINISH DIMENSIONS INCLUDING APPLIED FINISH AND ARE GIVEN IN INCHES.

COLLINS-RADIS-00-  
-0000-RADIS-1000-  
*14214 -PH-*  
*51-93*

SIGNAL CORPS

REVIEWED *PME*

APPROVED *HLV*  
*PME*

DATE *4 JAN 57* SCALE *2/1*

*BRACKET - ANGLE*

DEPARTMENT OF THE ARMY  
SIGNAL CORPS ENGINEERING  
LABORATORIES

FORT MONMOUTH NEW JERSEY

*SM-B-283267*