

EQUIP. TYPE *D-390A/HDP* EXP. NO.

Col 340-0045-00

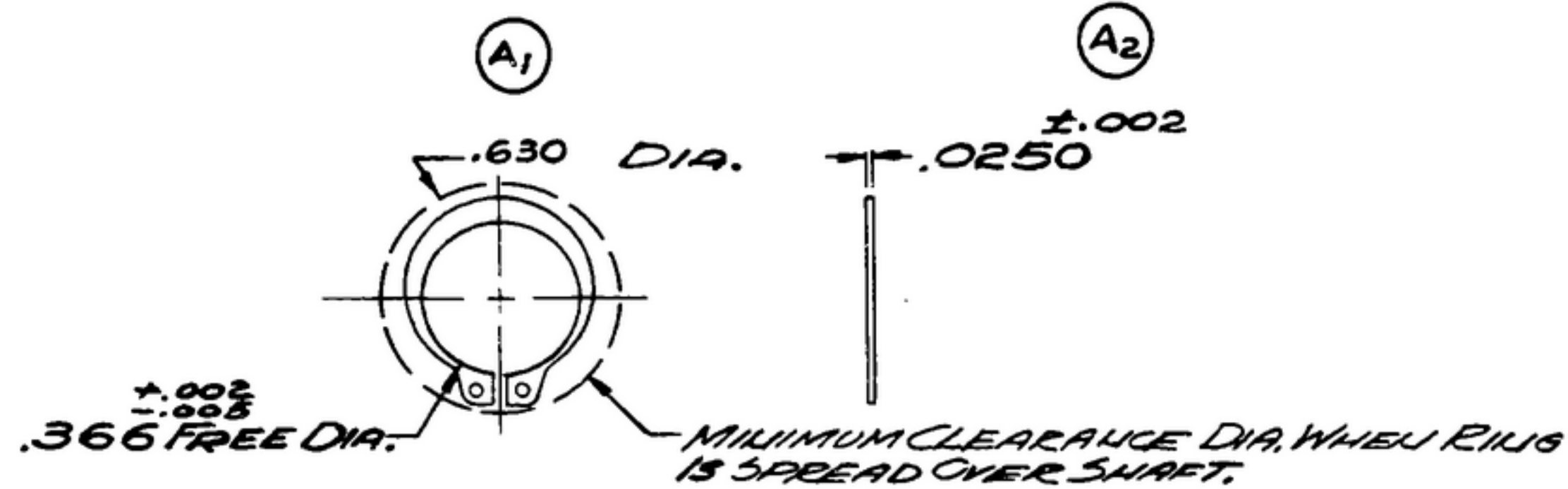
NOTICE: WHEN GOVERNMENT DRAWINGS, SPECIFICATIONS, OR OTHER DATA ARE USED FOR ANY PURPOSE OTHER THAN IN CONNECTION WITH A DEFINITELY RELATED GOVERNMENT PROCUREMENT OPERATION, THE UNITED STATES GOVERNMENT THEREBY INCURS NO RESPONSIBILITY FOR ANY OBLIGATION WHATSOEVER; AND THE FACT THAT THE GOVERNMENT MAY HAVE FORMULATED, FURNISHED, OR IN ANY WAY SUPPLIED THE SAID DRAWINGS, SPECIFICATIONS, OR OTHER DATA IS NOT TO BE REGARDED BY IMPLICATION OR OTHERWISE AS IN ANY MANNER LICENSING THE HOLDER OR ANY OTHER PERSON OR CORPORATION, OR CONFERRING ANY RIGHTS OR PERMISSION TO MANUFACTURE, USE, OR SELL ANY PATENTED INVENTION THAT MAY IN ANY WAY BE RELATED THERETO.

THIS DOCUMENT HAS BEEN PURCHASED BY THE GOVERNMENT AND MAY BE REPRODUCED AND USED IN CONNECTION WITH ANY GOVERNMENT PROCUREMENT OR MAINTENANCE OPERATION.

* FOR INFORMATION ONLY. CONTRACTOR MAY AT HIS OPTION DEVIATE FROM THESE PROCESS DETAILS.

** SWE APPROVAL
SYM PR 10042-4*

REVISIONS			
SYM	DESCRIPTION	DATE	APPROVAL
A ₃	A ₁ -WAS .580, A ₂ -WAS ± .0015, A ₃ -ADDED APPL. SM-D-343600	8 OCT. 59	42428-PC -59-A1-51 REV'D PME



NOTES:

1. PART MAY BE #5100-40 AS SUPPLIED BY WALDES KOH-1-NOR, INC, LONG ISLAND CITY, N.Y., OR EQUAL, PROVIDING IT MEETS THE FOLLOWING REQUIREMENTS AND DIMENSIONS SHOWN.

MATERIAL: BERYLLIUM COPPER

COLLINE PART NO.	ITEM	REQD	PART NO.	DESCRIPTION	DATE	MAP. SPEC.
LIST OF MATERIAL						
COLLINE PART NO. <i>559-0438002</i>						

<p style="text-align: center;">(A₃)</p>				DRAWN <i>RAW</i>	CHECKED <i>AM</i>	APPROVED	COLLINS-RADIO CO. -OSCAR RAPIDS, IOWA- <i>1421A-DH</i> <i>-51-93</i>	RING-RETAINER	DEPARTMENT OF THE ARMY SIGNAL CORPS ENGINEERING LABORATORIES FORT MONMOUTH NEW JERSEY
				UNLESS OTHERWISE SPECIFIED: DECIMAL DIMENSIONS INCLUDING HOLE SIZES MAY VARY ±.005 FRACTIONAL DIMENSIONS INCLUDING HOLE SIZES MAY VARY ±1/64 MACHINED ANGLES MAY VARY ±1° SHEARED ANGLES MAY VARY ±.25° BROKEN ANGLES MAY VARY ±1° ECCENTRICITY BETWEEN ANY DIAMETERS ON THE SAME CENTERLINE SHALL NOT EXCEED .010 TOTAL INDICATOR READING. ALL DIMENSIONS ARE FINISH DIMENSIONS INCLUDING APPLIED FINISH AND ARE GIVEN IN INCHES.			SIGNAL CORPS REVIEWED <i>PME</i> APPROVED <i>HLV</i> <i>PME</i>		
558-0334004 SM-D-343600 JM-D-248975 SC-DL-248775				APPLICATION		558-0334004 SM-D-248975 SC-DL-248775		SM-B-283251	