

EQUIP TYPE *R390AJRR* EXP NO

COL 307 1000 00

NOTICE: WHEN GOVERNMENT DRAWINGS ARE USED FOR ANY PURPOSE OTHER THAN THAT AUTHORIZED BY THE DRAWING, THE USER ASSUMES ALL LIABILITY FOR ANY DAMAGE OR INJURY TO PERSONS OR PROPERTY. THE GOVERNMENT WILL NOT BE RESPONSIBLE FOR ANY SUCH DAMAGE OR INJURY. THE USER SHALL INDEMNIFY AND HOLD THE GOVERNMENT HARMLESS FROM AND AGAINST ALL SUCH DAMAGES AND INJURIES. THE USER SHALL INDEMNIFY AND HOLD THE GOVERNMENT HARMLESS FROM AND AGAINST ALL SUCH DAMAGES AND INJURIES. THE USER SHALL INDEMNIFY AND HOLD THE GOVERNMENT HARMLESS FROM AND AGAINST ALL SUCH DAMAGES AND INJURIES.

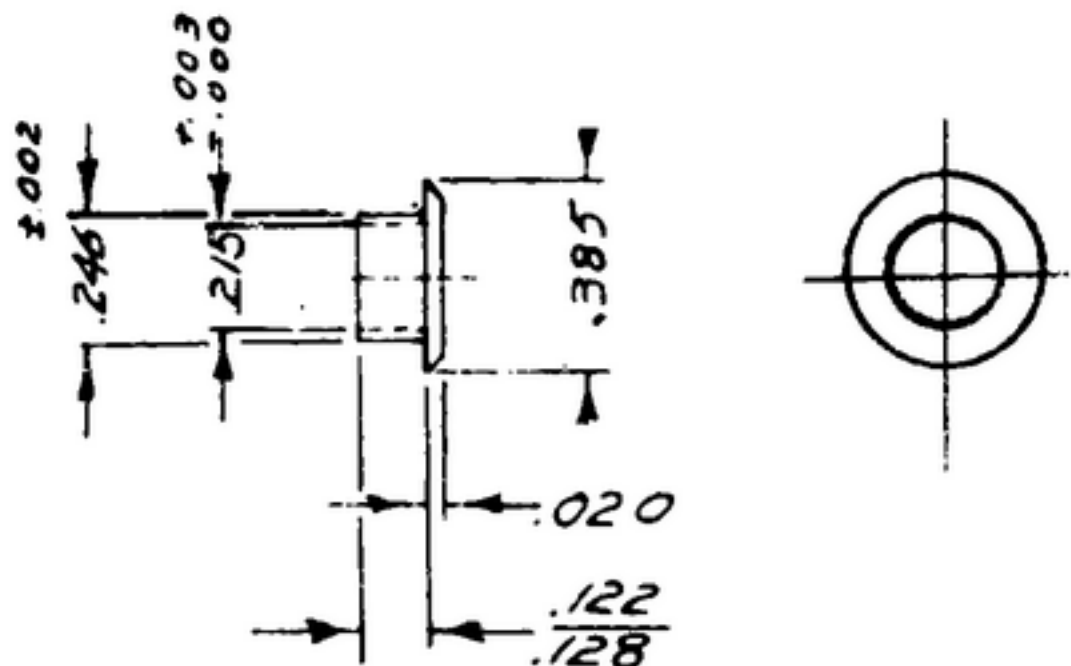
THIS DRAWING HAS BEEN PREPARED BY THE CONTRACTOR AND IS NOT TO BE USED FOR ANY OTHER PURPOSE WITHOUT THE WRITTEN APPROVAL OF THE CONTRACTOR.

* FOR INFORMATION ONLY. CONTRACTOR MAY AT HIS OPTION DEVIATE FROM THESE PROCESS DETAILS.

REVISIONS

*SHE APPROVAL	
SYM	PR10042-10
A	CA 85103

SYM	DESCRIPTION	DATE	APPROVAL
		15 MAR 61	42428-PC-59 REV'D: LE
A	(1) FINISH M262 WAS M252		
B	(1) FINISH M352 WAS M252	15 APR 66	6-00189 REV'D: [Signature]



NOTES.

1. PART MAY BE # 5E 84 AS SUPPLIED BY UNITED SHOE MACHINERY CORP, BOSTON MASS, OR EQUAL, PROVIDING IT MEETS THE FOLLOWING REQUIREMENTS & DIMENSIONS SHOWN.

DESCRIPTION: ROLLED FLANGE EYELET.
MATERIAL: BRASS
FINISH: M352 PER SPEC MIL-F-14072.

(B)

~~EAC No. 1500 10 38~~

ROLLING PART NO.	USE	REQD	PART NO.	SYMBOL	DATE	DATE SPEC.
LIST OF MATER						
ROLLING PART NO. 559 0231 002						

DRAWN ECS				CHECKED <i>[Signature]</i>		APPROVED		LOLLING RANGING 14214-PH-51-93 SIGNAL CORPS REVIEWED PME APPROVED HLV PME		DEPARTMENT OF THE ARMY SIGNAL CORPS ENGINEERING LABORATORIES FORT MONMOUTH NEW JERSEY SM-B-283152	
UNLESS OTHERWISE SPECIFIED: DECIMAL DIMENSIONS INCLUDING HOLE SIZES MAY VARY ± .001 FRACTIONAL DIMENSIONS INCLUDING HOLE SIZES MAY VARY ± .002 MACHINED ANGLES MAY VARY ± 1° SHEARED ANGLES MAY VARY ± 1° BROKEN ANGLES MAY VARY ± 1° CONCENTRICITY BETWEEN ANY DIAMETERS IN THE SAME CENTERLINE SHALL NOT EXCEED ONE TOTAL IN FOUR IN MEASURING ALL DIMENSIONS ARE FINISH DIMENSIONS INCLUDING APPROPRIATE FINISH AND ARE GIVEN IN INCHES				APPLICATION 558 0136 004 3 SMD 249085 SC DL 218175 ROLLING NO. QTY NEXT ASSY USED ON		DATE 17 JAN 56 SCALE 2/1					

WHEN REFERRING TO THIS DRAWING STATE DRAWING NO., APPLICABLE ISSUE SYMBOL IF ANY AND DATE