

DT 1.5

EQUIP. TYPE *P-390A/URR* EXP. NO.

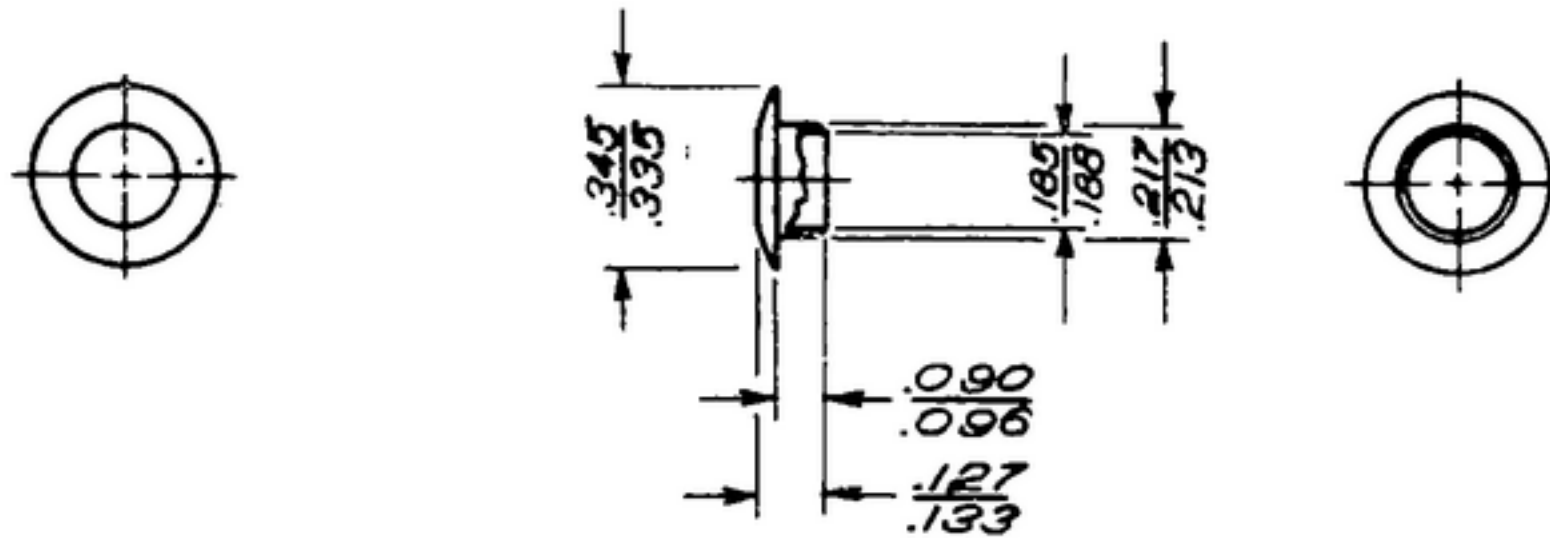
COL. 307-1060-00

NOTICE: WHEN GOVERNMENT DRAWINGS, SPECIFICATIONS, OR OTHER DATA ARE USED FOR ANY PURPOSE OTHER THAN IN CONNECTION WITH A DEFINITELY RELATED GOVERNMENT PROCUREMENT OPERATION, THE UNITED STATES GOVERNMENT THEREBY INCURS NO RESPONSIBILITY FOR ANY OMISSION, UNAUTHORIZED AND THE FACT THAT THE GOVERNMENT MAY HAVE FORMULATED, FURNISHED, OR IN ANY WAY SUPPLIED THE SAID DRAWINGS, SPECIFICATIONS, OR OTHER DATA IS NOT TO BE REGARDED BY IMPLICATION OR OTHERWISE AS IN ANY MANNER LICENSING THE HOLDER OR ANY OTHER PERSON OR CORPORATION, OR CONVEYING ANY RIGHTS OR PERMISSION TO REPRODUCE, COPY, USE, OR SELL ANY PATENTED INVENTION THEY MAY IN ANY WAY BE RELATED THERETO.

THIS DOCUMENT HAS BEEN PURCHASED BY THE GOVERNMENT AND MAY BE REPRODUCED AND USED IN CONNECTION WITH ANY GOVERNMENT PROCUREMENT OR BANTERSHARE OPERATION.

*FOR INFORMATION ONLY. CONTRACTOR MAY AT HIS OPTION DEVIATE FROM THESE PROCESS DETAILS.

REVISIONS			
SYM	DESCRIPTION	DATE	APPROVAL



NOTES.

1. PART MAY BE *5E-73 AS SUPPLIED BY UNITED SHOE MACHINERY CORP, BOSTON, MASS, OR EQUAL, PROVIDING IT MEETS THE FOLLOWING REQUIREMENTS & DIMENSIONS SHOWN.

MATERIAL: BRASS 0.011 THICK
FINISH: M262 PER SPEC MIL-F-14072.

COLLINE PART NO.	ITEM	QTY	PART NO.	DESCRIPTION	MATL	MATL SPEC
LIST OF MATER.						COLLINE PART NO. <i>559-0230-002</i>

DRAWN <i>NUGEN</i>				CHECKED <i>[Signature]</i>	APPROVED	COLLINE-RADIO CO. SEASIDE RAPIDS, IOWA <i>14214-DH-51-93</i>	EYELET	DEPARTMENT OF THE ARMY SIGNAL CORPS ENGINEERING LABORATORIES
UNLESS OTHERWISE SPECIFIED: DECIMAL DIMENSIONS INCLUDING HOLE SIZES MAY VARY ±.008 FRACTIONAL DIMENSIONS INCLUDING HOLE SIZES MAY VARY ±1/64 MACHINED ANGLES MAY VARY ±.1° SHEARED ANGLES MAY VARY ±.25° BROKEN ANGLES MAY VARY ±.1° ECCENTRICITY BETWEEN ANY DIAMETERS ON THE SAME CENTERLINE SHALL NOT EXCEED .010 TOTAL INDICATOR READING. ALL DIMENSIONS ARE FINISH DIMENSIONS INCLUDING APPLIED FINISH AND ARE GIVEN IN INCHES.				SIGNAL CORPS		REVIEWED <i>PNE</i>		FORT MONMOUTH NEW JERSEY
<i>SM-B-143801 SC-DL-143280</i>				APPROVED <i>HLV</i>		<i>PME</i>		<i>SM-B-283151</i>
<i>5580358005</i> - <i>SM-C-249009 SC-DL-248775</i>				DATE <i>17 JAN 56</i>		SCALE <i>2/1</i>		
COLLINE NO.	QTY	NEXT ASSY	USED ON	APPLICATION				

FD-700 (REV. 2-27-54) (47) (47)

WHEN REFERRING TO THIS DRAWING STATE DRAWING NO., APPLICABLE ISSUE SYMBOL, IF ANY, AND DATE