

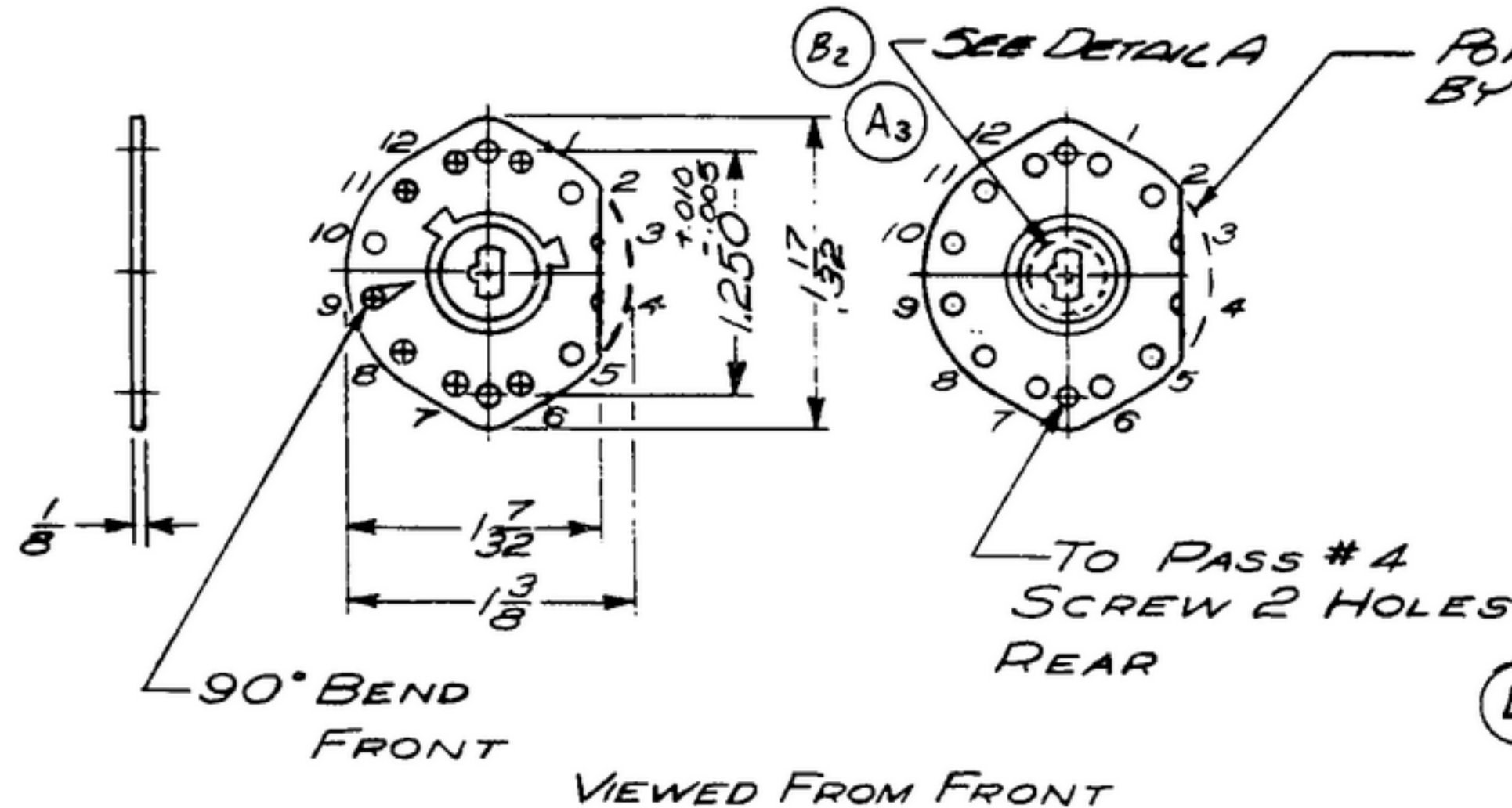
NOTICE: WHEN GOVERNMENT DRAWINGS, SPECIFICATIONS, OR OTHER DATA ARE USED FOR ANY PURPOSE OTHER THAN IN CONNECTION WITH A DEFINITELY RELATED GOVERNMENT PROCUREMENT OPERATION, THE UNITED STATES GOVERNMENT THEREBY INCURS NO RESPONSIBILITY FOR ANY OBLIGATION WHATSOEVER, AND THE FACT THAT THE GOVERNMENT MAY HAVE FORMULATED, FURNISHED, OR IN ANY WAY SUPPLIED THE SAID DRAWINGS, SPECIFICATIONS, OR OTHER DATA IS NOT TO BE REGARDED BY IMPLICATION OR OTHERWISE AS IN ANY MANNER LICENSING THE HOLDER OR ANY OTHER PERSON OR CORPORATION, OR CONVEYING ANY RIGHTS OR PERMISSION TO MANUFACTURE, USE, OR SELL ANY PATENTED INVENTION THAT MAY IN ANY WAY BE RELATED THERETO.

THIS DOCUMENT HAS BEEN PURCHASED BY THE GOVERNMENT AND MAY BE REPRODUCED AND USED IN CONNECTION WITH ANY GOVERNMENT PROCUREMENT OR MAINTENANCE OPERATION.

*FOR INFORMATION ONLY. CONTRACTOR MAY AT HIS OPTION DEVIATE FROM THESE PROCESS DETAILS.

REVISIONS

SYM	DESCRIPTION	DATE	APPROVAL
*SWE APPROVAL			
A	(1) WAS $\frac{.188}{.186}$ DIM. & "REF" ADDED (2) "REF" ADDED (3) NOTE # 2 ADDED	16 OCT 60	42428-PC-59 -P1-5! REV'D PME
B	(1) DELETED NOTE, PRODUCTION TESTING SHALL CONSIST ETC. (2) DELETED NOTE 2 (3) ADDED NOTE 3. (4) ADDED NOTE 4. (5) REF REMOVED 2 PLACES, $\frac{.188}{.190}$ WAS $\frac{.188}{.191}$	7 DEC. 60	42428-PC-59 REV'D PME



PORTION REMOVED BY SUPPLIER.

NOTES:

1. PART MAY BE #71052-NC, AS SUPPLIED BY OAK MFG. CO., CHICAGO, ILL., OR EQUAL, PROVIDING IT MEETS THE FOLLOWING REQUIREMENTS AND DIMENSIONS SHOWN.

DESCRIPTION: 1 CIRCUIT (1 POLE), 12 POSITION ROTARY WAFER SWITCH SECTION.

INSULATION: STEATITE, GRADE L-4B OR BETTER IN ACCORDANCE WITH JOINT ARMY-NAVY SPECIFICATION JAN-1-10, TREATED WITH DOW-CORNING DC-200, AS SUPPLIED BY DOW-CORNING CORP., CHICAGO, ILL., OR EQUAL, IN STRICT ACCORDANCE WITH MANUFACTURER'S RECOMMENDATIONS.

CLIPS: SPRING SILVER ALLOY, BENT 60° - 75°. (LONG CLIP ON POSITION 9 TO BE BENT 90°).

ROTOR BLADES: SHORTING TYPE, COIN SILVER ALLOY.

PRODUCTION TESTING SHALL CONSIST OF THE FOLLOWING: VISUAL INSPECTION, INDEXING AND FUNCTION.

OPERATING TEMPERATURE RANGE: -55°C TO +100°C.

EVIDENCE OF CRACKING OR CHIPPING OF THE MATERIAL SHALL BE CAUSE FOR REJECTION.

*SAMPLE MUST BE SUBMITTED TO CONTRACTOR'S ENGINEERING DEPARTMENT FOR APPROVAL BEFORE SHIPMENT OF PRODUCTION UNITS.

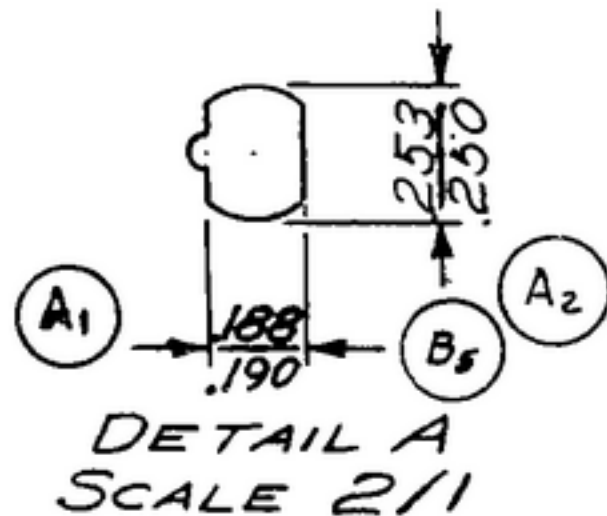
2.

3. CENTER HOLE MUST BE PERPENDICULAR (90°) TO WAFER WITHIN ±1°.

4. ALL CONTACTS MUST BE LOCATED IN POSITIONS SHOWN. CENTERS OF ENGAGEMENT AREAS OF CONTACT CLIPS MUST BE MAINTAINED AT 15° AND/OR 30° STARTING FROM WAFER MOUNTING CENTERS. TOLERANCES NON-CUMULATIVE.

KEY TO SYMBOLS

- ⊕ SHORT CLIP
- ⊕ LONG CLIP
- NO CLIP



COLLINS PART NO.	ITEM	REQD.	PART NO.	DESCRIPTION	QTY.	UNIT PRICE
LIST OF MATERIAL						
						COLLINS PART NO. <u>559-0175-602</u>

DRAWN NUGEN				CHECKED <i>[Signature]</i>		APPROVED		-COLLINS-RADIG-GR. CEDAR-RAPIDS-IOWA 14214-PH-51-93		DEPARTMENT OF THE ARMY SIGNAL CORPS ENGINEERING LABORATORIES FORT MONMOUTH NEW JERSEY	
UNLESS OTHERWISE SPECIFIED: DECIMAL DIMENSIONS INCLUDING HOLE SIZES MAY VARY ±.005 FRACTIONAL DIMENSIONS INCLUDING HOLE SIZES MAY VARY ±1/64 MACHINED ANGLES MAY VARY ±1° SHEARED ANGLES MAY VARY ±.25° BROKEN ANGLES MAY VARY ±1° ECCENTRICITY BETWEEN ANY DIAMETERS ON THE SAME CENTERLINE SHALL NOT EXCEED .010 TOTAL INDICATOR READING. ALL DIMENSIONS ARE FINISH DIMENSIONS INCLUDING APPLIED FINISH AND ARE GIVEN IN INCHES.				SIGNAL CORPS		REVIEWED PME		APPROVED HLV PME			
558-0451004-5 SM-D-249100 SC-DX-248775				DATE 12 JAN 56		SCALE 1/1					
APPLICATION											