

EQUIP. TYPE *R-5900/1023* EXP. NO. _____

COL. 265-1023-00

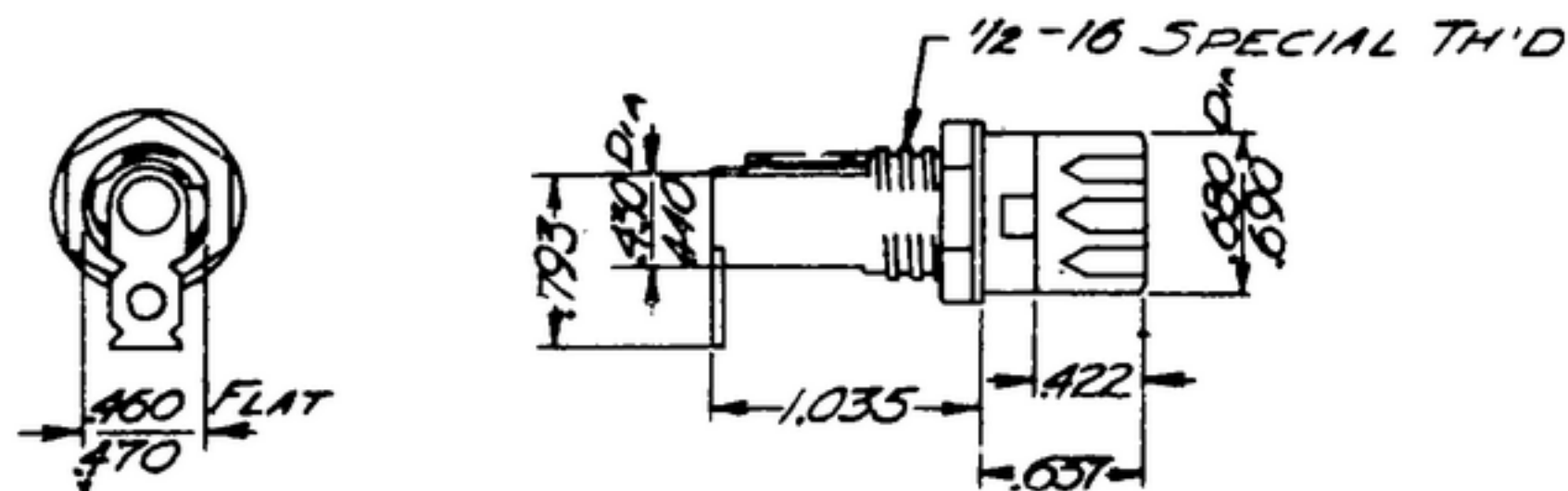
NOTICE: WHEN GOVERNMENT DRAWINGS, SPECIFICATIONS, OR OTHER DATA ARE USED FOR ANY PURPOSE OTHER THAN IN CONNECTION WITH A DEFINITELY RELATED GOVERNMENT PROCUREMENT OPERATION, THE UNITED STATES GOVERNMENT THEREBY INCURS NO RESPONSIBILITY FOR ANY OBLIGATION WHATSOEVER; AND THE FACT THAT THE GOVERNMENT MAY HAVE FORMULATED, PUBLISHED, OR IN ANY WAY SUPPLIED THE SAID DRAWINGS, SPECIFICATIONS, OR OTHER DATA IS NOT TO BE REGARDED AS IMPLICATION OR OTHERWISE AS IN ANY MANNER LICENSING THE HOLDER OR ANY OTHER PERSON OR ORGANIZATION, OR CONFERRING ANY RIGHTS OR PERMISSION TO MANUFACTURE, USE, OR SELL ANY PATENTED INVENTION THAT MAY IN ANY WAY BE RELATED THERETO.

THIS DOCUMENT HAS BEEN PURCHASED BY THE GOVERNMENT AND MAY BE REPRODUCED AND USED IN CONNECTION WITH ANY GOVERNMENT PROCUREMENT OR MAINTENANCE OPERATION.

*FOR INFORMATION ONLY. CONTRACTOR MAY AT HIS OPTION DEVIATE FROM THESE PROCESS DETAILS.

~~*SWE APPROVAL~~
~~SYM PR10042-7~~

REVISIONS			
SYM	DESCRIPTION	DATE	APPROVAL
A ₁	A ₁ - WAS MIL-P-14	19 OCT. 59	42428-PC-59-A1-51 REVID. PME



WITH FUSE IN POSITION

NOTES:

1. PART MAY BE NO. 342003, AS SUPPLIED BY LITTELFUSE INC., CHICAGO, ILL., OR EQUAL PROVIDING IT MEETS THE FOLLOWING REQUIREMENTS AND DIMENSIONS SHOWN.

DESCRIPTION: EXTRACTOR POST FUSE HOLDER WITH TEST HOLE IN KNOB WITH 1-1/4" X 1/4" FUSE. (A₁)

INSULATION: PNEOLIC, TYPE CFG IN ACCORDANCE WITH MILITARY SPECIFICATION MIL-M-14.

TERMINALS: BRASS, FINISH: CADMIUM PLATE TYPE 1, CLASS B PER SPEC-QQ-P-416, TAILS W317 PER SPEC MIL-F-14072.

RATING: 15 AMPERES MAX., 250 VOLTS MAX.

MOUNTING HARDWARE: NUT AND INTERNAL TOOTH LOCKWASHER--STEEL, FINISH: M262 PER SPEC MIL-F-14072.

PART SHALL BE CAPABLE OF WITHSTANDING 50 HOUR SALT SPRAY TEST IN ACCORDANCE WITH FEDERAL SPECIFICATION QQ-MH51 WITHOUT SHOWING EVIDENCE OF HARMFUL CORROSION. ALL ORGANIC MATERIALS SHALL BE FUNGUS INERT OR TREATED TO BE FUNGUS RESISTANT WITH VARNISH IN ACCORDANCE WITH MILITARY SPECIFICATION MIL-V-173, TYPE I.

COLLINS PART NO.	ITEM	QTY	PART NO.	DESCRIPTION	MATL	MATL QTY
LIST OF MATERIAL						
COLLINS PART NO. <i>559-0165-002</i>						

DRAWN <i>HENRY</i>				CHECKED <i>PME</i>		APPROVED		COLLINS-RADIO CO. -8808 RAINBOW, IOWA <i>14214-PH</i> <i>51-93</i>		<i>HOLDER-FUSE</i>	DEPARTMENT OF THE ARMY SIGNAL CORPS ENGINEERING LABORATORIES FORT MONMOUTH NEW JERSEY	
UNLESS OTHERWISE SPECIFIED: DECIMAL DIMENSIONS INCLUDING HOLE SIZES MAY VARY ±.008 FRACTIONAL DIMENSIONS INCLUDING HOLE SIZES MAY VARY ±1/64 MACHINED ANGLES MAY VARY ±.1° SHEARED ANGLES MAY VARY ±.25° BROKEN ANGLES MAY VARY ±1.° ECCENTRICITY BETWEEN ANY DIAMETERS ON THE SAME CENTERLINE SHALL NOT EXCEED .010 TOTAL INDICATOR READING. ALL DIMENSIONS ARE FINISH DIMENSIONS INCLUDING APPLIED FINISH AND ARE GIVEN IN INCHES.												
REVIEWED <i>PME</i>		APPROVED <i>HLV</i> <i>PME</i>		DATE <i>12 JAN 56</i>		SCALE <i>1/1</i>						
APPLICATION												