

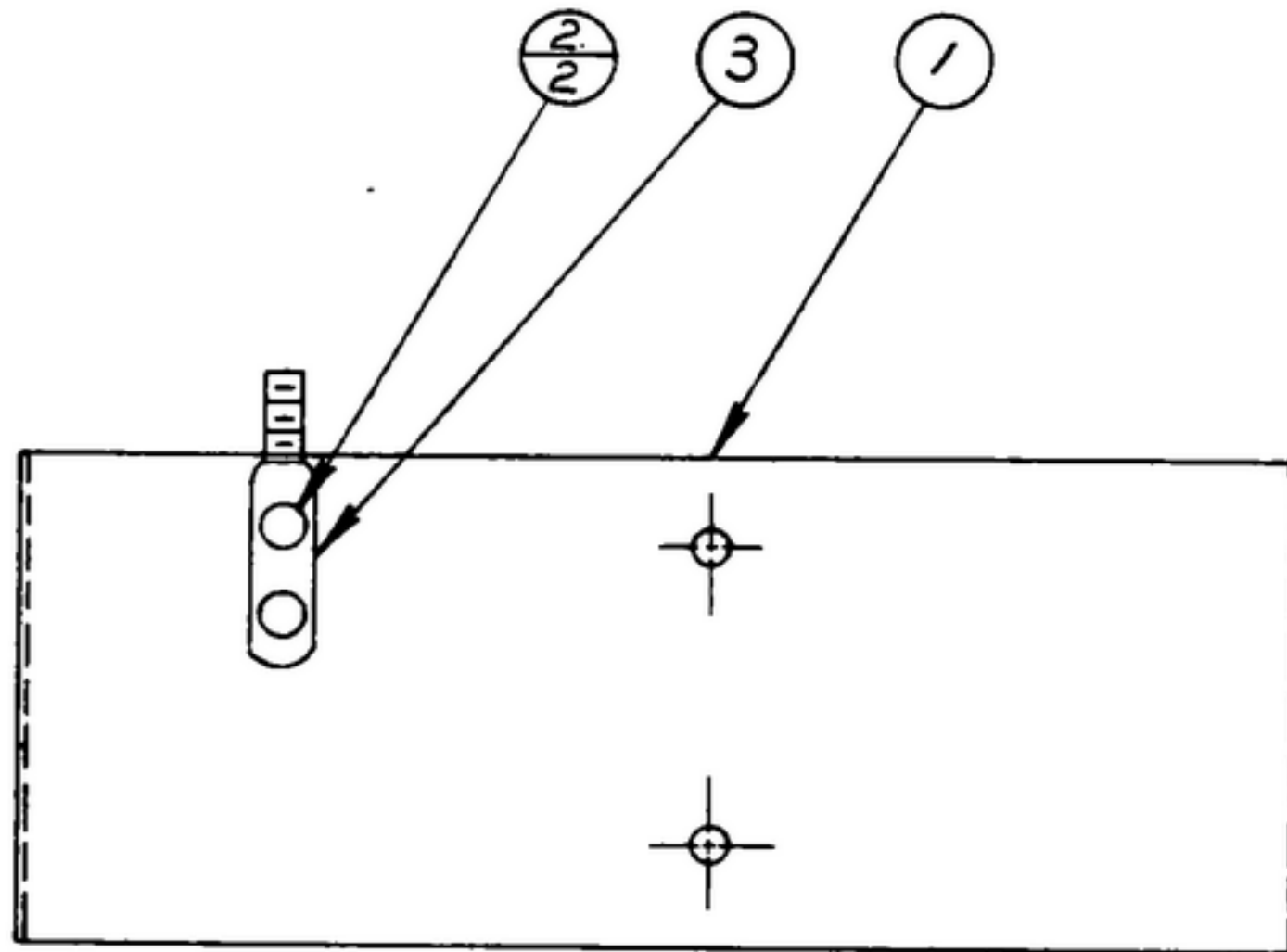
NOTICE: WHEN GOVERNMENT DRAWINGS, SPECIFICATIONS, OR OTHER DATA ARE USED FOR ANY PURPOSE OTHER THAN IN CONNECTION WITH A SPECIFICALLY RELATED GOVERNMENT PROCUREMENT OPERATION, THE UNITED STATES GOVERNMENT THEREBY ASSUMES NO RESPONSIBILITY FOR ANY OMISSION, WHATEVER, AND THE FACT THAT THE GOVERNMENT MAY HAVE FORMULATED, PROMULGATED, OR IN ANY WAY SUPPLIED THE SAID DRAWING, SPECIFICATIONS, OR OTHER DATA IS NOT TO BE REGARDED BY INDICATION OR OTHERWISE AS IN ANY MANNER LICENSING THE HOLDER OR ANY OTHER PERSON OR CORPORATION, OR CONVEYING ANY RIGHTS OR PERMISSION TO MANUFACTURE, USE, OR SELL ANY PATENTED INVENTION THAT MAY IN ANY WAY BE RELATED THEREBY.

THIS DOCUMENT HAS BEEN PURCHASED BY THE GOVERNMENT AND MAY BE REPRODUCED AND USED IN CONNECTION WITH ANY GOVERNMENT PROCUREMENT OR MAINTENANCE OPERATION.

* FOR INFORMATION ONLY. CONTRACTOR MAY AT HIS OPTION DEVIATE FROM THESE PROCESS DETAILS.

~~* SWE APPROVAL~~
~~SYM PR 10042-2~~

REVISIONS			
SYM	DESCRIPTION	DATE	APPROVAL
A ₂	A ₁ ITEM 2 WAS SM-B-249261 A ₂ ADDED APPL SM-D-343620	10 OCT 59	4242B-PC 59-AI-51 REV'D PME



NOTES:

1. ROLL BOLT (3) TO SHIELD (1) USING RIVETS (2) AS SHOWN.
2. IN ALL SPLIT BALLOONS, TOP FIGURE IS MATERIAL LIST ITEM INDICATOR & BOTTOM FIGURE IS QUANTITY.

COLLINS PART NO.	ITEM	QTY	PART NO.	DESCRIPTION	MATL	MATL SPEC	NOTES
558 0250 002	3	1	SM-B-283163	BOLT - SPADE			
558 8215 002	2	2	MS20450C8AD4	RIVET - TUBULAR			
558 0363 003	1	1	SM-G-249011	SHIELD - I.F.			

LIST OF MATERIAL

COLLINS PART NO. ~~558 0343 002~~

DRAWN <i>ECS</i>				CHECKED <i>Rem</i>		APPROVED		COLLINS RADIO CO. -CEDAR RAPIDS, IOWA- 14214-PH-51-93		SHIELD ASSY-I.F.		DEPARTMENT OF THE ARMY SIGNAL CORPS ENGINEERING LABORATORIES FORT MONMOUTH NEW JERSEY	
UNLESS OTHERWISE SPECIFIED: DECIMAL DIMENSIONS INCLUDING HOLE SIZES MAY VARY ±.008 FRACTIONAL DIMENSIONS INCLUDING HOLE SIZES MAY VARY ±1/64 MACHINED ANGLES MAY VARY ±.1° SHEARED ANGLES MAY VARY ±.25° BROKEN ANGLES MAY VARY ±.1° ECCENTRICITY BETWEEN ANY DIAMETERS ON THE SAME CENTERLINE SHALL NOT EXCEED .010 TOTAL INDICATOR READING. ALL DIMENSIONS ARE FINISH DIMENSIONS INCLUDING APPLIED FINISH AND ARE GIVEN IN INCHES.				REVIEWED <i>PME</i>		APPROVED <i>HLV</i> <i>PME</i>		DATE 20 DEC 55					
COLLINS NO.	QTY	NEXT ASSY	USED ON	APPLICATION									
558-0363-004	1	SM-D-248818	SC-DL-248775										