

EQUIP. TYPE ~~799-6497~~ EXP. NO.

Col. 50-0716, 729, 749-003

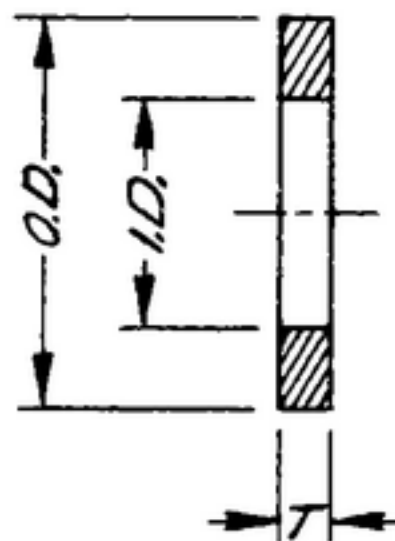
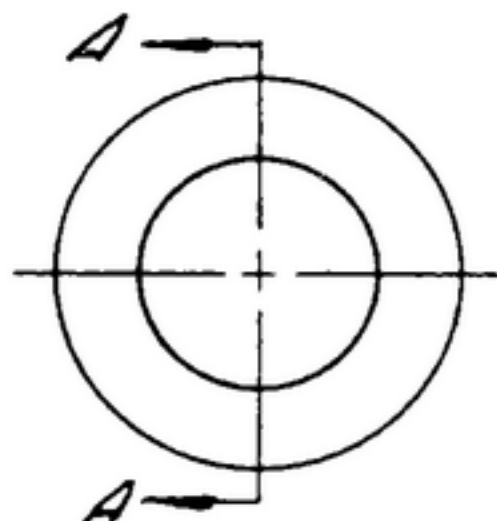
NOTICE: WHEN GOVERNMENT DRAWINGS, SPECIFICATIONS, OR OTHER DATA ARE USED FOR ANY PURPOSE OTHER THAN IN CONNECTION WITH A DEFINITELY RELATED GOVERNMENT PROCUREMENT OPERATION, THE UNITED STATES GOVERNMENT THEREBY INCURS NO RESPONSIBILITY FOR ANY DELAY OR INADEQUACY, AND THE FACT THAT THE GOVERNMENT MAY HAVE FORMULATED, FURNISHED, OR IN ANY WAY SUPPLIED THE SAID DRAWINGS, SPECIFICATIONS, OR OTHER DATA IS NOT TO BE REGARDED BY IMPLICATION OR OTHERWISE AS IN ANY MANNER LICENSING THE HOLDER OR ANY OTHER PERSON OR CORPORATION, OR CONFERRING ANY RIGHTS OR PERMISSION TO MANUFACTURE, USE, OR SELL ANY PATENTED INVENTION THAT MAY IN ANY WAY BE RELATED THERETO.

THIS DOCUMENT HAS BEEN PURCHASED BY THE GOVERNMENT AND MAY BE REPRODUCED AND USED IN CONNECTION WITH ANY GOVERNMENT PROCUREMENT OR MAINTENANCE OPERATION.

* FOR INFORMATION ONLY, CONTRACTOR MAY AT HIS OPTION DEVIATE FROM THESE PROCESS DETAILS.

~~*SWE APPROVAL~~
~~SYM PR10042-7~~

REVISIONS			
SYM	DESCRIPTION	DATE	APPROVAL
A ₂	A ₁ REVISED APPL. A ₂ ADDED "SEE NOTES."	19 OCT 59	42428-PC 59-AI-SI REV'D PME



NOTES:

1. STEEL, COMP 3035, COND B, SURFACE COND, PER SPEC MIL-S-7720.
2. STEEL, COMP, 302, COND. ANNEALED, PER SPEC MIL-D-5059.
3. REMOVE ALL BURRS.
4. PART MUST BE FLAT WITHIN .003 T.I.R.
5. FINISH: E300 PER SPEC. MIL-F-14072.

* COLLINS 558-0056-00

*SWE PART NO.	COLLINS PART NO.	DASH NO.	O. D.	I. D.	T	MATERIAL	FINISH
572849-12	558 0056 002	SM-B-248829-1	.343	.187 ^{+0.003} _{-.000}	.012	SEE NOTE 1	SEE NOTE 5
572849-25	558 0059 002	-2	1/4	.125 ^{+0.003} _{-.000}	.031 ^{+0.003}	SEE NOTE 2	SEE NOTE 5
572849-45	558 0063 002	-3	7/8	.505	.032 ^{+0.007}	SEE NOTE 2	SEE NOTE 5

(A₁)

COLLINS NO.	QTY	NEXT ASSY	USED ON
558 0468 004	2		SC-DL-143280
558 0321 004	4		SC-DL-144500
558 0162 002	1		SC-DL-248775

UNLESS OTHERWISE SPECIFIED:
 DECIMAL DIMENSIONS INCLUDING HOLE SIZES MAY VARY ±.008
 FRACTIONAL DIMENSIONS INCLUDING HOLE SIZES MAY VARY ±1/64
 MACHINED ANGLES MAY VARY ±.1°
 SHEARED ANGLES MAY VARY ±.25°
 BROKEN ANGLES MAY VARY ±.1°
 ECCENTRICITY BETWEEN ANY DIAMETERS ON THE SAME CENTERLINE SHALL NOT EXCEED .010 TOTAL INDICATOR READING.
 ALL DIMENSIONS ARE FINISH DIMENSIONS INCLUDING APPLIED FINISH AND ARE GIVEN IN INCHES.

COLLINS PART NO.	ITEM	QTY	PART NO.	DESCRIPTION	MATL	MATL SPEC
LIST OF MATERIAL						
						558-0056-0059
						0063-002
DRAWN R CHILL				CHECKED Shelton	APPROVED	
-COLLINS-RADIO-CO.- -CEDAR-RAPIDS-IOWA-				14214-PH-51-93		DEPARTMENT OF THE ARMY SIGNAL CORPS ENGINEERING LABORATORIES FORT MONMOUTH NEW JERSEY SM-B-248829
SIGNAL CORPS				REVIEWED PME		
APPROVED HLY PME				DATE 2 DEC 55		
SCALE						