

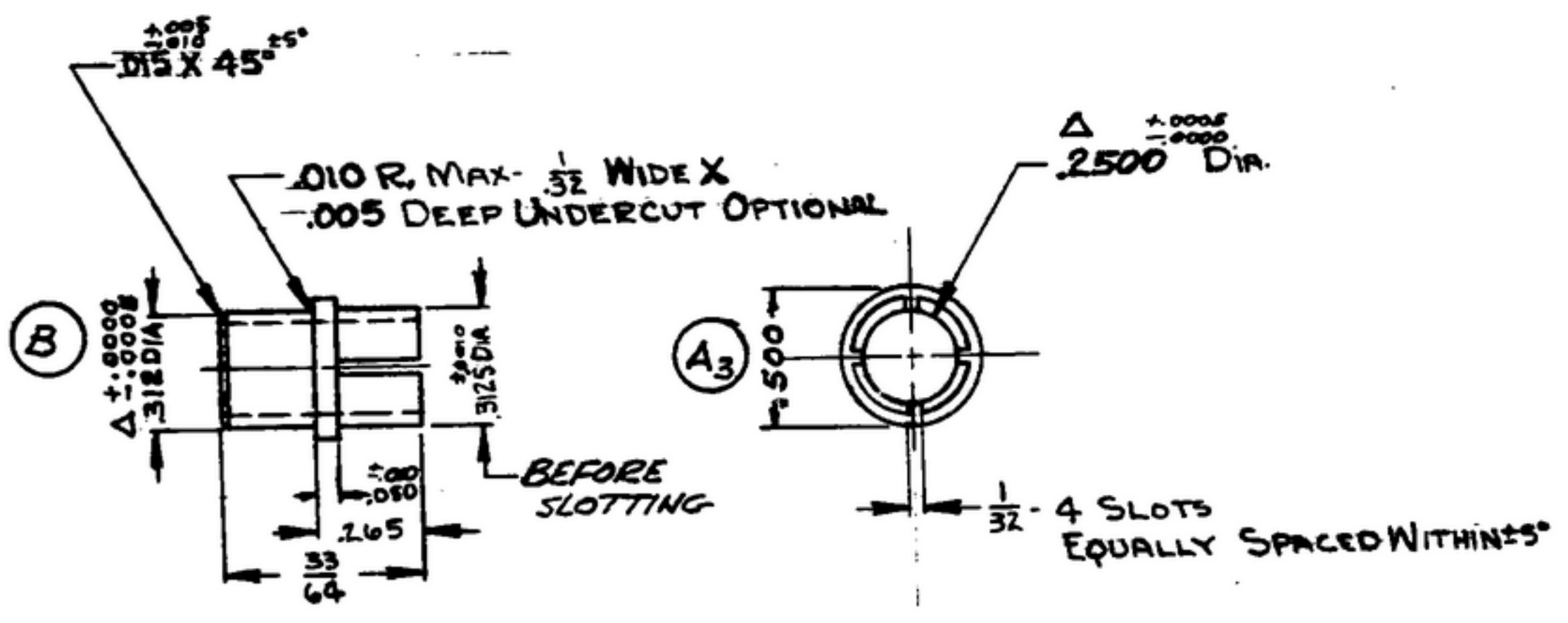
BM-3

5067332-002-R-39

NOTICE: WHEN GOVERNMENT DRAWINGS, SPECIFICATIONS, OR OTHER DATA ARE USED FOR ANY PURPOSE OTHER THAN IN CONNECTION WITH A DEFINITELY RELATED GOVERNMENT PROCUREMENT OPERATION, THE UNITED STATES GOVERNMENT THEREBY INCURS NO RESPONSIBILITY NOR ANY OBLIGATION WHATSOEVER, AND THE FACT THAT THE GOVERNMENT MAY HAVE FORMULATED, FURNISHED, OR IN ANY WAY SUPPLIED THE SAID DRAWINGS, SPECIFICATIONS, OR OTHER DATA IS NOT TO BE REGARDED BY IMPLICATION OR OTHERWISE AS IN ANY MANNER LICENSING THE HOLDER OR ANY OTHER PERSON OR CORPORATION, OR CONVEYING ANY RIGHTS OR PERMISSION TO MANUFACTURE, USE, OR SELL ANY PATENTED INVENTION THAT MAY IN ANY WAY BE RELATED THERETO.

NOTE: *FOR INFORMATION ONLY, CONTRACTOR MAY AT HIS OPTION DEVIATE FROM THESE PROCESS DETAILS

*SWE. APPROVAL		REVISIONS			
SYM	PR 10042-5	SYM	DESCRIPTION	DATE	APPROV
		A ₃	A ₁ - WAS COMP. FM, AN-S-771. A ₂ - ADDED APPL. SM-B-178978, SC-DL-248775 A ₃ - WAS .375	9 OCT. 59	42428-59-1 RE
B	CA. *84934	B	(1) - WAS .313 ± .001	30 NOV. 60	42428-60-1 RE



STEEL, COMP 303S, COND A OR B, PER SPEC MIL-S-7720 (A₁)

1- ECCENTRICITY BETWEEN DIAMETERS MARKED Δ ON SAME CENTER LINE SHALL NOT EXCEED .002 TIR

2- SLIGHT BURR PERMISSIBLE IN 1/32 SLOTS, REMOVE ALL OTHER BURRS & SHARP EDGES.

ITEM	QTY	DESCRIPTION	UNIT	REMARKS
LIST OF MATERIAL				

APPLICATION		UNLESS OTHERWISE SPECIFIED	AUTHENTICATION
		DIMENSIONS ARE IN INCHES TOLERANCES ON FRACTIONS DECIMALS ANGLES	DRAWN 21852-50-93
		± 1/64 ± .005	TRACED PHOTO
			CHECKED
			VERIFIED P. D. B. R.
			APPROVED P. D. B. R.
			REVIEWED P. M. E.
			DATE 27-OCT-53
			SCALE 2/1

SIGNAL CORPS ENGINEERING LABORATORIES
PORT MONMOUTH NEW JERSEY
SM-B-178979