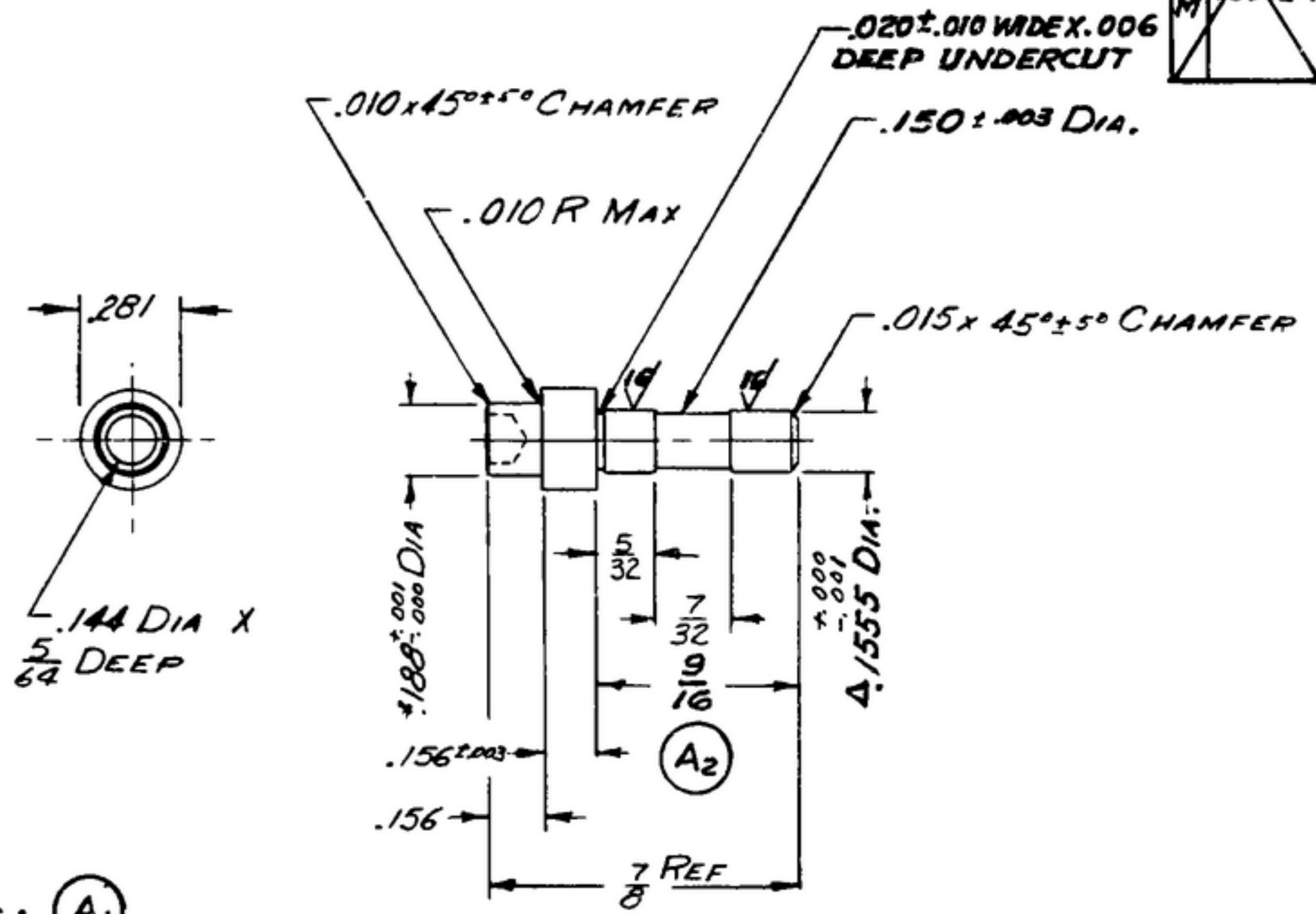


R-1 506 1933 D12

1.5

NOTICE: When Government drawings, specifications, or other data are used for any purpose other than in connection with a definitely related Government procurement operation, the United States Government thereby incurs no responsibility or obligation whatsoever, and the fact that the Government may have furnished, or in any way supplied the said drawings, specifications, or other data is not to be regarded by implication or otherwise as in any manner licensing the holder or any other person or corporation, or conveying any rights or permission to manufacture, use or sell any patented invention that may in any way be related thereto.

A ₃	NEXT ASSY	USED ON	SWE * APPROVAL	REVISIONS			
	SM-C-178893	SC-DL-178467		S/M	DESCRIPTION	DATE	APPROVAL
	SM-C-248966	SC-DL-248775	S Y M 10042-4	A ₄	A ₁ -RENUMBERED NOTES, A ₂ -9/16 WAS 9/32; A ₃ -ADDED APPL. SM-C-248966; SC-DL-248775. A ₄ -STEEL PER SPEC. WAS AN-S-771; AND FINISH WAS PER MIL-P-12011.	8 OCT 59	42428-PC-59-A1-51 REV'D. PME



- NOTES: (A₁)
- 1.-STEEL, COM. 3035, COND B, PER SPEC. MIL-S 7720. (A₄)
 - 2.-ECCENTRICITY BETWEEN DIAMETERS MARKED Δ ON SAME CENTERLINE SHALL NOT EXCEED .002 TIR
 - 3.-PART MUST BE FREE OF BURRS & SHARP EDGES.
 - 4.-FINISH: E 300 PER MIL -F-14072.
- (A₄)

NOTE:
*FOR INFORMATION ONLY,
CONTRACTOR MAY AT HIS
OPTION DEVIATE FROM
THESE PROCESS DETAILS

UNLESS OTHERWISE SPECIFIED	REQD.	PAR. NO.	DESCRIPTION	DATE	SPEC.	NOTE
DIMENSIONS ARE IN INCHES TOLERANCES ON FRACTIONS ± 1/64 DECIMALS ± .005 ANGLES ± _____ COMMERCIAL TOLERANCES APPLY TO STOCK SIZES ALL SURFACES ✓	AUTHENTICATION DRAWN 21852-PH-50-93 TRACED PHOTO CHECKED <i>Rm</i> VERIFIED P.D.BR. APPROVED P.D.BR. REVIEWED PME DATE 25-JUN-53		SHAFT		DEPARTMENT OF THE ARMY SIGNAL CORPS ENGINEERING LABORATORIES FORT MONMOUTH NEW JERSEY	
	SCALE 2/1	-See Note 2-			SM-B-178895	

WHEN REFERRING TO THIS DRAWING STATE DRAWING NO., APPLICABLE ISSUE SYMBOL AND DATE