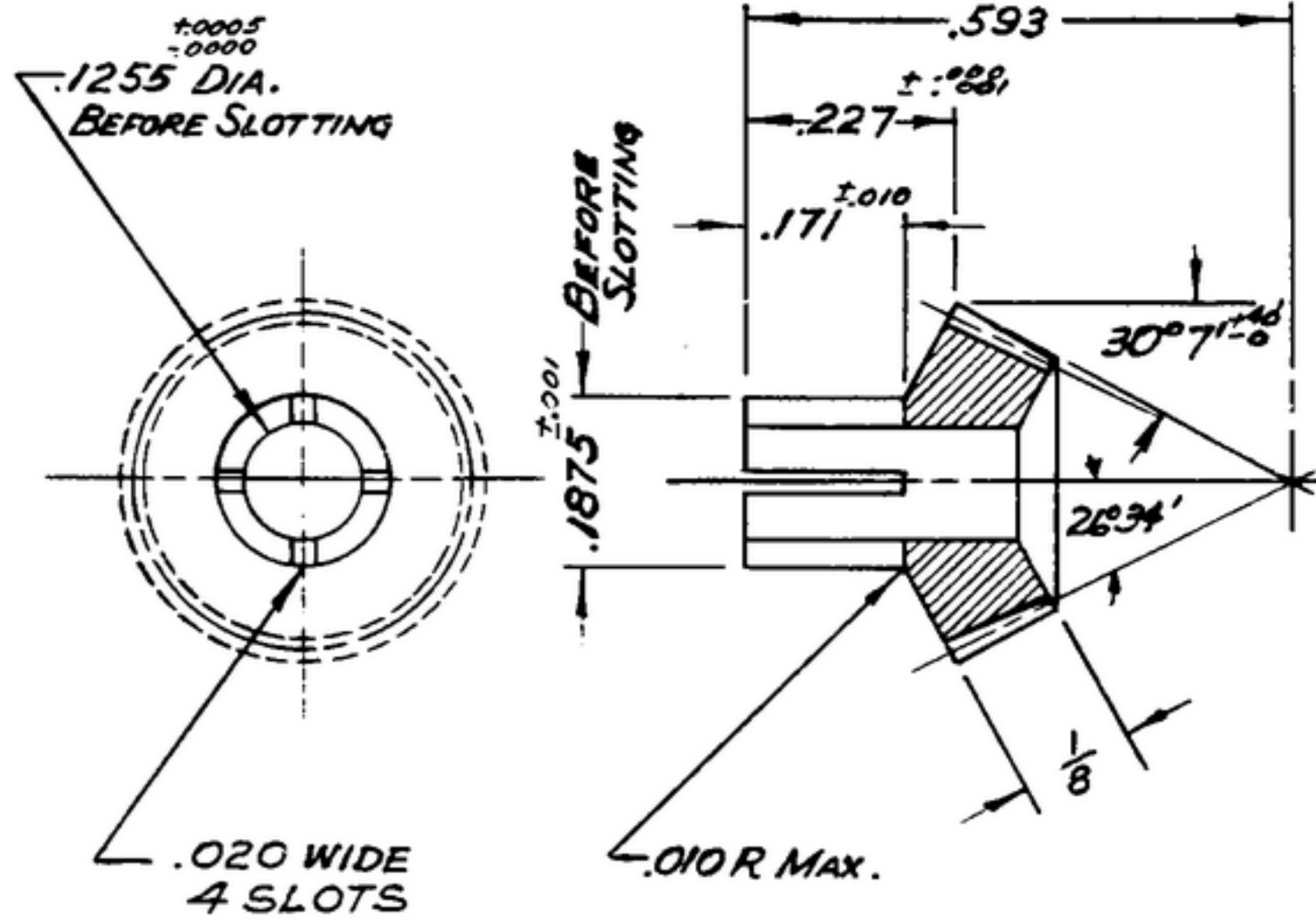


NOTICE: When Government drawings, specifications, or other data are used for any purpose other than in connection with a definitely related Government procurement operation, the United States Government thereby incurs no responsibility or any obligation whatsoever; and the fact that the Government may have formulated, furnished, or in any way supplied the said drawings, specifications, or other data is not to be regarded by implication or otherwise as in any manner licensing the holder or any other person or corporation, or conveying any rights or permission to manufacture, use or sell any patented invention that may in any way be related thereto.

NEXT ASSEMBLY		USED ON		REVISIONS			
SM-D-178679	SC-DL-178467	SM-D-343600	SC-DL-248775	SYM	DESCRIPTION	DATE	APPROVAL
				A ₂	A ₁ -NOTE 1 WAS "COMP. B", PER SPEC. QQ-B-611. A ₂ -ADDED APPL. SM-D-343600, SM-D-248975, SC-DL-248775.	8 OCT. 59	4242B-PC-59-A1-51 REV'D.
				B ₁	(1)-ADDED NOTE #5	14 OCT. 60	4242B-PC-59 REV'D. PHE



- NOTES:**
- 1.-BRASS, COMP 22, COND 1/2H, PER SPEC QQ-B-626.
 - 2.-NORMAL DIAMETRAL PITCH: 64
NORMAL PRESSURE ANGLE: 20°
NUMBER OF TEETH: 24
THEORETICAL PITCH DIAMETER: .375
BACKLASH .000 TO .001 WHEN REFERRED TO THEORETICAL PITCH CIRCLE.
CROWN TO BACK DIMENSION: .225
FACE ANGLE: 30° 7'
PITCH ANGLE: 26° 34'
MOUNTING DISTANCE: .593
AMERICAN STANDARD INVOLUTE TOOTH FORM.
ALL TERMS USED AS DEFINED BY AGMA STANDARDS.
 - 3.-ECCENTRICITY BETWEEN PITCH DIAMETER & BORE SHALL NOT EXCEED .002 TIR.
 - 4.-SLIGHT BURRS PERMISSIBLE IN .020 SLOTS, REMOVE ALL OTHER BURRS AND SHARP EDGES.
 - 5.-FINISH: CHEMICAL POLISH PER IRIDITE #7 METCOTE
- PROCESS BU ALLIED RESEARCH PRODUCTS INC., BALTIMORE, MD., OR EQUAL.

NOTE:
*FOR INFORMATION ONLY, CONTRACTOR MAY AT HIS OPTION DEVIATE FROM THESE PROCESS DETAILS

UNLESS OTHERWISE SPECIFIED	AUTHENTICATION	DESCRIPTION	MAR	SEC	NOV
DIMENSIONS ARE IN INCHES TOLERANCES ON FRACTIONS ± 1/64 DECIMALS ± .005 ANGLES ± — COMMERCIAL TOLERANCES APPLY TO STOCK SIZES ALL SURFACES ✓	DRAWN 21852-TH 50-92 TRACED PHOTO CHECKED [Signature] VERIFIED APPROVED REVIEWED DATE 8-JUL-53	GEAR			
	SCALE 4/1	90-585			
					SM-B-178707

DEPARTMENT OF THE ARMY
SIGNAL CORPS ENGINEERING LABORATORIES
FORT MONMOUTH NEW JERSEY