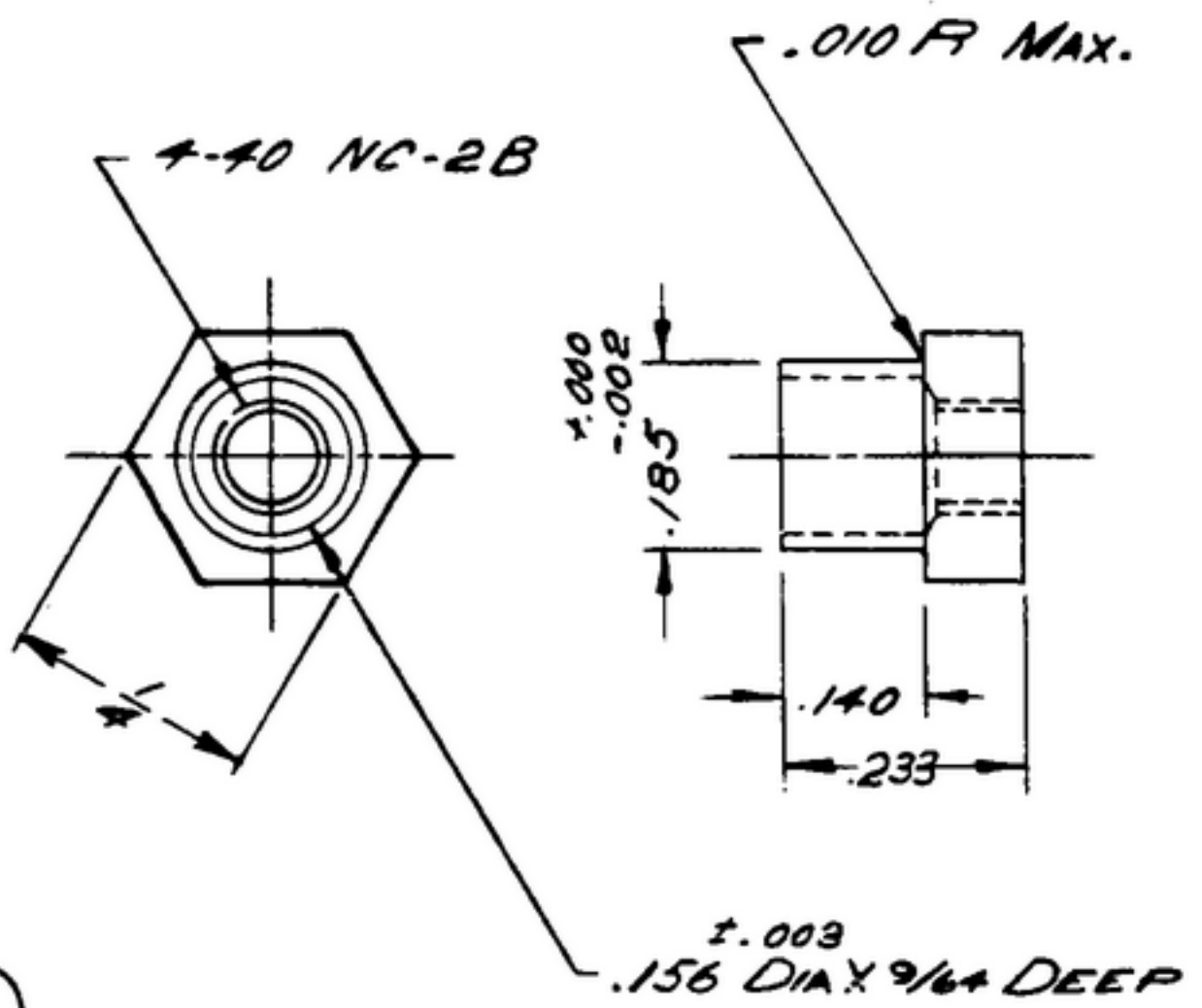


② 585 918 008 R-381

NOTICE: When Government drawings, specifications, or other data are used for any purpose other than in connection with a definitely related Government procurement operation, the United States Government thereby incurs no responsibility or any obligation whatsoever, and the fact that the Government may have furnished, or in any way supplied the said drawings, specifications, or other data is not to be regarded by implication or otherwise as in any manner favoring the holder or any other person or corporation, or conveying any rights or permission to manufacture, use or sell any patented invention that may in any way be related thereto.

NEXT ASSEMBLY	USED ON	SWE *	REVISIONS			
		APPROVAL	SYM	DESCRIPTION	DATE	APPROVAL
SM-B-178532	SC-DL-178467	SWE 100426	A ₂	A ₁ -ALUMINUM SPEC. WAS "COND.T" ADDED FINISH NOTE; A ₂ -ADDED APPL. SM-B-249000, SC-DL-248775;	15 OCT. 59	42428-PC-59-A-51 REV'D. PME
SM-B-178536						
SM-B-178630						
SM-B-249000	SC-DL-248775					



(A₁)

NOTES:

- 1.-ALUMINUM ALLOY 2017 CONDITION T4 PER SPEC. QQ-A-351.
- 2.- THREADS SHALL BE IN ACCORDANCE WITH SCREW THREAD STDS FOR FED SERVICES HANDBOOK H-28.
- 3.- FINISH E 513 PER MIL-F-14072.

NOTE:

*FOR INFORMATION ONLY, CONTRACTOR MAY AT HIS OPTION DEVIATE FROM THESE PROCESS DETAILS

REF.	PART NO.	DESCRIPTION	QTY	SPEC	NOTE
NUT					
DEPARTMENT OF THE ARMY SIGNAL CORPS ENGINEERING LABORATORIES FORT MONMOUTH NEW JERSEY					
SM-B-178533					

UNLESS OTHERWISE SPECIFIED	AUTHENTICATION
DIMENSIONS ARE IN INCHES	DRAWN 21852-PH-50-93
TOLERANCES ON FRACTIONS ± 1/64	TRACED PHOTO
DECIMALS ± .005	CHECKED <i>Man</i>
ANGLES ±	VERIFIED P.D.B.R.
COMMERCIAL TOLERANCES APPLY TO STOCK SIZES	APPROVED P.D.B.R.
ALL SURFACES ✓	REVIEWED PME
	DATE 26 MAY 53

WHEN REFERRING TO THIS DRAWING STATE DRAWING NO., APPLICABLE ISSUE SYMBOL AND DATE