

NOTE: WHEN GOVERNMENT DRAWINGS, SPECIFICATIONS OR OTHER DATA ARE USED FOR ANY PURPOSE OTHER THAN IN CONNECTION WITH A DEFENSE RELATED GOVERNMENT CONTRACT, THE UNITED STATES GOVERNMENT INCURS NO LIABILITY FOR ANY OMISSION, WHATSOEVER, AND THE FACT THAT THE GOVERNMENT HAS FORMULATED, PLANNED OR IN ANY WAY SUPPORTED THE USE OF DRAWINGS, SPECIFICATIONS OR OTHER DATA IS NOT TO BE REGARDED AS IN ANY MANNER LICENSES THE HOLDER OR ANY OTHER PERSON OR CORPORATION OR LOANER AS ANY RIGHTS OR PERMISSION TO REPRODUCE, TRANSMIT, OR SELL ANY PATENTED INVENTION THAT MAY IN ANY WAY BE RELATED THERE TO.

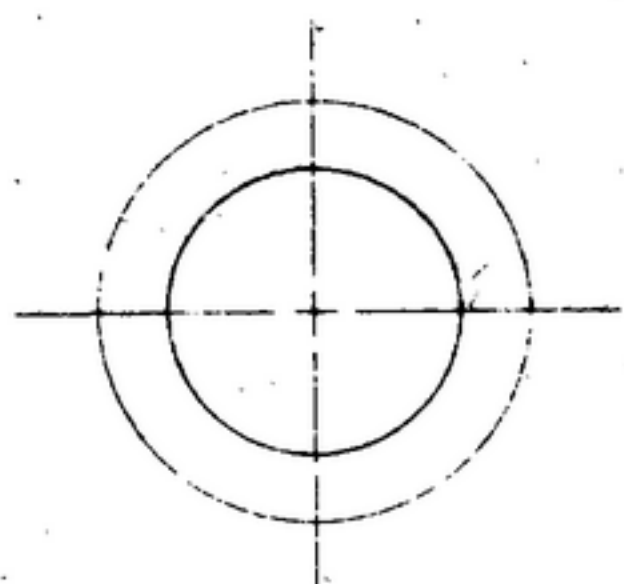
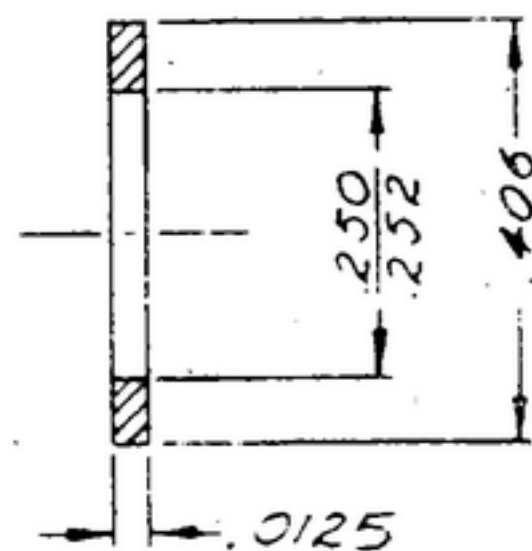
NOTE:

\*FOR INFORMATION ONLY.  
CONTRACTOR MAY AT HIS  
OPTION DEVIATE FROM  
THESE PROCESS DETAILS

~~\*SHE APPROVAL~~  
~~SYM PR1002 4~~

REVISIONS

SYM	DESCRIPTION	DATE	APPROVAL
A <sub>2</sub>	A <sub>1</sub> - REVISED NOTES A <sub>2</sub> - ADDED APPL, SM-D-343600, SM-D-343600, SM-D-248975, SM-D-249007, SC-DL-248775;	800759	#2428-PC -59-A1-51 REV'D PME



(A<sub>1</sub>)

NOTES:

1. STEEL COMP G, COND  $\frac{1}{4}$  H, PER SPEC MIL-S-5059.
2. FINISH: E-300 PER SPEC MIL-F-14072

QTY	PART NO.	DESCRIPTION	DATE	QTYL SPEC
LIST OF MATERIAL				
		<b>WASHER</b>	SIGNAL CORPS ENGINEERING LABORATORIES  PORT MONMOUTH NEW JERSEY  <b>SM-B-178411</b>	
UNLESS OTHERWISE SPECIFIED				
DIMENSIONS ARE IN INCHES				
TOLERANCES ON				
FRACTIONS	DECIMALS ANGLES			
±.005				
AUTHENTICATION		DATE		
DRAWN 2/832 PR 50-93		16 SEP 55		
TRACED PHOTO		SCALE 4/1		
CHECKED Rbm				
VERIFIED P.D.BR				
APPROVED P.D.BR				
REVIEWED PME				
DATE				
NEXT ASSY				
USED ON				
APPLICATION				