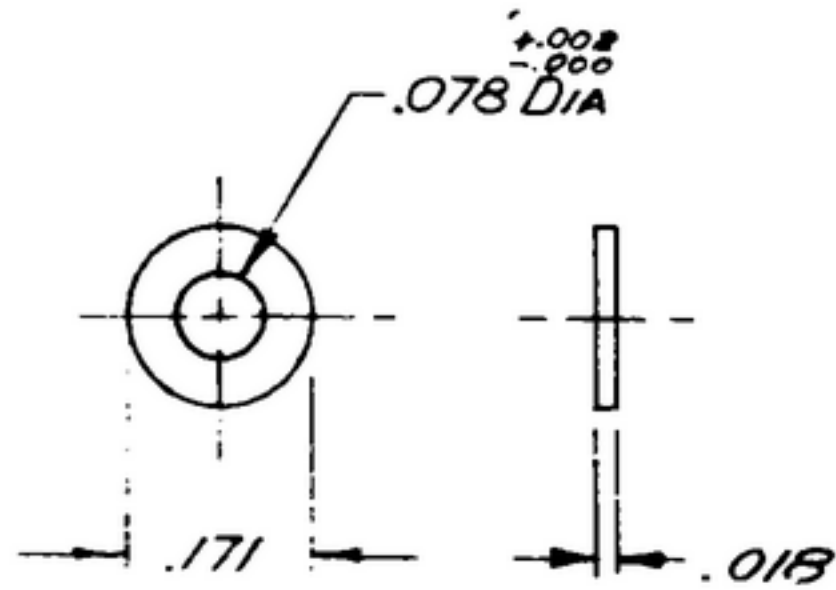


NOTICE: When Government drawings, specifications, or other data are used for any purpose other than in connection with a definitely related Government procurement operation, the United States Government thereby incurs no responsibility or any obligation whatsoever, and the fact that the Government may have formulated, furnished, or in any way supplied the said drawings, specifications, or other data is not to be regarded by implication or otherwise as in any manner licensing the holder or any other person or corporation, or conveying any rights or permission to manufacture, use or sell any patented invention that may in any way be related thereto.

NEXT ASSEMBLY	USED ON	SWE * APPROVAL	REVISIONS			
			SYM	DESCRIPTION	DATE	APPROVAL
SM-B-170820	SC-DL-170759	S P Y 10042-8 M	A <sub>2</sub>	A <sub>1</sub> -ADDED APPL. SM-B-249057, SC-DL-248775. A <sub>2</sub> -NOTE 1 WAS *PER MIL-P-12011.	27 OCT. 59	42428-PC-59-A1-51 REV'D. PME
SM-B-249057	SC-DL-248775					

NOTE:

\*FOR INFORMATION ONLY,  
CONTRACTOR MAY AT HIS  
OPTION DEVIATE FROM  
THESE PROCESS DATA:



STEEL, COMP G, COND 1/2 H, PER SPEC MIL-S-5059.

A<sub>2</sub> 1-PASSIVATE: E 300 PER SPEC. MIL-F-14072.

UNLESS OTHERWISE SPECIFIED	AUTHENTICATION	DESCRIPTION	DATE	SPEC	NOTE
DIMENSIONS ARE IN INCHES	DRAWN 21852-PN-60-93	<b>WASHER</b>			
TOLERANCES ON FRACTIONS ±	TRACED PHOTO				
DECIMALS ±.005	CHECKED <i>PME</i>				
ANGLES ±	VERIFIED <i>P.D. BR</i>				
COMMERCIAL TOLERANCES APPLY TO STOCK SIZES	APPROVED <i>P.D. BR</i>				
ALL SURFACES ✓	REVIEWED <i>PME</i>	SCALE 4/1	DATE 1-MAY-1953	FINISH SEE NOTE 1	DEPARTMENT OF THE ARMY SIGNAL CORPS ENGINEERING LABORATORIES FORT MONMOUTH NEW JERSEY
					<b>SM-B-170822</b>

WHEN REFERRING TO THIS DRAWING STATE DRAWING NO., APPLICABLE ISSUE SYMBOL, AND DATE