
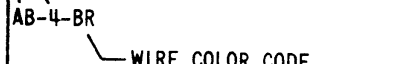
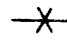
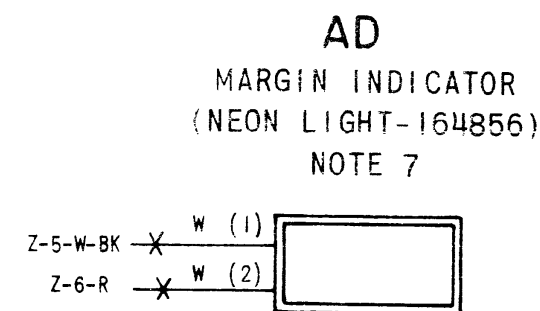
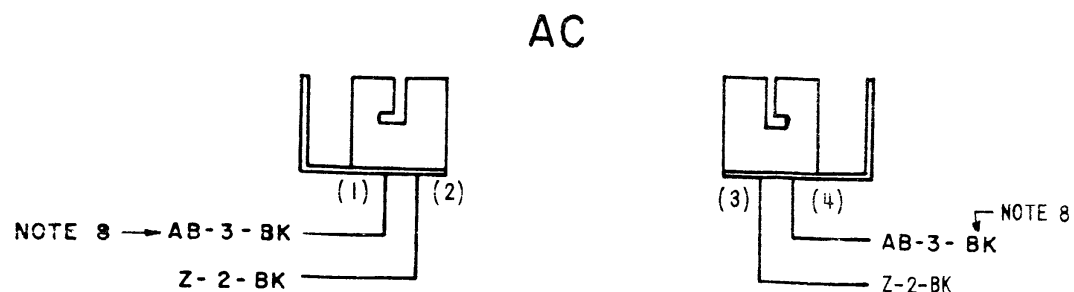
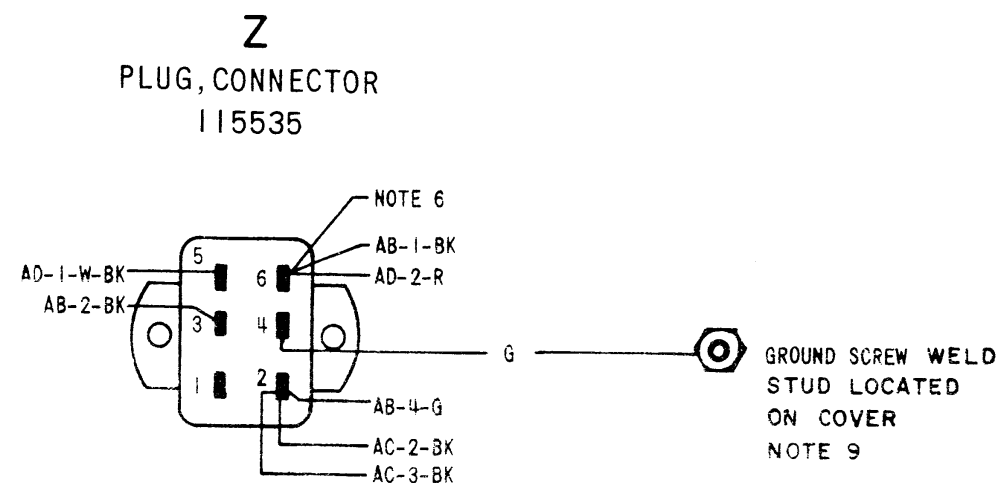
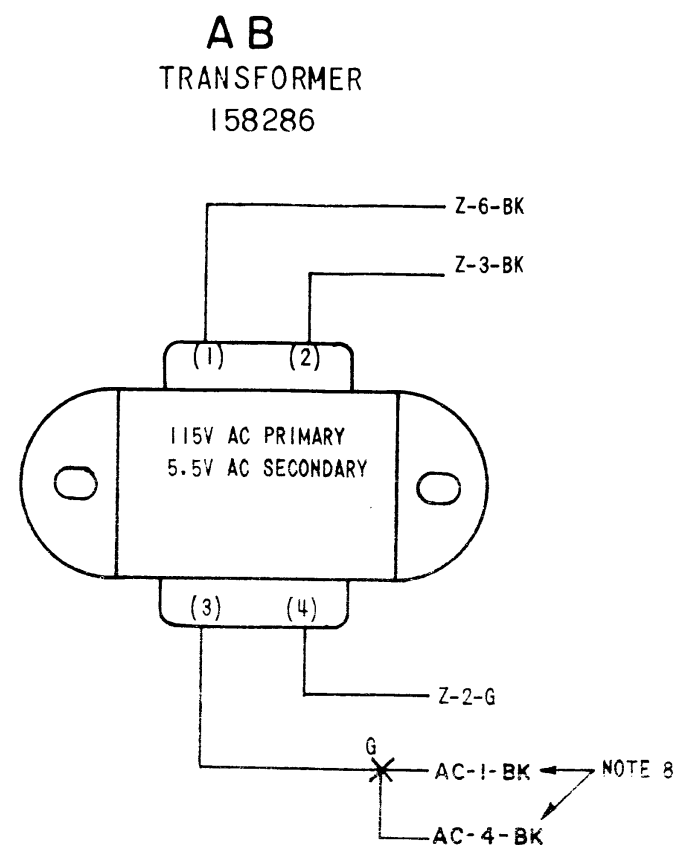


5978WD

ISSUE	DATE	AUTH. NO.
2	7-30-64	83111
3	8-27-64	83633
4	9-28-64	83766
5	1-6-66	89488

- | NO. | NOTES |
|-----|--|
| 1. | WIRING LEGEND:

AB-4-BR
 |
| 2. | COLOR CODE:
BK-BLACK R-RED
BL-BLUE Y-YELLOW
BR-BROWN G-GREEN
O-ORANGE W-WHITE
S-SLATE P-PURPLE |
| 3. | ASSOCIATED WIRING DIAGRAMS:
5976WD ACTUAL WIRING DIAGRAM
LLK1 & LLK2
5977WD SCHEMATIC WIRING DIAGRAM
LLK1, LLK2, LMJ37, LP111, LPC400 |
| 4. |  INDICATES SPLICE SOLDER AND TAPE |
| 5. | CONNECTOR VIEWED FROM SOLDER END. |
| 6. | USE 155755 INSULATING SLEEVE ON THE CONNECTOR TERMINALS AFTER SOLDERING. |
| 7. | THE 164856 NEON INDICATOR IS USED AS A MARGIN INDICATOR ON THE LPC 400 ONLY, ON THE LPC401 THIS LIGHT IS USED AS A POWER "ON" INDICATOR BOTH COVER UNITS USE THE 198562 CABLE ASSEMBLY. |
| 8. | SPLICE LEADS AB-3, AC-1 & AC-4 TAPE & TUCK & TIE AT THE "Z" CONN. |
| 9. | EARLY VERSION COVERS UTILIZE ONE OF THE TRANSFORMER MOUNTING SCREWS FOR TERMINATING THE GROUND STRAP |



COPYRIGHT SOCKETS
PART OF 198562
CABLE ASSEMBLY.

ACTUAL
WIRING DIAGRAM
FOR
LPC400**, LPC401**
(COVER, COMPACT
PAGE PRINTER SET)

APPROVALS

D AND R E OF M

E-NUMBER

PROD. NO. 5978WD

DATE: 3-13-63

P.D. FILE NO. 4-30.65/153.219

DRAWN. TLS

CHKD. JJK

ENGD. TJT

APPD. T.I.P.

TELETYPE CORPORATION

5978WD