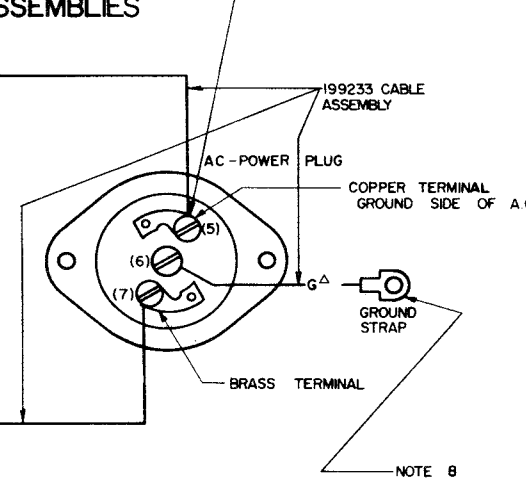
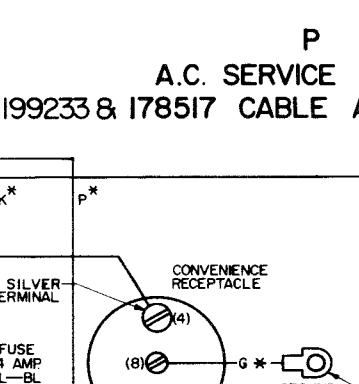
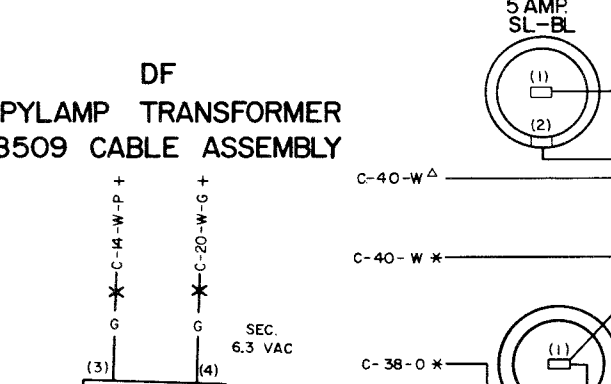
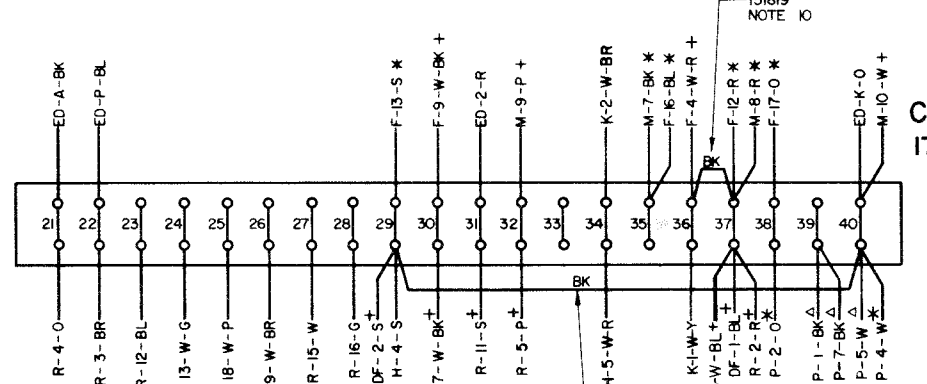
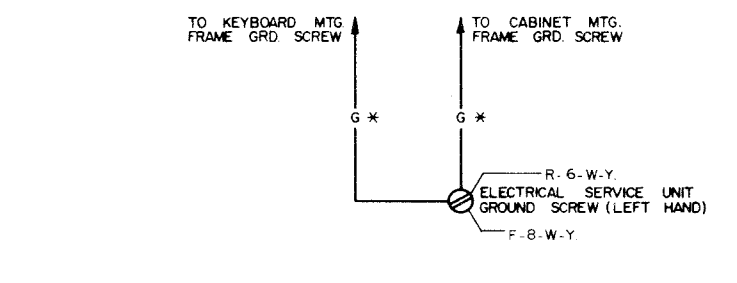
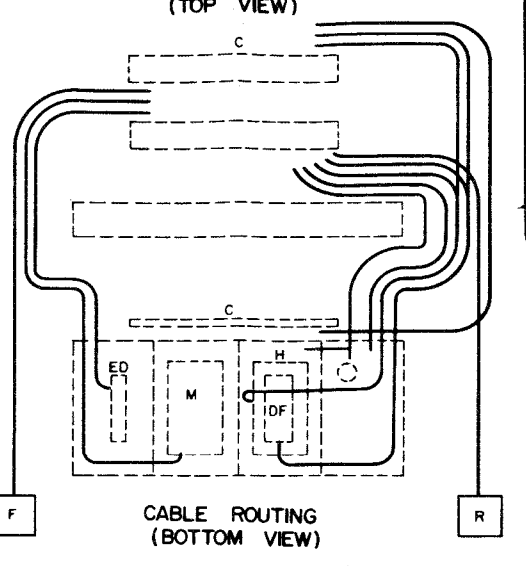
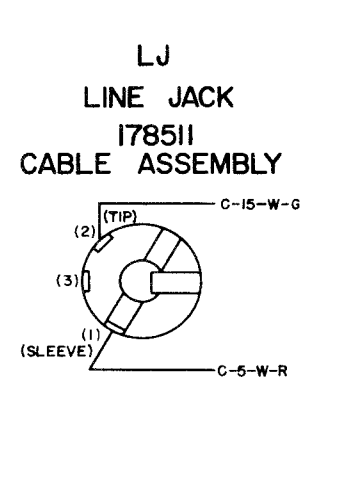
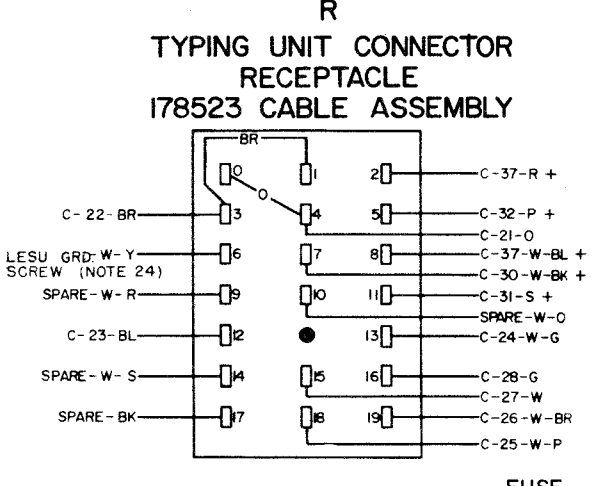
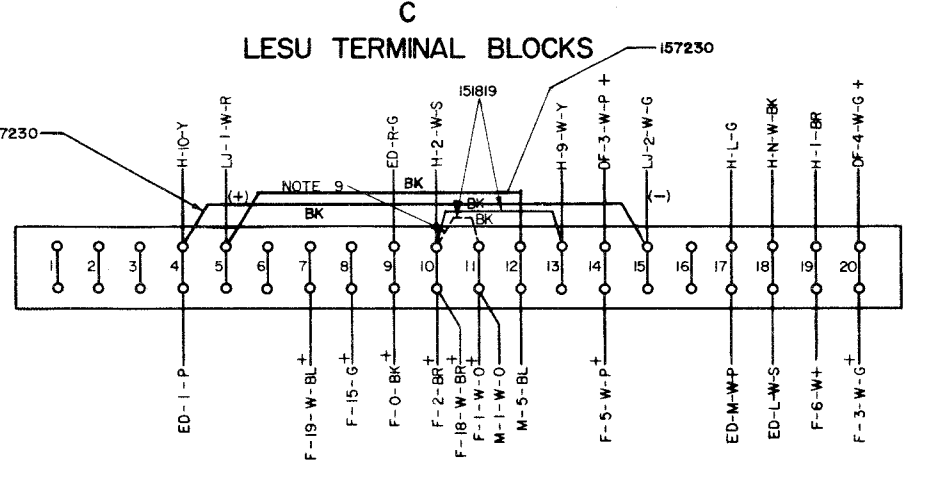
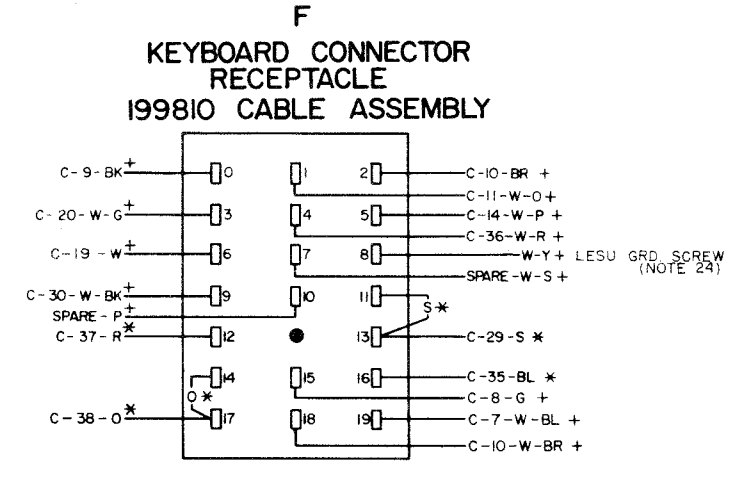


NO	NOTES
1	WIRING LEGEND
2	COLOR CODE BK - BLACK P - PURPLE BR - BROWN S - SLATE BL - BLUE W - WHITE O - ORANGE G - GREEN Y - YELLOW R - RED
3	* DENOTES 18 GA. Δ DENOTES 16 GA. + DENOTES 22 GA. ALL OTHER WIRE 24 GA.
4	UNIT WIRED FOR 115 VOLTS 60 CYCLE A.C. POWER INPUT ONLY.
5	CONNECTORS VIEWED FROM SOLDER TERMINAL END.
6	TERMINALS C1-C3 ARE RESERVED FOR CUSTOMER USE.
7	CONTACTS SHOWN IN UN-OPERATED OR DE-ENERGIZED POSITIONS.
8	SPARE LEADS FROM THE KEYBOARD CONNECTOR ARE TERMINATED AT THE LEFT END OF THE ELECTRICAL SERVICE UNIT. SPARE LEADS FROM THE TYPING UNIT CONNECTOR ARE TERMINATED AT THE RIGHT END OF THE ELECTRICAL SERVICE UNIT.
9	THIS WIRE MUST BE SECURED TO SERVICE UNIT WITH GROUNDING SCREW IN CONVENIENCE RECEPTACLE MOUNTING BOX.
10	WHEN SIGNAL LINE BREAK SWITCH IS NOT USED, ADD STRAP BETWEEN C-10 AND C-11.
11	LINE SHUNT RELAY SHOWN CONTROLLED BY MOTOR CONTROL POWER CONTACTS. FOR DIRECT CONTROL OF LINE SHUNT RELAY FROM POWER SWITCH REMOVE STRAP BETWEEN C-36-C-37 AND ADD STRAP BETWEEN C-35-C-36.
12	TO DISABLE MOTOR CONTROL FEATURE ELECTRICALLY ADD STRAP BETWEEN C-35-C-37.
13	SELECTOR MAGNET DRIVER SHOWN CONTROLLED BY POWER SWITCH. FOR CONTINUOUS OPERATION MOVE ED-2-R WIRE FROM C-31 TO C-38.
14	WIRING SHOWN FOR .020 AMP NEUTRAL SIGNAL LINE OPERATION.
15	FOR SCHEMATIC WIRING DIAGRAM REFER TO 6003WD.
16	TERMINAL DESIGNATIONS ENCLOSED IN PARENTHESES ARE NOT NECESSARILY MARKED ON COMPONENTS.
17	FOR NEUTRAL SIGNAL LINE OPERATION USE CIRCUIT CARD ASSEMBLIES AS FOLLOWS: SIGNAL BRIT ASSEMBLY NO. .020 AMP 182630
18	WHEN PUTTING CIRCUIT CARD IN CONNECTOR MAKE SURE COMPONENT SIDE OF CARD FACES CAPACITOR AND TRANSFORMER ON SELECTOR MAGNET DRIVER ASSEMBLY.
19	THE SLEEVING COVERED TERMINALS ON THE 199233 CABLE MUST BE FASTENED TO TERMINALS 5 AND 7 SO THAT THEY ARE POINTING TO THE REAR OF THE UNIT AS MUCH AS POSSIBLE.
20	THE GROUND STRAP ON THE CONVENIENCE RECEPTACLE MUST BE SECURED TO THE SERVICE UNIT WITH MOUNTING SCREW FROM CONVENIENCE RECEPTACLE FARTHEST FROM THE FUSE HOLDER.
21	THE AND/OR ROUTE CABLES TO AVOID CONTACT WITH THIS RESISTOR.
22	THE FORM 'B' (BREAK) CONTACT SHALL NOT OPEN UNTIL THE TRANSFER OF THE FORM 'C' CONTACTS HAS BEEN COMPLETED.
23	SHOWN WIRED FOR .020 AMPERE NEUTRAL OPERATION.
24	IF THE AC INPUT POWER PLUG IS NOT USED AND THE AC POWER IS WIRED DIRECTLY TO TERMINALS C-39 AND C-40, THEN IT IS NECESSARY THAT THE OFFICE GROUND LEAD BE ATTACHED TO THE TERMINAL BLOCK MOUNTING PLATE. A NO. 6 SCREW, FLAT WASHER, AND STAR WASHER ARE INCLUDED IN A BAG FOR THIS PURPOSE. REMOVE THE WIRES IN THE 199233 CABLE FROM TERMINALS C-39 AND C-40 AND TAPE AND TIE THEM BACK TO THE CABLE.
25	WIRES FROM "F" AND "R" CONNECTORS TO GROUND SCREW NOT CONNECTED ON SOME SETS.



6002WD

REVISIONS		
ISSUE	DATE	AUTH. NO.
1	6-17-64	15369-R
2	10-7-65	88785
3	6-10-66	91185
4	1-25-67	92056

ACTUAL WIRING DIAGRAM FOR MO DEL 35 (WALL MOUNT) ELECTRICAL SERVICE UNIT AND ASSOCIATED UNITS LESU 308

APPROVALS	
D. AND R	E OF M
E-NUMBER	
PROD. NO. 6002WD	
DATE 1-15-63	
P.D. FILE NO. 1-30 151AA	
DRAWN J.J.K.	CHKD. R.H.H.
ENGD. W.T.C.	APPD. J.C.C.
TELETYPE CORPORATION	
6002WD	