

ISSUE CONTROL RECORD

5948 WD

NO.	NOTES	SUPPORTING INFORMATION		CONTENTS	SHEET NO.	ISSUE													
		CATEGORY	NO.			2	3	4	5	6	7	8	9	10	11	12	13	14	15

REVISIONS APPLYING TO THIS CONTROL RECORD

ISSUE	DATE	AUTH. NO.

RTTY ELECTRONICS
 TELETYPE=Sales-Service-Parts
 PO Box 20101 El Sobrante, Ca.
 94820. (510)222-3102
 mr_rtty@pacbell.net

ISSUE CONTROL SHEET 1 OF 1

ACTUAL
 WIRING DIAGRAM
 MULTI - MAGNET
 REPERFORATOR SET
 LARP8
 LARP 804
 LARB200, LMU20

WD NUMBER 5948 WD
 DRAWN RJP CHKD.
 ENGD. PHB APPD.

TELETYPE CORPORATION

5948 WD

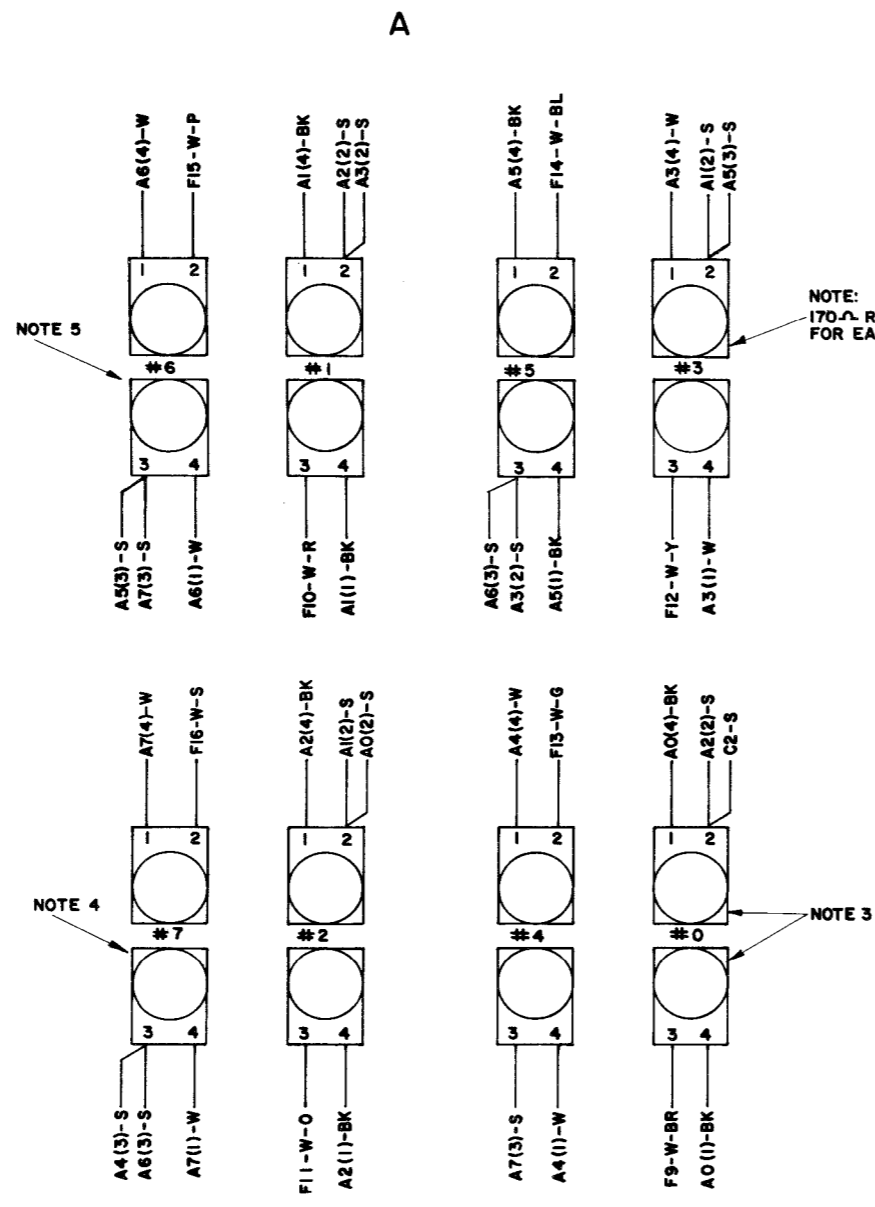
5948 WD

REVISIONS		
ISSUE	DATE	AUTH. NO.
2	4-30-64	79883

NOTE:
REVISION INFORMATION MUST ALSO BE
REFLECTED ON THE ISSUE CONTROL REC-
ORD, WHICH IS A PART OF THIS DRAWING.

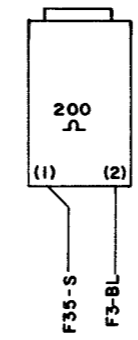
LARP W/TWO COIL PER LEVEL SELECTOR

- NO. NOTES**
- WIRING LEGEND:**
 - COLOR CODE:**
 BK - BLACK S - SLATE
 BR - BROWN P - PURPLE
 R - RED W - WHITE
 O - ORANGE Y - YELLOW
 G - GREEN BL - BLUE
 (W-PREFIX INDICATES WHITE TRACER)
 - FOR LARP 8 ONLY —
TAPE AND TIE BACK (W-BR) WIRE AT A-0-3
TAPE AND TIE BACK (BK) AT A-0-1 & A-0-4
SPLICE, SOLDER, TAPE & TIE BACK(S)
WIRES AT A-0-2 (SEE NOTE 4)
 - FOR LARP 8 ONLY —
TAPE AND TIE BACK (W-S) WIRE AT A-7-2
TAPE AND TIE BACK (W) AT A-7-1 & A-7-4
SPLICE, SOLDER, TAPE & TIE BACK(S)
WIRES AT A-7-3
 - FOR LARP 8 ONLY —
TAPE AND TIE BACK (W-P) WIRE AT A-6-2
TAPE AND TIE BACK (W) AT A-6-1 & A-6-4
SPLICE, SOLDER, TAPE & TIE BACK (S)
WIRES AT A-6-3
 - FOR LARP 804 (NOT REQUIRING 162924 SOP)
TAPE SEPARATELY & TIE BACK THE LEADS.
 - ADD STRAP RM 39522 BETWEEN C1 & C2.
 - FOR LARP 8 ONLY —
TAPE AND TIE BACK (W-BR) AT A-0-1,
SPLICE, SOLDER, TAPE & TIE BACK(S) AND
(BK) WIRES AT A-0-2. SEE NOTE 9 & 10.
 - FOR LARP 8 ONLY —
TAPE AND TIE BACK (W-S) AT A-7-1. SPLICE,
SOLDER, TAPE AND TIE BACK(S) AND (BK)
WIRES AT A-7-2
 - FOR LARP 8 ONLY —
TAPE AND TIE BACK (W-P) AT A-6-1. SPLICE,
SOLDER, TAPE AND TIE BACK(S) AND (BK)
WIRES AT A-6-2.
 - A FRONT CONTACT ASSEMBLY**
B REAR CONTACT ASSEMBLY
 - NETWORK NO. -1 TELETYPE NO. -153631

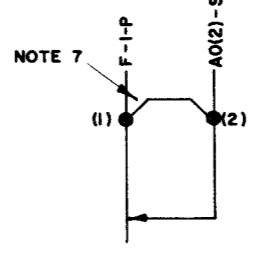


NOTE:
170Ω RESISTANCE
FOR EACH MAGNET

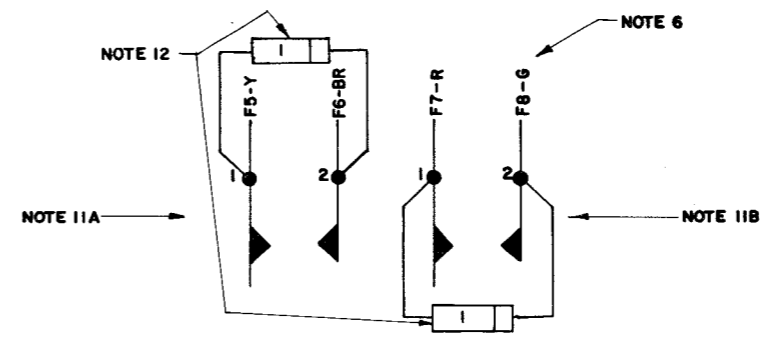
B CLUTCH MAGNET



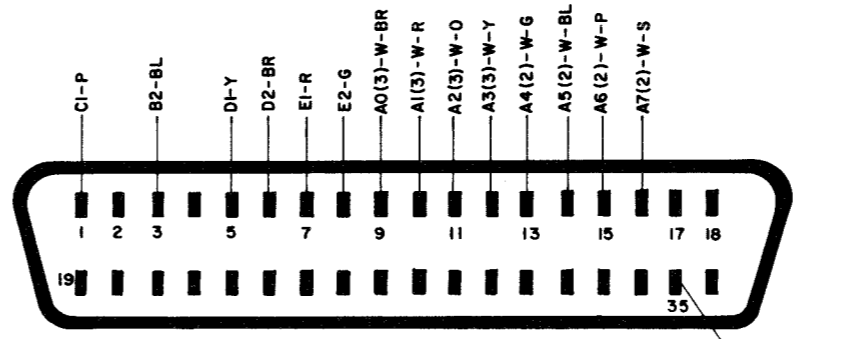
C MAGNET RELEASE CONTACT



D E AUX. CONTACTS (FOR LARP 8) 162924 SET OF PARTS



F 36 PT. CONNECTOR



RTTY ELECTRONICS
 TELETYPE=Sales-Service-Parts
 PO Box 20101 El Sobrante, Ca.
 94820. (510)222-3102
 mr_rtty@pacbell.net

SEE ISSUE CONTROL RECORD FOR COM-
PLETE LIST OF SHEETS COMPRISING THIS
W.D.

SHEET 1

**ACTUAL WIRING DIAGRAM
 MULTI-MAGNET REPERFORATOR
 SET
 LARP 8
 LARP 804
 LAR8200, LMU20**

APPROVALS

D AND R *[Signature]* E OF M *[Signature]*

E-NUMBER
 PROD. NO **5948 WD**
 DATE **8-7-62**
 PD FILE NO. **3-95AAA**
 DRAWN RJP CHKD.
 ENGD. PHB APPD.

TELETYPE CORPORATION

5948 WD

SEE SHEET 1 FOR NOTES

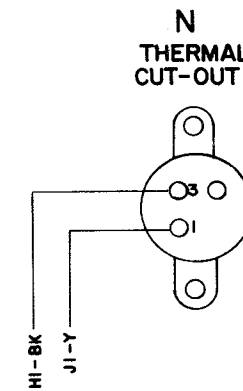
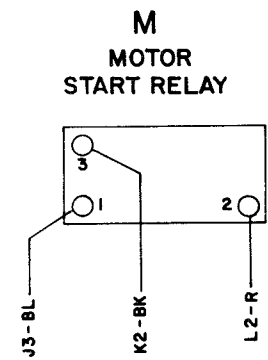
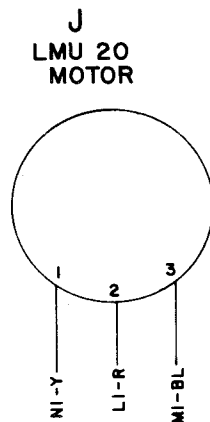
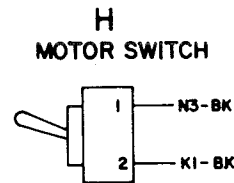
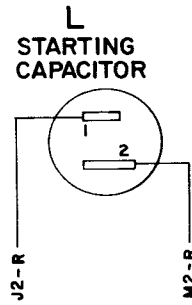
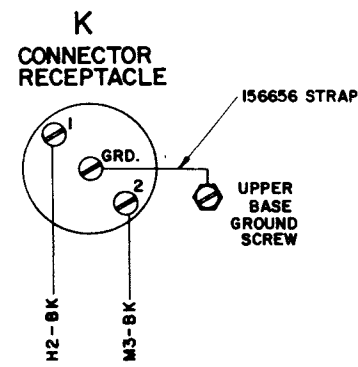
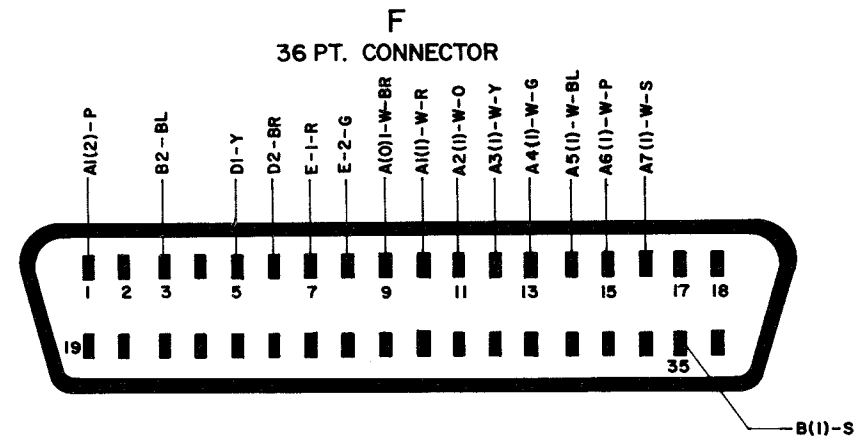
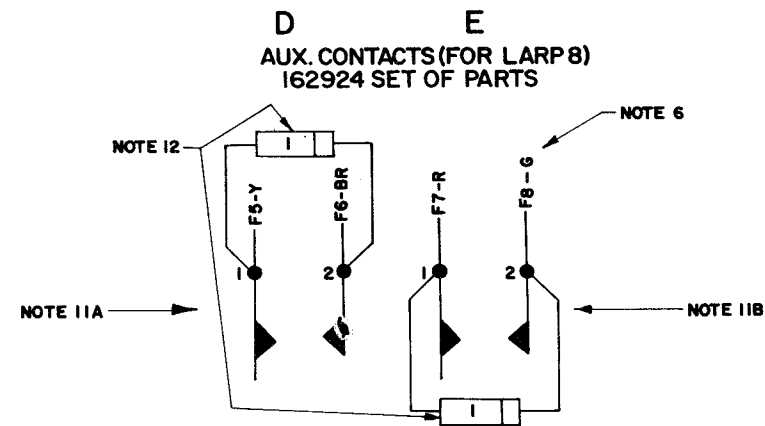
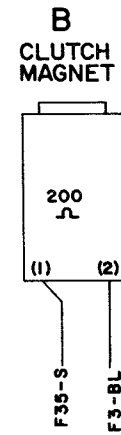
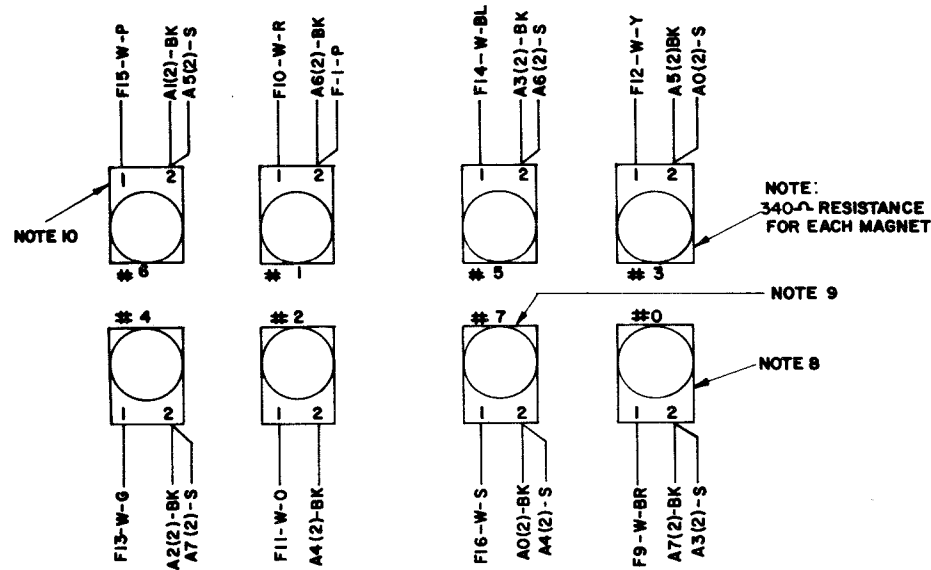
NOTE:
REVISION INFORMATION MUST ALSO BE REFLECTED ON THE ISSUE CONTROL RECORD, WHICH IS A PART OF THIS DRAWING.

5948WD

REVISIONS

ISSUE	DATE	AUTH. NO.
2	4-30-64	79883

LARP W/ONE COIL PER LEVEL SELECTOR



SEE ISSUE CONTROL RECORD FOR COMPLETE LIST OF SHEETS COMPRISING THIS W.D.

SHEET 2

ACTUAL WIRING DIAGRAM
MULTI-MAGNET REPERFORATOR SET
LARP 8
LARP 804
LARB200, LMU20

APPROVALS

D AND R: *[Signature]* E OF M: *[Signature]*

E-NUMBER

PROD. NO. 5948 WD

DATE 8-17-62

P.D. FILE NO. 3-95AAA

DRAWN RJP CHKD.

ENGD. PHB APPD.

TELETYPE CORPORATION

5948WD