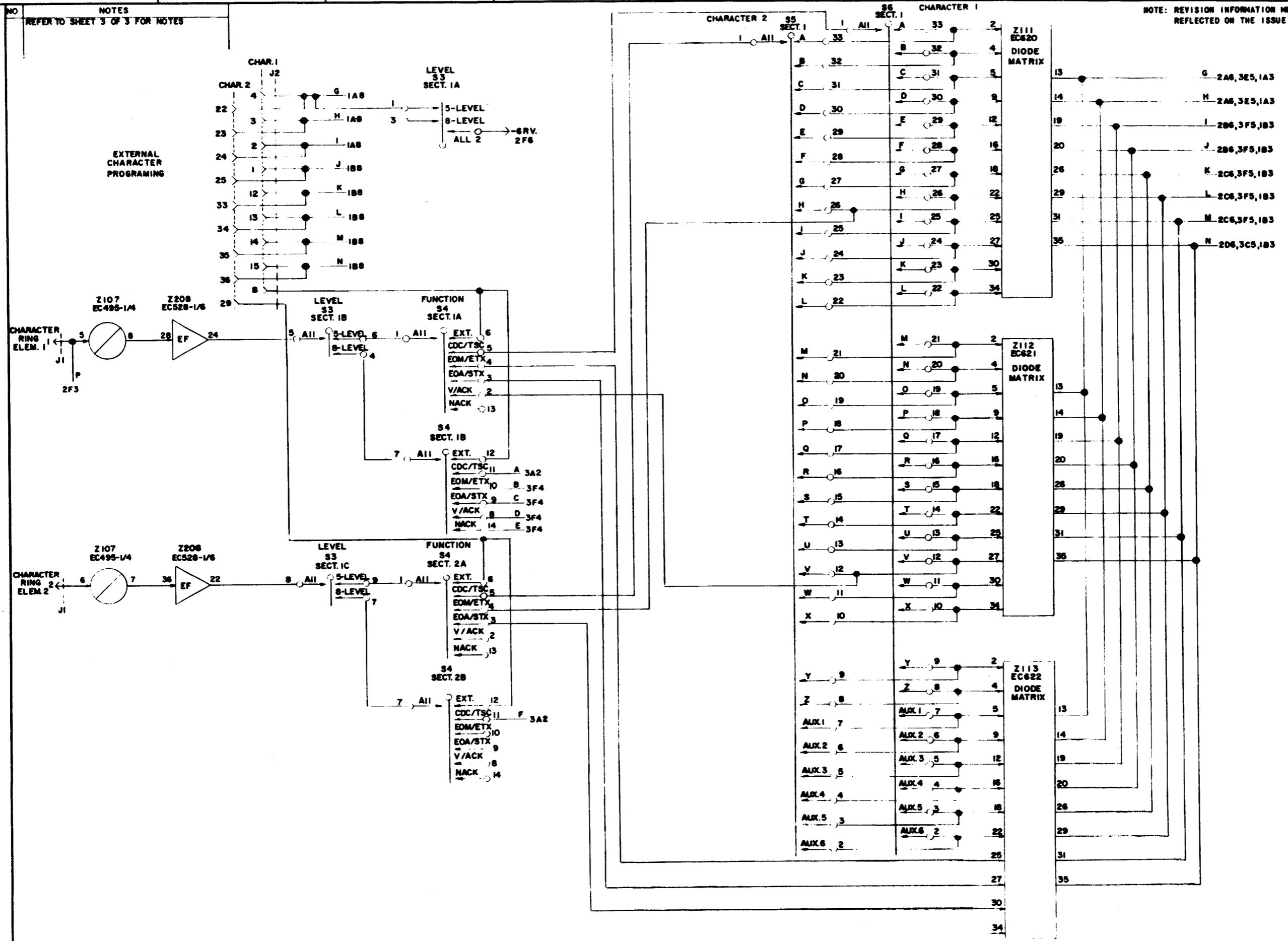


5723WD

REVISIONS		
ISSUE	DATE	AUTH. NO.
1	1-26-68	15831R
2	8-12-65	88223
3	11-11-65	88573

RTTY ELECTRONICS  
 TELETYPE=Sales-Service-Parts  
 PO Box 20101 El Sobrante, Ca.  
 94820. (510)222-3102  
 mr\_rtty@pacbell.net

NOTE: REVISION INFORMATION MUST ALSO BE REFLECTED ON THE ISSUE CONTROL RECORD.



SHEET 1 OF 3

SCHMATIC WIRING DIAGRAM FOR HIGH SPEED SELECTIVE CALLING SYSTEM TEST SET

ASSEMBLY NO. TSG 802

APPROVALS

D AND R	E OF M
---------	--------

E-NUMBER

PROD. NO. 5723WD

DATE 10-5-64

R.D. FILE NO. 33-A25 AA

DRAWN N.A.R. CHKD. *NS*

ENGD. R.E.P. APPD. *NS*

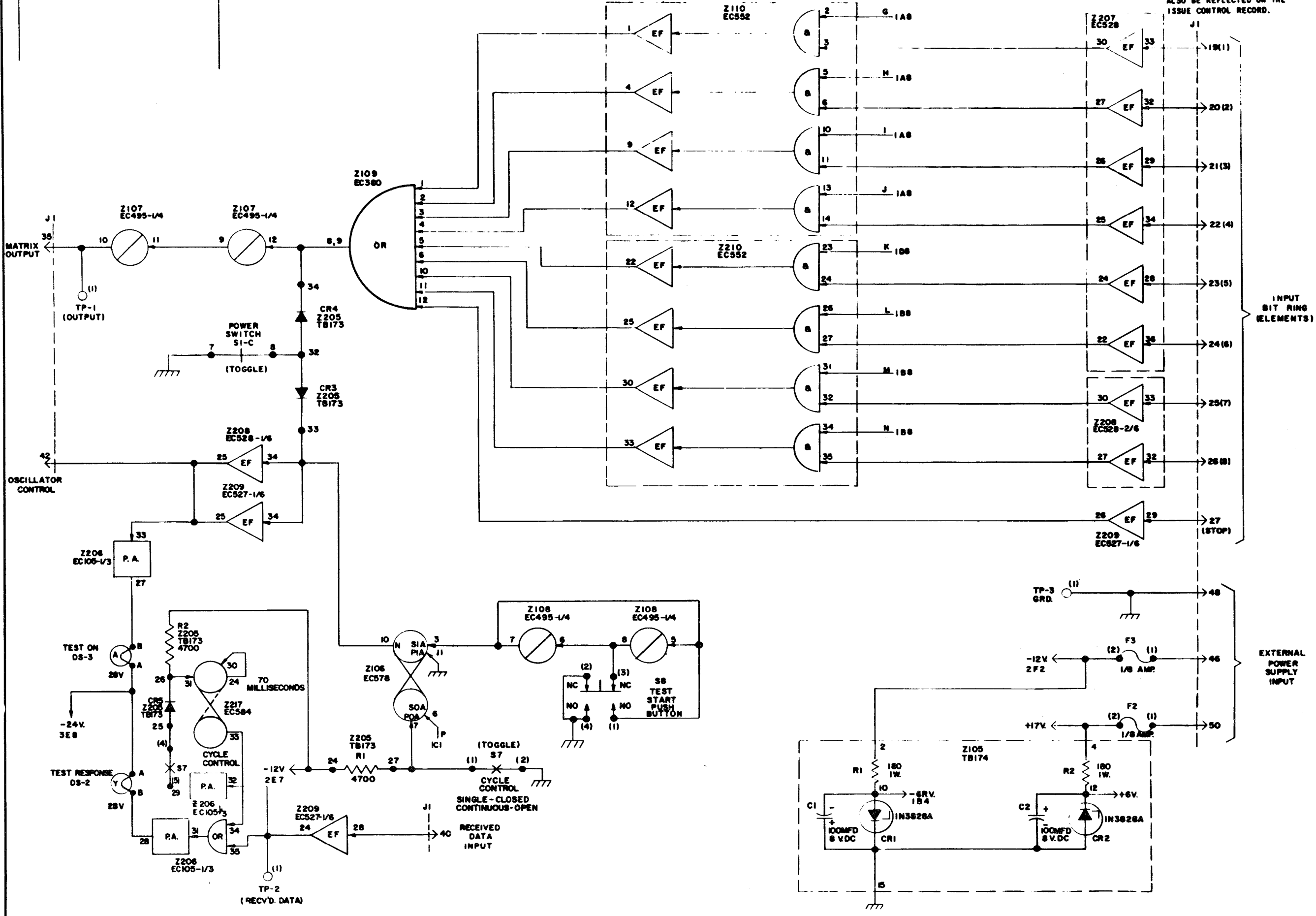
TELETYPE CORPORATION

5723WD

5723WD

REVISIONS		
ISSUE	DATE	AUTH. NO.
1	1-26-65	15831R
2	5-21-65	86960
3	11-12-65	88569

NOTE:  
REVISION INFORMATION MUST  
ALSO BE REFLECTED ON THE  
ISSUE CONTROL RECORD.



INPUT  
BIT RING  
(ELEMENTS)

EXTERNAL  
POWER  
SUPPLY  
INPUT

NOTES  
REFER TO SHEET 3 OF 3 FOR NOTES.

SHEET 2 OF 3

SCHEMATIC  
WIRING DIAGRAM  
FOR  
HIGH SPEED  
SELECTIVE CALLING  
SYSTEM TEST SET

ASSEMBLY NO. TS6 802

APPROVALS

D AND R	E OF M
<i>AK</i>	<i>[Signature]</i>

E-NUMBER

PROD. NO. 5723 WD

DATE 10-5-64

P.D. FILE NO. 33-A25AA

DRAWN N.A.R. CHKD. *[Signature]*

ENGD. R.E.P. APPD. *[Signature]*

TELETYPE  
CORPORATION

5723 WD

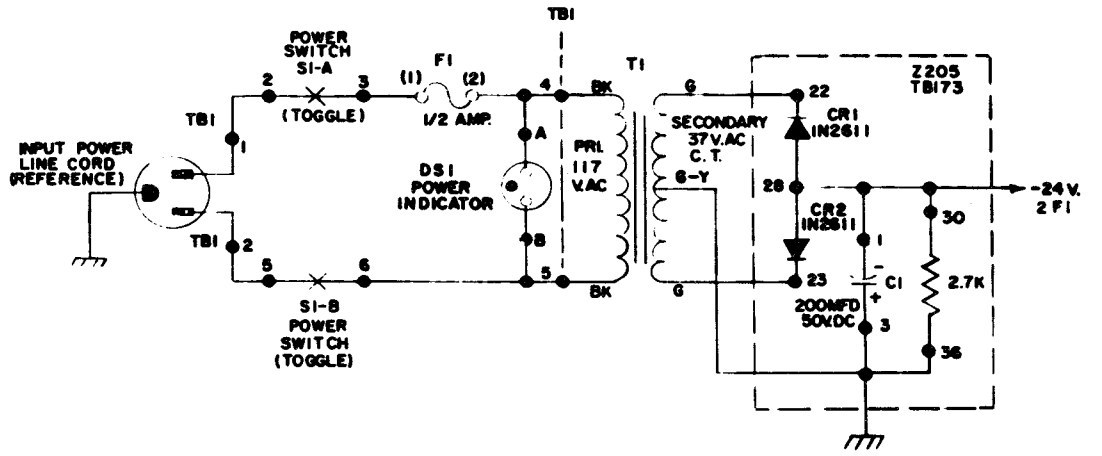
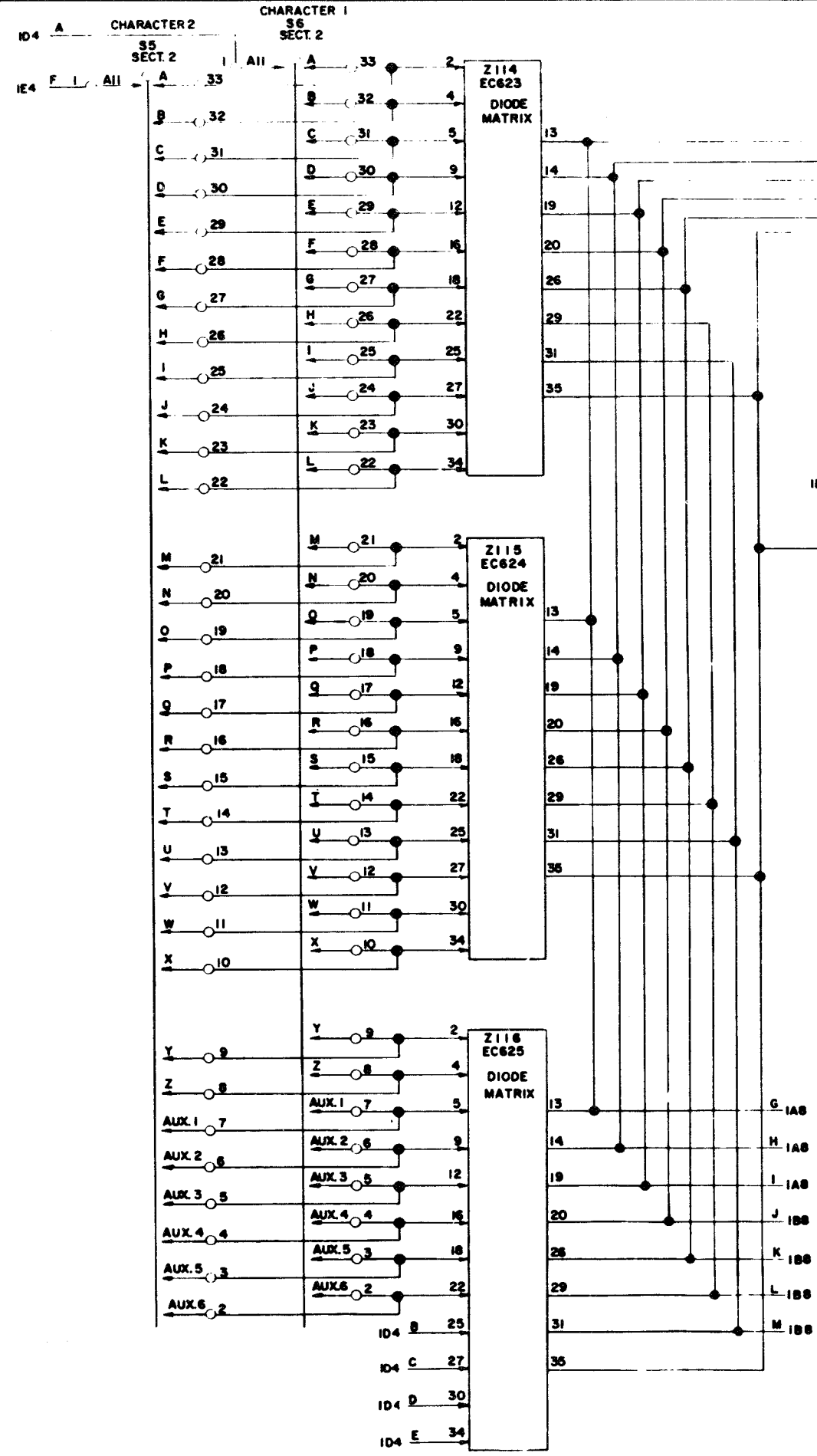
# 5723WD

## REVISIONS

ISSUE	DATE	AUTH. NO.
1	1-26-65	15831 R
2	5-12-65	86223
3	11-11-65	88573

NOTE:  
REVISION INFORMATION MUST  
ALSO BE REFLECTED ON THE  
ISSUE CONTROL RECORD.

1. ALL VOLTAGE DC UNLESS OTHERWISE SPECIFIED.
2. TERMINAL DESIGNATIONS IN PARENTHESIS ( ) ARE FOR REFERENCE AND NOT MARKED ON COMPONENT.
3. ALL RESISTORS 1/2 WATT AND RESISTANCE VALUES IN OHMS, UNLESS OTHERWISE SPECIFIED.
4. WIRING LEGEND:
- REFERENCE POINT  
PAGE NUMBER  
PAGE AREA
- WIRING COLOR CODE:
- |            |            |
|------------|------------|
| BK — BLACK | P — PURPLE |
| BR — BROWN | S — SLATE  |
| R — RED    | W — WHITE  |
| O — ORANGE |            |
| Y — YELLOW |            |
| G — GREEN  |            |
| BL — BLUE  |            |
- SPARE CIRCUITS AVAILABLE:
- 1 — PNP EMITTER FOLLOWER Z208, EC528-1/6
  - 3 — NPN EMITTER FOLLOWERS Z209, EC527-3/6
  - 1 — POWER AMPLIFIER Z206, EC105-1/3
- REFER TO 5724WD FOR ACTUAL WIRING DIAGRAM.
- LAMP COLOR CODE:
- A — AMBER
  - Y — YELLOW
- RESISTANCE OF WINDINGS ON TRANSFORMER T1:
- PRIMARY (BK TO BK) 26 OHMS.
  - SECONDARY (G TO G) 3.25 OHMS.
  - EITHER G LEAD TO G-Y 1.625 OHMS.
- ALPHA-NUMERIC CONVERSION CHART FOR 15 POINT CIRCUIT CARDS (WHEN 15 POINT CKT. CARD IS USED IN THE UPPER HALF OF A 36 PIN CONNECTOR IT EMPLOYS PINS 1-15. WHEN USED IN LOWER HALF OF CONNECTOR IT EMPLOYS PINS 22-36.)
- STAMPING NUMERICAL CONVERSION FOR 15 ON CKT. CARD PT. CARDS WHEN USED WITH 36 PT. CONNECTOR
- |   | WHEN INSERTED IN UPPER HALF OF CONNECTOR | WHEN INSERTED IN LOWER HALF OF CONNECTOR |
|---|--|--|
| A | 1  | 22                                       |
| B | 2  | 23                                       |
| C | 3  | 24                                       |
| D | 4  | 25                                       |
| E | 5  | 26                                       |
| F | 6  | 27                                       |
| H | 7  | 28                                       |
| J | 8  | 29                                       |
| K | 9  | 30                                       |
| L | 10                                       | 31                                       |
| M | 11                                       | 32                                       |
| N | 12                                       | 33                                       |
| P | 13                                       | 34                                       |
| R | 14                                       | 35                                       |
| S | 15                                       | 36                                       |



SHEET 3 OF 3

SCHEMATIC WIRING DIAGRAM FOR HIGH SPEED SELECTIVE CALLING SYSTEM TEST SET

ASSEMBLY NO. T86 802

APPROVALS

D AND R	E OF M
<i>H/K</i>	<i>L</i>

E-NUMBER

PROD. NO. 5723 WD

DATE 10-5-64

R.D. FILE NO. 33-A25 AA

DRAWN N.A.R. CHKD. *[Signature]*

ENGD. R.E.P. APPD. *[Signature]*

TELETYPE CORPORATION

# 5723WD