

5712 WD		
ISSUE	DATE	AUTH NO.
1	7 9 64	82104
4	6 31 64	82430
5	4 18 66	89307

NOTE: REVISION INFORMATION MUST ALSO BE REFLECTED ON THE ISSUE CONTROL RECORD, WHICH IS A PART OF THIS DRAWING.

TO SHEET 2 OF 5

NOTES
 REFER TO SHEET 5 OF 5 FOR NOTES.

SEE SHEET CONTROL
 APPROVALS COMPLETE
 LIST OF SHEETS
 COMPLETING THIS SET

SHEET

SCHEMATIC
 WIRING DIAGRAM
 FOR
 SEQUENCE
 DETECTOR
 1 TO 60 CALLS

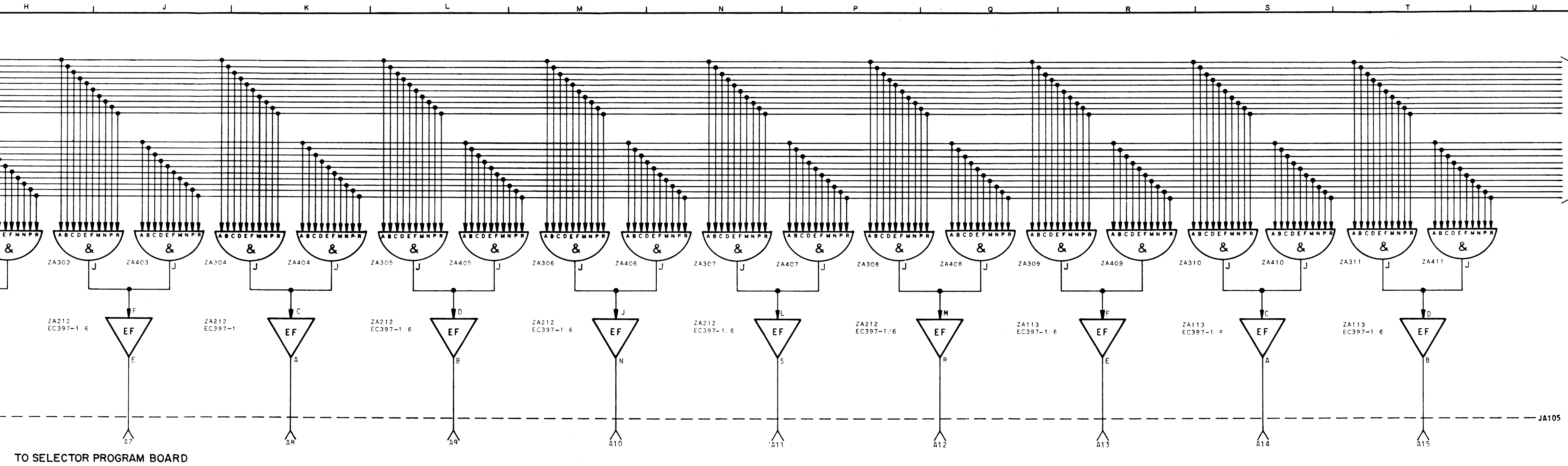
ASSEM NO. 133C08
 APPROVALS
 D AND R F OF M

NUMBER
 DRAWING NO. 5712 WD

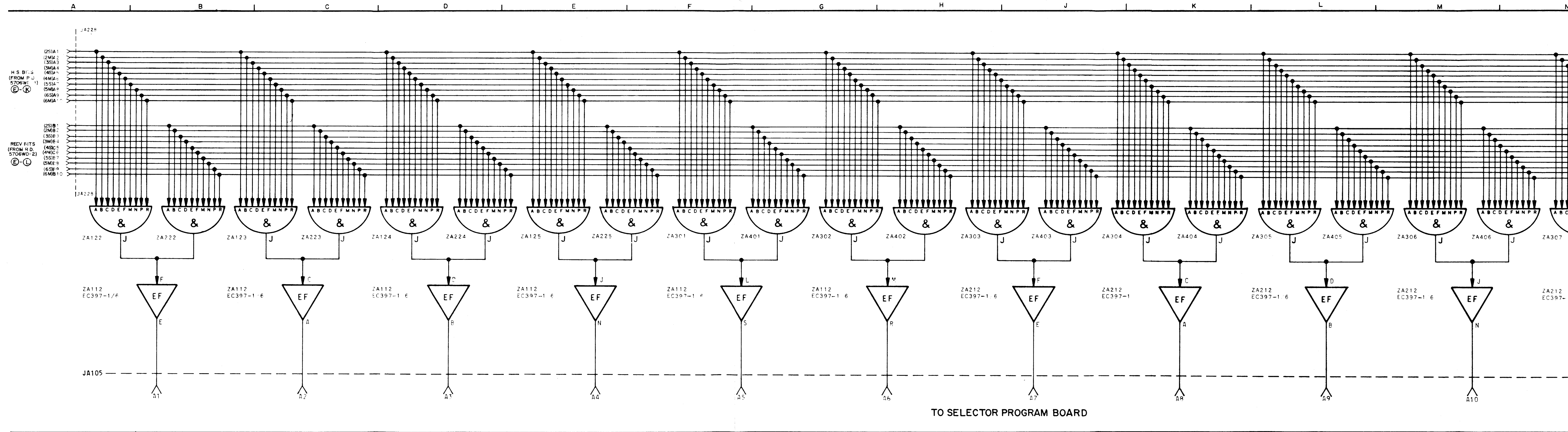
DATE 6-13-63
 PO FILE NO.
 DRAWN [CHKD WCL]
 ENGR [APPR RJR]

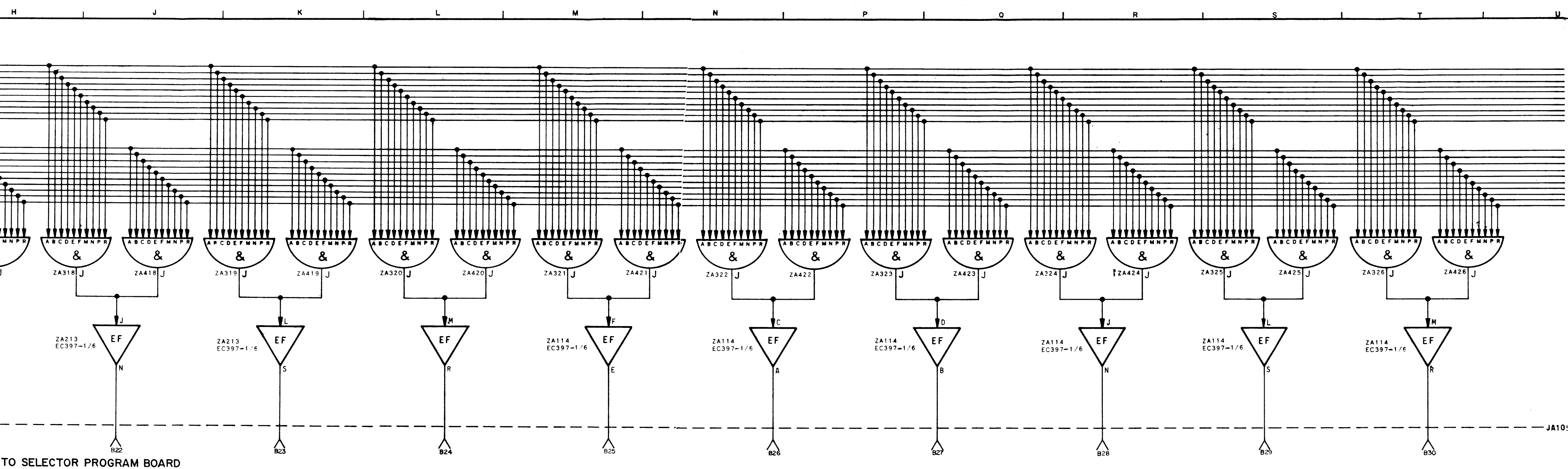
TELETYPE
 CORPORATION

5712 WD



TO SELECTOR PROGRAM BOARD





NOTE: REVISION INFORMATION MUST ALSO BE REFLECTED ON THE ISSUE CONTROL RECORD WHICH IS A PART OF THIS DRAWING.

5712 WD		
REVISIONS		
ISSUE	DATE	AUTH NO
2	RECORD ONLY	
3	7-9-64	82104
4	8-31-64	82492
5	4-18-66	90307

TO SHEET 3

NOTES
REFER TO SHEET 5 OF 5 FOR NOTES.

SEE ISSUE CONTROL RECORD FOR COMPLETE LIST OF SHEETS COMPRISING THIS WORK.
SHEET 2

SCHEMATIC WIRING DIAGRAM FOR SEQUENCE DETECTOR TO EC CALLS

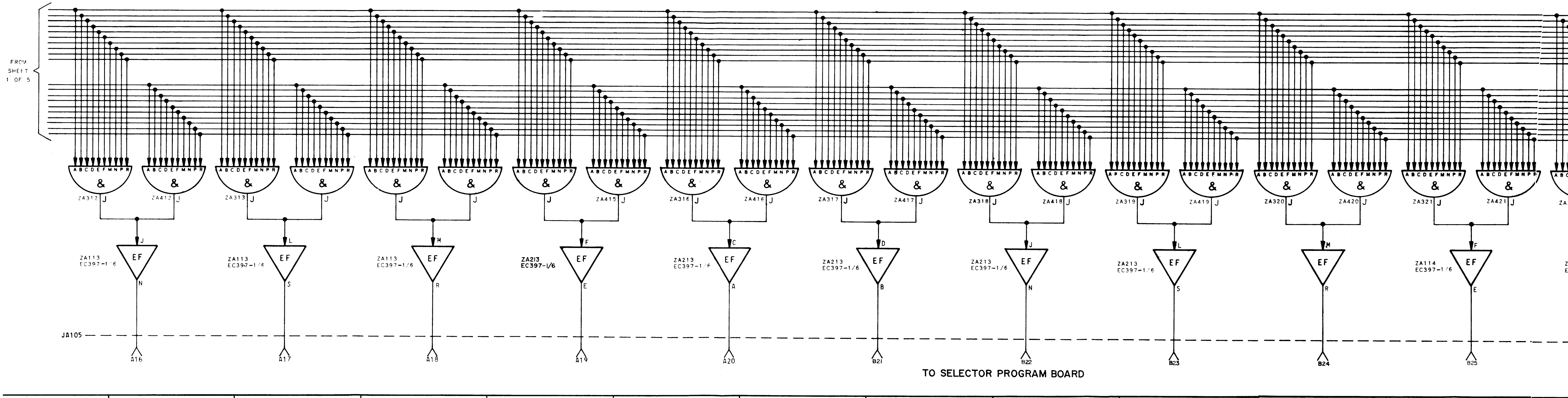
ASSEM NO 193008
APPROVALS

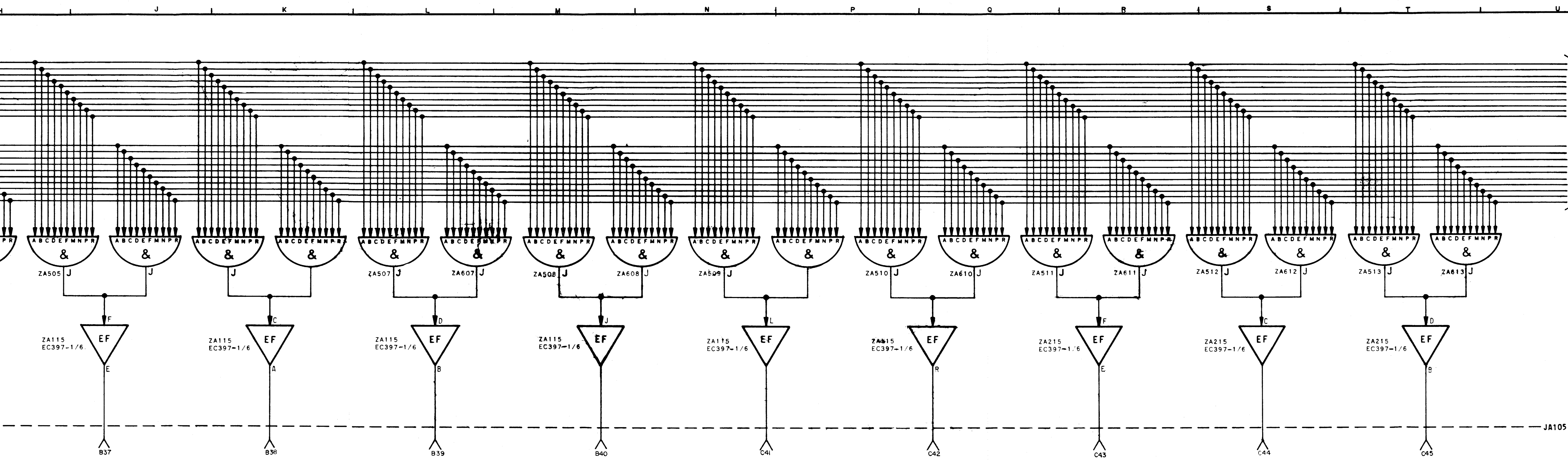
NUMBER
PROD NO 5712 WD

DATE 6-13-63
PD FILE NO 53-A2FAA
DRAWN HS CHKD
ENGR J R APPD

TELETYPE CORPORATION
5712 WD

A B C D E F G H J K L M N





SEQUENCE DETECTOR PROGRAM BOARD

NOTE: REVISION INFORMATION MUST ALSO BE REFLECTED ON THE ISSUE CONTROL RECORD, WHICH IS A PART OF THIS DRAWING.

5712 WD		
REVISIONS		
ISSUE	DATE	AUTH NO
2	RECORD	ONLY
3	7-9-64	B2104
4	4-18-66	90307

TO SHEET 4 OF 5

NOTES
REFER TO SHEET 5 OF 5 FOR NOTES

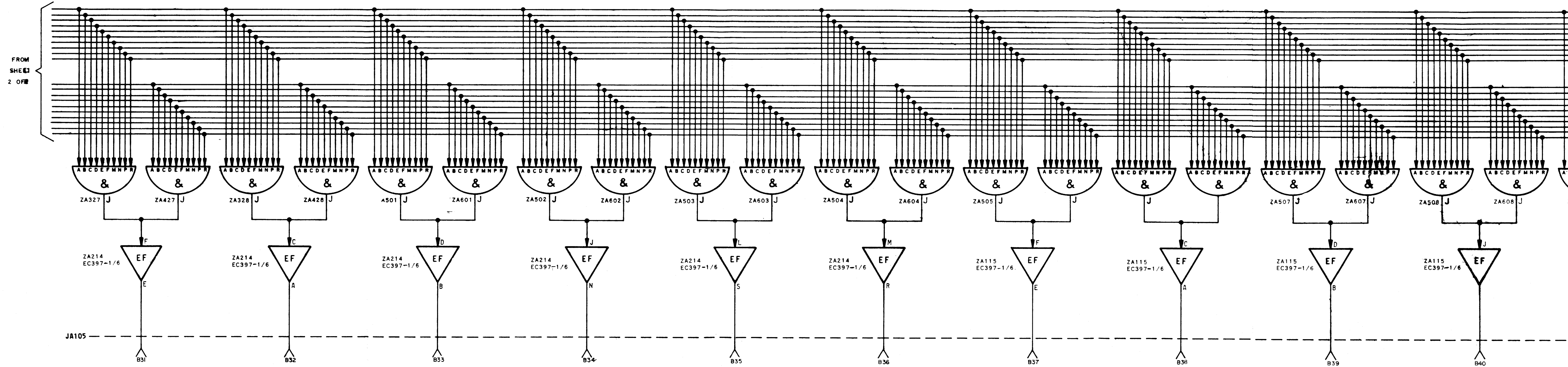
SEE ISSUE CONTROL RECORD FOR COMPLETE LIST OF SHEETS COMPRISING THIS W.D.
SHEET 3

SCHEMATIC WIRING DIAGRAM FOR SEQUENCE DETECTOR 1 TO 60 CALLS

ASSEM NO	193008
APPROVALS	
DESIGNED BY	F. J. M.
DATE	3-63
PROJ NO	5712 WD
DATE	3-63
PO FILE NO	33-A25AA
DRAWN BY	CHKD
ENGR	APPD

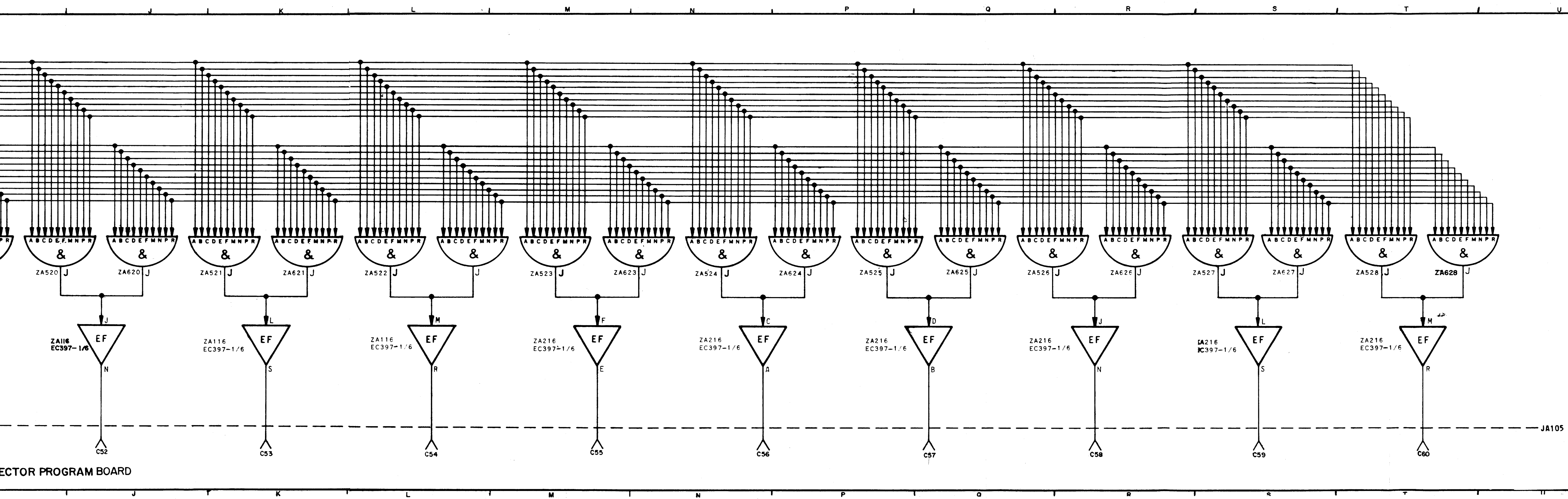
TELETYPE CORPORATION
5712 WD

A B C D E F G H J K L M



TO SELECTOR PROGRAM BOARD

A B C D E F G H J K L M



SEQUENCE DETECTOR PROGRAM BOARD

NOTE: REVISION INFORMATION MUST ALSO BE REFLECTED ON THE ISSUE CONTROL RECORD WHICH IS A PART OF THIS DRAWING.

5712 WD		
REVISIONS		
ISSUE	DATE	AUTH. NO.
1	RECORD ONLY	
2	3-7-64	82104
3	4-3-64	82490
4	4-18-66	90307

NOTES
REFER TO SHEET 5 OF 5 FOR NOTES.

SEE ISSUE CONTROL RECORD FOR COMPLETE LIST OF SHEETS COMPRISING THIS W.D.
SHEET 4

SCHEMATIC WIRING DIAGRAM FOR SEQUENCE DETECTOR ITO 60 CALLS

ASSEM NO 193008

APPROVALS
D AND R E OF M

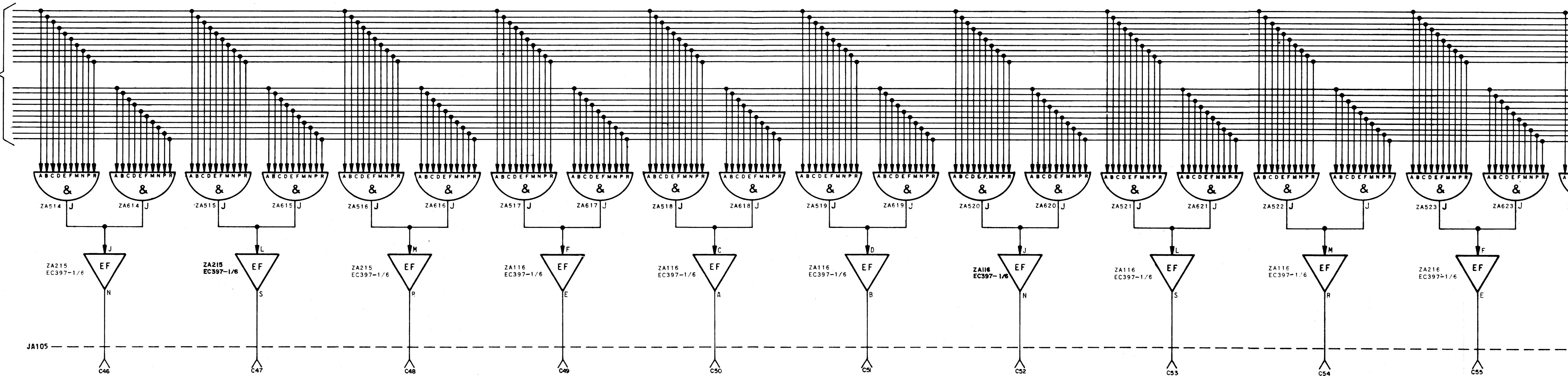
E-NUMBER
PROD. NO. 5712 WD

DATE: 3-
P.D. FILE NO. 33-A25AA
DRAWN H.S. CHKD. *[Signature]*
ENGD. M.J.R. APPD. *[Signature]*

TELETYPE CORPORATION
5712 WD

A B C D E F G H I J K L M N

FRG
SHEET
3 OF 5

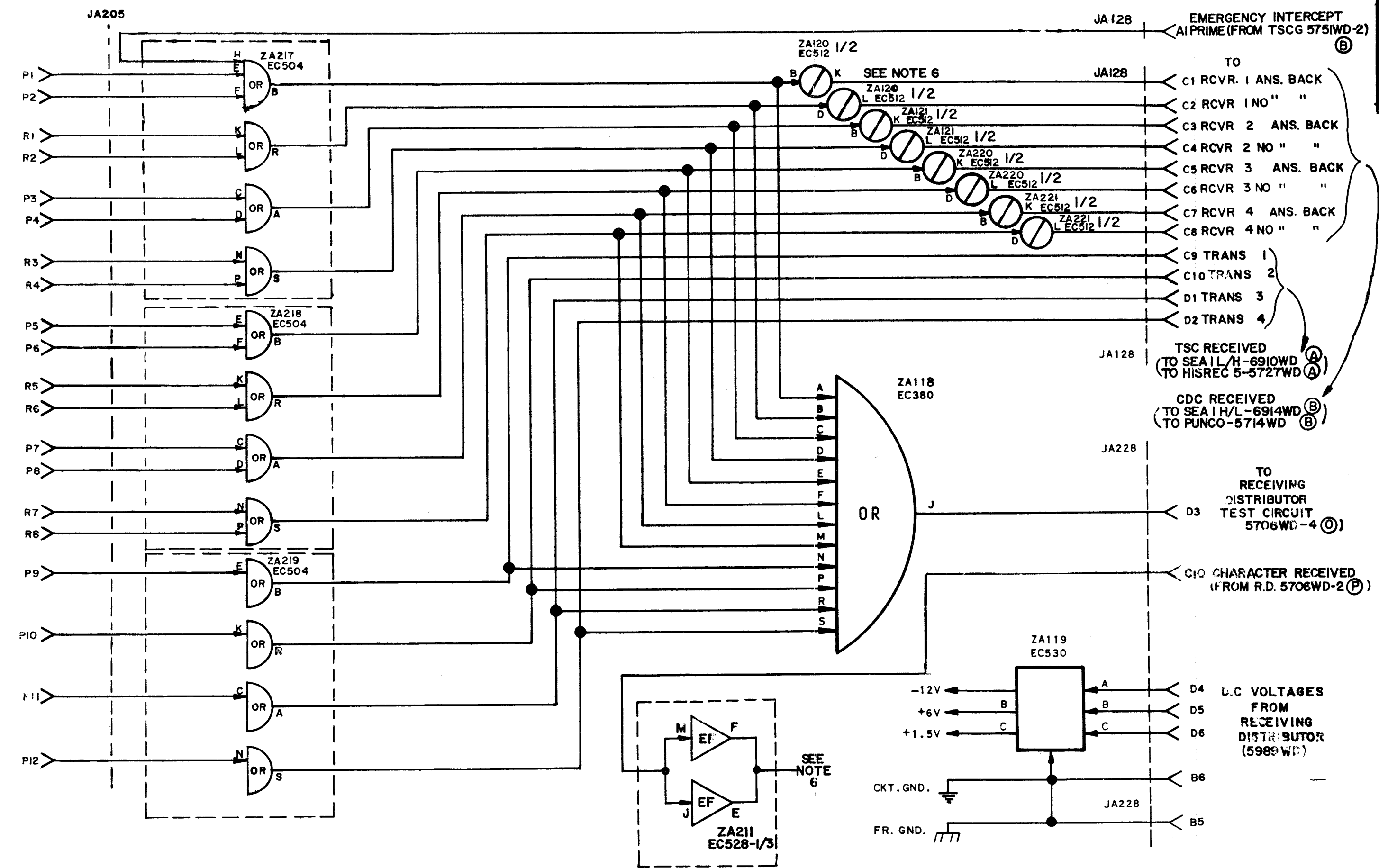


TO SELECTOR PROGRAM BOARD

A B C D E F G H I J K L M N

- NOTES**
- REFER TO 5711WD FOR ACTUAL WIRING DIAGRAM.
 - ALL VOLTAGES DC UNLESS OTHERWISE SPECIFIED.
 - SPARE CIRCUITS AVAILABLE: NONE
 - "AND" GATE CARDS ARE NOT SUPPLIED WITH MODULE.
 - ALL RESISTORS 1/2 WATT AND RESISTANCE VALUES IN OHMS, UNLESS OTHERWISE SPECIFIED.
 - EMITTER FOLLOWERS ZA211 SUPPLY THE VOLTAGE TO THE EMITTERS OF THE INVERTERS IN POSITIONS ZA120, 121, 220, AND 221.
 - SIGNALS GOING FROM ONE WD TO ANOTHER WHICH ARE CONNECTED TOGETHER HAVE THE SAME TITLE ON EACH WD.

FROM THE SELECTOR DETECTION GATES PROGRAMED AS REQUIRED



5712 WD

REVISIONS		
ISSUE	DATE	AUTH. NO.
1	1-6-64	79929
2	3-4-7-64	8249
3	7-9-64	82104
4	8-31-64	82490
5	1-11-65	84872
6	4-18-66	90307

NOTE: REVISION INFORMATION MUST ALSO BE REFLECTED ON THE ISSUE CONTROL RECORD, WHICH IS A PART OF THIS DRAWING.

SEE ISSUE CONTROL RECORD FOR COMPLETE LIST OF SHEETS COMPRISING THIS W.D. SHEET 5 OF 5

SCHEMATIC WIRING DIAGRAM FOR SEQUENCE DETECTOR 1 TO 60 CALLS

ASSEM. NO. 193008

APPROVALS

D AND R E OF M

E-NUMBER

PROD. NO. 5712 WD

DATE: 6-13-63

P.D. FILE NO. 33-A25AA

DRAWN. H.S. CHKD.

ENGDM. J.R. APPD. RYR

TELETYPE CORPORATION

5712 WD