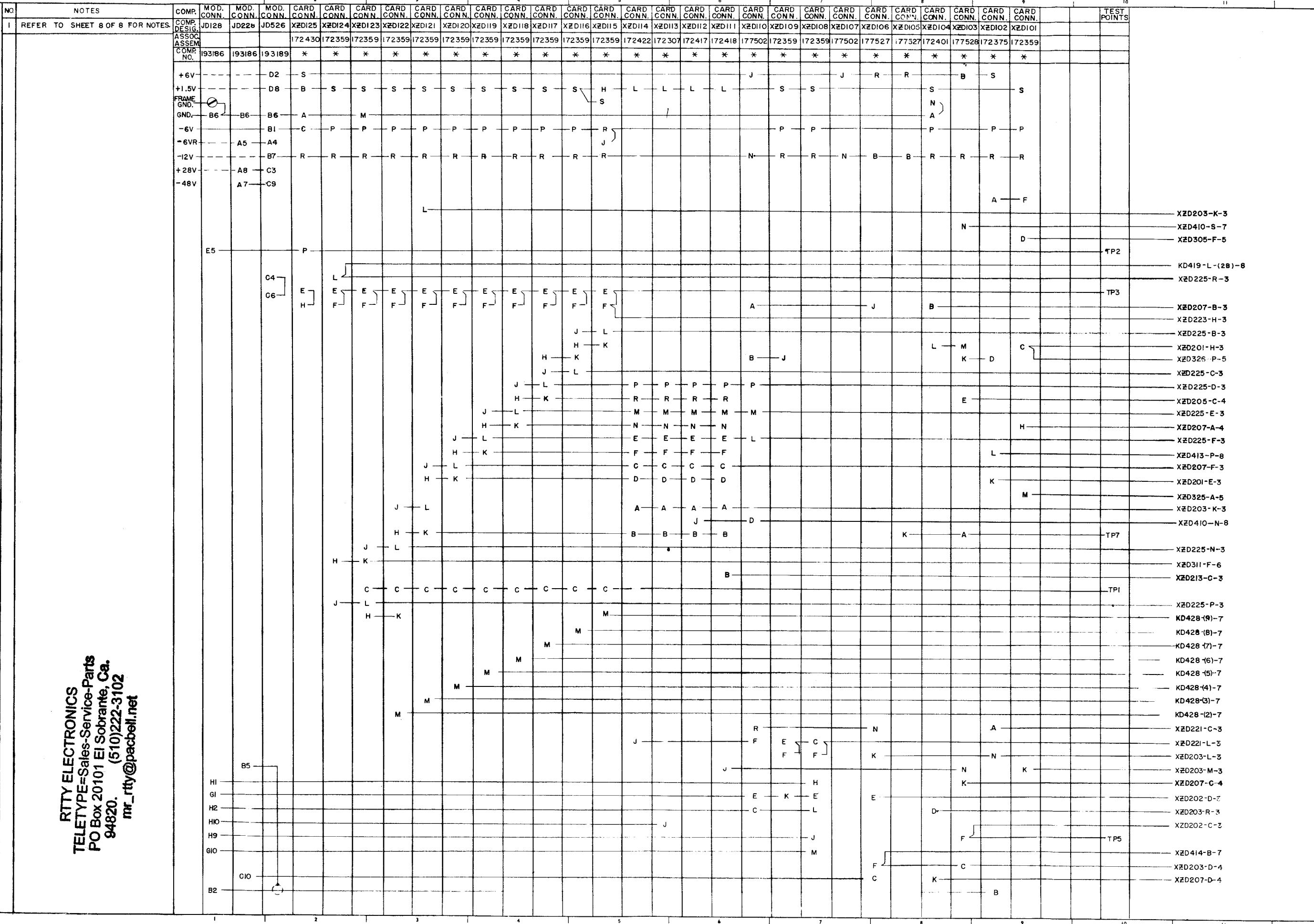


5707WD		
REVISIONS		
ISSUE	DATE	AUTH NO
2	11-29-63	79452
3	4-7-64	79349
4	7-10-64	82107
5	8-31-64	82490
6	10-29-64	83661
7	1-11-65	84872
8	2-12-65	83668
9	6-28-65	87305
10	8-19-65	88162



RITTY ELECTRONICS
 TELETYPE=Sales-Service-Parts
 PO Box 20101 El Sobrante, Ca.
 94820. (510)222-3102
 mr_rtty@pacbell.net

SHEET 1 OF 8

ACTUAL WIRING
 DIAGRAM FOR
 TRANSMITTING
 DISTRIBUTOR
 AND CONTROLS
 ROW 1
 ASSEM. NO. 193005

APPROVALS
 D AND R E OF M

E-NUMBER
 PROD. NO. 5707WD

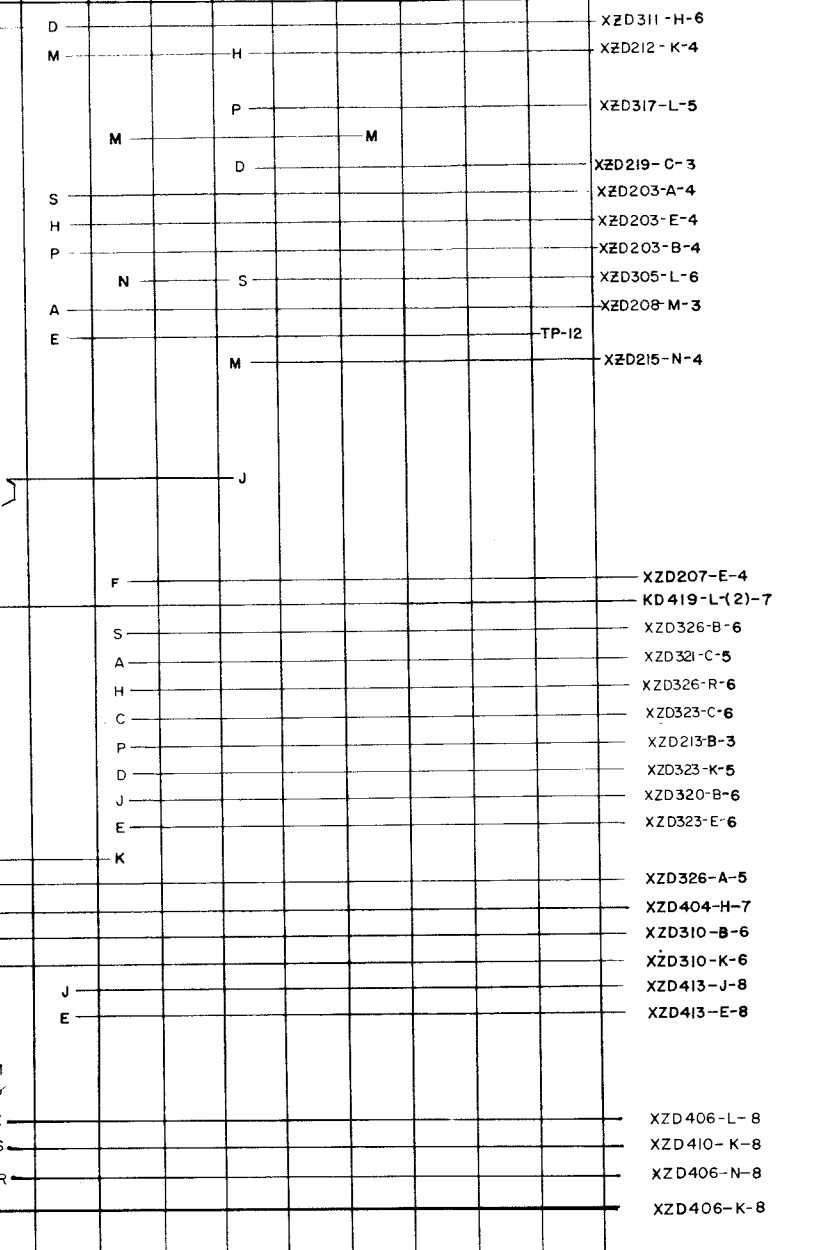
DATE 7-10-63
 P.D. FILE NO. 33-A25AA
 DRAWN L. J. F. CHKD. [Signature]
 ENGD. R. C. H. APPD. [Signature]

TELETYPE CORPORATION

5707 WD

REVISIONS		
ISSUE	DATE	AUTH. NO.
2	11-29-63	79452
3	1-30-64	79834
4	4-7-64	79849
5	7-10-64	82107
6	8-3-64	82490
7	10-29-64	83661
8	1-11-65	84872

NO.	NOTES	COMP. DESIG. ASSOC. ASSEM. COMP. NO.	MOD. CONN. JD128	MOD. CONN. JD228	MOD. CONN. JD526	CARD CONN. XZD125	CARD CONN. XZD124	CARD CONN. XZD123	CARD CONN. XZD122	CARD CONN. XZD121	CARD CONN. XZD120	CARD CONN. XZD119	CARD CONN. XZD118	CARD CONN. XZD117	CARD CONN. XZD116	CARD CONN. XZD115	CARD CONN. XZD114	CARD CONN. XZD113	CARD CONN. XZD112	CARD CONN. XZD111	CARD CONN. XZD110	CARD CONN. XZD109	CARD CONN. XZD108	CARD CONN. XZD107	CARD CONN. XZD106	CARD CONN. XZD105	CARD CONN. XZD104	CARD CONN. XZD103	CARD CONN. XZD102	CARD CONN. XZD101	TEST POINTS			
1.	REFER TO SHEET 8 OF 8 FOR NOTES					172430	172359	172359	172359	172359	172359	172359	172359	172359	172359	172359	172422	172307	172417	172418	177502	172359	172359	177502	177527	177527	172401	177528	172375	172359				
		B3				*	*	*	*	*	*	*	*	*	*	*	*	*	*	*	*	*	*	*	*	*	*	*	*	*				
		A1																																
		A9																																
		A10																																
		B1																																
		B2																																
		E6																																



ACTUAL WIRING DIAGRAM FOR TRANSMITTING DISTRIBUTOR AND CONTROLS ROW I ASSEM. NO. 193005

APPROVALS

D AND R E OF M

E-NUMBER

PROD. NO. 5707 WD

DATE 7-11-63

P.D. FILE NO. 33-A25AA

DRAWN L. J. F. CHKD.

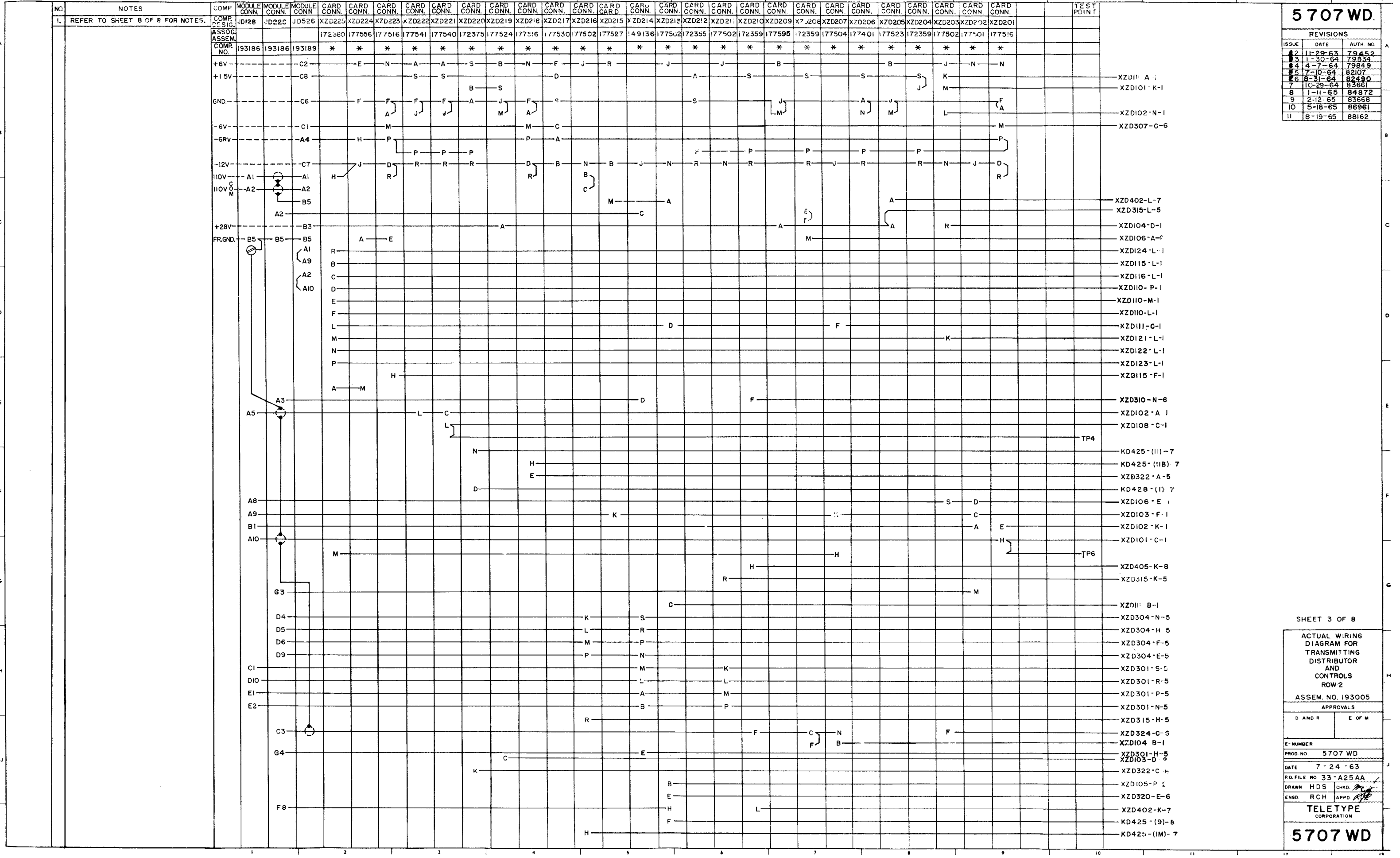
ENGD. R. C. H. APPD. *RCH*

TELETYPE CORPORATION

5707 WD

5707 WD.

REVISIONS		
ISSUE	DATE	AUTH. NO.
2	11-29-63	79452
3	1-30-64	79834
4	4-7-64	79849
5	7-10-64	82107
6	8-31-64	82490
7	10-29-64	83661
8	1-11-65	84872
9	2-12-65	83668
10	5-18-65	86961
11	8-19-65	88162



SHEET 3 OF 8

ACTUAL WIRING
DIAGRAM FOR
TRANSMITTING
DISTRIBUTOR
AND
CONTROLS
ROW 2

ASSEM. NO. 193005

APPROVALS

D AND R E OF M

E-NUMBER

PROD. NO. 5707 WD

DATE 7-24-63

P.D. FILE NO. 33-A25AA

DRAWN HDS CHKD [Signature]

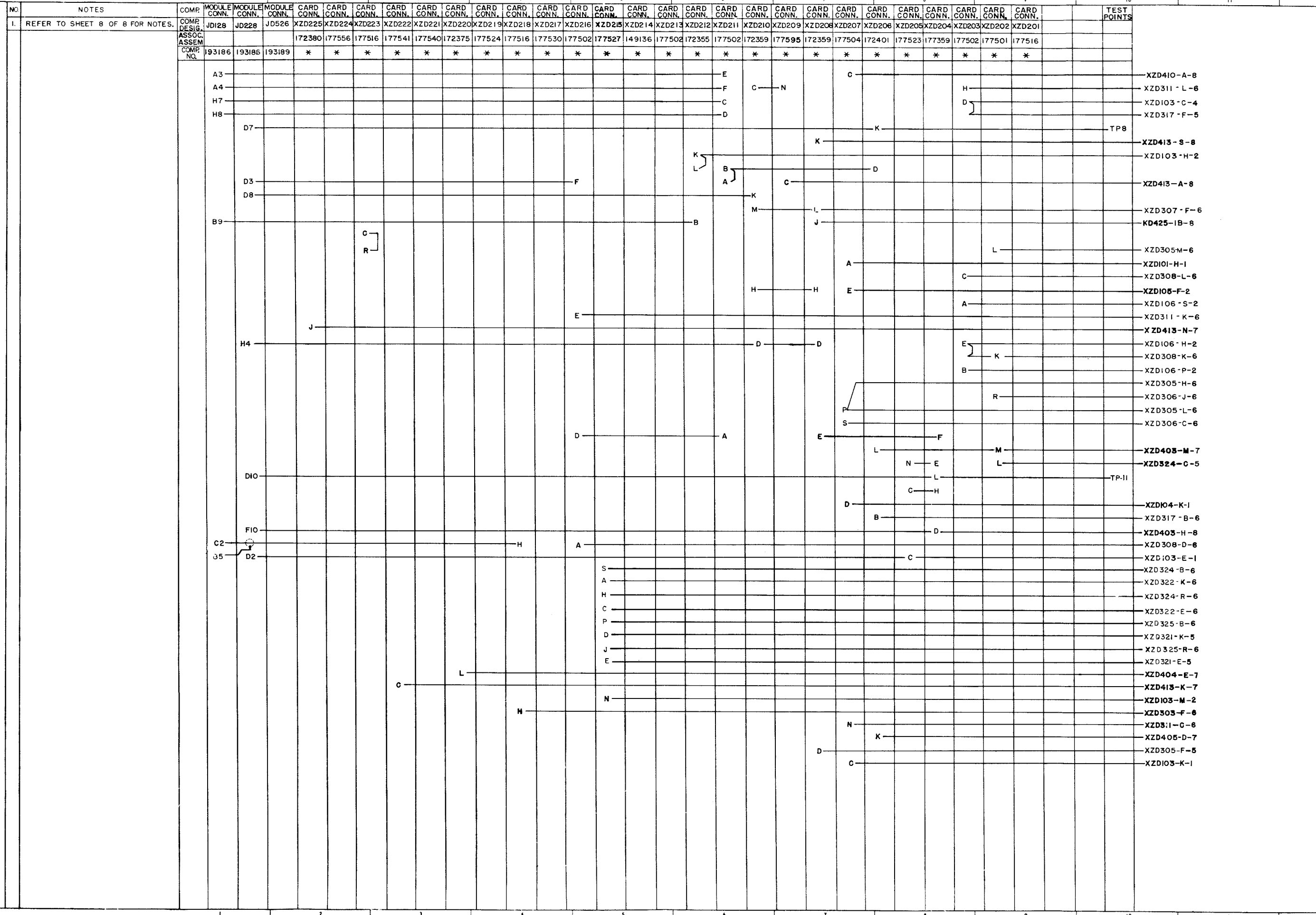
ENGD RCH APPD [Signature]

TELETYPE
CORPORATION

5707 WD

5707 WD

REVISIONS		
ISSUE	DATE	AUTH. NO.
1	1-30-64	79834
2	4-7-64	79849
3	7-10-64	82107
4	8-31-64	82490
5	10-29-64	83661
6	1-11-65	84872
7	2-12-65	83668



SHEET 4 OF 8

ACTUAL WIRING
DIAGRAM FOR
TRANSMITTING
DISTRIBUTOR
AND
CONTROLS
ROW 2

ASSEM. NO. 193005

APPROVALS

D AND R E OF M

E-NUMBER

PHOD. NO. 5707 WD

DATE 7-24-63

P.D. FILE NO. 33-A25AA

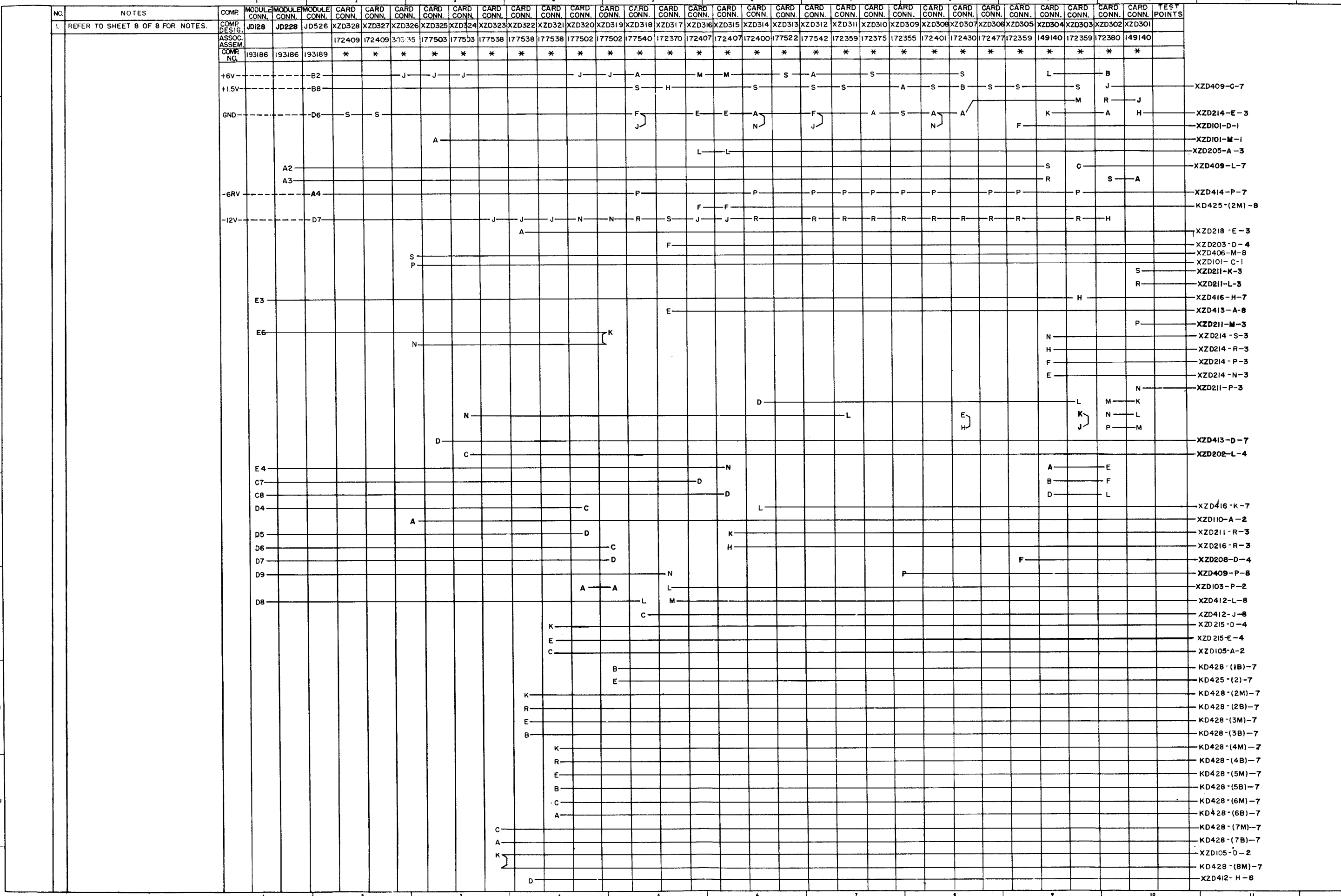
DRAWN HDS CHKD J

ENGD RCH APPD KBR

TELETYPE
CORPORATION

5707 WD

REVISIONS		
ISSUE	DATE	AUTH. NO.
2	11-12-63	79144
3	1-30-64	79834
4	7-64	79849
5	10-64	82107
6	8-31-64	82409
7	10-29-64	83661
8	1-11-65	84872
9	6-28-65	87305
10	12-22-65	89444



SHEET 5 OF 8

ACTUAL WIRING DIAGRAM FOR TRANSMITTING DISTRIBUTOR AND CONTROLS ROW 3

ASSEM. NO. 193005

APPROVALS

D AND R E OF M

E-NUMBER

PROD. NO. 5707 WD

DATE 7-24-63

P.D. FILE NO. 33-A25AA

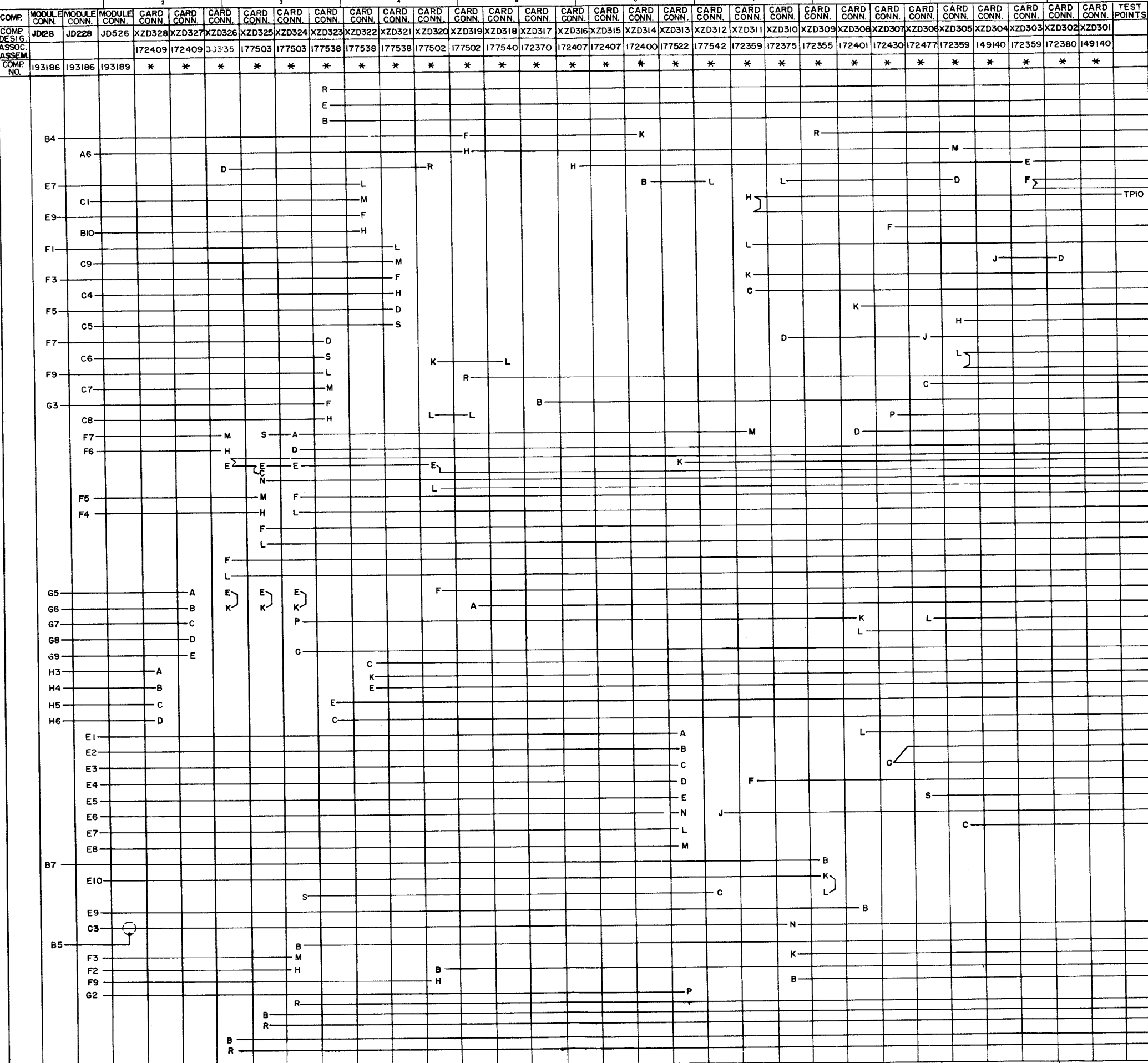
DRAWN HDS CHKD. [Signature]

ENGD. RCH APPD. [Signature]

TELETYPE CORPORATION

5707 WD

REVISIONS		
ISSUE	DATE	AUTH. NO.
2	11-29-63	79452
3	1-30-64	79832
4	4-7-64	79849
5	7-10-64	82107
6	8-31-64	82490
7	10-29-64	83661
8	12-22-65	89444



NOTES
1. REFER TO SHEET 8 OF 8 FOR NOTES.

- KD428-(8B)-7
- KD428-(9M)-7
- KD428-(9B)-7
- XZD409-R-8
- XZD202-L-4
- XZD403-L-7
- XZD218-H-4
- XZD403-F-8
- XZD106-D-2
- XZD208-L-4
- XZD203-H-4
- XZD216-E-4
- XZD207-N-4
- XZD202-K-4
- XZD207-P-4
- XZD202-R-4
- XZD103-S-2
- XZD207-P-4
- XZD413-M-8
- XZD207-S-4
- XZD206-B-4
- KD419-L(14B)-7
- XZD216-A-4
- XZD412-K-8
- XZD413-F-8
- XZD412-N-8
- XZD213-E-3
- XZD405-K-8
- KD425-12M-8
- KD425-(3)-7
- KD425-(4)-8
- KD425-(5)-8
- KD425-(6)-8
- KD425-(7)-8
- KD425-(8)-8
- KD425-(10)-8
- XZD412-F-8
- XZD406-E-8
- XZD203-C-4
- XZD203-F-3
- XZD220-K-3
- XZD215-A-4
- XZD215-C-4
- XZD105-E-2
- XZD105-C-2
- XZD405-B-8
- XZD404-M-7
- XZD201-M-3
- XZD123-K-1
- XZD403-S-7
- XZD409-F-7
- XZD406-J-8
- XZD210-F-3
- XZD215-S-4
- XZD109-H-2
- XZD105-J-2
- XZD110-F-2
- XZD215-H-4
- XZD215-P-4
- XZD215-J-4
- XZD105-S-2
- XZD105-H-2

SHEET 6 OF 8

ACTUAL WIRING
DIAGRAM FOR
TRANSMITTING
DISTRIBUTOR
AND
CONTROLS
ROW 3

ASSEM. NO. 193005

APPROVALS

D AND R
E OF M

E-NUMBER

PROD. NO. 5707 WD

DATE 7-24-63

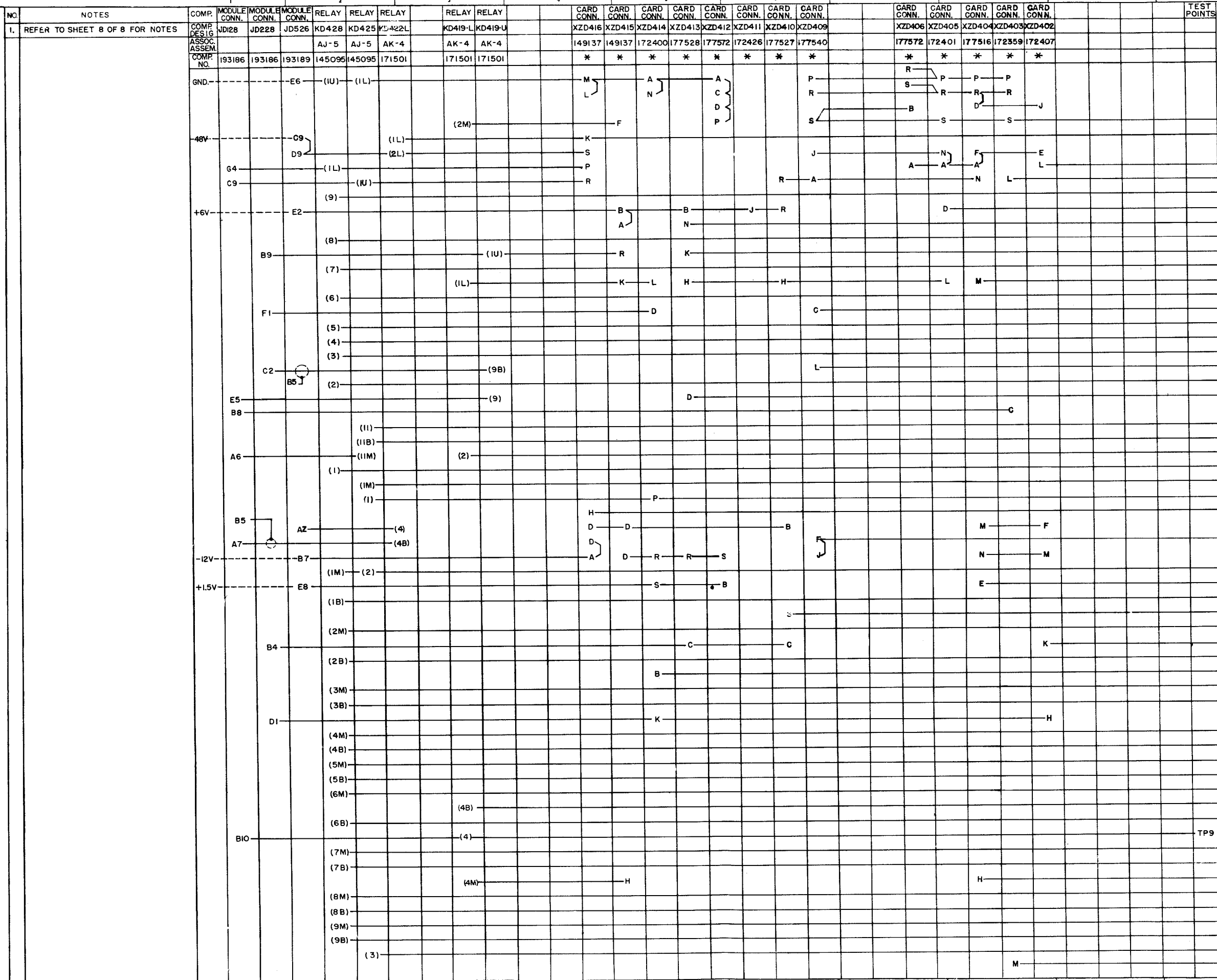
P.D. FILE NO. 33-A25AA

DRAWN HDS CHKD. [Signature]

ENGD. RCH APPD. [Signature]

TELETYPE
CORPORATION

REVISIONS		
ISSUE	DATE	AUTH. NO.
2	11-29-63	79452
3	1-30-64	79834
4	4-7-64	79849
5	7-10-64	82107
6	8-31-64	82490
7	2-3-65	84878



- XZD306-S-6
- XZD314-L-5
- XZD205-A-3
- XZD303-E-6
- XZD115-M-1
- XZD206-K-4
- XZD225-J-4
- XZD116-M-1
- XZD222-C-4
- XZD117-M-1
- XZD307-C-6
- XZD118-M-1
- XZD302-J-5
- XZD119-M-1
- XZD120-M-1
- XZD121-M-1
- XZD303-C-5
- XZD122-M-1
- XZD325-D-6
- XZD220-N-3
- XZD218-H-5
- XZD125-F-2
- XZD220-D-3
- XZD216-H-3
- XZD303-P-5
- XZD303-H-5
- XZD312-J-6
- XZD319-E-5
- XZD220-L-4
- XZD319-B-5
- XZD103-N-1
- XZD322-K-5
- XZD210-L-3
- XZD322-R-5
- XZD106-F-1
- XZD322-E-5
- XZD322-B-5
- XZD321-K-5
- XZD321-R-5
- XZD321-E-5
- XZD321-B-5
- XZD321-C-5
- XZD307-P-6
- XZD321-A-5
- TP9
- XZD323-C-5
- XZD323-A-5
- XZD115-C-1
- XZD323-K-5
- XZD323-R-6
- XZD323-E-6
- XZD323-B-6
- XZD324-F-6
- XZD202-M-4

SHEET 7 OF 8

ACTUAL WIRING DIAGRAM FOR TRANSMITTING DISTRIBUTOR AND CONTROLS ROW 4 ASSEM. NO. 193005

APPROVALS

D AND R	E OF M
---------	--------

E-NUMBER

PROD. NO. 5707WD

DATE 7-24-63

P.D. FILE NO. 33-A25AA

DRAWN HDS CHKD. [Signature]

ENGD. RCH APPD. [Signature]

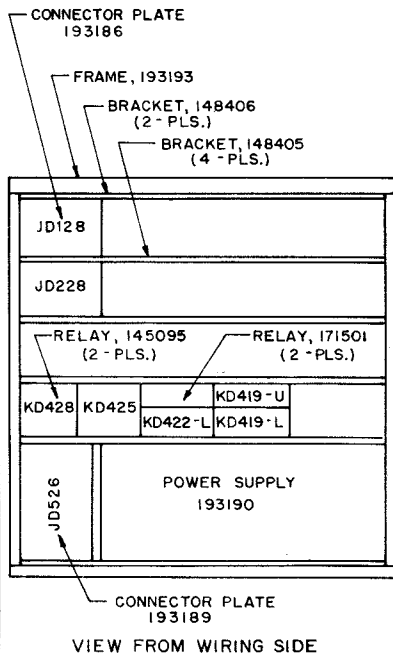
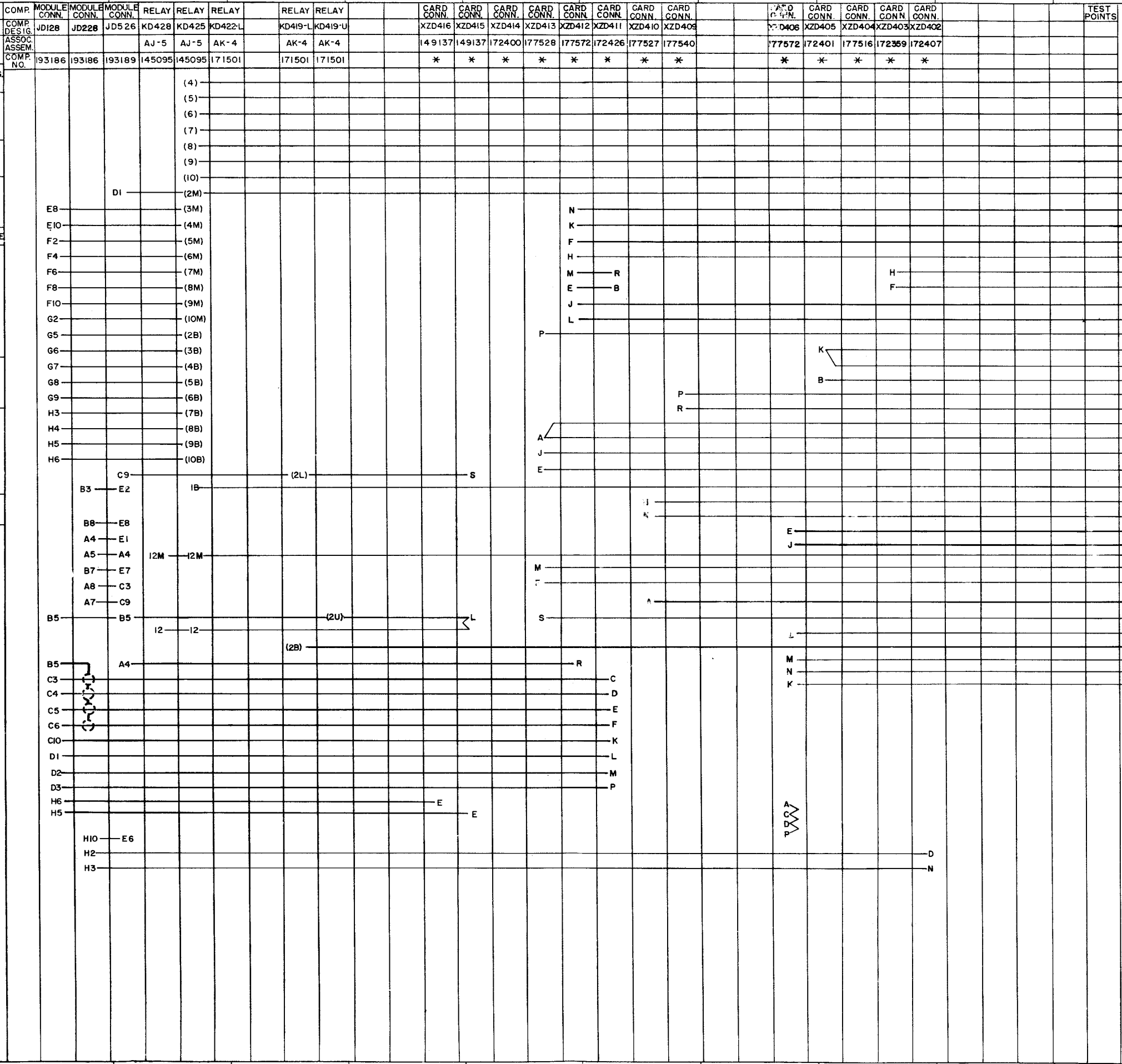
TELETYPE CORPORATION

5707WD

REVISIONS		
ISSUE	DATE	AMTH. NO.
1	11-29-63	79452
2	1-30-64	79834
3	4-7-64	79849
4	8-31-64	82490
5	10-29-64	83661
6	1-11-65	84872
7	4-29-65	84919

1. REFER TO 5708WD FOR SCHEMATIC.
2. ALL VOLTAGES DC UNLESS OTHERWISE SPECIFIED.
3. INDICATES SHIELDED WIRE, 24AWG, UNLESS OTHERWISE SPECIFIED.
4. TERMINAL DESIGNATION ENCLOSED IN PARENTHESES () ARE FOR REFERENCE ONLY AND NOT MARKED ON COMPONENTS.
5. ALL SURFACE WIRE 24AWG GREEN, 31784RM, UNLESS OTHERWISE SPECIFIED.
6. ALL STRAPPING WIRE 24AWG BARE, 39603RM, USE SLEEVING WHERE REQUIRED. DO NOT PULL TAUT BETWEEN TERMINALS.
7. INSERT CARDS BEFORE WIRING MODULE
8. WIRING LEGEND

 XZD 204-L MODULE POSITION
9. USE 31739RM WIRE FOR STRAPPING JD228-A1
 USE 32095RM WIRE FOR STRAPPING JD228-A2
10. * DESIGNATES CARD CONNECTOR 148458



SHEET 8 OF 8

ACTUAL WIRING DIAGRAM FOR TRANSMITTING DISTRIBUTOR AND CONTROLS ROW 4

ASSEM. NO. 193005

APPROVALS

D AND R E OF M

E-NUMBER

PROD. NO. 5707 WD

DATE 7-24-63

P.D. FILE NO. 33-A25AA

DRAWN HDS CHKD. [Signature]

ENGD. RCH APPD. [Signature]

TELETYPE CORPORATION

5707 WD

VIEW FROM WIRING SIDE