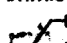



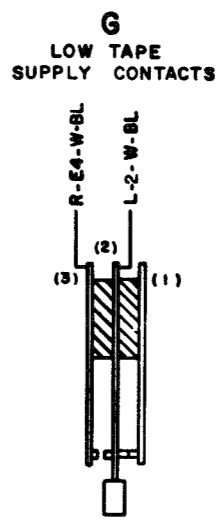
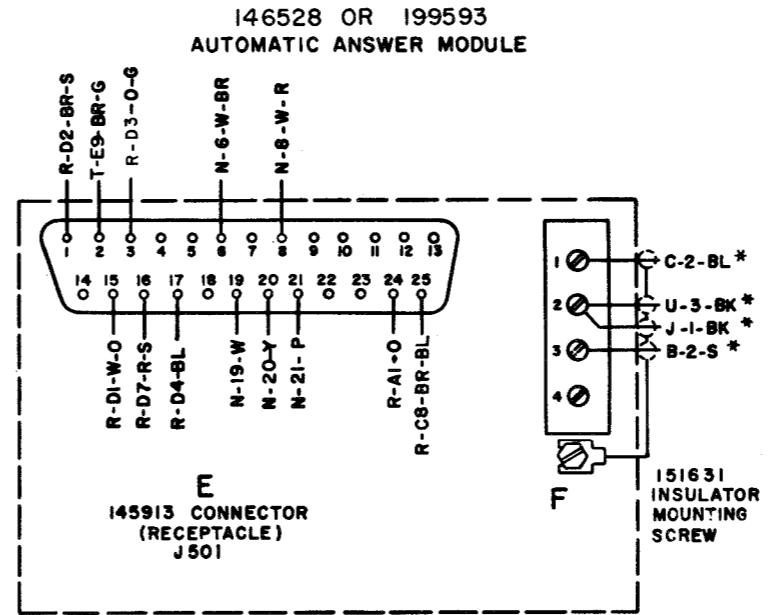
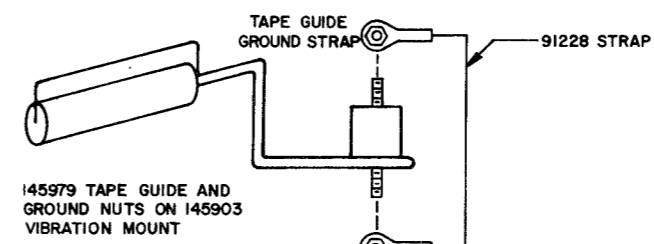
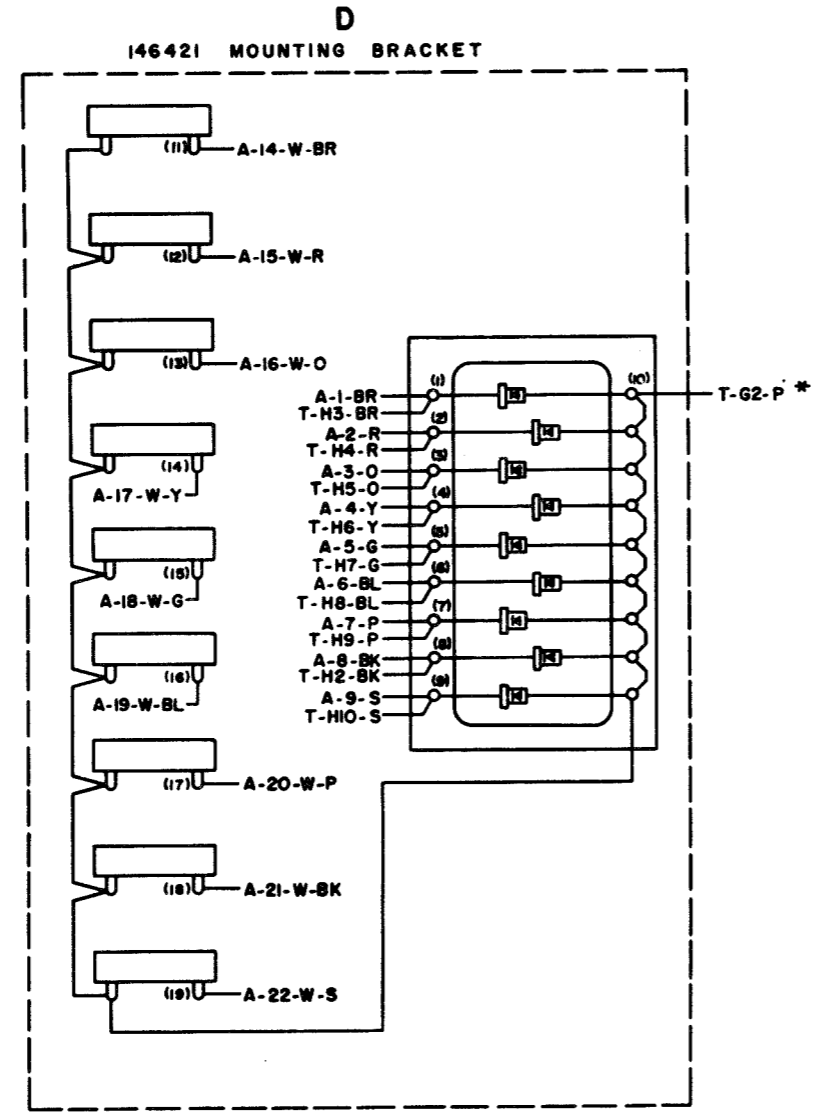
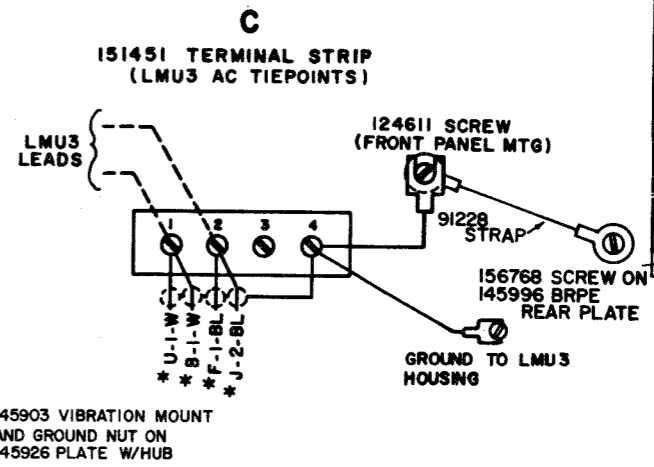
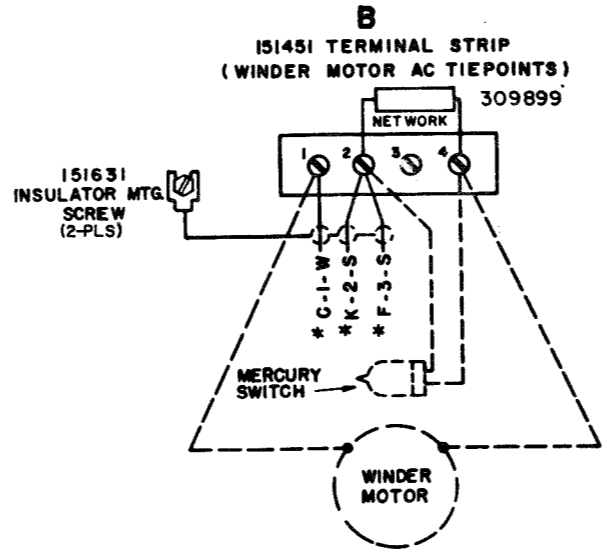
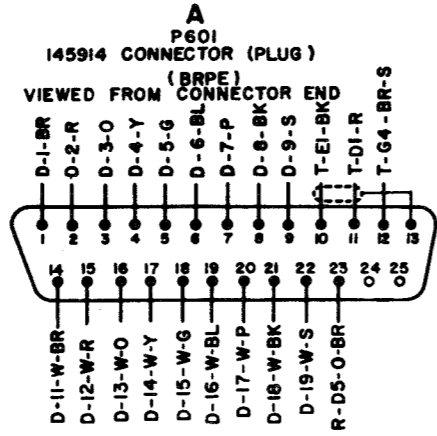


- NO. NOTES**
- WIRING LEGEND:**
 DISTANT TERMINATING AREA
 DISTANT TERMINATING DESIGNATION
 WIRE COLOR CODE
 - USE SLEEVING TO INSULATE, WHERE NECESSARY.
 - ALL CONNECTIONS VIEWED FROM SOLDER END, UNLESS OTHERWISE SPECIFIED.
 - NUMBERS IN PARENTHESES ARE NOT MARKED ON COMPONENTS.
 - * DENOTES 1/8 GA. WIRE.
 -  DENOTES SHIELDED WIRE.
 - FOR SCHEMATIC WIRING DIAGRAM, REFER TO 4773WD.
 - SPARE WIRES TO HAVE 173715 TERMINALS ON DISTANT TERMINATING END, TAPED SEPARATE AND TIED TO CABLE AT N CONNECTOR.

NOTE: REVISION INFORMATION MUST ALSO BE REFLECTED ON THE ISSUE CONTROL RECORD, WHICH IS A PART OF THIS DRAWING.

4702 WD

REVISIONS		
ISSUE	DATE	AUTH. NO.
A	2-1-62	72326
B	8-22-62	74280
C	1-11-63	75636
D	7-11-63	77223
E	8-27-63	77223-1
7	11-3-64	83848
8	12-31-64	82826
9	6-30-65	86052
10	4-26-66	81893-1
11	2-6-68	95185
12	5-26-69	98494



RTTY ELECTRONICS
TELETYPE=Sales-Service-Parts
PO Box 20101 El Sobrante, Ca.
94820. (510)222-3102
mr_rtty@pacbell.net

SEE ISSUE CONTROL RECORD FOR COMPLETE LIST OF SHEETS COMPRISING THIS W.D. SHEET 1

ACTUAL WIRING DIAGRAM FOR AC297 TELESPEED RECEIVING TERMINAL

APPROVALS

D AND R	E OF M
-----	-----

E-NUMBER

PROD. NO. 4702WD

DATE

R.D. FILE NO. 1-A.148/134AA

DRAWN A.S.	CHKD. A.Z.P.
ENGD. J.F.K.	APPD. R.J.R.

TELETYPE CORPORATION

4702 WD

