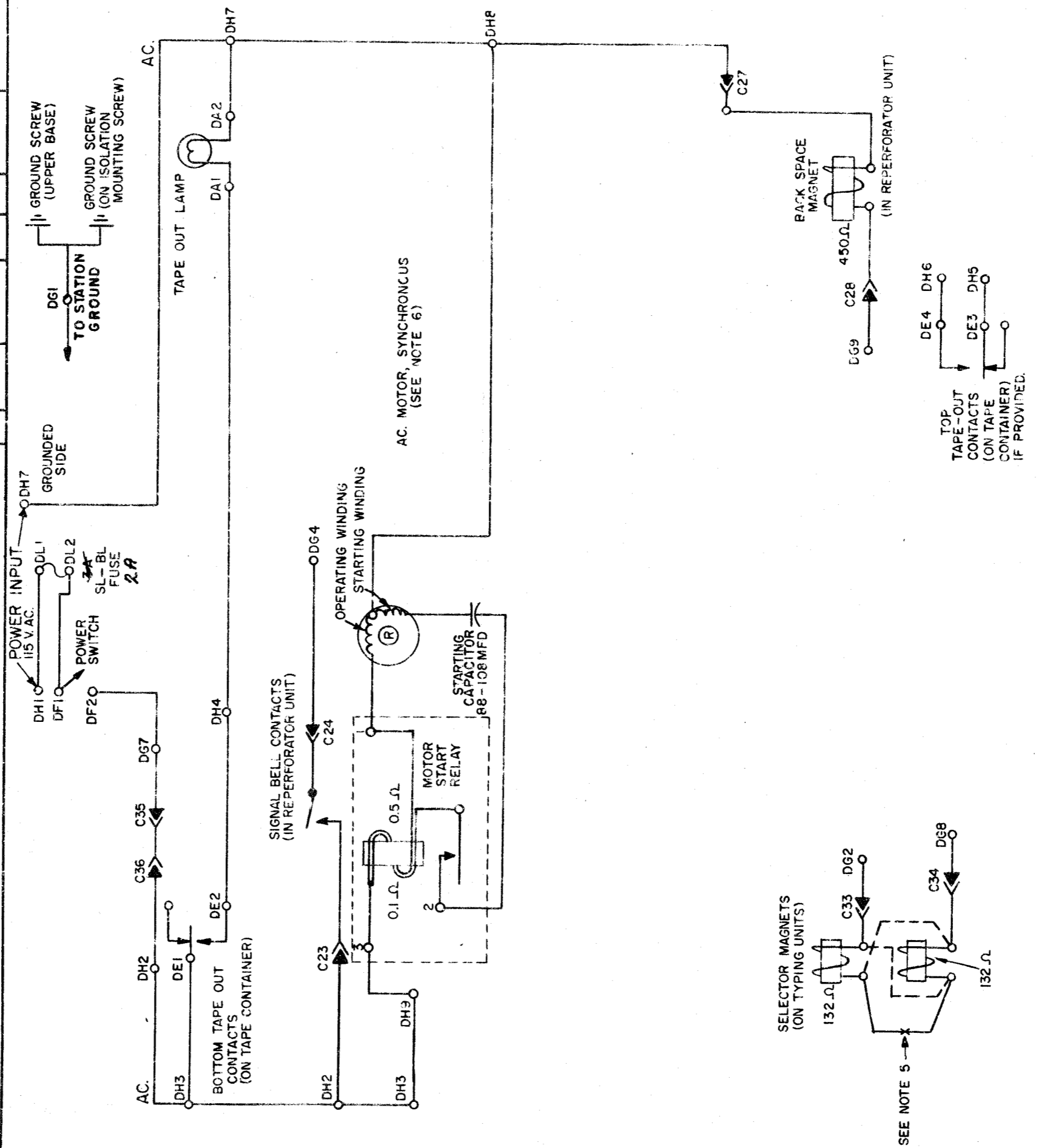


4353WD

ISSUE	DATE	AUTH NO
A	8-16-62	74263
B	11-7-63	8852

- NOTES**
- FOR ACTUAL WIRING DIAGRAMS OF INDIVIDUAL UNITS SEE BELOW:  
 3628 WD REPERFORATOR  
 2900 WD MOTOR UNITS - LMU24  
 4354 WD TYPING REPERFORATOR BASE LRB 31
  - LEGEND:  
 DG TERMINAL BLOCK (ON BASE)  
 DH TERMINAL BLOCK (ON BASE)  
 C 36-POINT CONNECTOR
  - ALL APPARATUS IS SHOWN IN UNOPERATED OR DE-ENERGIZED POSITIONS.
  - (A) RESISTANCE VALUES IN OHMS ( $\Omega$ )  
 (B) CAPACITANCE VALUES IN MICROFARADS (MFD)
  - CIRCUITS SHOWN FOR .020 AMP. NEUTRAL SIGNAL LINE OPERATION. FOR .060 AMP. LINE CURRENT, ADD DASH LINE (----) CONNECTION AND OMIT CONNECTION MARKED (—X—) ON SELECTOR MAGNETS. (SEE 3628 WD LPR ACT. WD.)
  - USE SYNCHRONOUS MOTOR ON REGULATED 60 $\sim$  ( $\pm 1\%$ ) A.C. POWER ONLY. GOVERNED MOTORS AND OTHER POWER CIRCUITS OPERABLE ON 50 TO 60 $\sim$  UNREGULATED A.C.



RTTY ELECTRONICS  
 TELETYPE-Sales-Service-Parts  
 PO Box 20101 El Sobrante, Ca.  
 94820. (510)222-3102  
 mr\_rtty@pacbell.net

SCHEMATIC WIRING DIAGRAM  
 MODEL 28  
 COMPACT ROTR REPERFORATOR BASE LRB 31  
 TYPING REPERFORATOR LPR 40

MOTOR UNIT LMU 24

APPROVALS

D AND R	E OF M
<i>[Signature]</i>	<i>[Signature]</i>

E-NUMBER  
 PROD. NO. 4353WD

DATE: 11-10-60  
 P.D. FILE NO. 1-49.65.A  
 DRAWN. WPH CHKD. *[Signature]*  
 ENGD. R.H.K. APPD. *[Signature]*

TELETYPE CORPORATION  
 4353WD