

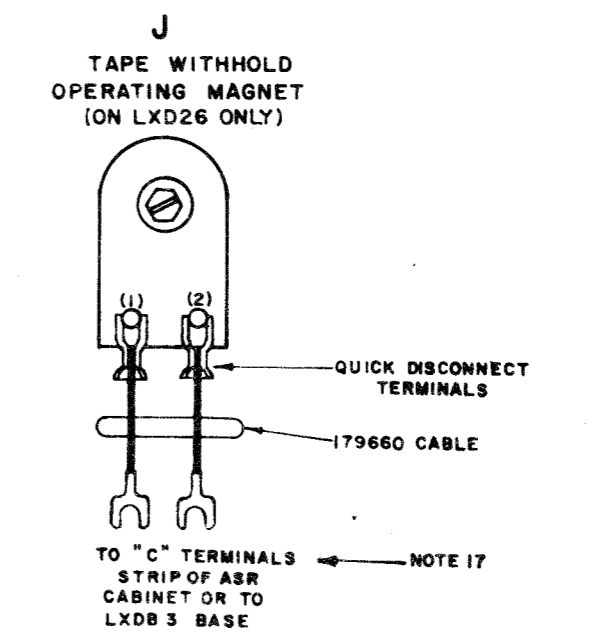
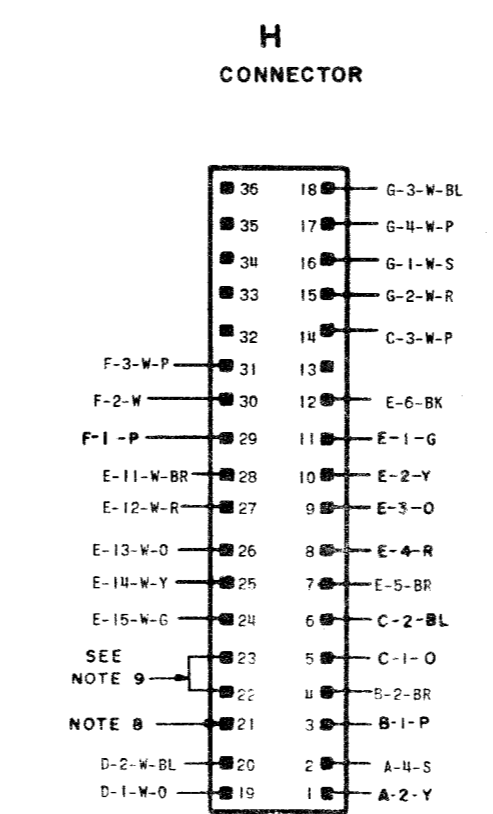
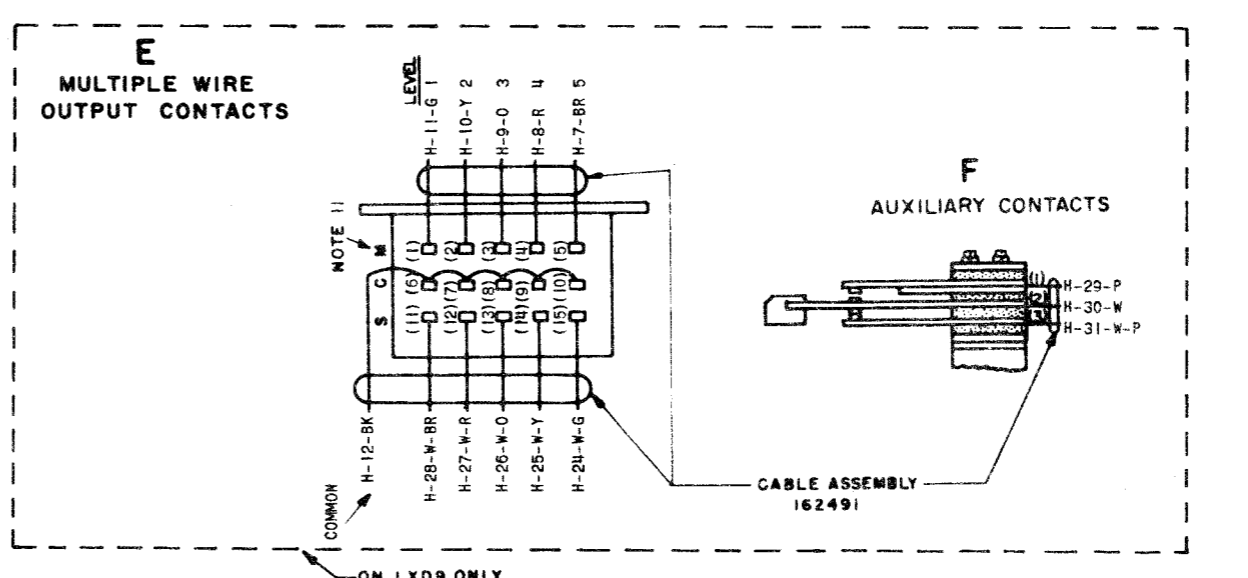
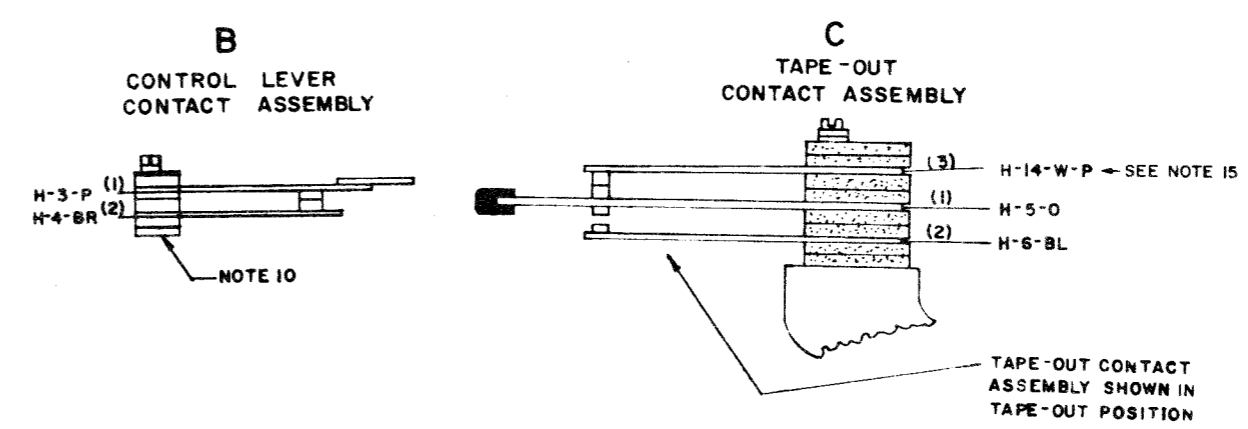
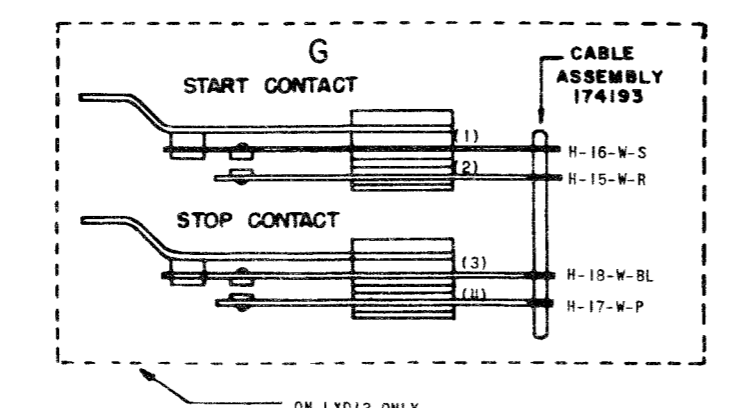
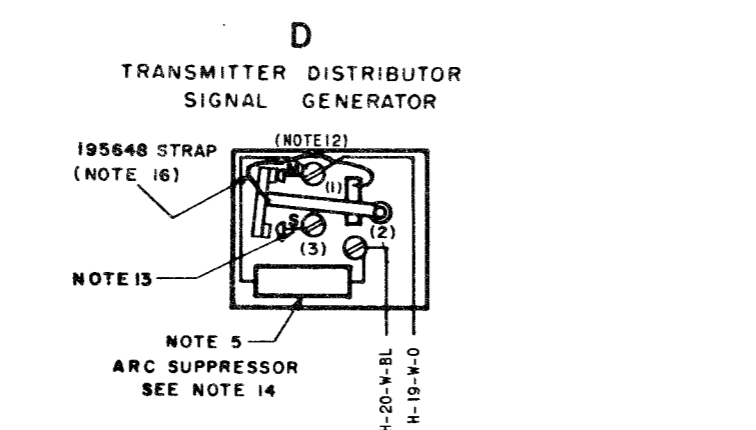
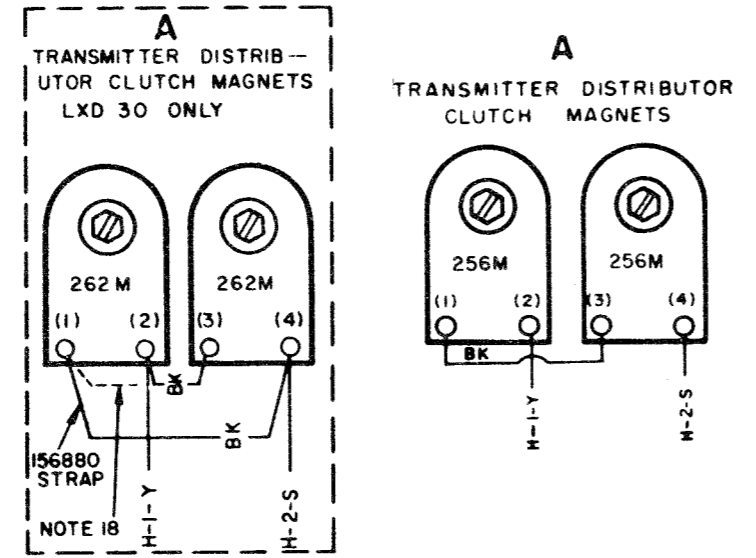
3573WD

REVISIONS

ISSUE	DATE	AUTH. NO.
R	5-21-63	76874
R18	9-4-63	77872
R19	11-12-63	78985
R20	3-10-64	81037

NO.	NOTES										
1	<p>WIRING LEGEND:</p> <p>— DISTANT TERMINATING AREA — DISTANT TERMINATING DESIGNATION</p> <p>— WIRE COLOR CODE</p>										
2	<p>COLOR CODE:</p> <table border="0"> <tr> <td>BK-BLACK</td> <td>BL-BLUE</td> </tr> <tr> <td>BR-BROWN</td> <td>R-RED</td> </tr> <tr> <td>W-WHITE</td> <td>P-PURPLE</td> </tr> <tr> <td>O-ORANGE</td> <td>Y-YELLOW</td> </tr> <tr> <td>G-GREEN</td> <td>S-SLATE</td> </tr> </table>	BK-BLACK	BL-BLUE	BR-BROWN	R-RED	W-WHITE	P-PURPLE	O-ORANGE	Y-YELLOW	G-GREEN	S-SLATE
BK-BLACK	BL-BLUE										
BR-BROWN	R-RED										
W-WHITE	P-PURPLE										
O-ORANGE	Y-YELLOW										
G-GREEN	S-SLATE										
3	CONNECTORS VIEWED FROM SOLDER TERMINAL ENDS.										
4	ALL CONTACTS SHOWN IN UNOPERATED POSITION.										
5	DISCONNECT ONE ARC SUPPRESSOR LEAD WHEN STROBING SIGNAL GENERATOR.										
6	THE NUMBERS ENCLOSED BY PARENTHESES ARE USED FOR REFERENCE AND ARE NOT NECESSARILY SHOWN ON THE PARTS.										
7	115V AC ± 10% POWER TO BE USED ON CLUTCH TRIP MAGNET ASSEMBLY CIRCUIT (256 M COIL ASSEMBLIES). IF DC IS USED, CURRENT MUST BE LIMITED TO 100 MA BY AN EXTERNAL RESISTANCE (COIL RESISTANCE=74 EACH). FOR 120V DC ± 10% POWER, AN EXTERNAL RESISTANCE OF 1000 IS REQUIRED. FOR 50V DC ± 10% POWER, AN EXTERNAL RESISTANCE OF 350 IS REQUIRED.										
8	TERMINAL NO. 21 ON CONNECTOR H IS RESERVED FOR POLAR SIGNAL.										
9	STRAP WITH #22 GAUGE WIRE AS INDICATED.										
10	FOR LXD6 SEE WIRING DIAGRAMS 3292WD & 3284WD FOR WIRING OF HORIZONTAL TAB WHEN USED WITH ASR SET.										
11	WHEN THE LXD9 IS IN THE STOP (IDLE) CONDITION, THE SPACING(S) SIDE OF THE MULTIPLE WIRE OUTPUT CONTACTS ARE CLOSED.										
12	ARC SUPPRESSOR IS OMITTED ON THE LXD802.										
13	W-Y WIRE FROM D-3 TO H-21 FURNISHED WITH LXD13.										
14	OMIT ARC SUPPRESSOR FROM LXD18.										
15	W-P WIRE FROM C-3 TO H-14 FURNISHED WITH LXD19.										
16	TOGGLE STRAP - LXD20 ONLY.										
17	THE TAPE WITHHOLD MAGNET IS TO BE USED WITH 115V DC ± 10% WITH AN 100 OHM SERIES RESISTANCE OR WITH 48V DC ± 10% WITH NO EXTERNAL RESISTANCE. COIL RESISTANCE = 872 OHMS ± 10%. ON ASR INSTALLATION ROUTE CABLE UNDER BASE ALONG LEFT SIDE OF CABINET TO "C" TERMINAL STRIP AND SECURE TO CABINET.										
18	LXD9 IS EQUIPPED WITH 262M MAGNET COIL ASSEMBLIES (210 OHMS EACH) STRAPPED FOR 115V AC NON-PULSED OPERATION. FOR 50MA, 115V DC PULSED OPERATION, ADD EXTERNAL RESISTANCE AND CHANGE CONNECTIONS AS FOLLOWS:										

CONNECTIONS REMOVED	CONNECTION ADDED
A2-A3 A1-A2	A1-A3



ACTUAL WIRING DIAGRAM FOR MODEL 28 TRANSMITTER DISTRIBUTOR LXD4, 5, 9, 13, 15, 18, 19, 20, 26, 601, 602, 800, 801, 802, 30

APPROVALS

D AND R	E OF M
---	---

E-NUMBER  
PROD. NO. 3573WD

DATE 8-22-63  
P.D. FILE NO. 2-58.65AA

DRAWN D.D.G. CHKD.  
ENGD. R.K.H. APPD.

TELETYPE CORPORATION

3573WD