

8615 WD

REVISIONS

ISSUE	DATE	AUTH. NO.
1	8-22-68	195882

NOTE: REVISION INFORMATION MUST ALSO BE REFLECTED ON THE ISSUE CONTROL RECORD, WHICH IS A PART OF THIS DRAWING.

SEE ISSUE CONTROL RECORD FOR COMPLETE LIST OF SHEETS COMPRISING THIS W.D.

SHEET 1

SCHEMATIC AND WIRING DIAGRAM FOR MODEL 28 TRANSMITTER-DISTRIBUTOR LX D 44

APPROVALS

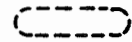
D AND R E OF M

[Signature] *[Signature]*

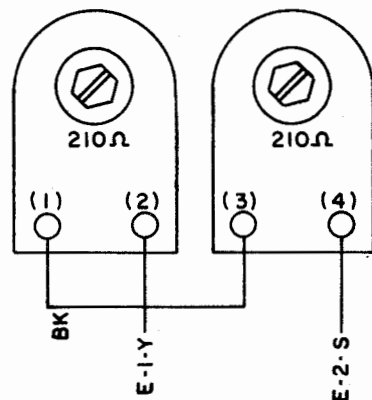
E-NUMBER
 PROD. NO. 8615 WD
 DATE: 3-8-68
 P.D. FILE NO. 44-A2/65AA
 DRAWN WP CHKD. JTS
 ENGD. LKM APPD. RRS

TELETYPE CORPORATION

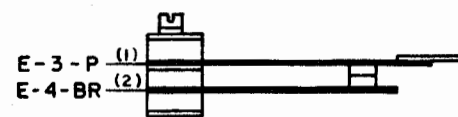
8615 WD

- NO. NOTES
1. WIRING LEGEND:
 DISTANT TERMINATING AREA
 DISTANT TERMINATING DESIGNATION
 A-1-W
 WIRING COLOR CODE
 2. COLOR CODE:
 BK-BLACK R-RED
 BL-BLUE P-PURPLE
 BR-BROWN Y-YELLOW
 O-ORANGE G-GREEN
 W-WHITE S-SLATE
 3. CONNECTORS VIEWED FROM SOLDER TERMINAL ENDS.
 4. ASSOCIATED CABLES:
 173440 CABLE ASSEMBLY
 329334 CABLE ASSEMBLY
 5. TERMINAL DESIGNATION ENCLOSED IN PARENTHESES ARE FOR REFERENCE AND ARE NOT MARKED ON COMPONENT.
 6. TERMINAL NO. 21 ON CONNECTOR E IS RESERVED FOR POLAR SIGNAL.
 7. STRAP WITH 22 GAUGE WIRE AS INDICATED.
 8. ALL RESISTORS 1/2 WATT AND RESISTANCE VALUES IN OHMS, UNLESS OTHERWISE SPECIFIED.
 9. ALL CAPACITANCE VALUES IN MICROFARADS, UNLESS OTHERWISE SPECIFIED.
 10.  INDICATES SHIELDED WIRE.
 11. S-NUMBERS:
 6637S, 6812S

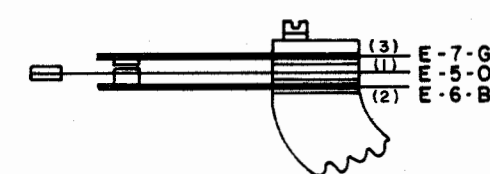
A TRANSMITTER DISTRIBUTOR CLUTCH MAGNETS



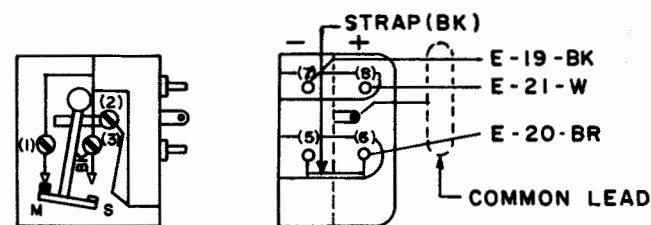
B CONTROL LEVER CONTACT ASSEMBLY



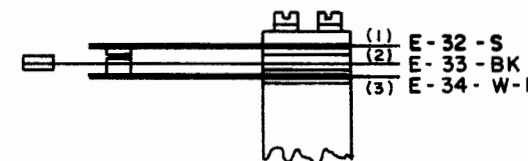
C TAPE OUT CONTACT ASSEMBLY



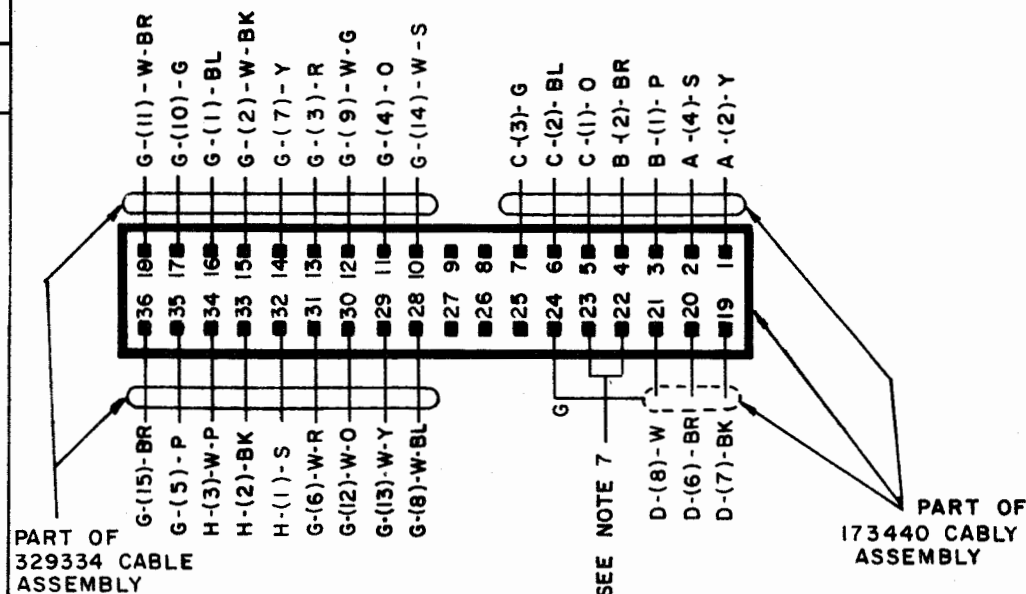
D TRANSMITTER DISTRIBUTOR SIGNAL GENERATOR



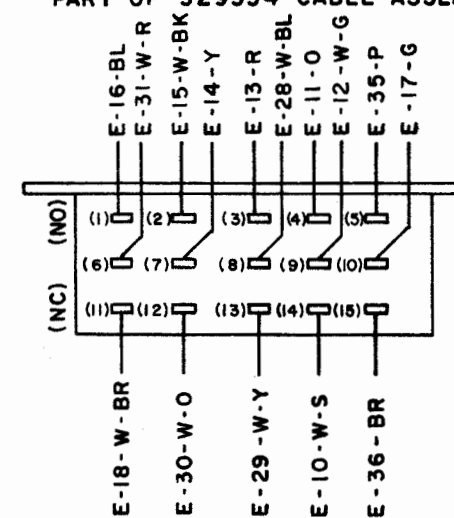
H AUXILIARY CONTACT ASSEMBLY (PART OF 329334 CABLE ASSEMBLY)



E CONNECTOR



G CODE READING CONTACTS PART OF 329334 CABLE ASSEMBLY



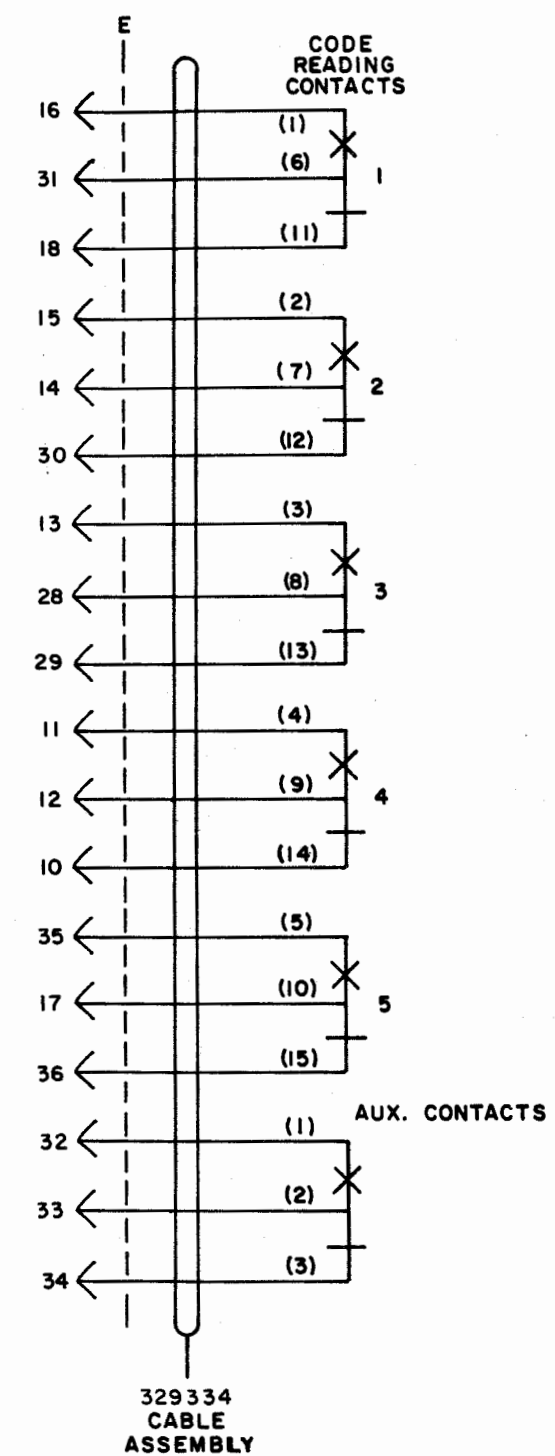
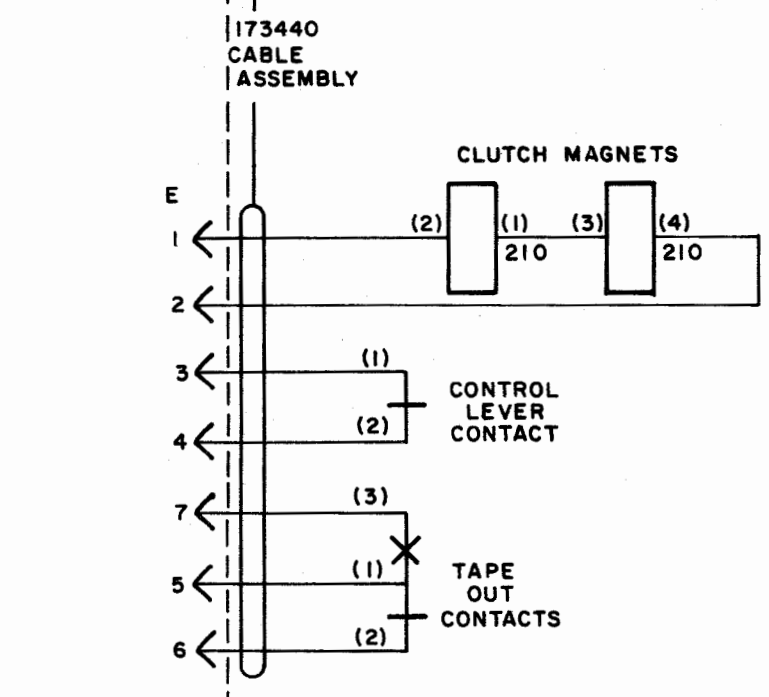
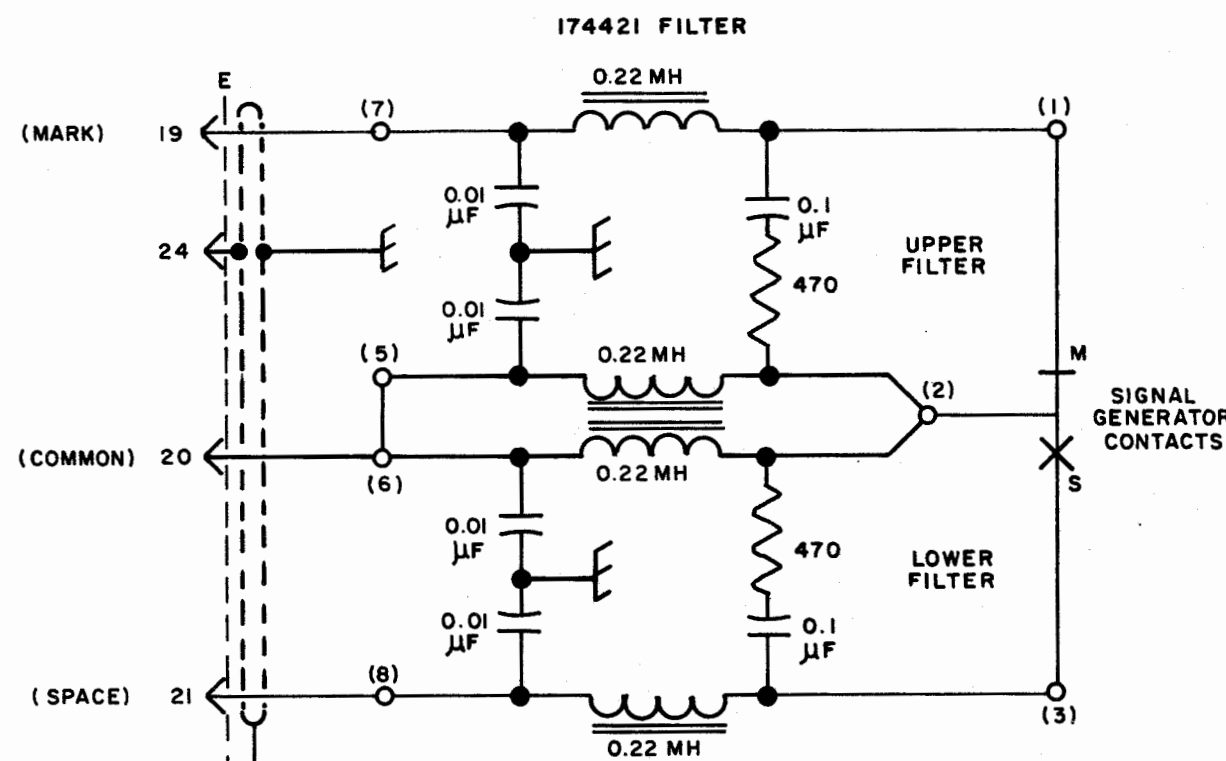
SEE SHEET 1 FOR NOTES

NOTE: REVISION INFORMATION MUST ALSO BE REFLECTED ON THE ISSUE CONTROL RECORD, WHICH IS A PART OF THIS DRAWING.

8615WD

REVISIONS

ISSUE	DATE	AUTH. NO.
1	8-22-68	195882



SEE ISSUE CONTROL RECORD FOR COMPLETE LIST OF SHEETS COMPRISING THIS W.D.

SHEET 2

SCHEMATIC AND WIRING DIAGRAM FOR MODEL 28 TRANSMITTER-DISTRIBUTOR LXD 44

APPROVALS

D AND R <i>HJK</i>	E OF M <i>U</i>
-----------------------	--------------------

E-NUMBER
 PROD. NO. 8615 WD
 DATE: 3-8-67
 P.D. FILE NO 44-A2/65AA
 DRAWN WP CHKD. JTS
 ENGD. LKM APPD. RRS

TELETYPE CORPORATION

8615WD

REVISIONS

ISSUE	DATE	AUTH. NO.
1	9-24-68	19588-R

NOTE: REVISION INFORMATION MUST ALSO BE REFLECTED ON THE ISSUE CONTROL RECORD, WHICH IS A PART OF THIS DRAWING.

SEE ISSUE CONTROL RECORD FOR COMPLETE LIST OF SHEETS COMPRISING THIS W.D.

SHEET 1

SCHEMATIC AND WIRING DIAGRAM LXDB 21 TRANSMITTER BASE AND LMU 19 MOTOR UNIT

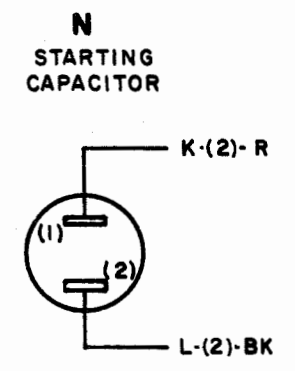
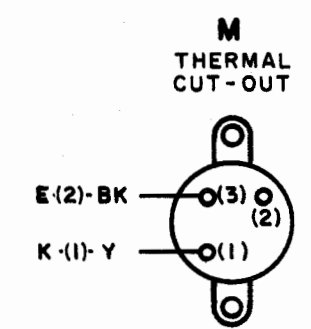
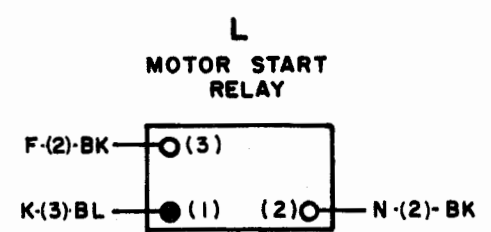
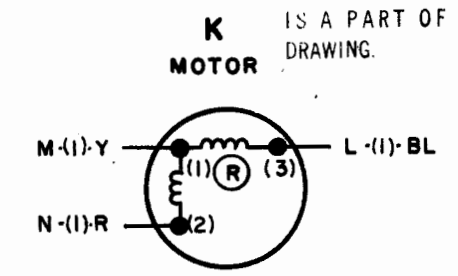
APPROVALS

D AND R	E OF M
<i>DR</i>	<i>EM</i>

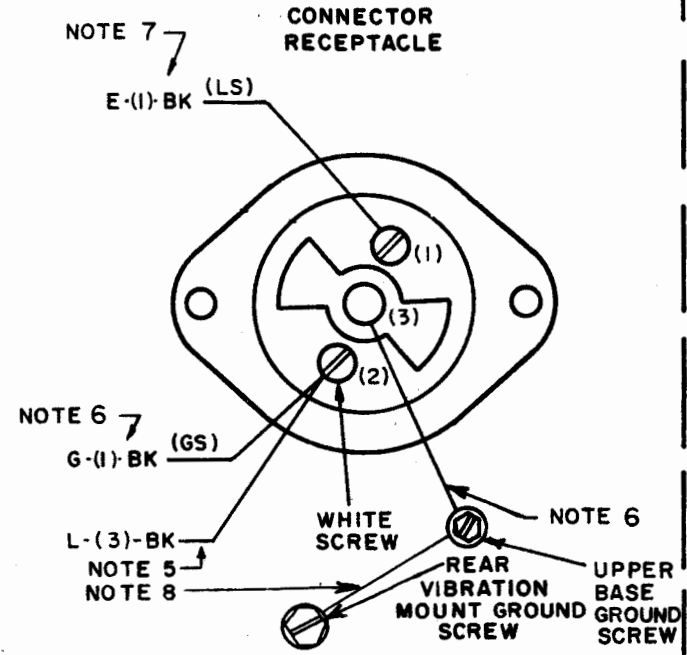
E-NUMBER
 PROD. NO. 8616 WD
 DATE: 3-11-68
 P.D. FILE NO 44-A2/65 AA
 DRAWN WP
 ENG. LKM
 CHKD. JTS
 APPD. RRS

TELETYPE CORPORATION

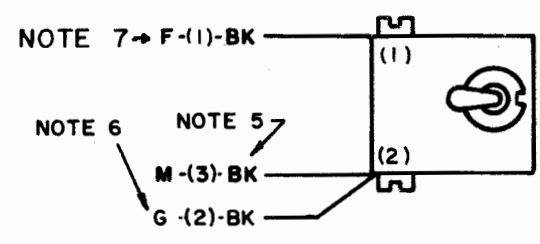
LMU 19



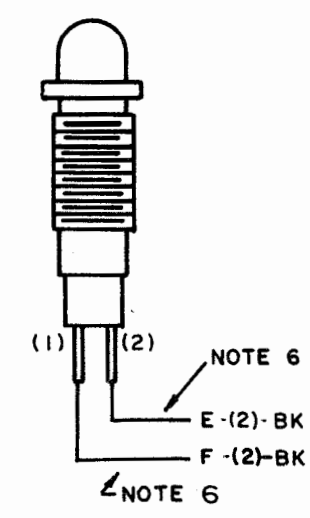
CONNECTOR RECEPTACLE (F)



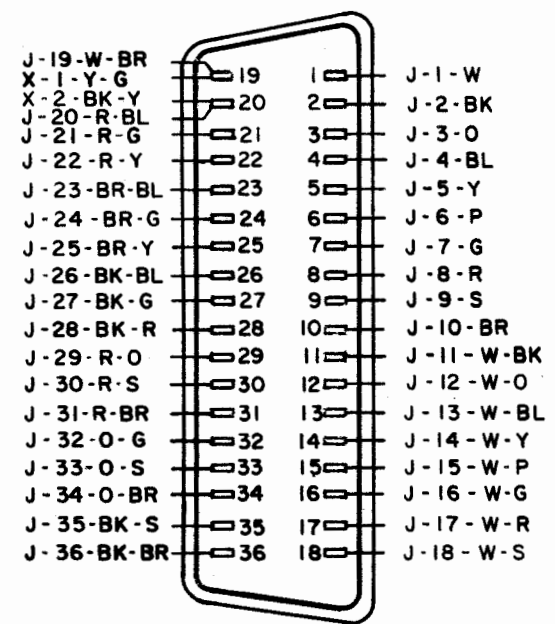
SWITCH (E)



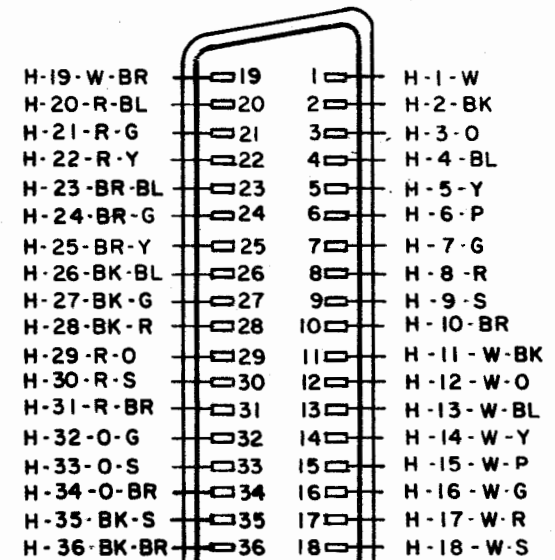
SIGNAL LAMP (G)



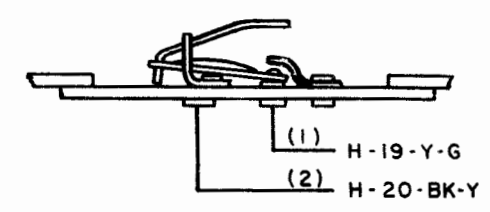
36 POINT CONNECTOR RECEPTACLE (LOWER) (H)



36 POINT CONNECTOR RECEPTACLE (REAR) (J)

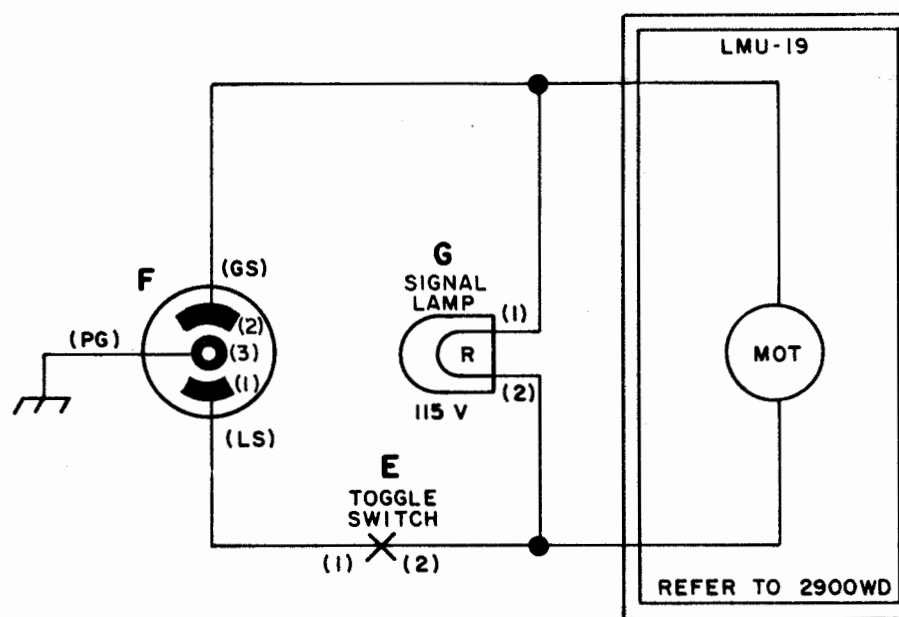
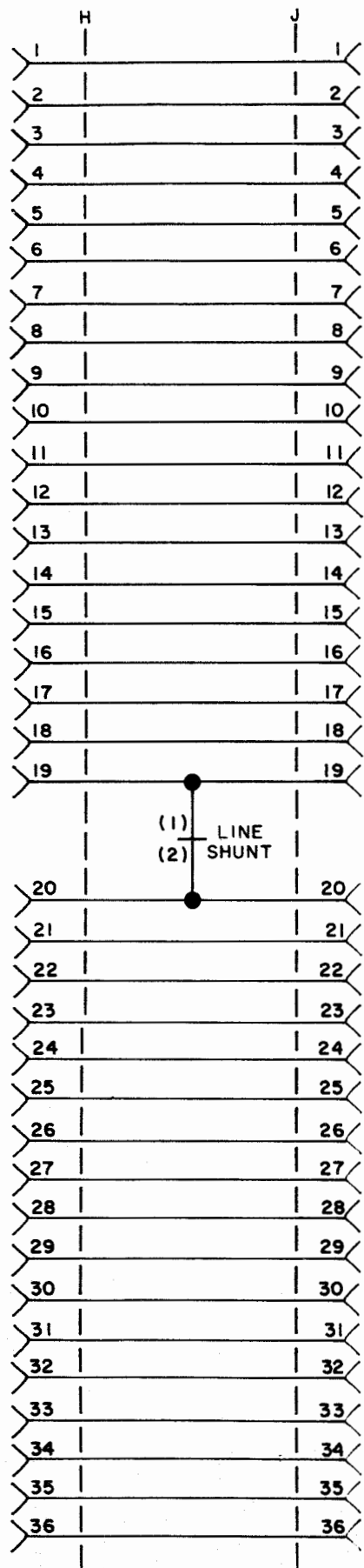


LINE SHUNT SWITCH (X)



- NOTES
1. WIRING LEGEND:
 DISTANT TERMINATING AREA.
 DISTANT TERMINATING DESIGNATION
 A-I-W
 WIRE COLOR CODE
 2. COLOR CODE:
 BK - BLACK R - RED
 BL - BLUE P - PURPLE
 BR - BROWN Y - YELLOW
 O - ORANGE G - GREEN
 W - WHITE S - SLATE
 3. CONNECTORS VIEWED FROM SOLDER TERMINAL ENDS.
 4. ASSOCIATED CABLE ASSEMBLY 329336
 5. THESE LEADS ARE PART OF THE MOTOR UNIT
 6. USE STRAP 117878 TO MAKE THIS CONNECTION.
 7. USE STRAP 82701 TO MAKE THIS CONNECTION.
 8. USE STRAP 156656 TO MAKE THIS CONNECTION.
 9. TERMINAL DESIGNATION ENCLOSED IN PARENTHESES ARE FOR REFERENCE AND ARE NOT MARKED ON COMPONENT.
 10. S-NUMBER: 6820S.

SEE SHEET 1 FOR NOTES



NOTE: REVISION INFORMATION MUST ALSO BE REFLECTED ON THE ISSUE CONTROL RECORD, WHICH IS A PART OF THIS DRAWING.

8616WD		
REVISIONS		
ISSUE	DATE	AUTH. NO.
1	9-24-68	19588-R

SEE ISSUE CONTROL RECORD FOR COMPLETE LIST OF SHEETS COMPRISING THIS W.D.

SHEET 2
 SCHEMATIC AND WIRING DIAGRAM
 LXDB 21 TRANSMITTER BASE AND LMU 19 MOTOR UNIT

APPROVALS

D AND R <i>HJK</i>	E OF M <i>[Signature]</i>
-----------------------	------------------------------

E-NUMBER

PROD. NO. 8616 WD

DATE: 3-7-68

P.D. FILE NO. 4 A2/65AA

DRAWN WP CHKD. *JTS*

ENGD. LKM APPD. *RPS*

TELETYPE CORPORATION

8616W