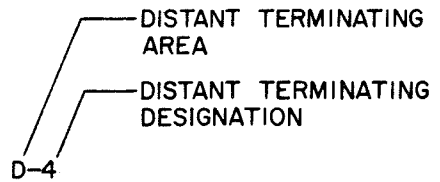


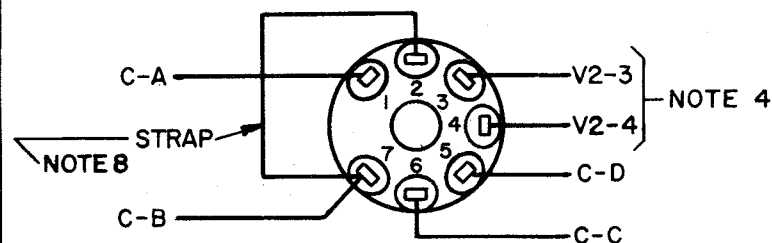
7488 WD

REVISIONS

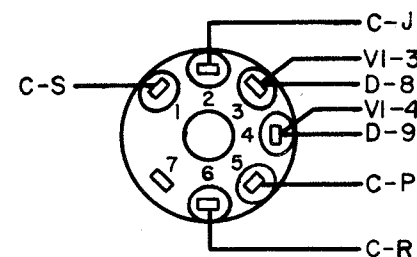
ISSUE	DATE	AUTH. NO.
1	12-16-64	16250 R
2	2-9-65	85778

- NO. NOTES
1. WIRING LEGEND:

 2. ALL SURFACE WIRE 24 AWG GREEN, 31784RM, DO NOT PULL TAUT BETWEEN TERMINALS. USE 155750 TUBING ON V1 AND V2 PINS (13 PLS)
 3. CONNECTOR AND SOCKETS VIEWED FROM SOLDER TERMINAL END.
 4. TWIST WIRES 1-1/2 TURNS PER INCH MIN.
 5. REFER TO 7489WD FOR SCHEMATIC WIRING DIAGRAM.
 6. 72597RM TERMINAL ON EACH WIRE TO TERMINAL BLOCK D. (9 PLS.)
 7. ALL WIRES TO BE AS SHORT AS POSSIBLE.
 8. USE 39603 RM 24GA. TINNED WIRE WITH 60340 RM BLACK TUBING.

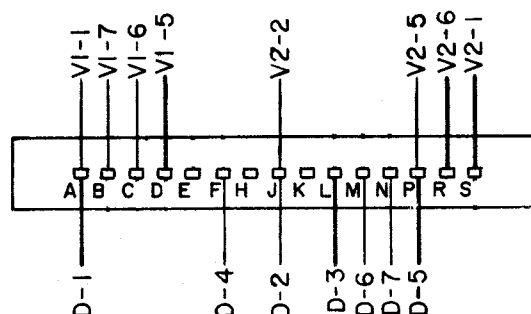
V1
157314 SOCKET
(FOR 6136/6AU6WB TUBE)



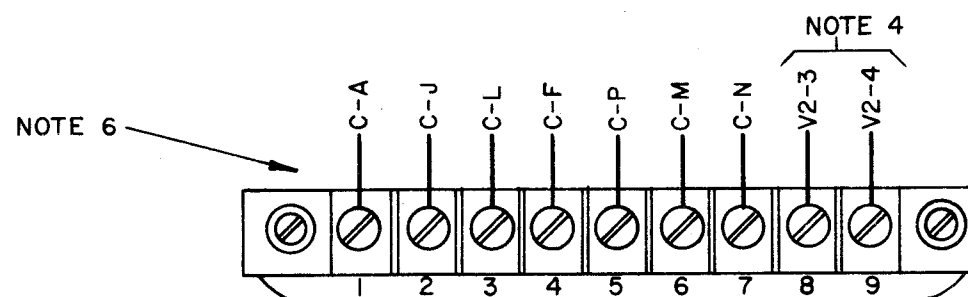
V2
157314 SOCKET
(FOR 6005/6AQ5W TUBE)



C
198649 CONNECTOR
(FOR 309865 CIRCUIT CARD ASSEMBLY)



D
151411 TERMINAL BLOCK



ACTUAL
WIRING DIAGRAM
FOR
VOLTAGE INPUT
SMD
ASSEMBLY
309863

APPROVALS

D AND R E OF M

E-NUMBER

PROD. NO. 7488WD

DATE: 10-14-64

P.D. FILE NO. N-8-G

DRAWN. WPH CHKD. *MSW*

ENGD. JRH APPD. *EJC*

TELETYPE
CORPORATION

7488 WD