

REVISIONS

ISSUE	DATE	AUTH. NO.
A	6-17-57	28-7718
B	3-20-58	28-8693
C	3-3-59	28-10801
D	7-8-59	28-11507
E	9-8-59	28-11692
F	10-21-59	28-11878
G	11-17-59	28-12042
H	12-22-59	28-12323

NOTES

① POWER CIRCUITS WIRED FOR 115 V AC. OR DC. OPERATION.

② WIRE COLOR CODE:
 BK BLACK BL BLUE BR BROWN
 R RED Y YELLOW S SLATE
 P PURPLE O ORANGE
 G GREEN W WHITE

③ CONNECTORS VIEWED FROM SOLDER TERMINAL ENDS.

④ --- DENOTES LEADS FURNISHED WITH OPTIONAL ELECTRICAL COMPONENTS

⑤ STRAP NECESSARY FOR OPERATION WITH LESU 7

⑥ WHEN THE PAPER FEED OUT MOTOR START SWITCH IS SUPPLIED, NO. 1 MOTOR LEAD CONNECTS TO TERMINAL 3 INSTEAD OF TERMINAL 1 OF MOTOR TERMINAL BLOCK.

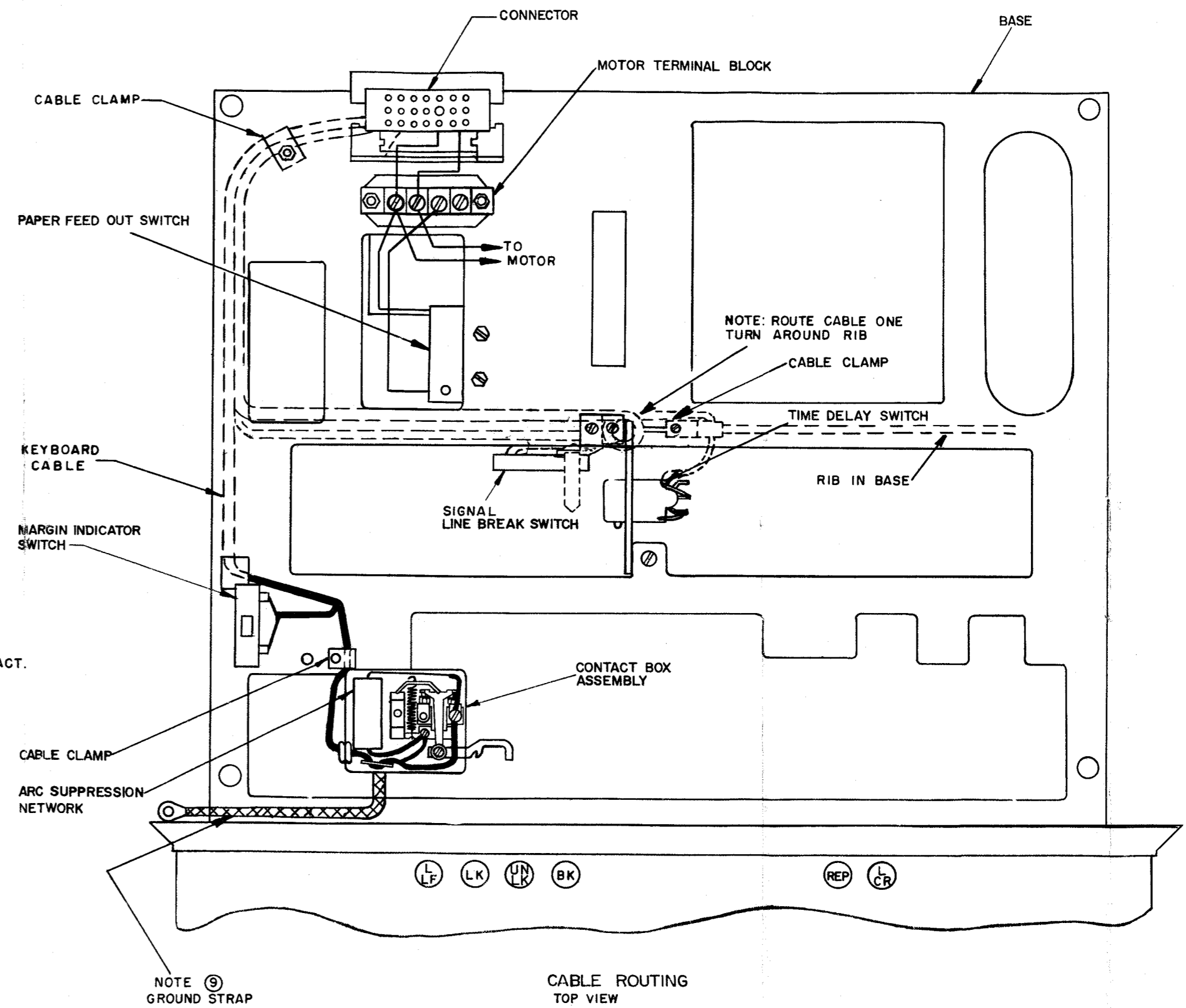
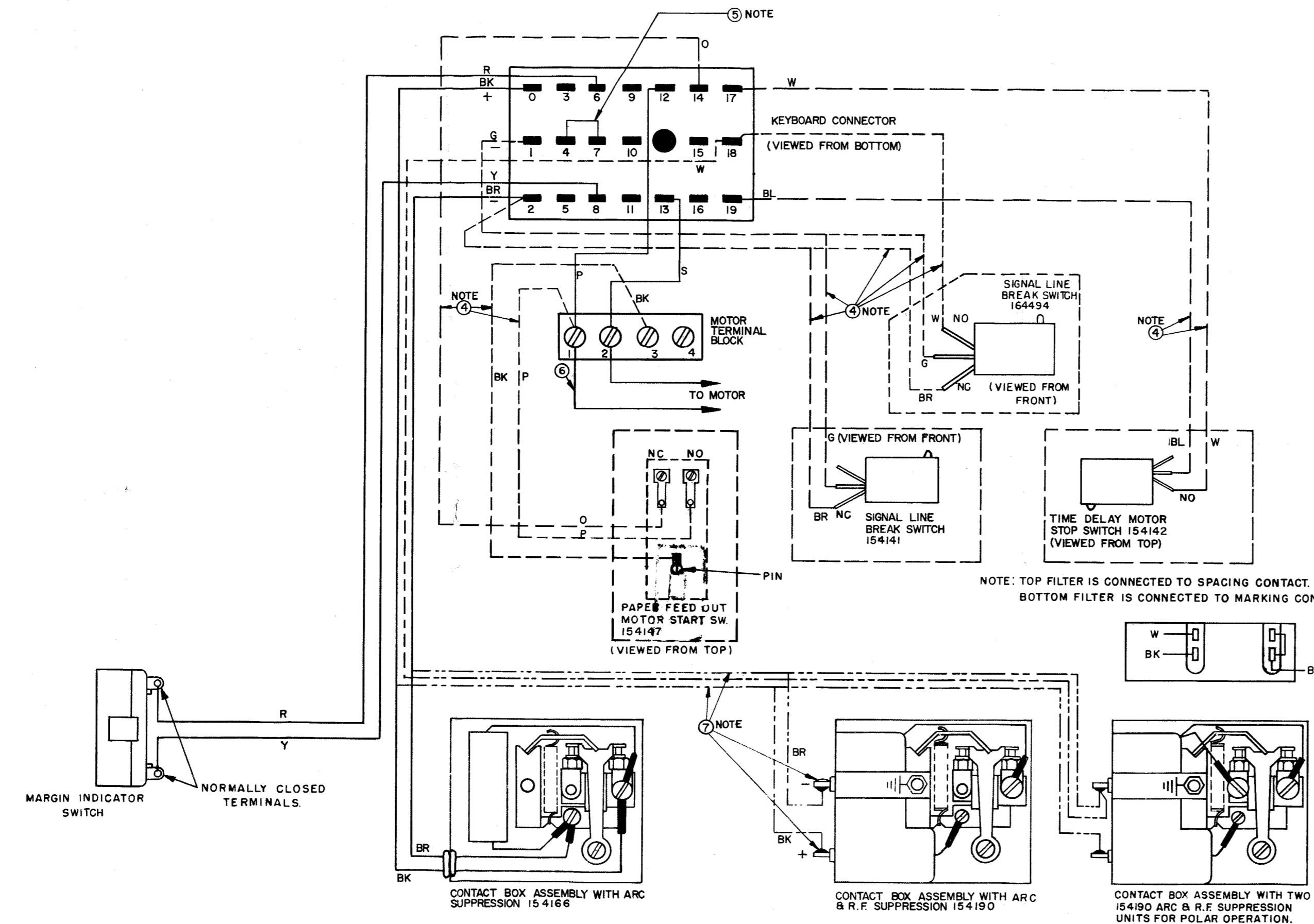
⑦ ----- DENOTES ALTERNATE BASIC CABLE CONNECTION

OPTIONAL ELECTRICAL COMPONENTS

UNIT CODE	ARC SUPPRESSION ONLY	R.F. & ARC SUPPRESSION	SIGNAL LINE BREAK	TIME DELAY	PAPER FEED-OUT	SIGNAL LINE BREAK
	154166	154190	154141	154142	154147	164494
LK 6	●					
LK 8		●	●	●		
LK 9		●	●			
LK 10		●	●	●		
LK 11		●	●			
LK 12		●	●		●	
LK 13		●	●			
LK 14	●		●	●		
LK 15	●		●			
LK 16	●		●			
LK 18		● (2)				●
LK 19		● (2)				

● DENOTES ITEM PRESENT

⑨ GROUND STRAP TERMINATES AT THE LEFT SIDE RAIL OF THE CRADLE ASSEMBLY IN THE ASSOCIATED CABINET.



ACTUAL WIRING DIAGRAM FOR MODEL 28 KEYBOARD LK 6,8 AND UP (MARK III)

DATE: 9-2-55
 P.D. FILE NO. 2-12 65 AA
 DRAWN: I.B. CHKD: [Signature]
 ENGD. M.F.M. APPD: [Signature]