

**NOTES**

1. **WIRING LEGEND:**  
  
 DISTANT TERMINATING AREA  
 DISTANT TERMINAL DESIGNATION  
 WIRE COLOR CODE

2. **COLOR CODE:**

BK — BLACK	W — BK — WHITE	BLK — BLACK
BL — BLUE	W — BL — WHITE	BLU — BLUE
BR — BROWN	W — BR — WHITE	BRO — BROWN
G — GREEN	W — G — WHITE	GRN — GREEN
O — ORANGE	W — O — WHITE	ORG — ORANGE
P — PURPLE	W — P — WHITE	PUR — PURPLE
R — RED	W — R — WHITE	RED — RED
S — SLATE	W — S — WHITE	SLT — SLATE
Y — YELLOW	W — Y — WHITE	YEL — YELLOW
W — WHITE		

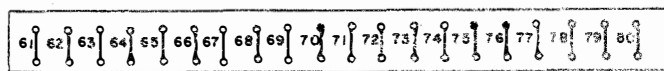
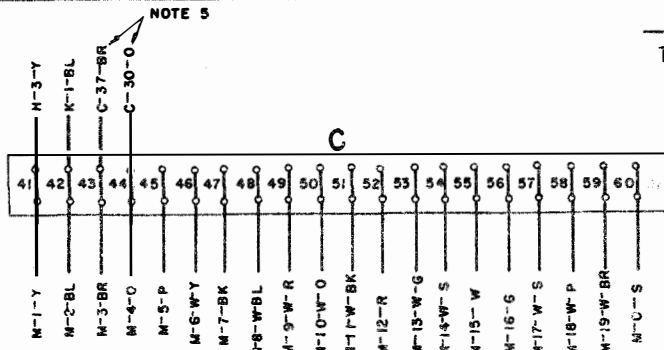
3. DENOTES: TAPED WIRE  
 DENOTES: SPLICED AND TAPED WIRE

4. CONNECTOR VIEWED FROM SOLDER TERMINAL END.

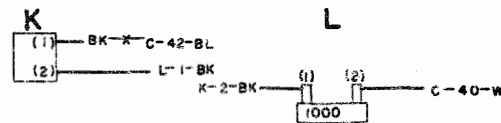
5. 162370 CABLE ASSEMBLY

6. WHEN BUSY LAMP IS USED CABINET WIRING MUST BE CHANGED. REMOVE THE YELLOW OR SLATE LEAD FROM THE COPYLIGHT SWITCH AND TERMINAL 37 OF CABINET TERMINAL BLOCK "C". TAPE AND TIE BACK BOTH ENDS. CONNECT YELLOW LEAD (OF 157150 CABLE) TO C41 AND TO COPYLIGHT SWITCH.

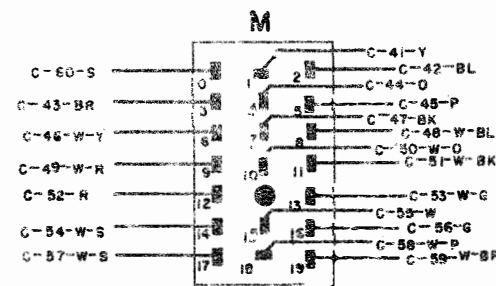
**153920 & 157532 MODIFICATION KITS  
 TO ADD SELECTIVE CALLING TO LAC AND LAAC**



**AUXILIARY CABINET TERMINAL BLOCK ASSEMBLY  
 157152  
 (RIGHT SIDE)**

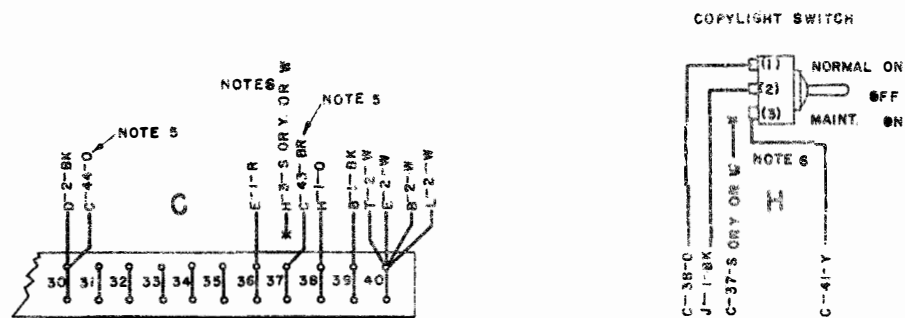


**BUSY LAMP ASSEMBLY  
 157157  
 (PART OF 153920 MOD KIT)**



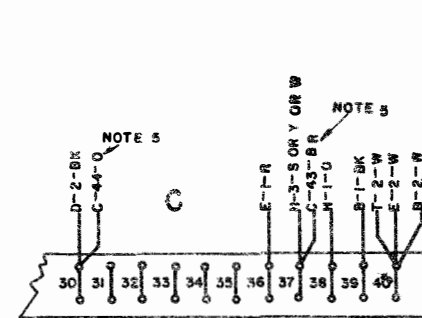
**AUXILIARY TYPING UNIT  
 CABLE & CONNECTOR ASSEMBLY  
 157156**

**(153920 MOD KIT) WIRING CHANGES TO LAC AND LAAC**



(SEE 3236 WD)

**(157532 MOD KIT) WIRING CHANGES TO LAC AND LAAC**



(SEE 3236 WD)

**2918 WD  
 REVISIONS**

ISSUE	DATE	AUTH. NO.
B	4-2-57	28-7583
C	1-7-58	28-10450
D	10-4-63	77560

CASE 5006-105

ACTUAL  
 WIRING DIAGRAM  
 MODEL 28

PRINTER CABINET  
 LAC AND LAAC

ARRANGED FOR  
 SELECTIVE CALLING  
 153920 MOD. KIT  
 157532 MOD. KIT

DATE: 4-15-57  
 RD. FILE NO. 1-30.65.125A  
 DRAWN: J.M.K. CHKD: R.D.  
 ENGR. S.M.S. APPD.

**TELETYPE  
 CORPORATION**

**5 2918 WD**