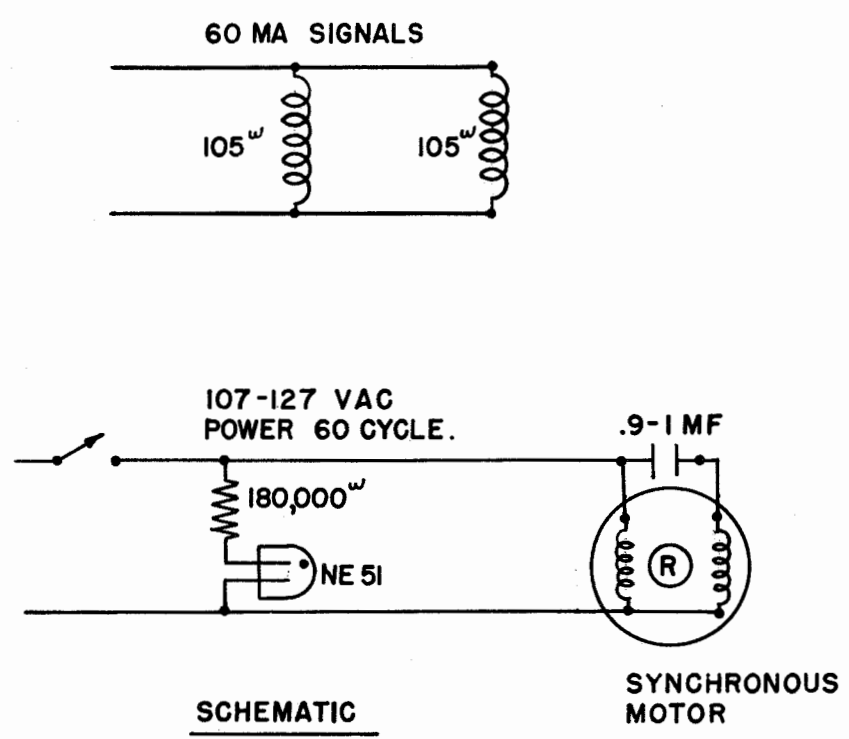
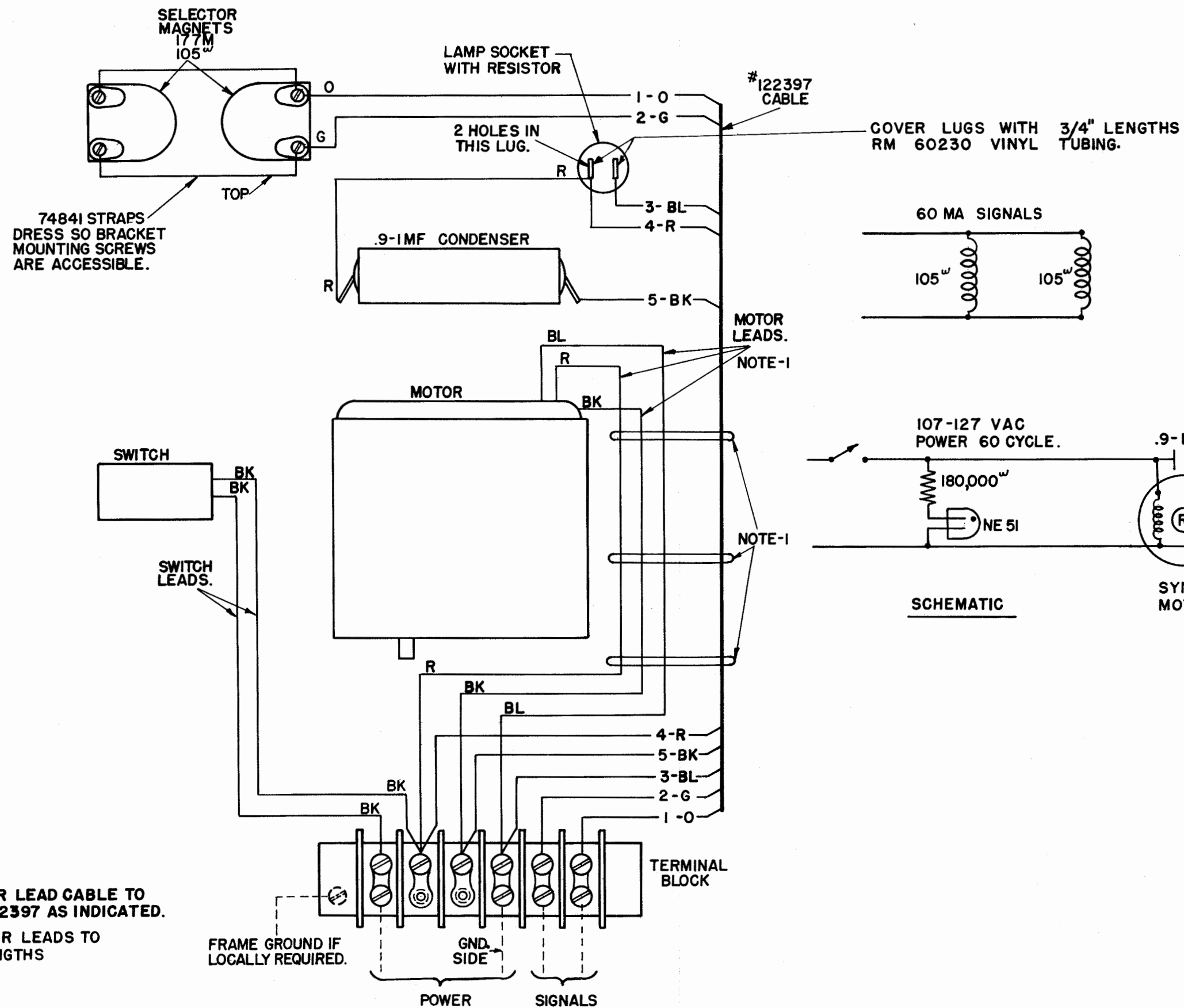


REVISIONS	
A	12-24-52 56029



**NOTE-1**  
TIE MOTOR LEAD CABLE TO  
CABLE #122397 AS INDICATED.  
CUT MOTOR LEADS TO  
11" LENGTHS

FRAME GROUND IF  
LOCALLY REQUIRED.

GND. SIDE

POWER SIGNALS

ACTUAL

2665 WD A	
DATE: 9-27-50	
ACTUAL & SCHEMATIC WIRING DIAGRAM	
WORD METER WM 200 ** 60 WM 200 ** 75	
DRAWN: R.J.R	APPROVED:
ENG'R'D: E.J.C	<i>FR</i>
CHECKED: <i>LS. BW</i>	
FILE: 4AA41A	
<b>TELETYPE CORPORATION</b>	