

EVENT — RESULT

DAYTON HAMVENTION
DIGITAL DIGEST FORUM
RTTY DINNER
RTTY HOSPITALITY

SUCCESS
SUCCESS
SUCCESS
SUCCESS



DIGITAL DIGEST PANELISTS

L to R - Dr. Phil Anderson, W0XI (Kantronics) - Craig Martin, KR6T (Kenwood) - Bill Henry, K9GWT (Hal Communications) - Dr. Alan Chandler, K6RFK (Advanced Electronics Applications - AEA) - (Myself) Dale Sinner, W6IWO (RTTY Journal and Panel Moderator) - Roy Gould, KT1N (DX NEWS - RTTY Journal) - Bill Snyder, W0LHS (Digital Bus, Worldradio) - Dick Uhrmacher, K0VKH (MSO's - RTTY Journal) - Jerry Trichter, W4IUF (International Mailbox SYSOP)

DX NEWS

HITS & MISSES

PACKET

MSO'S

CONNECTIONS

DAYTON HIGHLIGHTS

CONTEST RESULTS

RTTY JOURNAL Dale S. Sinner, W6IWO OWNER - EDITOR - PUBLISHER ALL CORRESPONDENCE TO : 9085 La Casita Ave. Fountain Valley, Ca 92708 TELE: 714-847-5058	SUBSCRIPTION RATES USA \$10.00 per yr. CANADA/MEXICO surf \$10.00 per yr. CANADA/MEXICO air \$12.00 per yr. FOREIGN surf \$10.00 per yr. FOREIGN air \$15.00 per yr. All monies in U. S. currency only
---	---

The publisher assumes no responsibility for errors or omissions and assumes no liability for same. Reproductions of this magazine must be accompanied by credit to the RTTY JOURNAL and the author. Publication will be on or about the twentieth (20) of the month. Subscriptions and ads must be paid for by cash, check, or money order in U. S. funds only, prior to subscription or ad start.

POSTMASTER : The RTTY JOURNAL (USPS 391850) is published monthly except May/June and July/Aug issues which are combined for \$10.00 per year by RTTY JOURNAL, 9085 La Casita Ave., Fountain Valley, Ca., 92708. Second class postage paid at Santa Ana, Ca. and additional mailing offices.
Postmaster : Send address changes to RTTY JOURNAL, 9085 La Casita Ave., Fountain Valley, Ca., 92708. ISSN 0033 - 7161

**THE CANADIAN AMATEUR RADIO
TELETYPE GROUP (CARTG)**

**26th Annual RTTY DX Sweepstakes
1986**

SINGLE OPERATOR SCORES

*1.	I2OLW	2,904,528
*2.	IK5CKL	2,483,712
*3.	VK5RY	1,310,544
*4.	YV5KAJ	957,246
*5.	SM5FUG	677,962
*6.	WB5HBR	525,040
7.	W3KV	522,985
*8.	VK2SG	480,346
*9.	VE2JR	460,200
*10.	W6JOX	447,710
*11.	VE7YB	432,824
*12.	VE7FYM	400,890
13.	VE1TE	397,040
*14.	WYMI	340,552
*15.	K6WZ	334,984
*16.	VK2EG	325,172
*17.	WF5E	235,552
18.	HB9HK	234,908
*19.	DJ0CP	219,442
20.	SP9BCH	151,320
21.	K8CV	118,928
22.	PA3DBS	118,020
23.	HA6VV	115,870
24.	GW3EHN	108,725

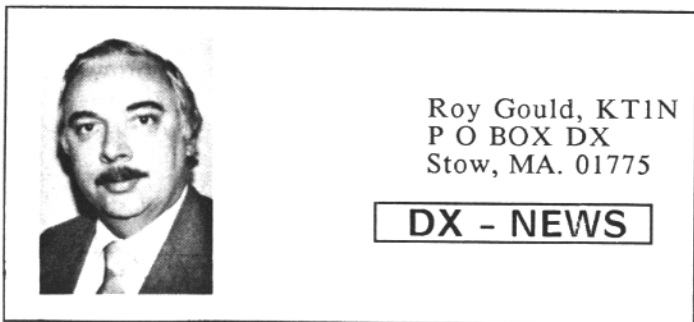
25.	HB9BNP	95,285
26.	SP3XR	90,200
27.	HI8DLA	73,832
28.	KL7PG	46,570
29.	HA5CP	42,104
30.	ZL3AKI	33,968
31.	VE7BDQ	26,229
32.	VE2QO	17,520
33.	WA9TMU	13,690
34.	SP3BYZ	12,885
35.	DF5BX	11,128
36.	VK2BQS	6,594
37.	HA6QJ	4,611
38.	SM7BGE	3,935
39.	YO9OMF	1,216
40.	DK5JK	970
41.	YO2BEH	756

MULTI OPERATOR

*1.	LZ2KIM	4,235,060
*2.	LZ1KDP	3,584,390
*3.	WA7EGA	2,370,736
*4.	DL6QH/A	883,338
*5.	IK2HGD	797,208
*6.	OK3KII	394,700
7.	VE3UR	332,448
8.	HA6KQD	2,720

SWL

*1.	ONL383	982,730
*2.	NL4483	560,072
3.	DE1GMH	41,100



Roy Gould, KT1N
P O BOX DX
Stow, MA. 01775

DX - NEWS

Well Dayton was a huge success again, I think the biggest crowd I have ever seen there. Right from Friday on the parking was terrible. Did get a chance to meet some of the gang all though I did miss the RTTY dinner as I had a very bad ear infection the entire weekend which just about made me deaf as well as uncomfortable. The Forum, The Digital Digest, was well attended and those in attendance seemed to like the panel format used this year. Not many RTTY DXers in attendance but I did manage to meet a few of them. Walter, DJ6QT, is usually in attendance at Dayton but didn't make this year. He always brings his latest cards from his DX trips. Roger, N4ZC, an old friend, was holding a room for him but I guess something came up to keep him home this year.

The RTTY Journal CQ Magazine RTTY Contest received a lot of attention and the CQ booth was quickly cleaned out of log forms. If you need log forms send an SASE to either the RTTY Journal or CQ magazine. This Contest is really shaping up to be a great contest, I hope all of you get on the air and support it. It will be a chance for you to pick up many DX stations and don't forget, everyone who enters and turns their log in will receive a certificate.

DX NEWS

What with Dayton and a heavy work load at the office among other things, I have not been on the bands much myself as of late, and the mail bag is not all that heavy. But thanks to the TG9VT mailbox we do have some news to share with you.

Lebanon ... OD5NG continues to be active but I still have not seen a card from him and question whether any of us will, but it is always nice to know you worked Lebanon. Francis, OD5PL, a good QSLer and RTTY DX man has left Lebanon and is now in France.

Sudan ... ST2SA, Sid continues to be active and also operates an AMTOR Mailbox on 14.076.5 most days.

Botswana ... A22BW continues to be active on 15 meters his favorite band.

Christmas Island ... VK9XP, Peter has put to use the RTTY gear that Jim, VK9NS left him. he looks for the USA around 1300 UTC each day near 14.090. QSL via P.O. BOX 59, Christmas Island, Indian Ocean, Australia.

Crozet Island ... FT8WA has appeared around 1300 UTC on 14.081. QSL to F6FNU.

Senegal ... VE3JPC will operate as /6W from May 16 until June 6. He will use AMTOR, Baudot, and Packet. QSL to his home call address.

Nepal ... JA8RUZ will operate again from Nepal May 16 through 19, but will be on RTTY only, all day May 17. QSL via his home call.

San Andres Island ... HK0HEU has finally received the RTTY gear but is having some problems hooking it up. John, TG9VT will try to talk him thru it on SSB and if that fails, he will travel to the Island in July to get it going.

Macao ... XX9DX has been worked by W1DA, TG9VT and others. Usually around 1330 hours on 14.091. QSL to Captain Fernando Monteiro Alves, P.O. BOX 132, Macao, via Hong Kong.

Chatham Island ... Tony continues to be active, but will QRT for vacation from May 17 until June 20. When he returns he will be there until November.

Brunei ... V85BA, Hassan was worked on the East Coast by W1DA at 1100 UTC on 14.084. QSL to BOX 222, B.S.B. Brunei.

MAIL BAG

Dennis, VE6ZX writes that he stumbled into the BARTG Contest and had a ball, even worked UZ0FWI on Sakhalin Island. Hope to see you in the September contest Dennis.

Carl, K6WZ writes that he is somewhat settled in Herrington, KS. He plans to move to 535 South St., Herrington, KS 67449, sometime this month. He also adds that he has lots of room for antennas and will soon have some up. Carl also mentioned that he is in Dickinson County for those of you who might need this rare county. I think Joe, I0AOF needs it and I'm sure there are many others out there who will be looking for Carl.

(RTTY DX (cont. pg. 4)

(DX cont. from pg. 3)

Jules, W2JGR, writes in regard to my reference in last month's column about the lack of Dima's (UT5RP) presence on the bands. In a QSO with Jules in late January, Dima said that he would be QRT until about the first of August.

DXER OF THE MONTH

TED W2FG

I received a nice letter and some photos from Ted which I will share with you. It all started with Ted and I discussing the BARTG Contest and he followed with his letter. In essence he says he was confused about the rules but with good reason. He has not refigured his score but thinks that he might have won W2 because of lack of competition. Ted was gone on business during the month of September and had a chance to meet with Bahri, DJ0UJ in Munich, visit and operate from I5CYN in Florence and visit with Usha, VU2UGI and Gul, VU2GI in Bombay.

Ted was unable to make Dayton this year but mentioned that last year when he was there he picked up his first piece of RTTY gear. It was a CP-1 and that got him hooked on RTTY. His first QSO was with FM5BX on May 3, 1986 and has just received RTTY DXCC #139, dated Feb 10, 1987. Here is a brief profile of Ted. He is 43, first licensed in Brooklyn, NY as WA2FQG and later received the call W2FG. Ted is employed as an Engineering Manager. Ted is very active in ARRL work. He is a life member, Assistant Director in the Hudson Division, an original appointee on the ARRL DX Advisory Committee and was chairman in 1971/1972. Locally he is a member of the North Jersey DX association and past president, 1985. They serve as W2 QSL bureau and Ted is "Letter Manager". DX wise he needs only one more, Burma, XZ.

Ted's station equipment consists of a FT-901DM, a homebrew amplifier using a 8877, three element triband (Cubex) quad at 40 feet. RTTY TU is the CP-1 and home brew scope for tuning. He claims his best DX was working Wip when he was VP2EDX on 80 meters barefoot using an indoor "slinky antenna".

Ted has also been doing some "RTTY Missionary" work, having interested local DXers W2FCR and NB2P into getting computers and RTTY gear.

My thanks to Ted for sharing his background and recent trip with us here in this column.

Well that is it for this month, hope the weather

is nice where you are. Here in New England we are all working on ARKS, like in Noah's ARK, nothing but rain, rain, rain snow and then more rain. See you on the bands; send me a photo and tell your friends about the Journal. A tip of the DX Hat to, W1DA, TG9VT, W2JGR, K6WZ, VE6ZX, VE7VP, W0LHS, VK2AGE MAILBOX and VK2SG. de Roy, KT1N



Usha, VU2UGI - Ted, W2FG - Gul, VU2GI



Dale Sinner, W6IWO
9085 La Casita ave.
Fountain Valley, CA.
92708

HITS & MISSES

This issue of the Journal completes one year for me as your Publisher. It has been an exciting year, a learning experience, and lots of fun. Thanks to the regular Journal columnists my job has been easier than I thought it would be. So a very special thanks to Cole, Danny, Dick, and Roy for providing the up to date news and technical information Journal readers expect. Doing this throughout the year, plus keeping a job, and a family life means these great guys are going the extra mile for RTTY and the digital modes.

Again this year I have allotted a few pages to the Dayton Hamvention. This is the really the only time each year where the most RTTYers can be found in one place. Walking around the Hamvention floor and watching the action at the booths of those equipment manufacturers who make our digital gear is quite an experience. Let me tell you right now every single booth was packed each day of the event.

(HITS & MISSES cont. pg. 15)

I N T R O D U C I N G

KPC-4 DUAL PORT



KPC-4 Gives Simultaneous Connects, Digipeating, and Gateway On Two VHF Radio Ports

KPC-4™ is your GATEWAY into VHF Packet flexibility. KPC-4 features **two fully functional packet ports**, digipeating on each port, VHF gateway between ports, and an RS-232 computer port.

What's more — digipeating and gateway operations occur simultaneously while you're connected on one or both ports.

KPC-4's RS-232/TTL terminal interfacing provides universal compatibility to all computers, including Commodores and PC compatibles. Stream switching provides for access to both radio ports, each of which

supports the ARRL adopted AX.25 protocol.

KPC-4 also contains the popular Personal Packet Mailbox™ feature, (optional on all other Kantronics Packet Communicators). You or others can leave and retrieve messages from the Personal Packet Mailbox.

Only KPC-4 lets you bridge two frequencies on one band, and operate crossband. For more information about KPC-4 Dual Port Communicator, contact Kantronics or your Kantronics dealer.

Suggested Retail \$329.00.

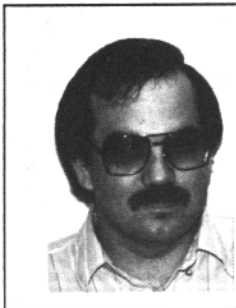
KPC-4 Dual Port Features

- Two simultaneous operable VHF radio ports, both ports operating at 1200 baud.
- Automatic gateway operation between ports.
- Command driven, like KPC-2 or KAM, with over 100 software commands.
- Kantronics Personal Packet Mailbox feature included.
- External modem connection point provided for future use.
- RS-232 or TTL level operation by jumper selection.
- 32K bytes RAM, 32K bytes EPROM, 512 bytes EEPROM, 63B03X processor.
- Kantronics' industry standard extruded aluminum case.
- ARRL adopted AX.25 protocol.
- FCC part 15 compliant.
- Each port includes watchdog timer.

Kantronics

RF Data Communications Specialists

1202 E. 23 Street Lawrence, Kansas 66046 (913) 842-7745



Danny Wilson, N6IHQ
4818 Pearce Ave.
Long Beach, CA. 90808

PACKET

Greetings from the West Coast! And I really mean that as I am composing this on one of those tiny lap top computers at an associates office that overlooks the Pacific Ocean. If you have never had the opportunity to use a battery operated computer with IBM compatibility, it is well worth the effort of trying to figure out how to open it up and turn it on! However, WordPerfect never looked so bland when it's on an LCD screen.

Well enough of my dissertation on portable computers and oceans and on with the Packet! I have had a few messages relayed from readers of the Journal over the Packet radio network lately. Thanks for your response and keep the correspondence coming! I would like to especially acknowledge Fred, K8VDU for the wonderful note forwarded to me. Also Ruth Ann, N6HIW, who has been really trying to catch me live at the computer instead of having to leave messages with the TNC. I could tell her to keep trying and hope that I'm here some time, but I am in the Packet radio program only very briefly each day. Also to Sid, W6FFW for the phone call and the nice chat about Packet.

Is there any news or items you would like covered in the Packet column here? I am getting response from the Beginner's column and would like to keep it going in the direction that it is headed. However, I do not get much response other than questions about how to get this TNC hooked to that computer etc. Of course this is far better than no response at all. I would like to cover the information that the readers of the Journal are most interested in. So if you have a suggestion, comment, complaint, or even an article to submit, let me know you are out there!

THE BEGINNERS COLUMN

Last month we discussed a little about the Packet mailbox systems and the network of PBBS' that are responsible for some very interesting and reliable forms of communications. This month I would like to discuss how to utilize some of the features of the systems and the network where they reside.

NO PLACE LIKE HOME

If you have a BBS within direct connect range of your QTH and comfortable with who runs it and how it is run, adopt it as your home BBS. Use this system as your gateway to the BBS network. There is no use in checking into more than one. They all carry just about the same files. I have never figured out why some Packet Ops check into every system they can, or worse, digipeat 4 or 5 hops to get to a system when there are plenty of usable BBS locations within easy reach. I do not like to be redundant in the fact that I have covered this topic several times in this column. Believe me, no Amateur organization offers an award for WABBS (You guessed to Bertha, Worked All Bulletin Board Systems), so stick with one and call it home.

EASY IS SPELLED PBBS

Lets get started and you will see just how easy this can really be. (Note: THE DESCRIPTIONS I WILL BE USING PERTAIN TO THE NEW MBL312 VERSION OF THE BBS SYSTEM. HOWEVER, IF THE SYSOP OF THE SYSTEM YOU ARE LOGGING ON WITH DOES NOT SUPPORT MBL312, THE COMMAND SUMMARY SHOULD BE AVAILABLE IN THE OPENING MENU.) Initiate the connect with the BBS and it will respond with an opening greeting followed by a request to enter your name. If you have not done this yet, type in N YOURNAME <return>. From now on whenever you log on to the system, the BBS will welcome you back to the system using your name.

The next line of text will look like this:
N6IHQ BBS (B,D,H,I,J,K,L,N,P,R,S,T,U,V,W,X,?)
>

Now I do not operate a PBBS from my QTH but used my call because I like the exposure. The BBS is divided up into two sections. The Mail Section and the File Section. The mail section is used to send, receive, delete and list any messages or bulletins sent through the BBS Network. The Files Section will be used to upload or download files of interest that will stay with the system. These types of files can be ARRL bulletins, DX reports, Public domain software documentation, Pictures, etc. Normally the files are originally sent via the Mail Section and then saved and put on the File Section directory. This month we will cover the Mail Section and explore the Files Section next month. So looking at the line of letters after N6IHQ BBS, we will be working with the letters L,S,R,K.

So, get the ball back to the BBS's court by typing in L<return>. What you have just asked for is the mail listings. (cont. pg. 7)

(PACKET cont. from pg. 6)

So lets look at one of the listings and I will describe how it works: (see 'screen sample' below)

In column 1 the MSG# is assigned by the BBS. if you forward the message thru the network, the message will be assigned a new number for each BBS it goes through. So a word of caution would be not to reference your messages by the number it is assigned by the system! The TS column has to do with the status of a message that is being put through the Mail Section. SIZE relates to how large the file is in bytes. TO is the message addressee. @BBS is what BBS the message originated from. FROM is the originating station. DATE is when the message was listed with the BBS you are logged into. And SUBJECT would be a brief title of the message entered by the originating station. I only typed in two entries for this example. however, the listings can be quite long. The BBS will only show you the new listings added since you last logged on. You can get the entire list by typing in L 0 <return>.

The S command is used to "S"end a message. To leave a message on the same BBS you would simply type S N6IHQ <return>. The BBS will respond with ENTER TITLE FOR MESSAGE. Then you could title your message GREAT PACKET ARTICLES! <return>. BBS response would be ENTER MESSAGE #1222 ^Z OR /EX TO END. At this point you could enter a complimentary letter to the Packet columnist of the RTTY JOURNAL and be assured of a speedy reply with a great big "thanks for reading it" included. But what if you are cross country from the location of the BBS the destination station will che k into? Type in SF N6IHQ @ NK6K-2. Your BBS will then utilize the network for delivery of the message to NK6K-2. There are several other features to the S command that will be covered in the summary of BBS operations. (Maybe next issue if Dale can give me lots of room)

R command is used to "R"ead a message that appears on the mail listing. Simply type in R 2307<return> and the BBS will relay the message to you with the heading information that involves the route the message took to get to your Home BBS. The last command I will cover is called the "K"ill command. This should only be used on messages that are addressed to you. After reading the message type in K and then the spacebar and then the number of your message to delete. The BBS response will be DONE.

To log 'off' the system simply press B for "B"ye. The system may come back with a brief message thanking you for the connection and then it will automatically disconnect from you.

That's about all the time I have and probably all the room Dale will have to get it squeezed into this issue. If you have questions I prefer them thru the PBBS network. If you have not been able to figure the BBS's out, write and I will help you. Thanks for your interest, see you next month. 73 de Danny, N6IHQ

(HITS & MISES cont. from pg. 4)

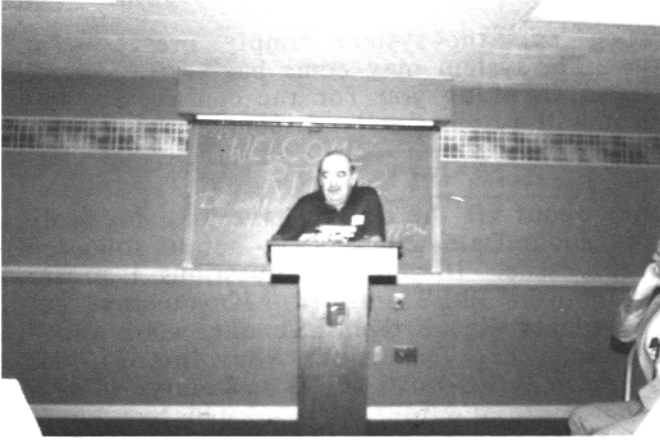
Dr. Alan Chandler, K6RFK of AEA lost his voice on the second day and was barely audible at the Forum. That will give you some idea of how busy these booths were each day. I'm sure equipment manufacturers sold many, many pieces of gear in those three days and the hams who made those purchases are going to be on the air any day now. I hope we all welcome them with open arms and help them to fit into the digital modes.

The mail at our office has been increasing I'm happy to say. But with the increase I find myself getting behind in answering, so I ask please be pateint, I'll get back to you as soon as time allows. Some of the mail I receive has been forwarded to one of the columnists for their use or for them to answer. In these cases you will receive an answer sooner and hopefully a solution to your problem. I am always looking for articles to publish, so again, my fellow hams if you have something to share with the readers of the RTTY Journal please feel free to submit it to me. It can be technical, such as a review, or something humorous about RTTY, whatever it may be, let me take a look at it. I have always tried to stay neutral in all matters regarding our articles so that at no time is the Journal unfair toward any of the manufacturers. That policy is very important to me and I hope it means the material you read here in the Journal will be unbiased. This statement may bring me some provacative mail but so be it. On the other hand I do welcome your comments about the Journal. I have an open mind and I want to know what you like or dislike about the Journal so that I can initiate improvements to make this newsletter number one on your reading list. Remember the Journal is your newsletter. More next month. de Dale, W6IWO

SCREEN SAMPLE

MSG#	BBS	SIZE	TO	@BBS	FROM	DATE	SUBJECT
2307	BN	741	OSCAR		KA6ERF	870422	OSCAR ORBITS
2299	BN	2426	KA6HJK	AJ6F-1	WA6SWT	870422	DON'T FORGET

RTTY DINNER DAYTON HAMVENTION 1987 RTTY DINNER



Pic #1

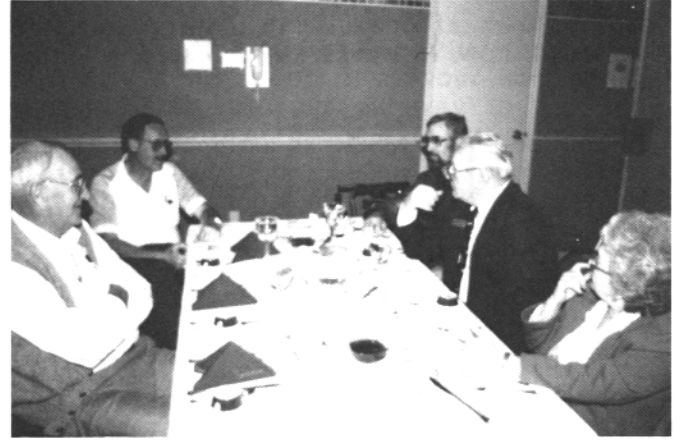


Table #3



Table #1



Table #4



Table #2



Pic #6

Pic#1 Dinner Host, Jerry -W11UF
Table #1 - L to R - Bob, W0HAH - Bill, W0LHS - Bob, WA9AKT - Jerry, WA11UF - Jim, KS0PT
Table #2 - L to R - Ed, N1CCO - Sy, N1CWX - Bob, WB7QWG - Drew, K9CW - Don, N9ALK
Table #3 - L to R - Cliff, NS5G - Dick, K0VKH - Rich, KC0KT - Don, K8WZX & XYL, RUTH
Table #4 - L to R - John, W3BE - Bill, K9GWT - Curt, W0SN - Ed, W9WKE - Arthur, XE11LL
Pic #6 The crowd at the Digital Digest Forum

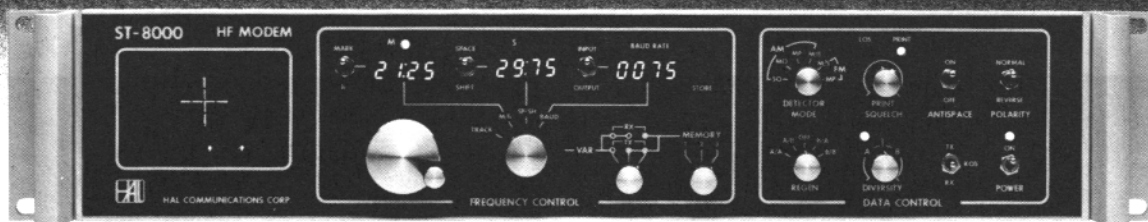
RTTY HOSPITALITY SUITE DAYTON HAMVENTION 1987



All of the pictures on this page were taken at the RTTY Hospitality Suite. I don't think I missed anyone except we all missed those of you who could not be with us this year. I wish I had names to go with all the faces but with meeting some of these fine RTTY people for the first time, I just was not able to remember them all. I have a different plan for next year that should correct this problem.

Wide Dynamic Range and Low Distortion – The Key to Superior HF Data Communications

- Dynamic Range > 75 dB
- 400 to 4000 Hz
- BW Matched to Baud Rate
- BER < 1×10^{-5} for S/N = 0 dB
- 10 to 1200 Baud
- Linear Phase Filters



ST-8000 HF Modem

Real HF radio teleprinter signals exhibit heavy fading and distortion, requirements that cannot be measured by standard constant amplitude BER and distortion test procedures. In designing the ST-8000, HAL has gone the extra step beyond traditional test and design. Our noise floor is at -65 dBm, not at -30 dBm as on other units, an extra 35 dB gain margin to handle fading. Filters in the ST-8000 are all of linear-phase design to give minimum pulse

distortion, not sharp-skirted filters with high phase distortion. All signal processing is done at the input tone frequency; heterodyning is NOT used. This avoids distortion due to frequency conversion or introduced by abnormally high or low filter Q's. Bandwidths of the input, Mark/Space channels, and post-detection filters are all computed and set for the baud rate you select, from 10 to 1200 baud. Other standard features of the ST-8000 include:

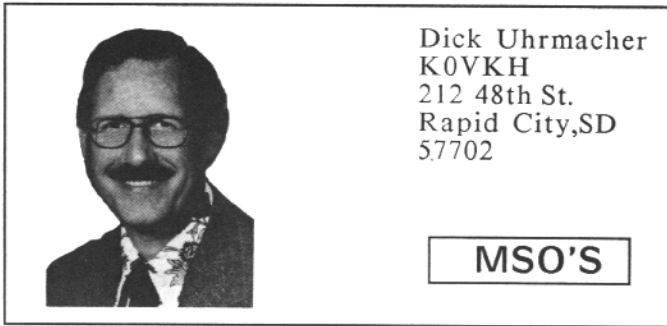
- 8 Programmable Memories
- Set frequencies in 1 Hz steps
- Adjustable Print Squelch
- Phase-continuous TX Tones
- Split or Transceive TX/RX
- CRT Tuning Indicator
- RS-232C, MIL-188C, or TTL Data
- 8, 600, or 10K Audio Input
- Signal Regeneration
- Variable Threshold Diversity
- RS-232 Remote Control I/O
- 100-130/200-250 VAC, 44-440 Hz
- AM or FM Signal Processing
- 32 steps of M/S filter BW
- Mark or Space-Only Detection
- Digital Multipath Correction
- FDX or HDX with Echo
- Spectra-Tune and X-Y Display
- Transmitter PTT Relay
- 8 or 600 Ohm Audio Output
- Code and Speed Conversion
- Signal Amplitude Squelch
- Receive Clock Recovery
- 3.5" High Rack Mounting

Write or call for complete ST-8000 specifications.



HAL Communications Corp.

Government Products Division
Post Office Box 365
Urbana, Illinois 61801
(217) 367-7373 TWX 910-245-0784



Dick Uhrmacher
K0VKH
212 48th St.
Rapid City, SD
57702

MSO'S

Hi Gang! Welcome to Spring, and Summer can't be far behind. The Dayton HAMVENTION is history for another year, and I hope to have some items in next months column from the world's largest gathering of Hams. MSO activity on HF seems to be picking up quite dramatically, probably due to the multi-mode packet controllers sparking interest in the RTTY mode. One and all are most certainly welcome on the established MSO frequencies and systems, and from my experience, you'll find some of the most helpful and friendly guys and gals around there!

MSO HINTS

Most of the MSO's have a "Directory Scan" feature, that not only saves the remote user time in locating a specific file, but also greatly shortens the time the MSO occupies a given frequency. For example, the TG9VT MSO (GUATMAIL) currently contains a total of 56 files. Twenty-one of these are related to "DX" activities. If the remote user is only interested in "DX" subjects, and commands the MSO to scan the Directory for only DX items, (.SDIR DX), then only those files will be listed in the MSO response. This procedure is the same for any letter sequence contained in the Directory command, (i.e., if your call sign is W9XYZ, and you command the MSO with .SDIR XYZ, then only files with that exact letter sequence in the "filename" will be listed). Try it, you'll not only like it, but it will conserve on-the-air time.

MORE AMTOR MSO INFO

Angelo, W5KSI, reports that Dave, ZL2AMD, is now experimenting with an AMTOR MSO on 14072.3 Khz. His access code is ZAMD. Thanks Angelo! And, in the way of complaints, an avid AMTOR operator recently told me that it's very frustrating if AMTOR operators do not give their callsigns routinely during a QSO. If it's only given at the very first of the QSO, then he's "not in synch", and misses it; and, unless stations give callsigns frequently during a QSO, a lot of time is spent monitoring, that could be more profitably spent in searching

for DX stations. I received a very nice letter from Craig, WD8DRZ/6, from Redwood City, California, outlining his popular AMTOR MSO. Craig's system is the HAL MPT3100, DSK-3100, ARQ-1000, RMX-3100, coupled to a Drake TR-7A, R-7A, with receivers and demodulators set up for dual-diversity receiving. And, his system is designed to scan 14.072.5, 14.073.5, 14.074.5 and 14.075.6 Khz. his MSO access code is WDRZZW, and AMTOR SELCAL code is WDRZ. Give Craig's system a shot! Russ, K1DOW/4, reports that Henry, K4CZ, is finding increasing AMTOR activity on 30 meters, on or about 10.145 Mhz., and he's meeting some very interesting people there. Henry is thinking of moving his AMTOR MSO up to 30 meters, as soon as the Summer "thunderstorm season" begins to effect his current 160 Meter operations. Thanks for your input Russ, and good luck to Henry!

NATIONAL AUTOSTART FREQUENCY PARTICIPANTS

I have been informed that I was negligent when I last listed those stations with MSO's on the National Autostart Frequency, by not including their entire callsign. And, at this juncture, I'd like to rectify that omission.

At the end of this column you will find the most current listing of MSO users on 14.087.750.

NEW "HAL" RTTY SYSTEM MAKES DEBUT

The new HAL Communications Corporation DS-3200, "Radio Data Communications Terminal", is now in the hands of many users, and it's a superbly engineered and constructed system. Specifically designed, and FCC "type accepted", for use in a radio system, this totally new RTTY, CW and ASCII system not only contains all the features that HAL has made famous over the years, but also has the computing power of an IBM "XT" computer! Two basic models are available, one with two floppy disk drives, and another with one floppy and a 20 megabyte hard disk. Several different board options are available, including a user option to include the HAL PCI-2000 RTTY PC Interface, or a customer supplied external demodulator, (i.e., ST-6000, ST-8000, or other compatible unit). MS-DOS and GWBASIC, and the always excellently written HAL Operator's Manuals are standard fare, and the RTTY operating system is patterned after the very popular and sophisticated Message Processor Terminal system of the MPT-3100. As has been reported earlier in this column, the W9CD MSO program, (either the PCI-2000 version, or the external demodulator version), will provide "mailbox"

MSO's cont. pg. 12

PACKETEERS BEWARE!

Although this column is normally written for RTTY enthusiasts, some of you may be delving into the Packet Mode, and I have a word of caution for you. I've recently been made aware from several sources, that the FCC has been issuing citations to Packet stations operating below 50 Mhz, for digipeating "third party traffic". The current rule is that "unattended" (or automatic operation if you prefer), is not allowed below 50 Mhz. In one case, a South American station, digipeated through a Alabama packet station on 40 meters, to a European station, and passed third party traffic, thus causing the issuance of a citation. The ARRL, in support of the packet "Gateway" concept, is currently attempting to convince the FCC that these automatic operations, (where a Control Operator does not have to intercept and approve of third party transactions), should be allowed, as it is above 50 Mhz. However, at this date, (mid-March 1987), it is not within the FCC rules, and this type of activity on HF is not allowed.

MSO RAMBLINGS

Is Louise, WB8JIB, the first YL MSO SYSOP? As far as this author knows, she is the first to actively sponsor a MSO, and most certainly so on the National Autostart Frequency. She and her OM Gaylord, (WB8ICL), are long-time RTTY enthusiasts, and Gaylord was one of the original MSO operators back in 1978. Congratulations Louise, and good luck with the system! --- And speaking of Yellow Springs, OH, Gaylord is now the proud owner of an IBM PC clone, and has retired his ever faithful RS Model Four to other duties. In fact, his flexibility is such now that he runs two programs at once, Clark's (W9CD) MSO program on HF, and a Packet system on VHF! Now.... if he can just work SSTV in there some place!!

John, TG9VT, is the proud owner of a new HAL ST-8000 demodulator, and says that those rare DX stations don't stand a chance now!

Ernie, W6ZRR, is the proud owner of a new HAL DS-3200 system, to which he will tie his ST-8000. Now that combination should really be hard to beat. Ernie plans to retire his ever-faithful HAL MPT 3100 to duties on VHF in the San Luis Obispo area.

A frequent visitor to the National Autostart Frequency, Pat Bell, WB7RYO, has fallen on some hard times. His home in Gillette, Wyoming, (along with about two dozen others), is located over some ancient coal seams. And, some very toxic fumes from these underground deposits has forced him and his family to seek refuge outside his home. We sincerely hope

that a solution to that problem is forthcoming soon, so that Pat and his family can move back in and resume their family life! Good luck Pat!

I can hear the lawnmower calling! That's it for this month Gang, and I hope that you all have a very nice Spring season, and that Summer vacation is just around the corner for all! Best
73
de: Dick, K0VKH

NATIONAL AUTOSTART LISTING

MSO'S ON 14.087.750 HZ (CAR. FREQ)

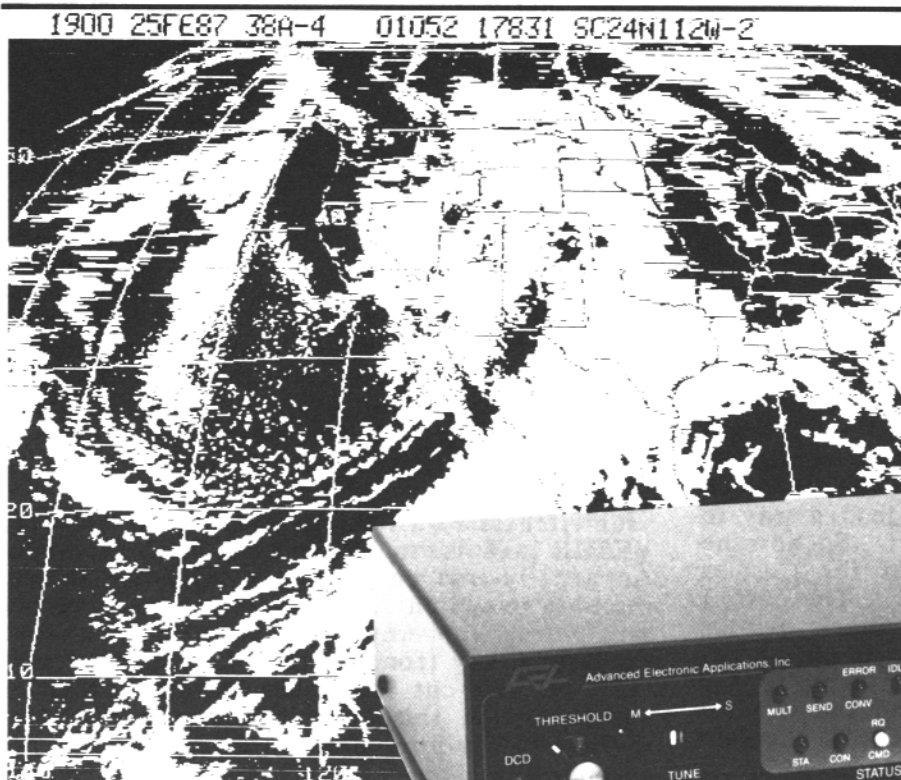
-
- MSOICL ----- GAYLORD ----- WB8ICL
Yellow Springs, OH.
 - MSOJIB ----- LOUISE ----- WB8JIB
Yellow Springs, OH.
 - MSOVKH ----- DICK ----- K0VKH
Rapid City, SD.
 - MSOKOZ ----- FRANK ----- K4KOZ
Boca Raton, FL.
 - MSOCD ----- CLARK ----- W9CD
Urbana, IL.
 - MSOAPI ----- AL ----- N1API
Meridan, CT.
 - MSOZRR ----- ERNIE ----- W6ZRR
San Luis Obispo, CA.
 - MSO5FL ----- BROWNIE ----- K5FL
Denton, TX.
 - GUATMAIL ----- JOHN ----- TG9VT
Gutemala City, Guat.
 - MSOIQO ----- BOB ----- W7IQO
Scottsdale, AZ.
 - MSOJRW ----- LARRY ----- KA0JRW
Glenwood, IA.
 - MSOZTV ----- DON ----- WB8ZTV
Moundsville, WV.
 - MSOKFX ----- HARRY ----- W6KFX
Hollister, CA.
 - MSOQXK ----- DON ----- W5QXK
Kaufman, TX.

ARRIVED TO LATE TO FIT THIS ISSUE

Australian National Amateur Radio Teleprinter Society announces their WORLD WIDE RTTY Contest for 1987. Saturday 06 June, 0000 UTC to Monday 08 June, 0000 UTC. Not more than 30 hours for single ops. Message to consist of: RST, TIME (UTC), ZONE. Use CARTG Zone Chart for scoring. For more info, send a SASE to RTTY Journal (address, inside front cover).

New PK-232 Breakthrough

Six Digital Modes - Including Weather FAX



A new software enhancement makes the AEA PK-232 the only amateur data controller to offer six transmit/receive modes in a single unit.

- * Morse Code
- * Baudot (RTTY)
- * ASCII
- * AMTOR
- * Packet
- * Weather FAX

\$ 319⁹⁵
AMATEUR NET
\$379.95 AEA RETAIL

Your home computer (or even a simple terminal) can be used for radio data communication in six different modes. Any RS-232 compatible computer or terminal can be connected directly to the PK-232, which interfaces with your transceiver. The only program needed is a simple terminal program, like those used with telephone modems, allowing the computer to be used as a data terminal. All signal processing, protocol, and decoding software is in ROM in the PK-232.

The PK-232 also includes a no compromise VHF/HF/CW modem with an eight pole bandpass filter, four pole discriminator, and 5 pole post detection low pass filter. Experienced HF Packeteers are reporting the PK-232 to have the best Packet modem available.

Operation of the PK-232 is a breeze, with twenty-one front panel indicators for constant

status and mode indication. The 240 page manual includes a "quick start" section for easy connection and complete documentation including schematics. Two identical back panel radio ports mean either your VHF or HF radio can be selected with a front panel switch. Other back panel connections include external modem disconnect, FSK and Scope Outputs, CW keying jacks, and RS-232 terminal interface.

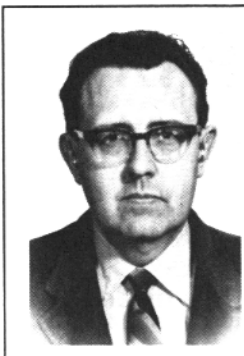
The RS-232 connector is also used for attaching any Epson graphics compatible parallel printer for printing Weather Fax. Weather maps and satellite photos, like the one in this ad, can be printed in your shack.

Contact your local AEA dealer today for more information about the one unit that gives you six modes for one low price, the PK-232.



Brings you the Breakthrough

2006-196th St. SW
Lynnwood, WA 98036
(206) 775-7373



Cole Ellsworth, W6OXP
10461 Dewey Dr.
Garden Grove, CA. 92640

CONNECTIONS

No sooner do I start complaining about lack of mail, when it starts to flow! Perhaps I should complain every month.

First letter is from John, K4VDM and the continuing saga of the Cosmos connection. John says that after one of our latest discussions, he rechecked the somewhat confusing operators manual for the Infotech 200F and noted that there was indeed a way to get it configured for 7 bit ASCII. So now he has the 200F driving the input of the Cosmos serial to parallel converter/buffer. The output of the Cosmos drives the Radio Shack printer and all is working beautifully. The buffer in the Cosmos eliminated the need for handshaking between the 200F and the Cosmos (be careful here, as if the input data is too fast and lot of it, even a buffer will fill up). So everything has turned up roses for John. His next project is connecting his COCO to a PK232. Now if we can get him to share his final hookup, I am certain there must be a few of you COCO owners out there that would be interested. John also enclosed some photos of his very nice shack.

The following letters were passed on to me by Dale, for comment and response as required.

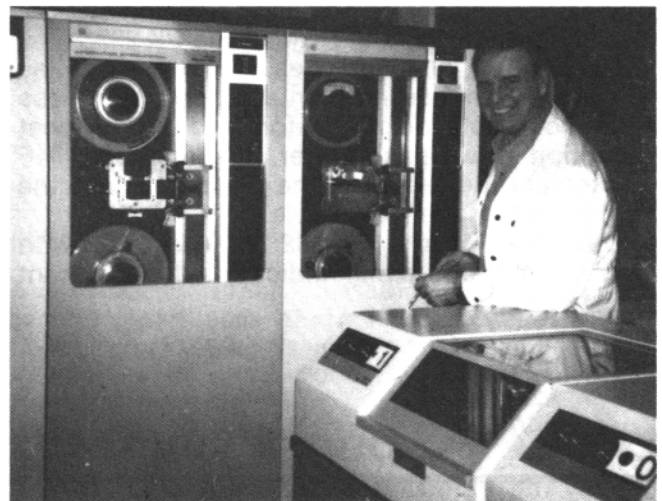
This first letter is from Amrum, KB9DD in La Jolla, California. He is looking for information on getting his MacIntoch computer on RTTY and CW. I venture to say the easy way is to get one of these multimode units like the AEA PK232 or the Kantronics KAM. Both of these will operate CW, RTTY, AMTOR, ASCII, and Packet. you will need MAC compatible terminal communications software with a serial port to drive the unit. The software can be a MODEM communications package. Of course if you are a good MAC programmer, it is possible to write a program to receive and transmit both CW and RTTY by software alone, at least to the point of keying an audio oscillator. Other methods of getting info on the MAC on the air is by checking in with local radio clubs, or joining Compuserve and the HAM Forum special interest group. So does anyone out there with a MAC use it on RTTY and CW?

Letter number three comes from Jack in Orland Park, Illinois (I could not find a call sign) who has a C64 with disk drive and a STAR SG10 printer with "The Interface" by Kantronics and an AIR DISK. he could not get the AIR DISK to work with the printer. He wonders if any of our readers have had the same problem. He presently uses Hamtext and that works ok.

Our fourth letter is from Michael, K4LDL in Florida. He needs help in putting a Radio Shack Model 1000 (I think that is what the letter said) on both Packet and HF. There should be something on that in 80 Micro magazine back issues or possibly in the ham magazines or computer journals. Anyone have any reference to point out to Michael? Or has anyone already put this Radio Shack unit on the air?

Our fifth and last letter is from "Uncle Ray" VE3UR in Toronto. He has a TONO EXL-5000. Apparently one must use the shift key to send the code to switch from transmit to receive and vice versa. Immediately below the shift key is the KANA key (for Japanese CW) which gets in the way. He cut the traces at the KANA key and paralleled this key with the shift key. Now if his left pinky does stray a bit, it still accomplishes the task of switching between transmit and receive. Thanks for the tip, Ray! The mail also brought an announcement from Kantronics who have a new terminal program "Kanterm" for the Commodore C64 and C128 computers. It can be used with most all Kantronics modems. It does all kinds of good things like split screen and also 80 columns on the C128. This might help solve the connection problem for Commodore owners.

That does it for this month, and we really do enjoy getting your letters. Very 73.
de Cole, W6OXP



John, K4VDM

CLASSIFIED ADS

30 words \$3.00, additional words 5 cents each. Cash with copy.

Deadline for copy is 1st of month for following month

FOR SALE: EXL 500 E Tono, hardly used, excellent condition, CW, RTTY and AMTOR. See Ham Radio, April 1987, page 104. \$500.00 Cable for printer \$25.00. MicroLog, AIR-1 for Vic20 or C64. Cost \$149.00, will sell for \$140.00. J. Sannazzari, W6CWR, 3466 Redondo Rd., Rio Colorado Estate, Yuma, AZ. 85365-8184. Phone: (602) 344 2233

NEWS - NEWS - NEWS - amateur Radio's Newspaper "WORLD RADIO". One year subscription is \$11.00. Contact: WORLD RADIO P. O. BOX 271309, Escondido, CA. 92027-0770

FOR SALE: Polybaud; New English/Russian Baudot RTTY receiving program for the Commodore 64. Receives all standard speeds 50-132 wpm, toggles between English/Cyrillic alphabets while receiving, has 20K-plus character buffer and prints in either alphabet to Gemini SG-10 w/Cardco interface. Handy on-screen tuning and received byte displays. Compatible with MFJ-1225 or similiar demodulator connected via RS-232 port. Disk and instructions \$39.95. Steven D. Jones, 112 South Plain, Ithaca, NY. 14850

RTTY FREQUENCY LISTS AND BOOKS: We have a complete selection of worldwide RTTY frequency books and lists. press, weather, government, clandestine etc. Write for free catalog. Universal Electronics, Inc. 4555 Groves Road, suite 13 - Columbus, OH. 43232 (614) 866-4605

HAM RADIO magazine - The no nonsense "state of the art" technical magazine. Subscribe now and see for yourself. One year \$22.95 USA, \$31.00 Canada and Foreign surface. \$37.00 AIR to Europe, Africa, Japan areas. Contact: HAM Publishing Group, Greenville, NH. 03048

HENRY RADIO, RTTY Headquarters for all your needs in the world of digital communications, is overstocked with used equipment. We have HAL 3100's, MPT/MSO's, Demodulators, and the latest new pieces in stock. ST-8000, DS-3200 computers, multiplexers, etc. We also have some used Robot RTTY and Slow Scan TV units. Complete line of Advances Electronic Applications (AEA), used CP-1, PK-64, and the newest PK-232 all band, all mode, all computer system. Also UDC-232 (use your own demodulator or TU). Call HENRY RADIO at (213) 820-1234 in Los Angeles, or 1-800 - 421-6631 outside California. Ask for George, AB6A

SUPERFAST MORSE CODE SUPEREASY: Subliminal cassette, \$10.00. Amazing mnemonics: Learn Morse Code in 1 hour; Q Signals Supereasy; Novice Written Exam Supereasy, \$5.00 each. Higher - level Supereasy exams \$10.00 each. Moneyback guarantee. Free catalog: SASE. Bahr, 2549-RT1, Temple, Palmbay, FL. 32905

(CARTG cont from pg 2)

CHECK LOG - SP2UUU

* denotes W.A.C.

AWARDS LIST

Top ten scores- receive engraved plaques. SINGLE OPERATOR
I2OLW - IK5CKL - VK5RY - SM5FUG -
WB5HBR - W3KV - VK2SG - VE2JR -
W6JOX

MULTI-OPERATOR, Top Score:
LZ2KIM - Engraved Plaque -4,235,060

SWL, Top Score:
ONL383 - Engraved Plaque - 982,730

CANADIAN, Top Score:
VE2JR - 460,200

Contacted most Canadian Stations:
VE7FYM - 42 Stations

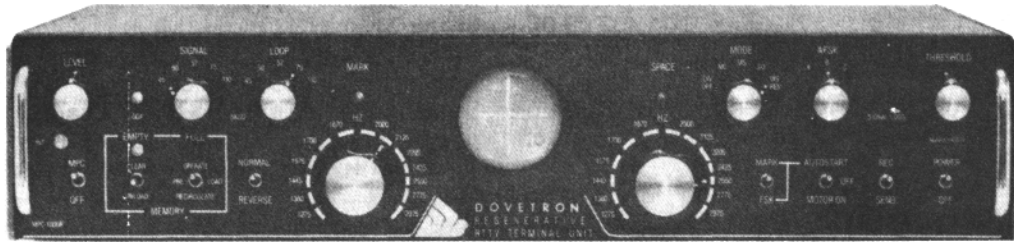
GREEN RTTYer: WF5E - 235,552

The Canadian Amateur Radio Teletype Group (CARTG) extends thanks to all participants in the annual World-Wide RTTY Contests over the years. We are pleased that we could bring some pleasure to RTTYers in so many countries. We submit the final statistics for the 1986, 26th Annual CARTG Sweepstakes and there are no plans at present to sponsor a RTTY Contest in 1987.

Our best wishes to friends and RTTYers world-wide and many thanks to all who have supported the CARTG.

MPC-1000R BY DOVETRON

MULTIPATH CORRECTION, IN-BAND DIVERSITY, SIGNAL REGENERATION,
UP-DOWN SPEED CONVERSION, 200 CHARACTER FIFO MEMORY,
KEYBOARD-CONTROLLED WORD CORRECTION & DIGITAL AUTOSTART



THE MPC-1000R REGENERATIVE RTTY TERMINAL UNIT

The DOVETRON MPC-1000R is a complete Transmit-Receive modem designed for optimum radio teleprinter communications on land, sea and in the air.

Standard features include a high level loop supply and keyer (neutral or polar), EIA and MIL FSK outputs, a phase-continuous AFSK Tone Keyer with three selectable Mark - Space - Shift tone pairs, Mark, FSK & Digital Autostart, Automatic Markhold, an internal RY Generator for terminal unit Self-Test and circuit adjustment, and a Signal Loss Alarm circuit.

The MPC Series is available in six different models to meet your exact requirements.

Complete specifications are
available on your request,
or call 602-281-1681



3034 Tucson-Nogales Hwy.
Nogales, AZ. 85628-6160

RTTY JOURNAL
9085 LA CASITA AVE
FOUNTAIN VALLEY, CA
92708

SECOND CLASS
POSTAGE PAID
SANTA ANA, CA
92799-9998