

INSTRUCTIONS FOR INSTALLING THE 164024, 173400** OR 178897**
MODIFICATION KIT TO PROVIDE AN OFFSET COPYHOLDER ON THE
TELETYPE MODEL 28 APPARATUS CABINET (LAC, LAAC)**

The following chart pertains to Bell System only.

Teletype Part No.		Bell System Code
New	Old	
164024**	152901**	28A Copyholder
173400**	153900**	28B Copyholder
*178897**		28C Copyholder

1. GENERAL

a. The 164024** or 178897** (for console cabinets) or 173400** (for table model) Modification Kit provides facilities for holding copy during message transmission. For the 178897** Modification Kit, the copy plate is located above and to the right of center of the dome, and a pivot is provided to permit access within the dome. The copy is held against a flat plate by an adjustable line-guide assembly. The line-guide assembly in turn is mounted on a pivot arm which may be rotated so as to keep the line-guide flat against varying amounts of copy. The 164024** or 173400** Modification Kit mounts to the right side of the cabinet. Some cabinets are factory equipped with the copyholder (not installed).

b. The double asterisk (**) designates a two letter suffix which indicates the paint finish.

c. The 164024** Modification Kit consists of:

3	2449	Washer, Lock	3	112626	Nut
3	2846	Washer, Flat	3	152848	Screw
3	45815	Washer, Lock	1	164025**	Bracket, Copyholder
3	108355	Nut	1	164026**	Copyholder Assembly

d. The 173400** Modification Kit consists of:

2	3438	Washer, Flat	1	155085**	Bracket with Nut (Upper)
3	3639	Washer, Lock	1	155086	Pad, Rubber
3	93108	Washer, Lock	3	155087	Screw
2	98642	Washer, Lock	1	164025**	Copyholder Bracket
3	125231	Nut	1	164026**	Copyholder Assembly
1	154869**	Bracket with Nut (Lower)			

e. The 178897** Modification Kit consists of:

2	2191	Washer, Lock	3	108355	Nut
3	2449	Washer, Lock	2	151657	Screw
3	2846	Washer, Flat	3	152848	Screw

*Indicates Change

Printed in U.S.A.

- *1 178893** Plate, Clamp
- 1 178894 Bracket, Copyholder
- 1 178896** Copyholder

f. For part numbers referred to, for paint finishes available, and for parts ordering information, see Teletype Model 28 Printer Parts Bulletin 1149B or 1169B.

2. INSTALLATION

- *a. 164024 (Figure 1) or 178897** Modification Kit: (Figure 4)

NOTE

When using the 178897** Modification Kit, the cabinet must have three .312" diameter holes as shown in Figure 3.

* (1) Remove the three 119641 Plug Buttons, if present, from the holes in the upper rear corner of the right side panel, and attach the 164025** or 178894** Copyholder Bracket to the right side of cabinet using the three 152848 Screws, 2449 Lock Washers, 2846 Washers, and 108355 Nuts contained in a cloth bag attached to the copyholder arm.

* (2) For the 178897** Modification Kit, assemble the 178896** Copyholder Assembly to the 178894** Bracket using two 2191 Lock Washers, 151657 Screws and 178893 Clamp Plate. Position the clamp plate on the front face of the bracket with the formed edge to the right, as viewed from the front of the cabinet.

(3) Assemble the 164026** Copyholder Assembly to the 164025** Copyholder Bracket using the three 45815 Lock Washers and 112626 Nuts.

(4) Make the adjustments listed in paragraph 3.

b. 173400** Modification Kit

(1) Invert the cabinet so that bottom faces the front; then open dome.

(2) Follow procedure in paragraph 2.a. (2).

(3) Remove the two 112626 Nuts and 45815 Lock Washers from the outer edge of the right inner section of the cabinet bottom (these parts mount the shock mounts in the cabinet). Retain the two 112626 Nuts but discard the two 45815 Lock Washers.

(4) Mount the 154869 Lower Bracket to the cabinet bottom using the two 112626 Nuts retained in paragraph 2.b. (3) and two 98642 Lock Washers and 3438 Flat Washers. The nuts should be loosely held so that it may be moved on its elongated holes for adjustment later. The bracket should be in the forward position.

(5) Mount the assembly (parts assembled in paragraph 2.b. (2) to the 154869 Lower Bracket using two 155087 Screws and 93108 Lock Washers.

(6) Place the 155086 Rubber Pad on the nut of the 155085** Upper Bracket.

(7) Place the 155085** Upper Bracket (with nut) on the front right top portion of the cabinet, near the dome catch bracket. Use the remaining 155087 Screw to secure the 164025** Copyholder Bracket to the 155085** Upper Bracket. Align the whole assembly so that the upper bracket hole aligns with the 164025** Copyholder Bracket Top Hole. Tighten the screw against the 155086 Rubber Spacer so that the 164025** Bracket fits tightly.

(8) Tighten all screws and nuts.

(9) Return the cabinet to its normally upright position.

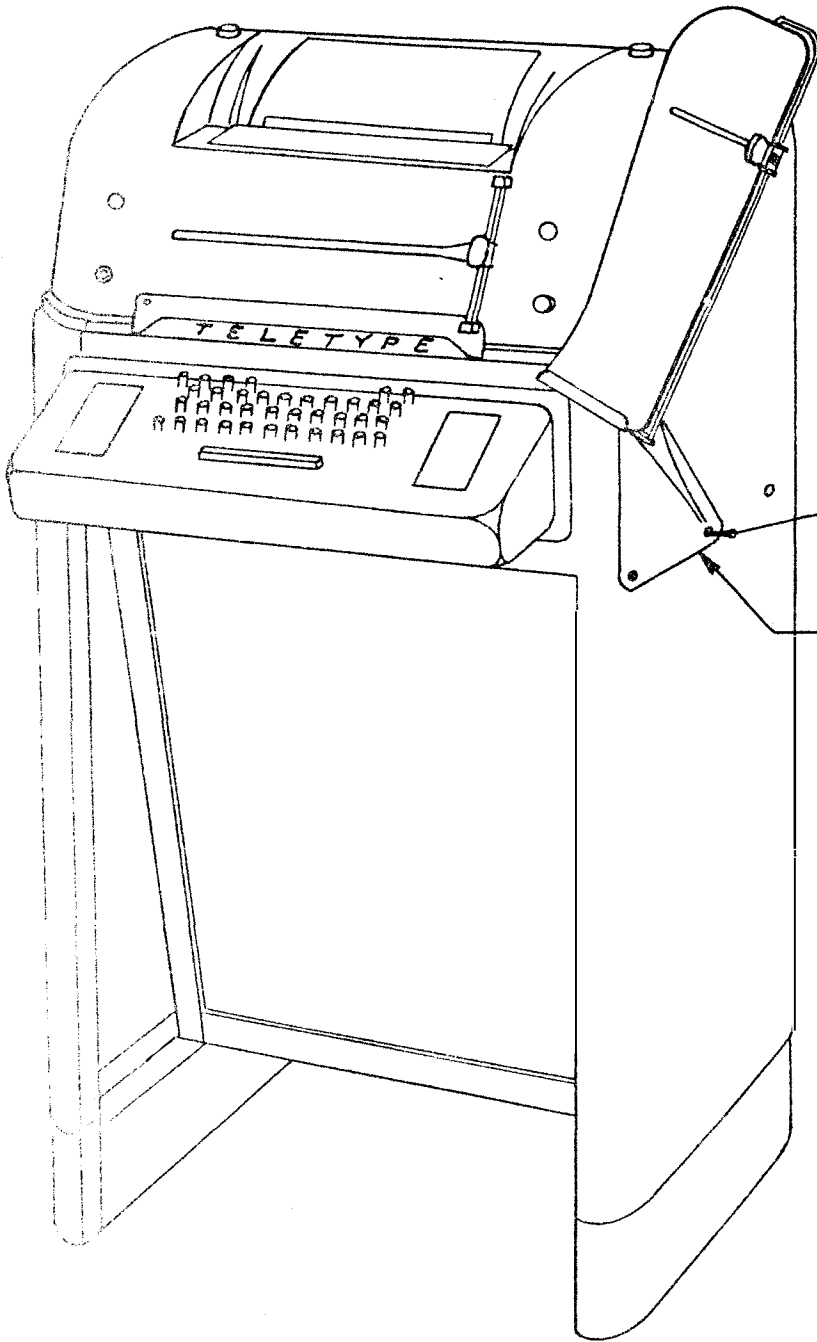
(10) Follow procedure in paragraph 2.a.(3).

3. ADJUSTMENTS. - For adjustment procedure refer to standardized information, for other than Bell System see Teletype Bulletin 217B or 250B and Figure 2.

*

*

*

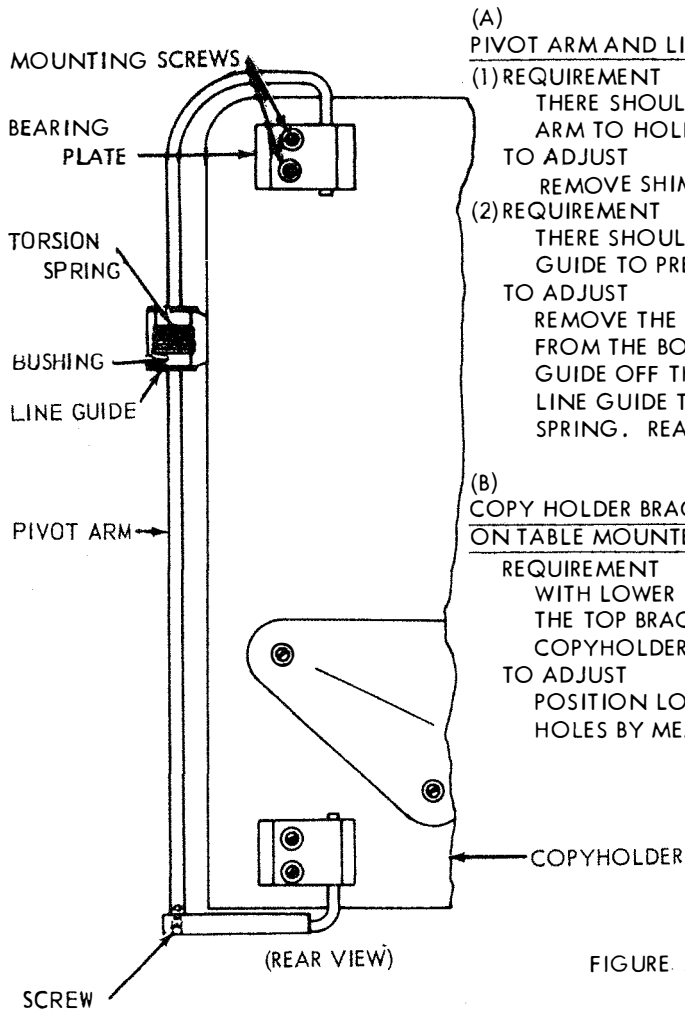


- 152848 SCREW
- 2449 LOCK WASHER
- 2846 WASHER
- 108355 NUT
- (3 PLACES)

COPYHOLDER
BRACKET

FIGURE 1

OFF-SET COPYHOLDER



(A)
PIVOT ARM AND LINE GUIDE

(1) REQUIREMENT

THERE SHOULD BE SUFFICIENT TENSION ON THE PIVOT ARM TO HOLD IT IN THE DESIRED POSITION.
TO ADJUST

REMOVE SHIMS FROM BEARING PLATE, TIGHTEN SCREWS.

(2) REQUIREMENT

THERE SHOULD BE SUFFICIENT TENSION ON THE LINE GUIDE TO PREVENT IT FROM SLIPPING DOWN ITS PIVOT ARM.
TO ADJUST

REMOVE THE LOWER BEARING PLATE. REMOVE THE SCREW FROM THE BOTTOM OF THE PIVOT ARM. SLIP THE LINE GUIDE OFF THE PIVOT ARM. ROTATE THE BUSHING IN THE LINE GUIDE TO INCREASE THE TENSION OF THE TORSION SPRING. REASSEMBLE.

(B)
COPY HOLDER BRACKET AND TOP BRACKET ALIGNMENT ON TABLE MOUNTED CABINET (NOT ILLUSTRATED)

REQUIREMENT

WITH LOWER BRACKET IN FORWARD POSITION, THE HOLE IN THE TOP BRACKET SHOULD ALIGN WITH THE TOP HOLE IN COPYHOLDER BRACKET.

TO ADJUST

POSITION LOWER BRACKET ALONG ITS ELONGATED MOUNTING HOLES BY MEANS OF ITS TWO NUTS.

FIGURE 2 CABINET, COPYHOLDER

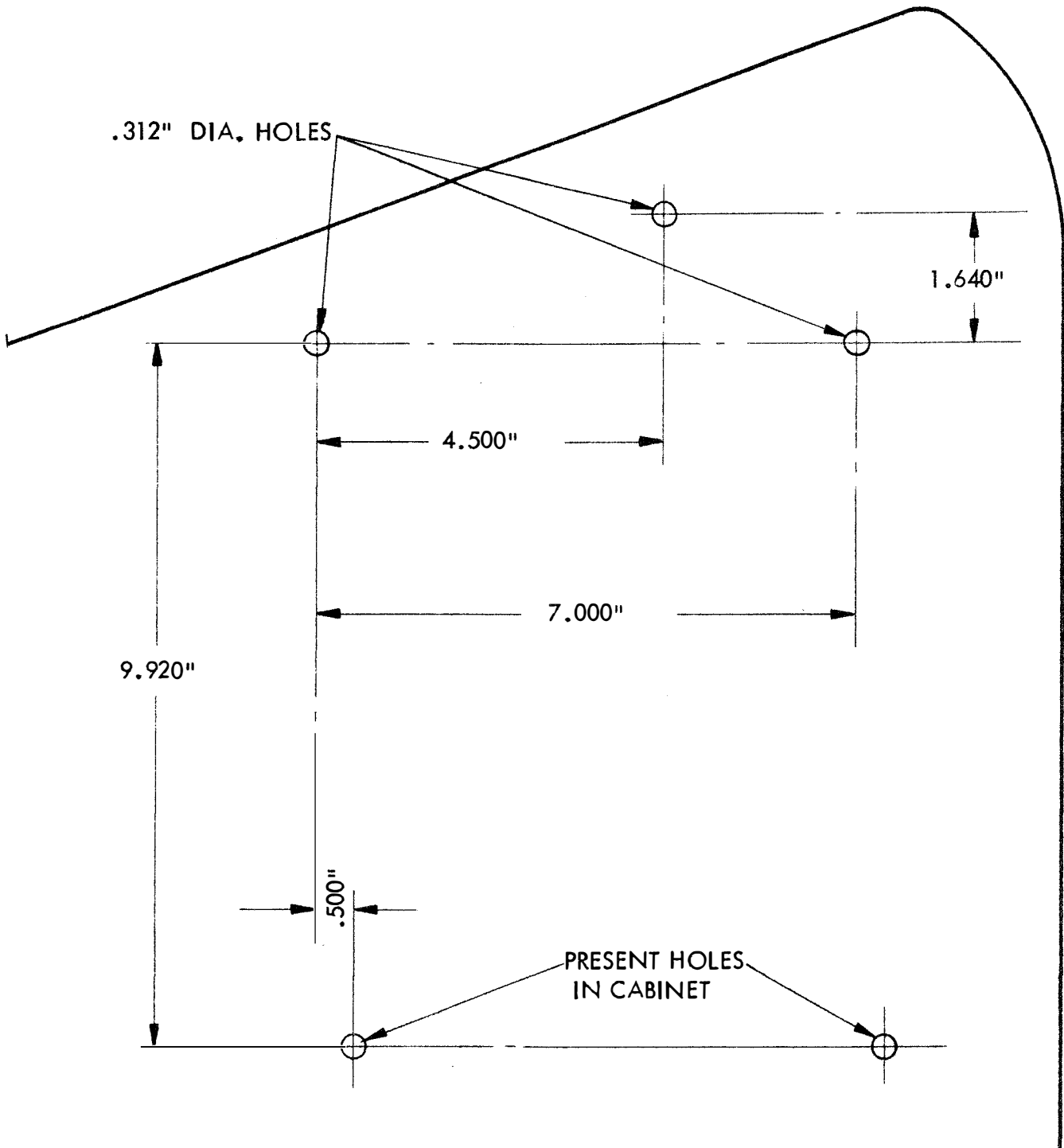


FIGURE 3.

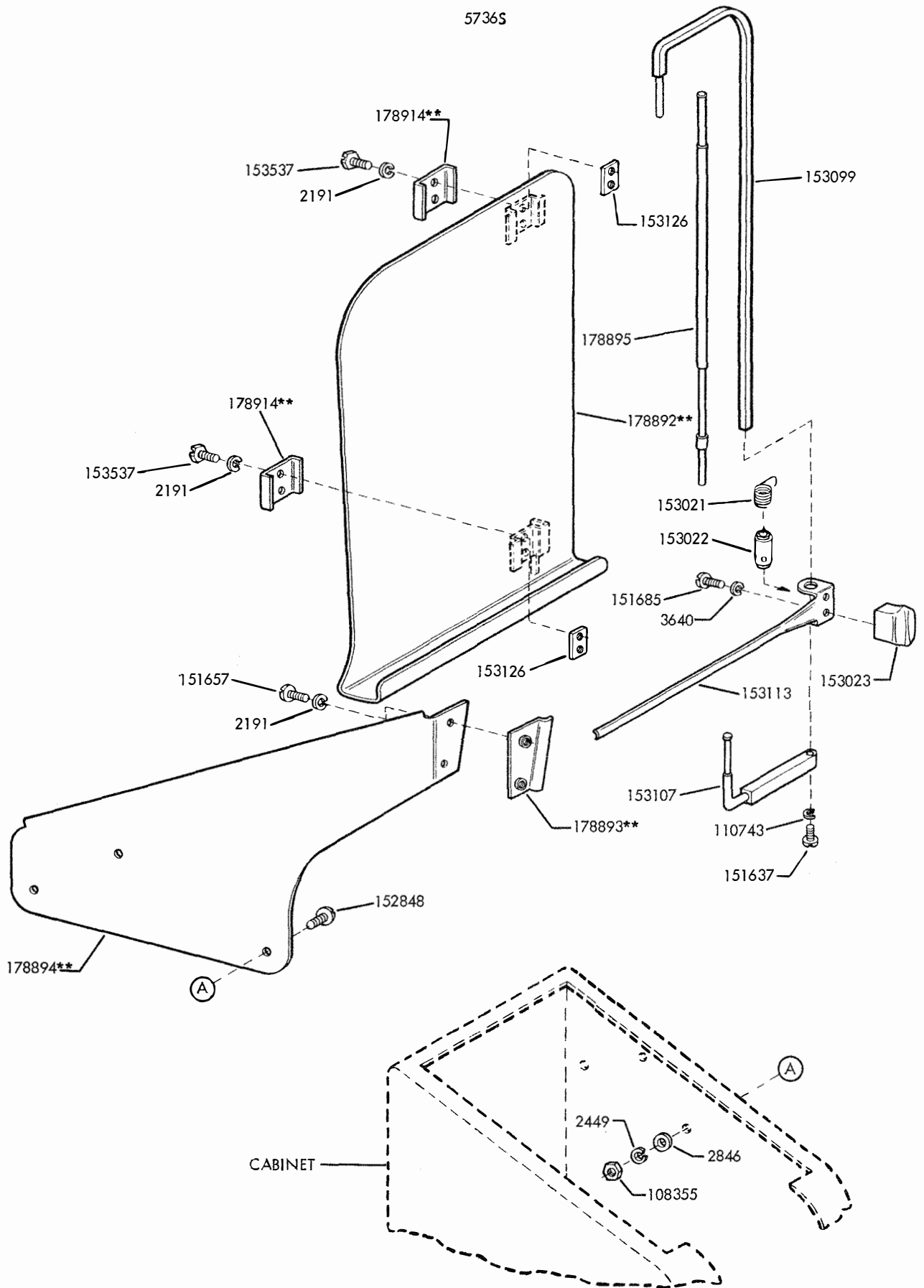


FIGURE 4.